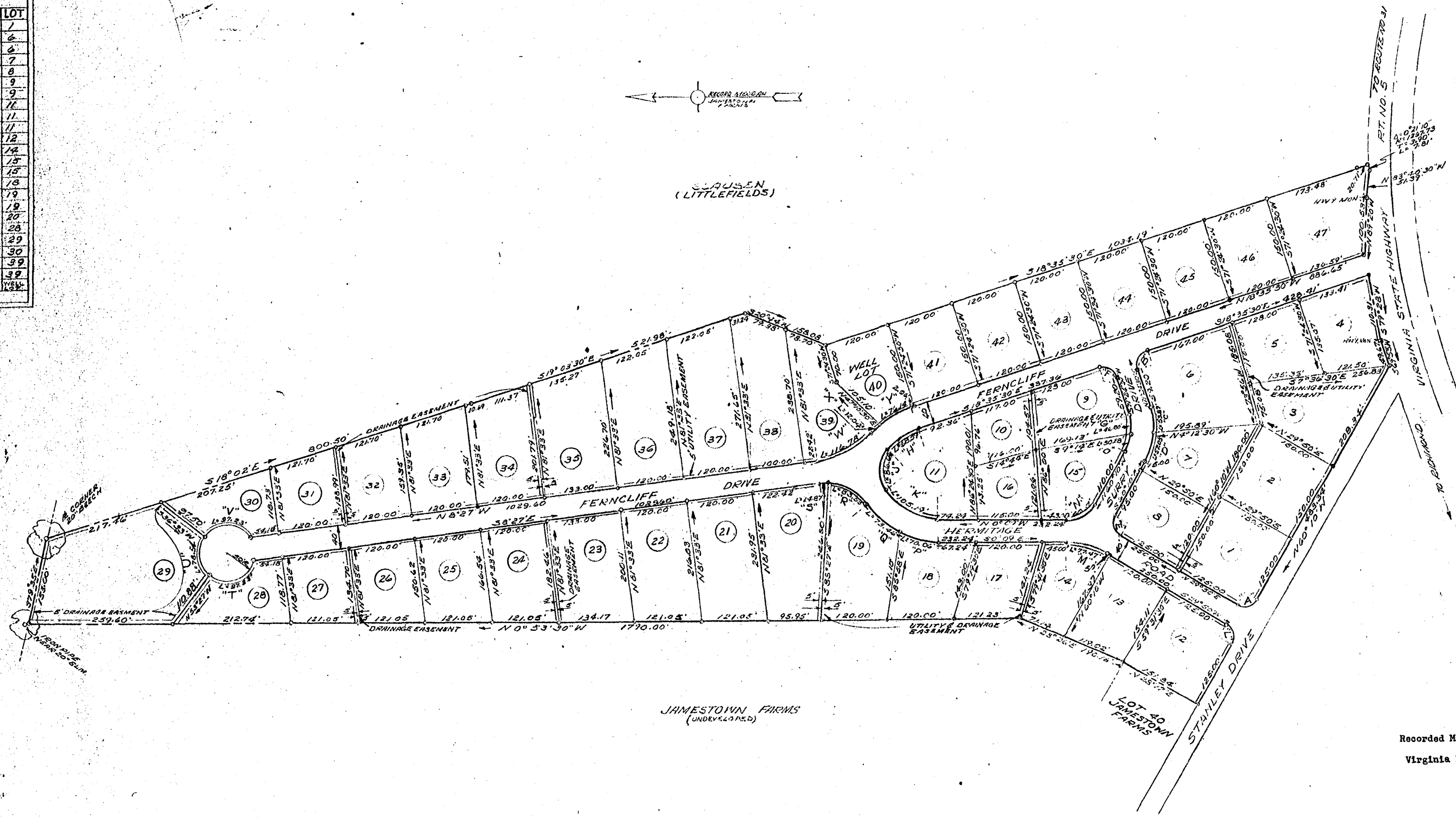


NO.	DELTA	RADIUS	TANG.	LENGTH	LOT
A	90°00'	26.00'	25.00'	39.27'	1
B	90°00'	25.00'	25.00'	39.27'	6
C	29°13'	131.20'	27.32'	63.87'	2
D	24°54'	151.20'	28.97'	57.05'	7
E	90°00'	25.00'	25.00'	39.27'	8
F	90°00'	25.00'	25.00'	39.27'	9
G	29°24'	91.20'	23.93'	46.80'	9
H	28°04'	140.03'	33.00'	68.59'	11
J	77°43'	63.87'	31.47'	86.64'	11
K	52°44'	108.07'	57.18'	105.09'	11
L	90°00'	25.00'	25.00'	39.27'	12
M	29°59'	148.04'	39.44'	77.47'	14
N	60°01'	57.92'	33.43'	60.47'	15
O	19°30'	91.20'	15.28'	30.28'	15
P	27°20'	148.07'	34.01'	70.00'	18
Q	28°25'	143.07'	37.50'	73.44'	19
R	34°23'	88.01'	45.47'	85.53'	19
S	3°47'	88.01'	7.28'	12.84'	20
T	111°25'	50.00'	73.52'	97.23'	28
U	90°00'	50.00'	50.00'	70.54'	29
V	111°25'	50.00'	73.32'	97.23'	30
W	38°23'	175.12'	60.63'	116.78'	39
X	3°50'	180.03'	6.03'	12.04'	39
Y	84°14'	180.03'	13.28'	76.14'	39



Recorded March 7, 1960
Virginia Blanchard, Clerk

CANTERBURY HILLS
SUBDIVISION
JOSEPH S. TERRELL, OWNER
JAMESTOWN DISTRICT
JAMES CITY COUNTY
VIRGINIA
SCALE: 1"=100' NOVEMBER 1, 1959

McMANUS, BROOK & McMANUS
CIVIL ENGINEERS & LAND SURVEYORS
WILLIAMSBURG, VIRGINIA

NOTE:
IRON PIPE MARKERS SHOWN THIS - 3"
5" UTILITY EASEMENT ALONG FERNCLIFF DRIVE 2015.