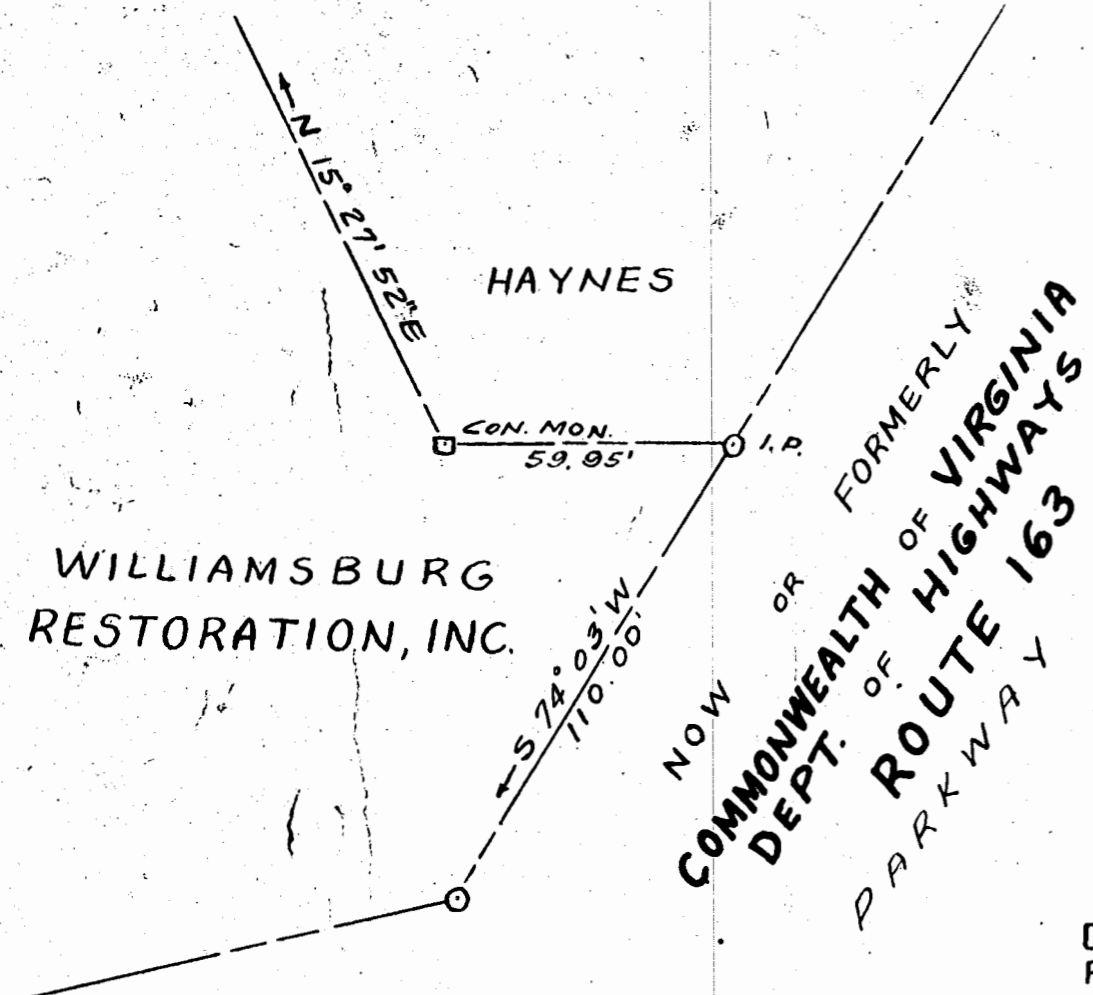


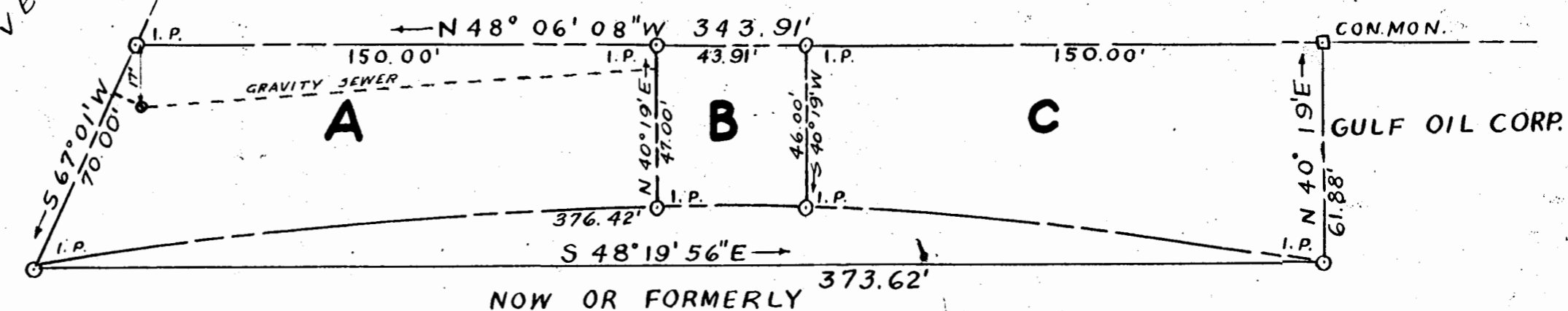
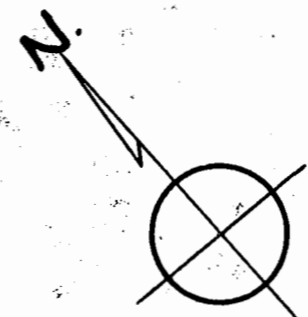
HAYNES



WILLIAMSBURG RESTORATION, INC.

NOW OR FORMERLY
 COMMONWEALTH OF VIRGINIA
 DEPT. OF HIGHWAYS
 ROUTE 163
 PARKWAY DRIVE

DRIVE



GULF OIL CORP.

NOW OR FORMERLY
 COMMONWEALTH OF VIRGINIA DEPT. OF HIGHWAYS
 ROUTE 60

CURVE DATA
 D = 4° 49' 40"
 R = 1186.00'
 L = 376.42'

- AREA A FOR UNDERGROUND SEWER EASEMENT TO CITY OF WILLIAMSBURG
- AREA B FOR SEWER PUMPING STATION TO CITY OF WILLIAMSBURG
- AREA C FOR REMAINING LANDS OF WILLIAMSBURG RESTORATION, INC.

PLAT OF PROPERTY
 EASEMENT GRANTS TO
THE CITY OF WILLIAMSBURG, VA.
 BY
WILLIAMSBURG RESTORATION INC.

DRAWN BY FCA	SCALE 0 40 80	DATE 25 JUNE '57
-----------------	------------------	---------------------