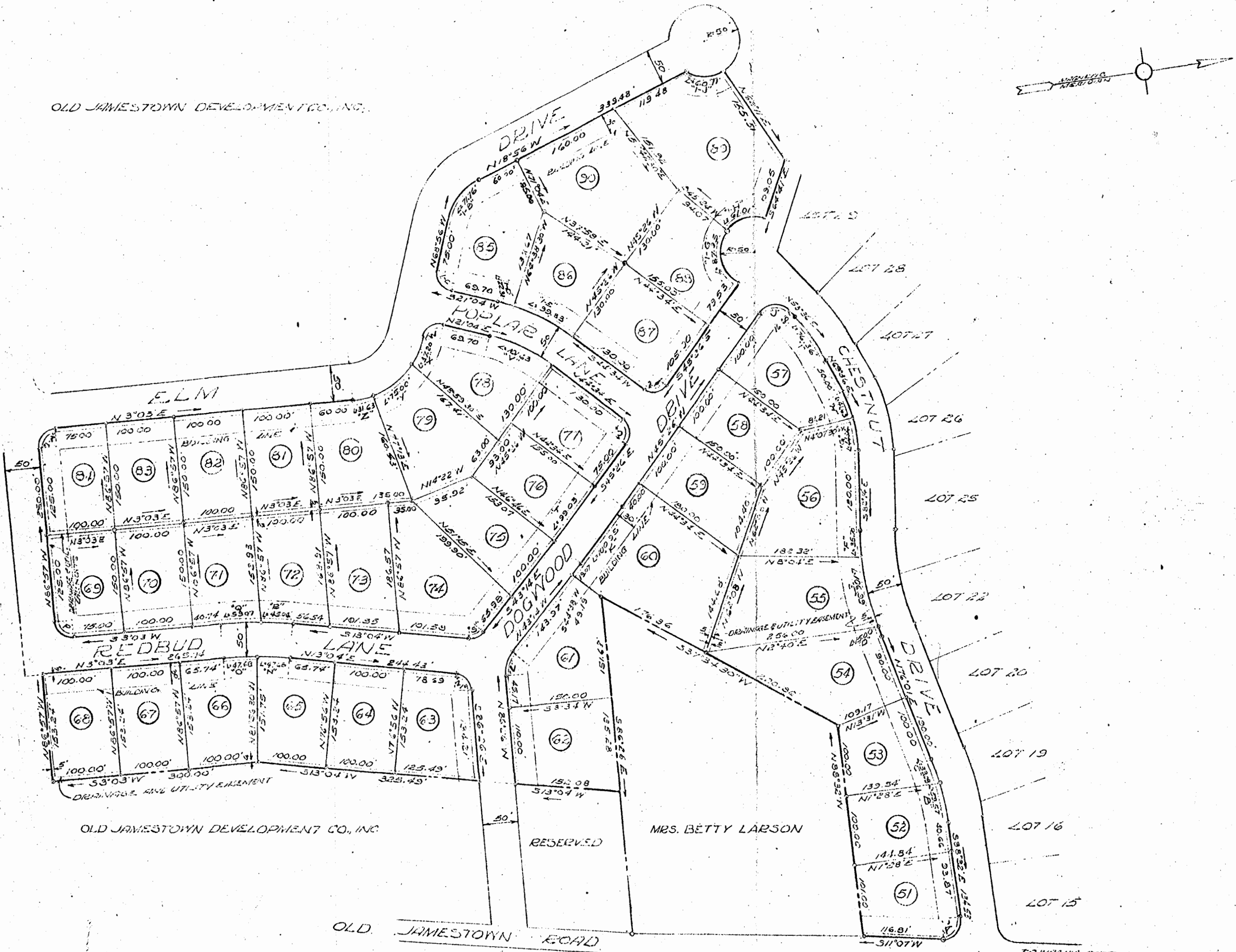


OLD JAMESTOWN DEVELOPMENT CO., INC.



CURVE TABLE					
NO	DELTA	RADIUS	TANG.	LENGTH	LOT
A	99°39'	25.00'	29.61	43.48	51
B	9°56'	343.60	29.86	59.57	52
C	5°31'	343.60	16.55	33.08	53
D	2°04'	415.38	7.49	15.00	54
E	14°45'30"	415.38	53.80	106.99	55
F	4°55'30"	415.38	17.86	35.70	56
G	14°28'30"	174.31	22.31	44.04	56
H	13°41'30"	174.31	20.93	41.63	57
I	16°00'	273.45	38.43	76.36	57
J	99°02'	29.15	34.15	50.37	57
K	2°12'	2,629.17	50.48	100.95	60
L	43°12'	50.00	19.80	37.70	61
M	30°30'	25.00	21.16	35.12	63
N	5°00'30"	545.52	23.85	47.48	65
O	5°00'30"	545.52	23.85	47.48	66
P	30°00'	25.00	25.00	39.27	69
Q	5°41'	595.52	29.56	59.07	71
R	4°20'	595.52	22.53	45.04	72
S	56°18'	25.00	13.38	24.57	74
T	2°12'	2,579.17	49.52	99.03	76
U	90°00'	25.00	25.00	39.27	77
V	23°30'	247.79	51.54	101.63	78
W	90°00'	25.00	25.00	39.27	78
X	183°37'30"	114.46	18.77	37.20	78
Y	373°2'30"	114.46	38.90	75.00	79
Z	15°50'	114.46	15.92	31.63	80
I.A	90°00'	25.00	25.00	39.27	84
I.B	50°00'	82.23	38.34	71.76	85
I.C	90°00'	25.00	25.00	39.27	85
I.D	41°17'30"	297.79	11.16	22.31	85
I.E	15°12'30"	297.79	50.39	99.83	86
I.F	90°00'	25.00	25.00	39.27	87
I.G	100°47'	50.00	60.42	87.95	88
I.H	69°55'	50.00	34.96	61.01	89
I.I	68°53'	50.00	34.29	60.11	89

OLD JAMESTOWN DEVELOPMENT CO., INC.

OLD JAMESTOWN ROAD

MRS. BETTY LARSON

RESERVED

Recorded Aug. 31, 1959
see
D. B. 71, page 40

BIRCHWOOD PARK
SECTION "B"
PART "B"
OLD JAMESTOWN DEVELOPMENT CO., INC.
JAMESTOWN DISTRICT
JAMES CITY COUNTY
VIRGINIA
SCALE 1"=100' AUGUST 1, 1959

M. MANUS, MROCK & M. MANUS
CIVIL ENGINEERS - LAND SURVEYORS
WILLIAMSBURG, VIRGINIA
BY *Edward J. Brock*

NOTE:
IRON PIPE MARKERS SHOWN THUS - 0