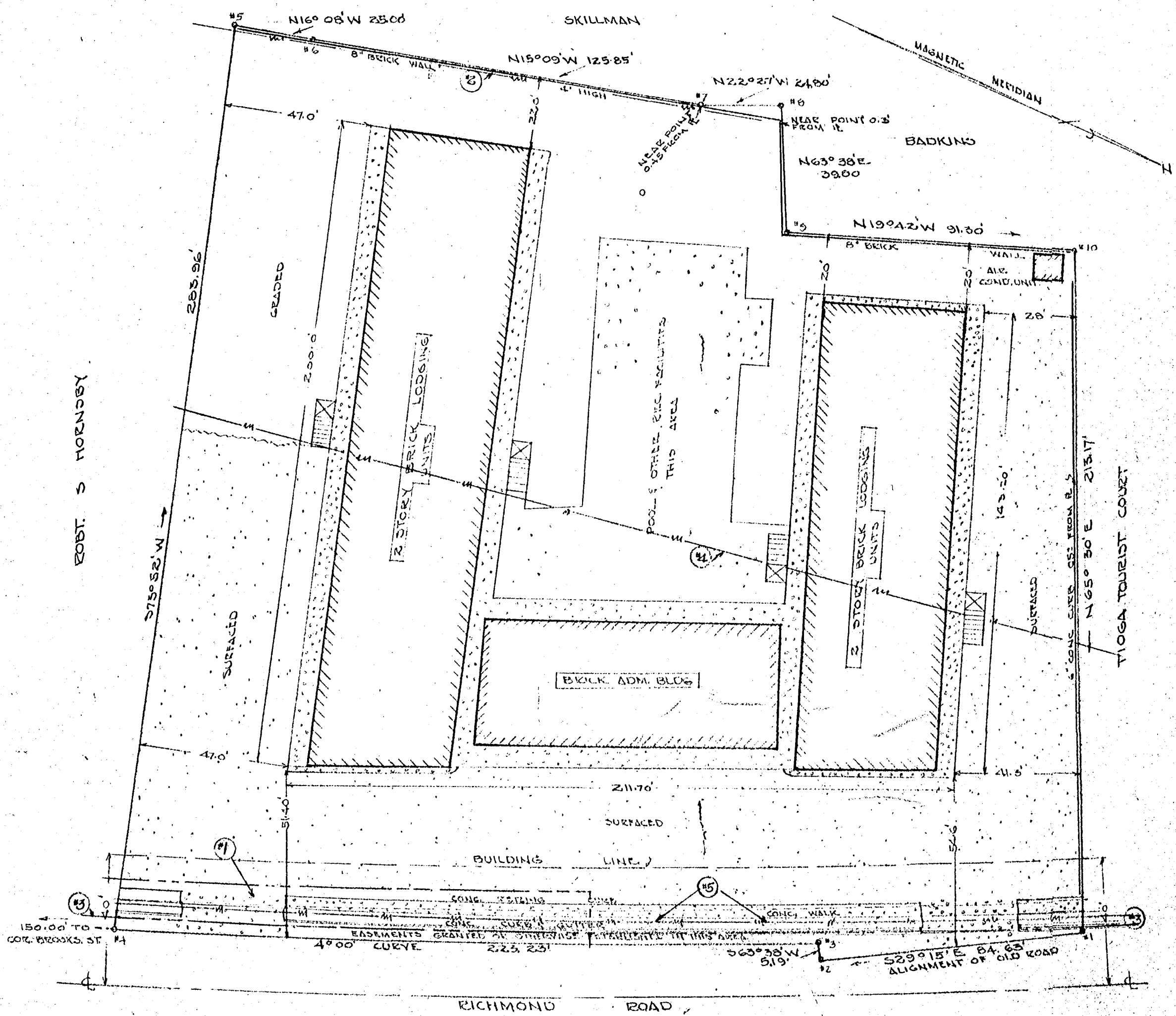


"HOLIDAY INN"



EASEMENTS

#1. RIGHT OF WAY, WREEMUTH TO CITY OF WILLIAMSBURG
NOV. 13 1946. REF. D.B. 20 P 352

#2. POWER LINE, GODWIN TO V.E. & P. CO., REF. D. B. 30 P 151, 1958

#3. WATER LINE, OPHEIM, TUTTLE & OTHERS TO CITY OF WILLIAMSBURG.
KEY REF. D. B. 24 P 331, 1926

#4. POWER LINE, TUTTLE, JONES, & OTHERS TO V. E. & P. CO.,
KEY REF. D. B. 31 P 272, 1939, (ABANDONED BUT NOT QUIT CLAIMED)

#5. POWER LINE OPHEIM & OTHERS TO V. E. & P. CO., JULY 30, 1926
(NOTE OBLIGATION OF COMPANY TO MOVE POLES)

ABOVE EASEMENTS ARE VERY GENERAL, LOCATIONS SHOWN ARE
MY INTERPRETATION. N.O.M.C.A.

Recorded Dec. 19, 1958
see
D. B. 30, page 422
Virginia Blauhaas Clerk
POINTS #1 TO #4, 2 1/2" SPIKES IN PAVEMENT, PAINTED
POINTS #5 TO #10, IRON PIPES.
Survey D. B. Williams, REF. VA NO. 131

HOLIDAY INN
PLAT SHOWING BOUNDARY SURVEY AND
RELATIVE LOCATION OF IMPROVEMENTS
PROPERTY STANDING IN THE NAME OF INEZ
CUSHARD, E.W. BELL, NATHAN LUBAR,
BERNARD PASKIN & NATHAN WESCHLER,
SITUATED IN THE CITY OF WILLIAMSBURG VA
NOVEMBER 17 1958 SCALE 1" = 30'
REVISED TO SHOW EASEMENTS, DEC 15, 1958