

— SUBDIVISION PLAT —
CYPRESS POINT

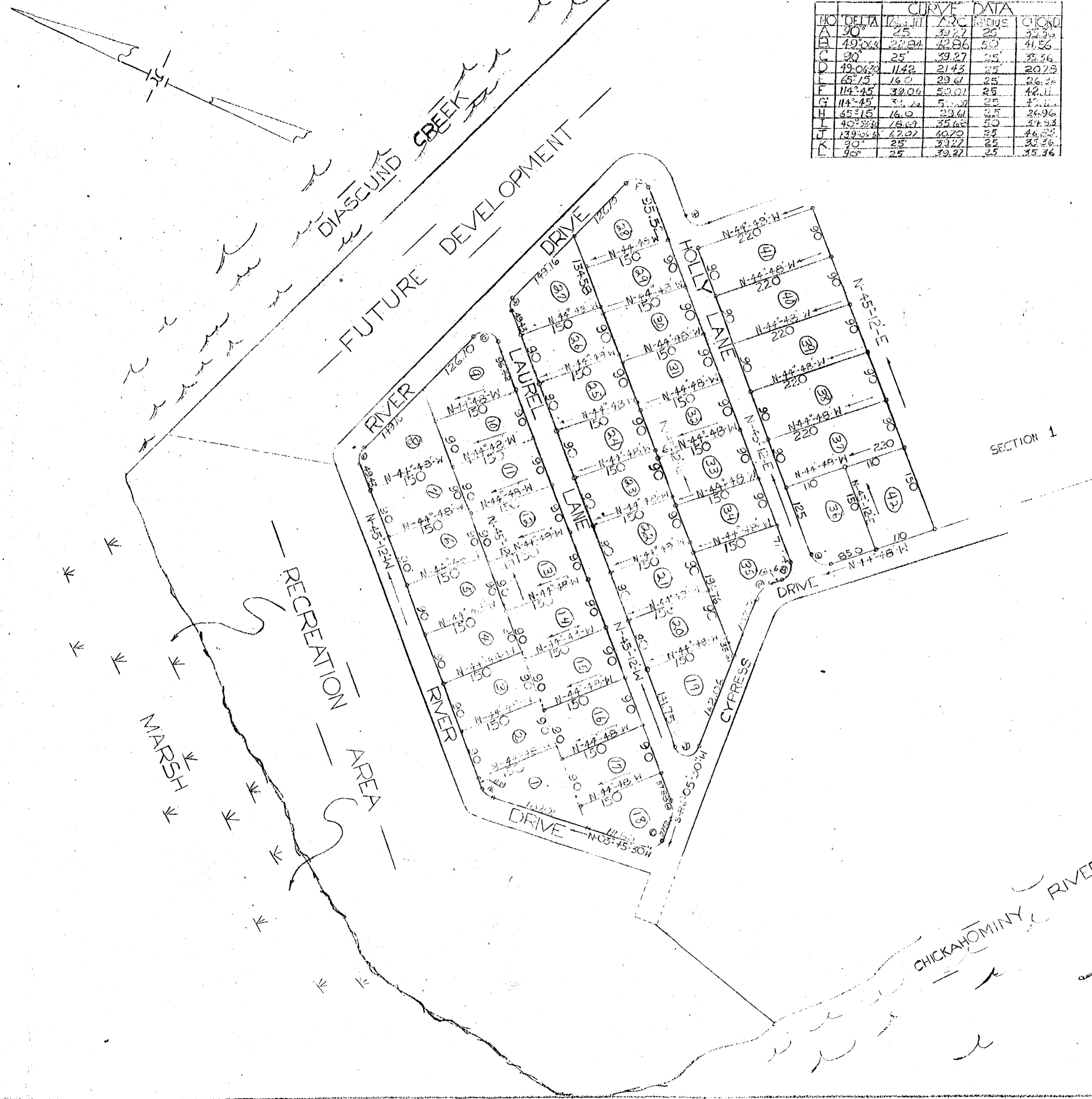
— SECTION NO 2 —

JAMES CITY COUNTY VIRGINIA
 SCALE 1" = 100' JULY 24, 1958

PROPERTY OF
 JAMES D. DIEBICH & J.L. HYATT

SURVEY BY
 WETHERILL D. THOMAS

NO	DELTA	CHORD	RADIUS	CHORD
A	90°	25	39.27	25
B	49°06'	22.94	42.86	50
C	90°	25	39.27	25
D	49°06'	11.42	21.43	25
E	65°15'	16.0	29.61	25
F	114°45'	39.06	53.02	25
G	45°45'	33.24	51.07	25
H	45°15'	16.0	29.61	25
I	40°33'	18.69	35.65	50
J	139°06'	47.07	60.70	25
K	90°	25	39.27	25
L	90°	25	39.27	25



INDICATES POINTS OF CURVE
 10' EASEMENTS DEDICATED FOR PUBLIC
 AND/OR PRIVATE UTILITIES AND DRAINAGE

IRON PIPES HAVE OR WILL BE SET AT
 ALL LOT CORNERS.

SECTION 1

THIS SHEET NO 2 OF CYPRESS POINT
 IS WITH THE FREE AND IN ACCORDANCE
 WITH THE DESIRES AND WISHES OF THE
 UNDERSIGNED

DATE: *July 24, 1958*

TESTE: *James D. Diebich & J.L. Hyatt*
 DATE: *July 24, 1958* NOTARY PUBLIC

Recorded August 4, 1958

Partly vacated May 29, 1959, new plat in Book 17 page 29 & Deed recorded in DB 69 p 361 - Va. Bluefield, Clerk