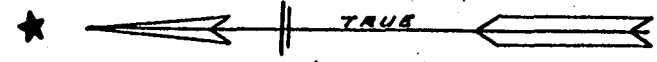


YORK COUNTY

CITY OF WILLIAMSBURG

Center of Stream is Corporate Line

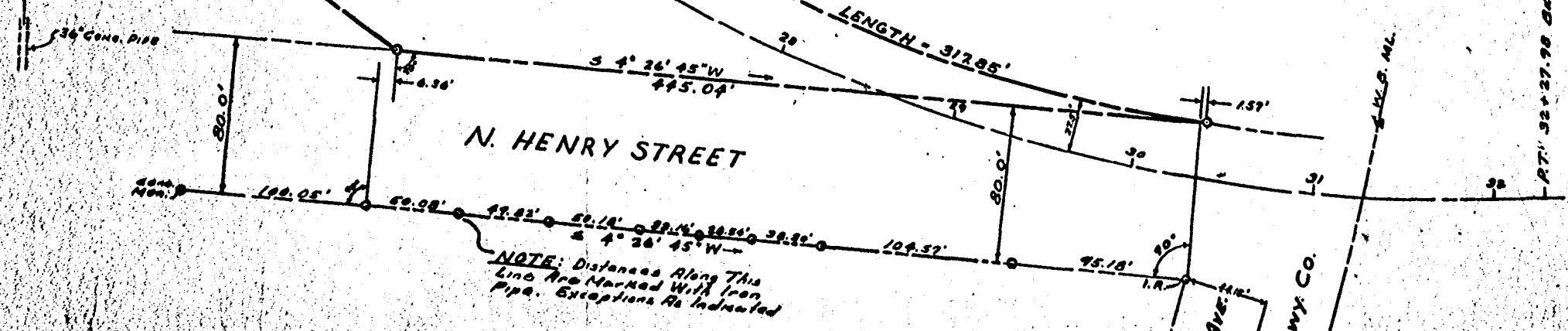


COMMONWEALTH OF VIRGINIA
DEPARTMENT OF HIGHWAYS

WILLIAMSBURG RESTORATION, INC.

WILLIAMSBURG RESTORATION, INC.

Center of Stream is Corporate Line



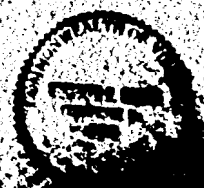
N. HENRY STREET

CHESAPEAKE AVE.
C.F.O. Rwy. Co.

NOTE: Distances Along This Line Are Marked With Iron Pipe. Exceptions As Indicated

PLAT OF LAND
FOR CONVEYANCE TO THE
CITY OF WILLIAMSBURG, VA.
BY
WILLIAMSBURG RESTORATION, INC.

RECORDED IN WILLIAMSBURG, VA.
AND CONTAINING 1.93 ACRES



Recorded January 9, 1957
in
D. B. 28, page 585

SCALE: 1" = 40 FT. OCT 27, 1956