

- This plat vacated by instrument recorded August 15, 1958, by William B. Sours, Jr. in Public Records Office of James City County, Virginia, Book 100, Page 430. 52

TO THE BEST OF MY KNOWLEDGE AND BELIEF ALL OF THE REQUIREMENTS AS SET FORTH IN THE ORDINANCE FOR APPROVING PLATS FOR RECORDATION IN JAMES CITY COUNTY, VIRGINIA HAVE BEEN COMPLIED WITH.

W.B. Sours
 W. B. SOURS, C.L.S. & C.E.
 HAMPTON, VA.

WINSTON TERRACE

PROPERTY OF B.L. LIPMAN
 JAMESTOWN DISTRICT-JAMES CITY COUNTY
 VIRGINIA

SCALE: 1" = 100' DATE: Oct. 10, 1956
 SURVEYED BY: *W.B. Sours*
 W.B. SOURS, C.L.S. & C.E.
 HAMPTON, VIRGINIA

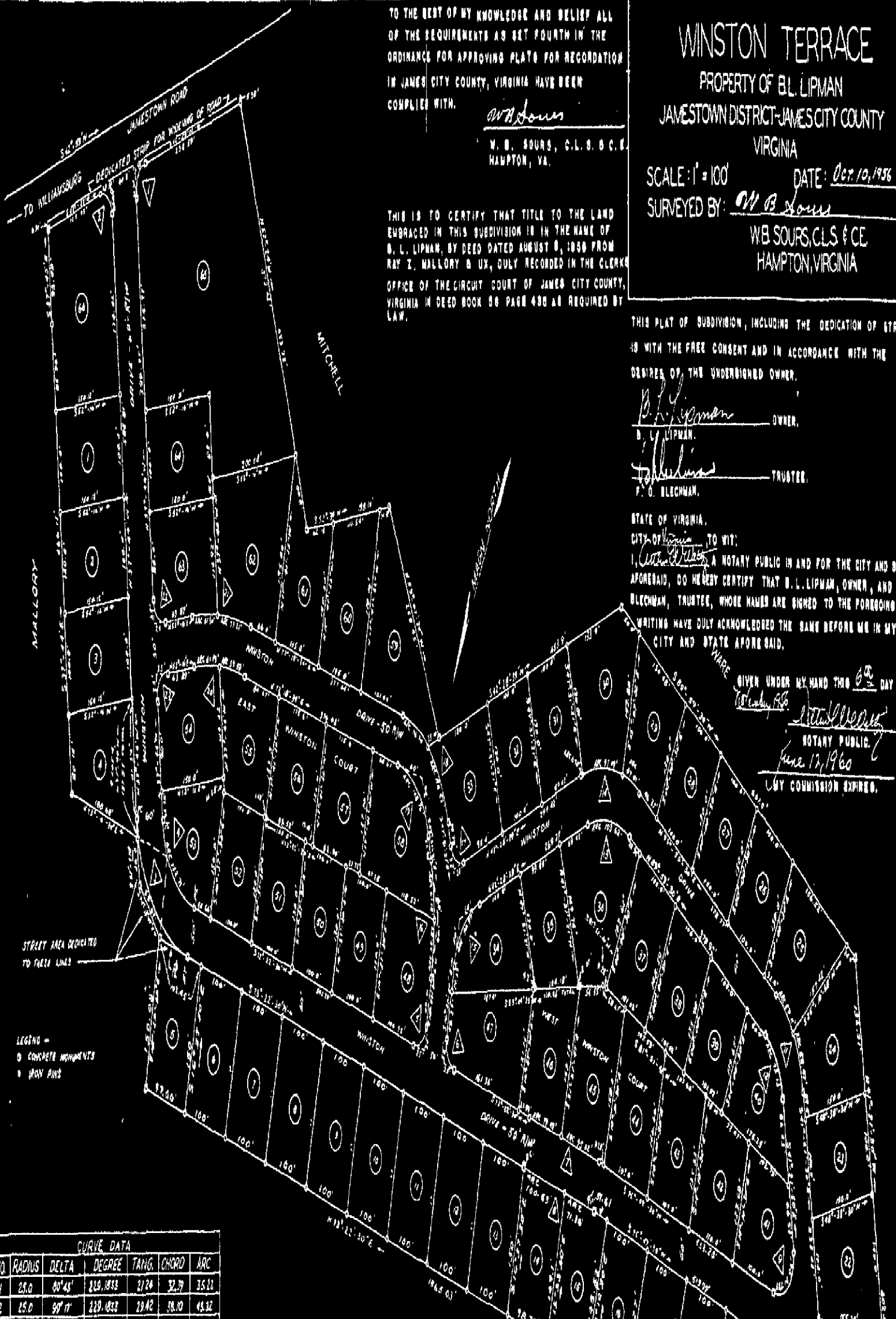
THIS IS TO CERTIFY THAT TITLE TO THE LAND EMBRACED IN THIS SUBDIVISION IS IN THE NAME OF B. L. LIPMAN, BY DEED DATED AUGUST 8, 1958 FROM RAY Z. MALLORY & UX, DULY RECORDED IN THE CLERK'S OFFICE OF THE CIRCUIT COURT OF JAMES CITY COUNTY, VIRGINIA IN DEED BOOK 96 PAGE 430 AS REQUIRED BY LAW.

THIS PLAT OF SUBDIVISION, INCLUDING THE DEDICATION OF STREETS IS WITH THE FREE CONSENT AND IN ACCORDANCE WITH THE ORDERS OF THE UNDERSIGNED OWNER.

B.L. Lipman OWNER
 B. L. LIPMAN
P.O. Blechman TRUSTEE
 P. O. BLECHMAN

STATE OF VIRGINIA,
 CITY OF JAMES CITY, TO WIT:
 I, *Arthur W. Winters* A NOTARY PUBLIC IN AND FOR THE CITY AND STATE AFORESAID, DO HEREBY CERTIFY THAT B. L. LIPMAN, OWNER, AND P. O. BLECHMAN, TRUSTEE, WHOSE NAMES ARE SIGNED TO THE FOREGOING WRITING HAVE DULY ACKNOWLEDGED THE SAME BEFORE ME IN MY CITY AND STATE AFORESAID.

GIVEN UNDER MY HAND THIS 10th DAY OF October, 1956
Arthur W. Winters
 NOTARY PUBLIC
 June 17, 1960
 BY COMMISSION EXPIRES.



STREET AREA DEDICATED TO THESE LINES

LEGEND -
 O CONCRETE MONUMENTS
 * IRON PINS

CURVE DATA						
NO.	RADIUS	DELTA	DEGREE	TANG.	CHORD	ARC
1	25.0	90° 43'	229.1833	27.24	32.39	35.22
2	25.0	90° 11'	229.1833	29.82	36.10	43.32
3	142.057	60° 24' 30"	35.3551	111.83	181.83	194.81
4	102.057	60° 35' 30"	56.1481	78.0	115.48	123.71
5	25.0	90°	229.1833	28.0	35.34	39.27
6	25.0	90°	229.1833	25.0	35.34	39.27
7	4020.38	2° 21'	1.4076	97.93	176.66	174.85
8	4020.38	2° 21'	1.42514	95.97	171.96	171.91
9	36.63	117° 11'	156.417	60.0	65.85	74.92
10	36.63	117° 11'	156.417	60.0	62.50	74.92
11	158.487	40° 39'	41.572	62.60	104.09	112.52
12	88.4972	40° 39'	64.75	40.0	72.09	75.4
13	124.535	41° 36' 01"	45.853	55.0	108.88	113.62
14	174.525	41° 36' 01"	32.7488	77.01	142.57	145.48
15	88.09	89° 06' 19"	64.9670	30.0	86.89	90.97
16	217.109	30° 43' 51"	20.3904	60.0	115.61	112.01
17	25.0	90°	229.1833	25.0	35.36	39.27
18	153.57	60° 24' 30"	37.5092	88.98	153.94	161.28
19	102.57	60° 24' 30"	55.5309	60.0	101.89	108.76
20	346.124	21° 02' 14"	16.5535	61.64	120.46	114.88
21	336.124	21° 02' 14"	14.464	78.0	117.88	118.87
22	25.0	90°	229.1833	25.0	35.36	39.27
23	25.0	90°	229.1833	25.0	35.34	39.27



VIRGINIA, JAMES CITY COUNTY, TO WIT:
 IN THE CLERK'S OFFICE OF THE CIRCUIT COURT FOR JAMES CITY COUNTY, VIRGINIA THIS 6th DAY OF November 1956, THIS MAP WAS PRESENTED AND ADMITTED TO RECORD AS THE LAW DIRECTS IN PLAT BOOK NO. PAGE 52

TESTE: *W.B. Sours*
 CLERK.
 BY: _____
 DEPUTY CLERK.

LINE ON EAST EDGE OF OLD CONCRETE MONUMENT

