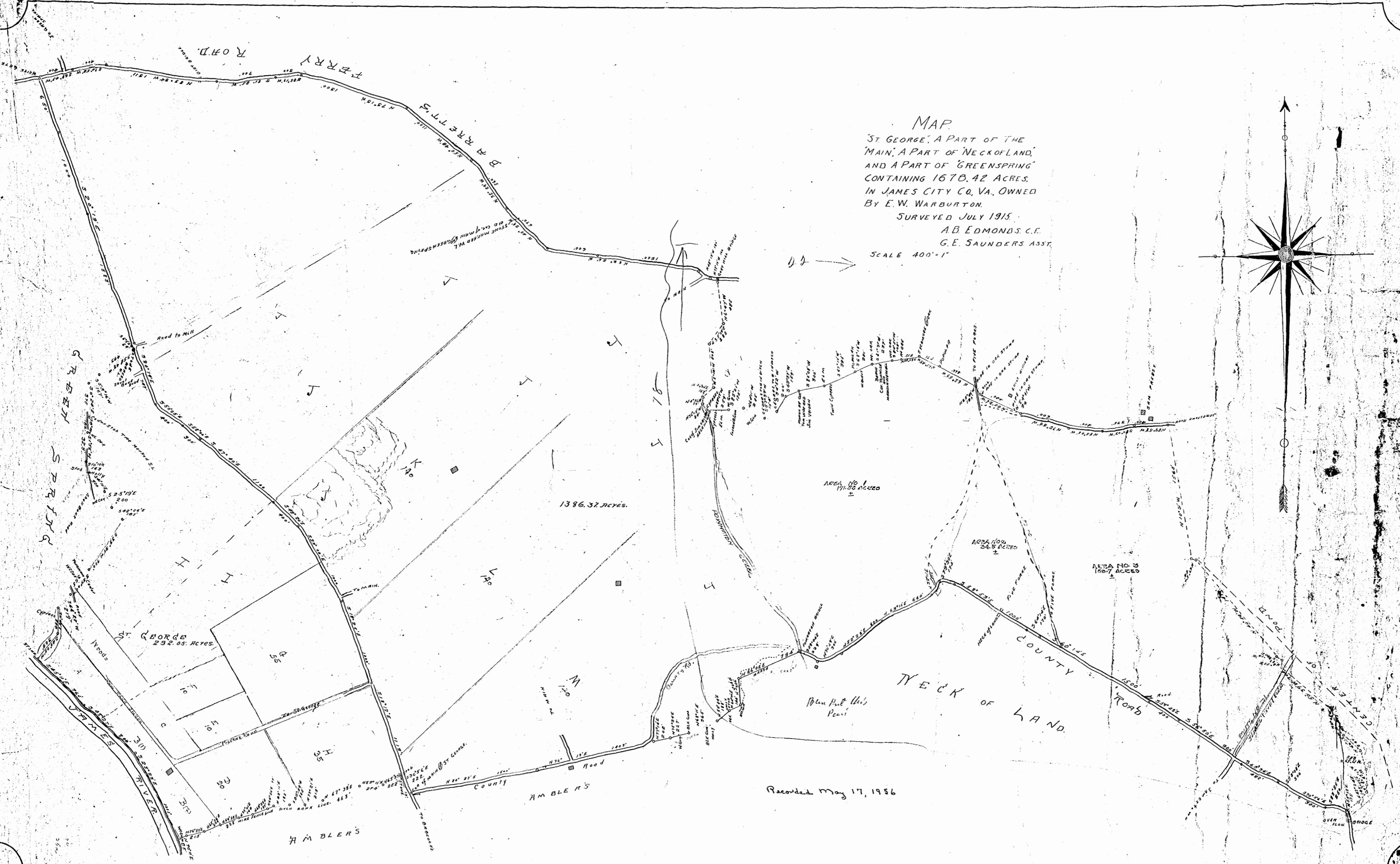
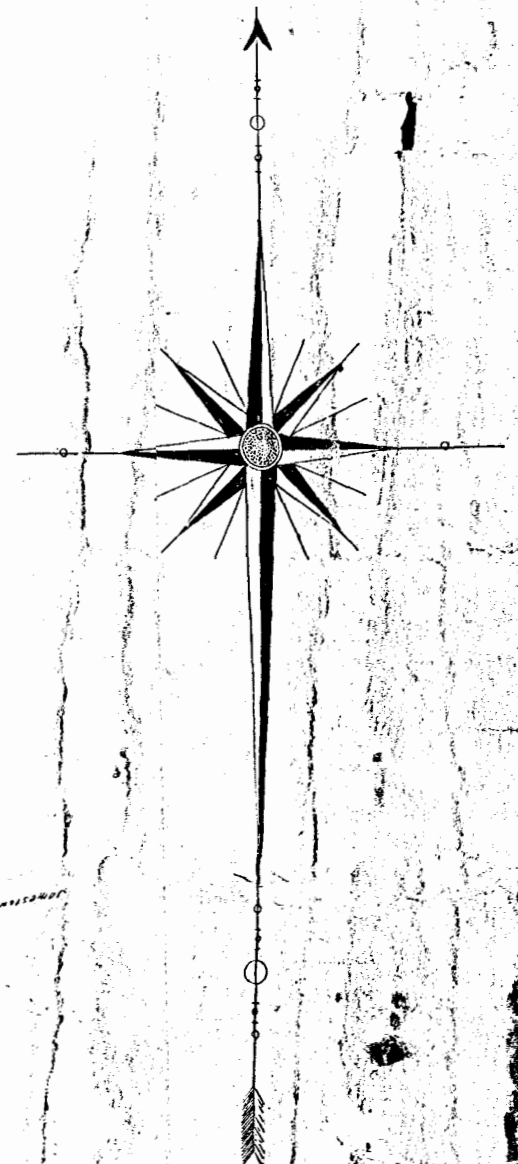


MAP
 'ST. GEORGE', A PART OF THE
 'MAIN', A PART OF 'NECK OF LAND',
 AND A PART OF 'GREENSPRING'
 CONTAINING 1678.42 ACRES.
 IN JAMES CITY CO, VA., OWNED
 BY E. W. WARBURTON.

SURVEYED JULY 1915.
 A. B. EDMONDS, C.E.
 G. E. SAUNDERS, ASST.

SCALE 400' = 1"



Recorded May 17, 1956