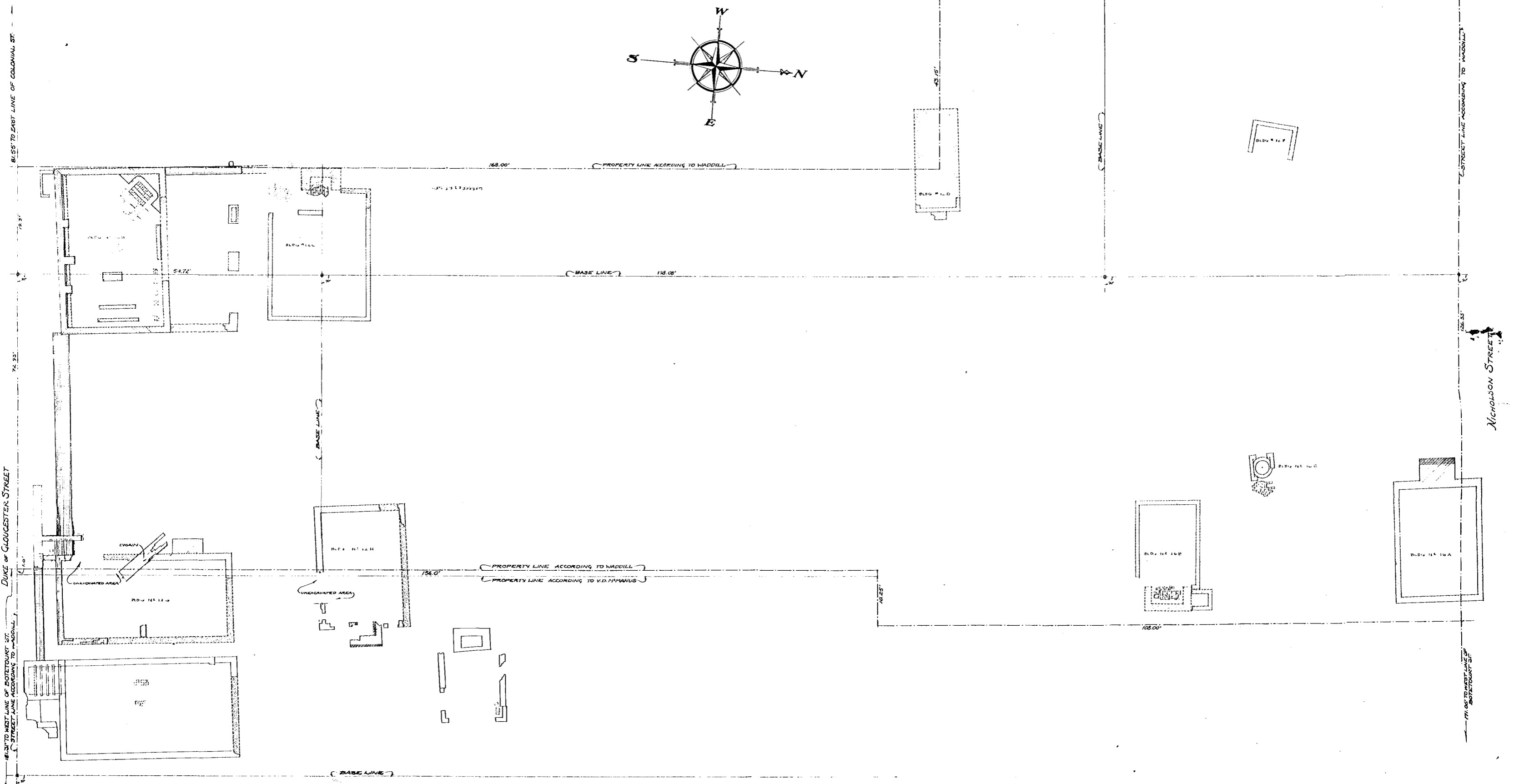


Virginia E. R. ...
 Colonial Williamsburg, Inc.
 Records Department
 1000 ...
 1952



- LEGEND**
- EARLIEST COLONIAL BRICKWORK
 - EARLY COLONIAL BRICKWORK
 - COLONIAL BRICKWORK
 - FILL CONTAINING BRICK BATS AND SHELL MORTAR

ARCHAEOLOGICAL SURVEY OF FOUNDATIONS ON COLONIAL LOT No. 48
 AND PORTION OF LOT No. 49

SCALE 1/8" = 1'-0"

COLONIAL WILLIAMSBURG INC.
 ARCHITECTURAL DEPARTMENT
 MADE BY J.M.K. and R.T.W.
 TRACED BY R.T.W.
 AUGUST 15, 1952

Block-18 Area-H and part Area-E

Sheet 1084