

The Attorney says can you reduce
this plat to half inch scale.

PINE DELL
Recorded Feb 8, 1955

SECTION A

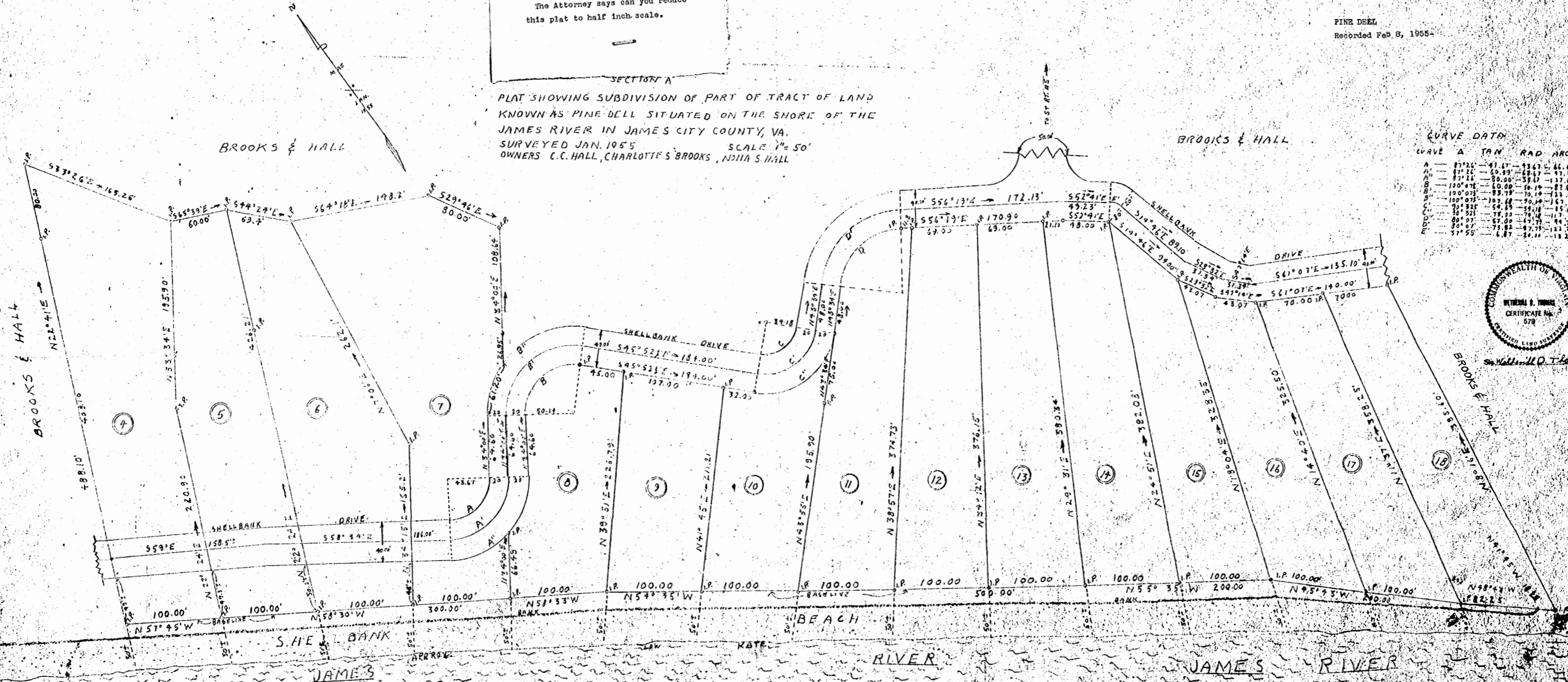
PLAT SHOWING SUBDIVISION OF PART OF TRACT OF LAND
KNOWN AS PINE DELL SITUATED ON THE SHORE OF THE
JAMES RIVER IN JAMES CITY COUNTY, VA.
SURVEYED JAN. 1955 SCALE 1" = 50'
OWNERS C.C. HALL, CHARLOTTE S. BROOKS, MOLLIE S. HALL

BROOKS & HALL

BROOKS & HALL

CURVE DATA

CURVE	TAN	RAD	ARC
A	87°26'	41.67'	134.70'
A'	87°26'	60.89'	137.66'
B	100°07'	80.00'	137.67'
B'	100°07'	80.00'	137.67'
C	90°32'	54.85'	101.58'
C'	90°32'	75.00'	117.51'
D	80°07'	67.00'	117.79'
D'	80°07'	73.82'	121.76'
E	57°55'	6.87'	11.24'



MOLLIE S. HALL