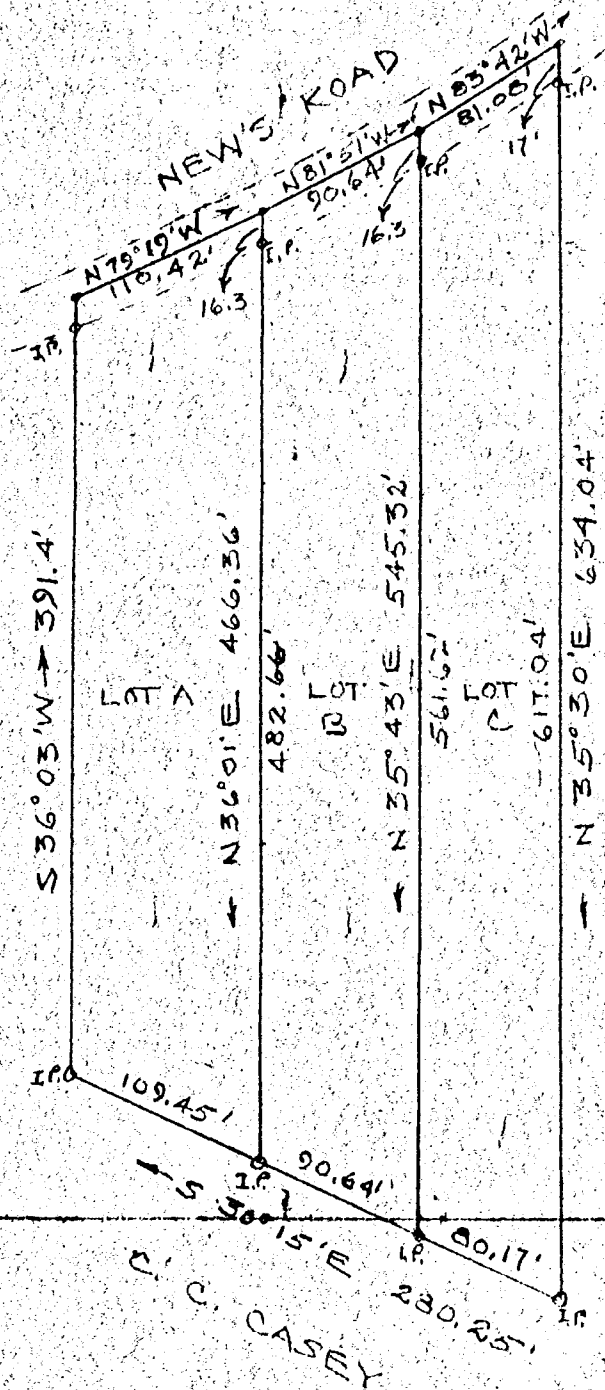


BERNARD GLASS



PLAT SHOWING THREE LOTS OF LAND
BELONGING TO D.C. RENICK. IN JAMES
CITY COUNTY, VA.

SURVEYED AUGUST, 1963

AVERAGE LOT = .98 ACRES

SCALE 1"=100'

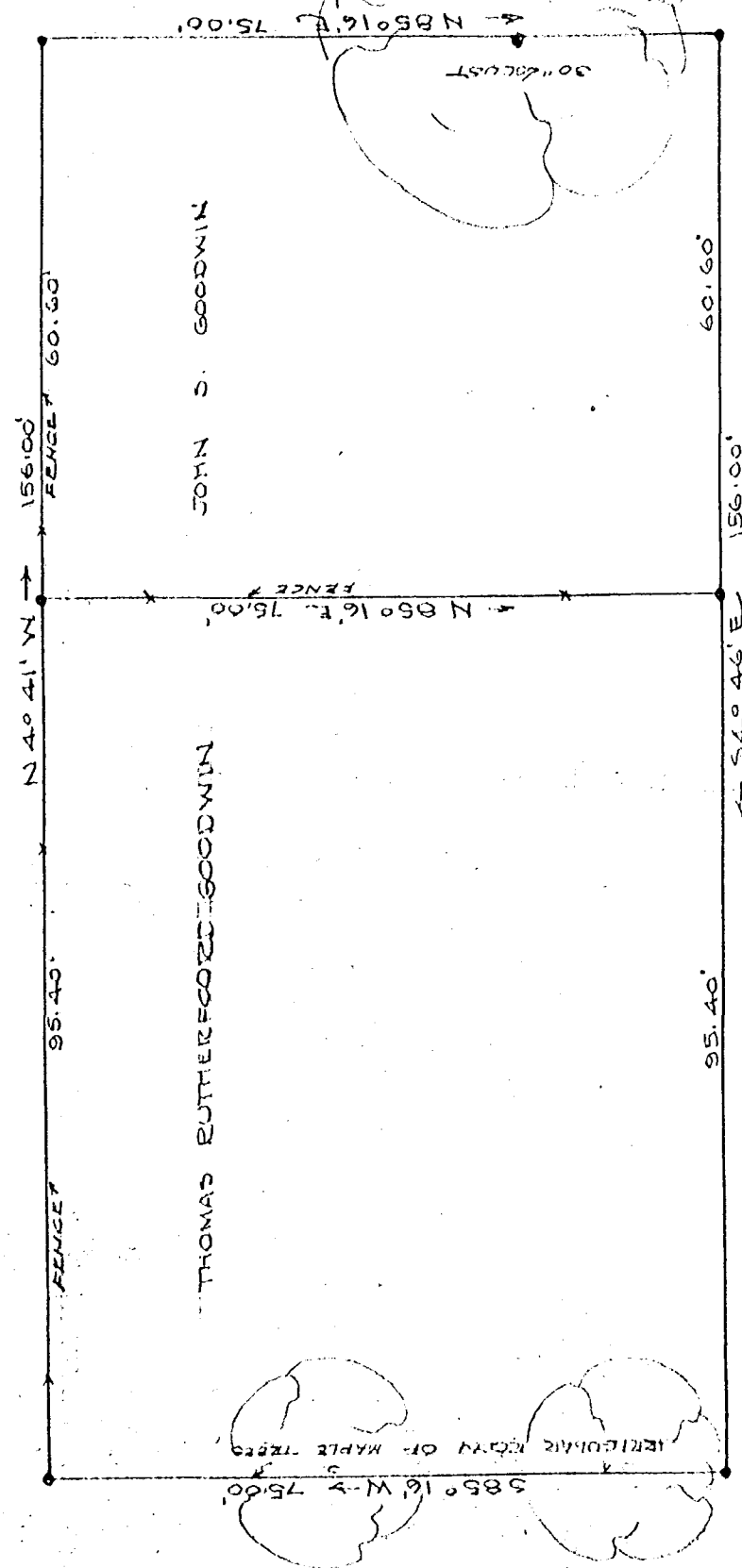
W.D. THOMAS, -C.L.S.-579

LINE IN CENTER OF ROAD AS INDICATED

Renick
to
Harris

FOSTER, FORMERLY

CARLTON CASEY



Restoration
to
Thos Rutherford Goodwin
John S. Goodwin

NASSAU STREET

PLAT SHOWING CERTAIN PROPERTIES OF THE
W.D. THOMAS ESTATE

SITUATED IN THE CITY OF WILLIAMSBURG
VIRGINIA

SURVEYED APRIL 5, 1954 SCALE 1"=20'

PROPERTY LINES SHOWN ARE IN ACCORDANCE
WITH DIMENSIONS GIVEN IN DEEDS P. 580, 5
OCCUPATIONAL LINES INDICATED BY GOODWIN
HEIRS MENTIONED ABOVE

W.D. THOMAS

APR 10, 1963

NO. 40 P. 5