

CONCRETE MONUMENTS

STANDARD MON - 5/8 INCHES SQUARE, 30 INCHES LONG. MATERIAL - CONCRETE, LEAD PLUG IN TOP MIXTURE NOT AVAILABLE  
 CITY MON - CITY STANDARD - 1941

NOTES

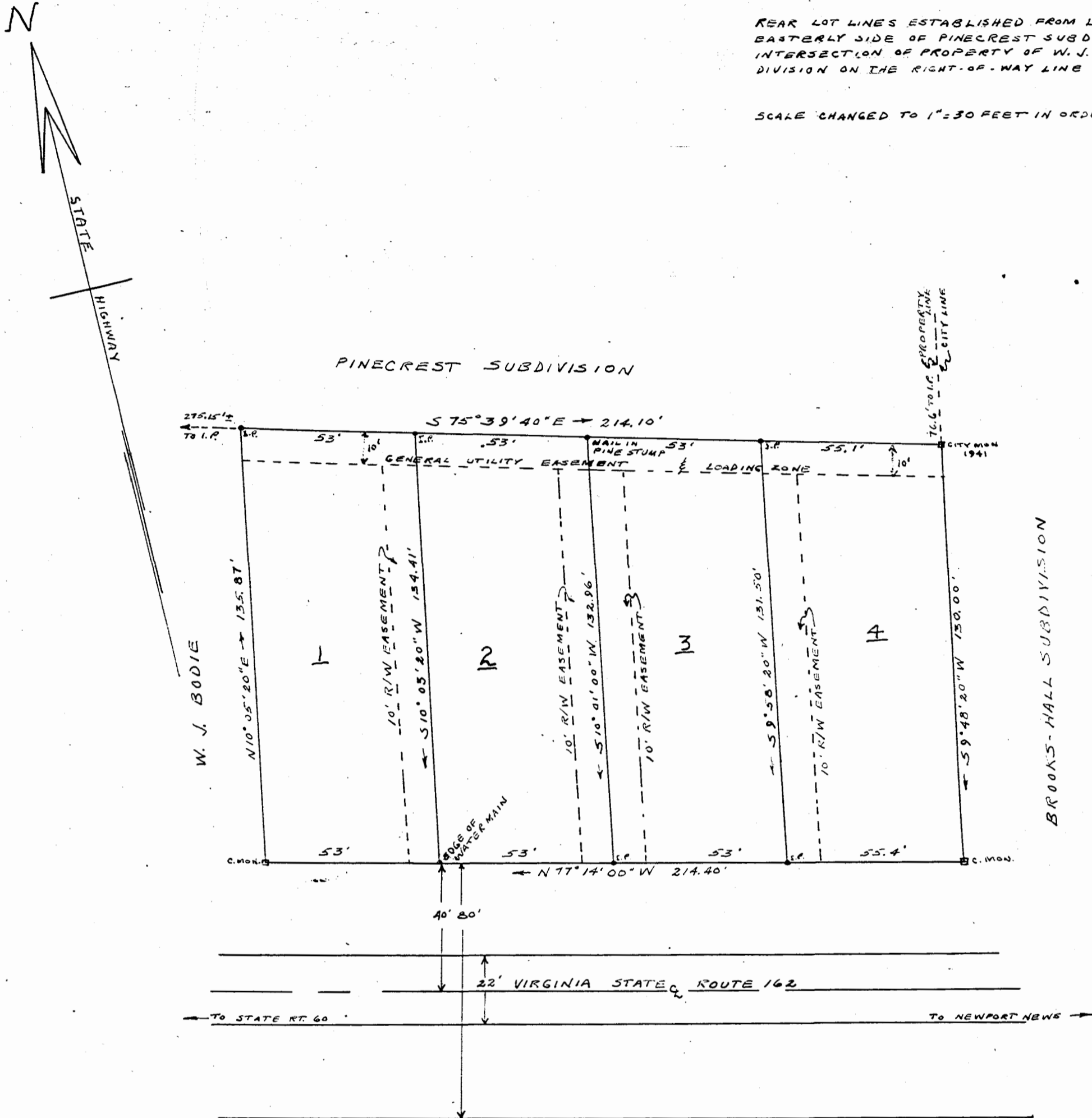
CONCRETE MONUMENTS, AS SET UP UNDER PARAGRAPH FOUR, PART SEVEN OF CHAPTER 20, "SUBDIVISIONS", NOT AVAILABLE IN THIS LOCALITY WITHOUT SPECIAL CONSTRUCTION; THEREFORE, CONCRETE MONUMENTS STANDARD FOR THE ADJOINING LOCALITIES USED.

EASEMENTS ARE LIMITED TO TEN FOOT RIGHT-OF-WAY EASEMENT ALONG ONE SIDE OF EACH LOT AND A GENERAL UTILITY IN REAR.

ANY LOT, TITLE OF WHICH IS TRANSFERRED, MUST CONTAIN A MINIMUM WIDTH AND AREA AS SHOWN ON THIS PLAT.

REAR LOT LINES ESTABLISHED FROM LINE OF IRON PIPES ON EASTERLY SIDE OF PINECREST SUBDIVISION AND IRON PIPE AT THE INTERSECTION OF PROPERTY OF W. J. BODIE AND PINECREST SUBDIVISION ON THE RIGHT-OF-WAY LINE OF PAGE STREET.

SCALE CHANGED TO 1"=30 FEET IN ORDER TO SHOW DETAILS.



HUNT'S SUBDIVISION

PLAT SHOWING SUBDIVISION BELONGING TO ANNE H. MORECOCK SITUATED IN THE CITY OF WILLIAMSBURG, VIRGINIA. SURVEYED DEC. 1953

SCALE 1"=30' W. D. THOMAS - C.L.S. 579

I, WETHERILL D. THOMAS, A REGISTERED SURVEYOR IN THE STATE OF VIRGINIA, HAVE MADE THE SURVEY OF THE SUBDIVISION HEREBY SHOWN, AND ALL MONUMENTS DO EXIST AND THEIR LOCATION, SIZE AND MATERIALS (SEE CONCRETE MONUMENTS) ARE CORRECTLY SHOWN AND THAT TO THE BEST OF MY KNOWLEDGE ALL REQUIREMENTS HAVE BEEN COMPLIED WITH EXCEPTING THE NOTES LISTED ABOVE.

SIGNED: *Wetherill D. Thomas*  
 WETHERILL D. THOMAS  
 ROUTE 2, BOX 30  
 WILLIAMSBURG, VIRGINIA

I, ANNE H. MORECOCK, OWNER, DO HEREBY STATE THAT THE SUBDIVISION CALLED HUNT'S SUBDIVISION IS DESCRIBED AS FOLLOWS:

BEGINNING AT A CONCRETE MONUMENT ON STATE ROUTE 162 ADJACENT TO THE LAND OF W. J. BODIE; THENCE, NORTH TEN DEGREES FIVE MINUTES TWENTY SECONDS EAST A DISTANCE OF 135.87 FEET TO AN IRON PIPE; THENCE SOUTH SEVENTY-FIVE DEGREES THIRTY-NINE MINUTES FORTY SECONDS EAST A DISTANCE OF 214.10 FEET TO A CITY MONUMENT; THENCE, SOUTH NINE DEGREES FORTY-EIGHT MINUTES TWENTY SECONDS WEST A DISTANCE OF 130.00 FEET TO A CONCRETE MONUMENT ON THE RIGHT-OF-WAY OF STATE ROUTE 162; THENCE, NORTH SEVENTY-SEVEN DEGREES FOURTEEN MINUTES ZERO SECONDS WEST A DISTANCE OF 214.40 FEET TO THE POINT OF BEGINNING, BEING BOUNDED ON THE WEST BY A LOT BELONGING TO W. J. BODIE, ON THE NORTH BY THE PINECREST SUBDIVISION, ON THE EAST BY THE BROOKS-HALL SUBDIVISION, AND ON THE SOUTH BY STATE ROUTE 162.

AS SHOWN ON THIS PLAT IS WITH FREE CONSENT AND IS IN ACCORDANCE WITH MY DESIRES.

SUBSCRIBED BEFORE ME AND SWORN TO BEFORE ME THIS 11TH DAY OF DECEMBER, 1953

*Ernie Plunkett* CLERK

SIGNED: *Anne H. Morecock*  
 MRS. ANNE H. MORECOCK  
 401 CAPITOL LANDING ROAD  
 WILLIAMSBURG, VIRGINIA

PLACE OF LAST TRANSFER OF TITLE: WILL BOOK 6, PAGE 365 FROM ANNIE MAHONE HUNT TO ANNE HUNT MORECOCK.