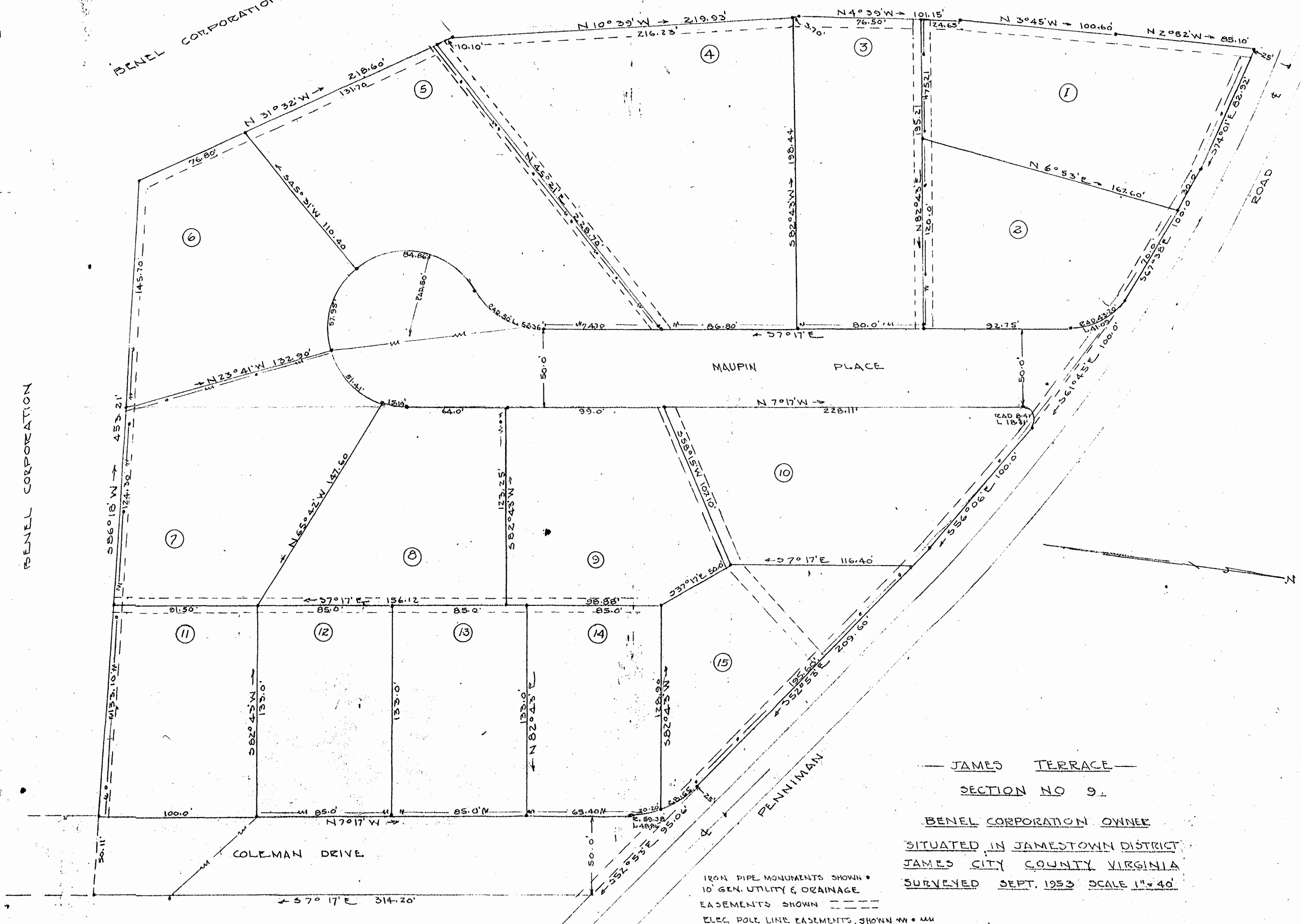


JAMES TERRACE SECTION #5

BENEL CORPORATION

BENEL CORPORATION



JAMES TERRACE SECTION NO 9.

BENEL CORPORATION OWNER
SITUATED IN JAMESTOWN DISTRICT
JAMES CITY COUNTY VIRGINIA
SURVEYED SEPT. 1953 SCALE 1" = 40'

IRON PIPE MONUMENTS SHOWN •
10' GEN. UTILITY & DRAINAGE
EASEMENTS SHOWN - - - -
ELEC. POLE LINE EASEMENTS, SHOWN W • W
TEL. POLE LINE " " " "

TRUSTEES BAPTIST CHURCH