

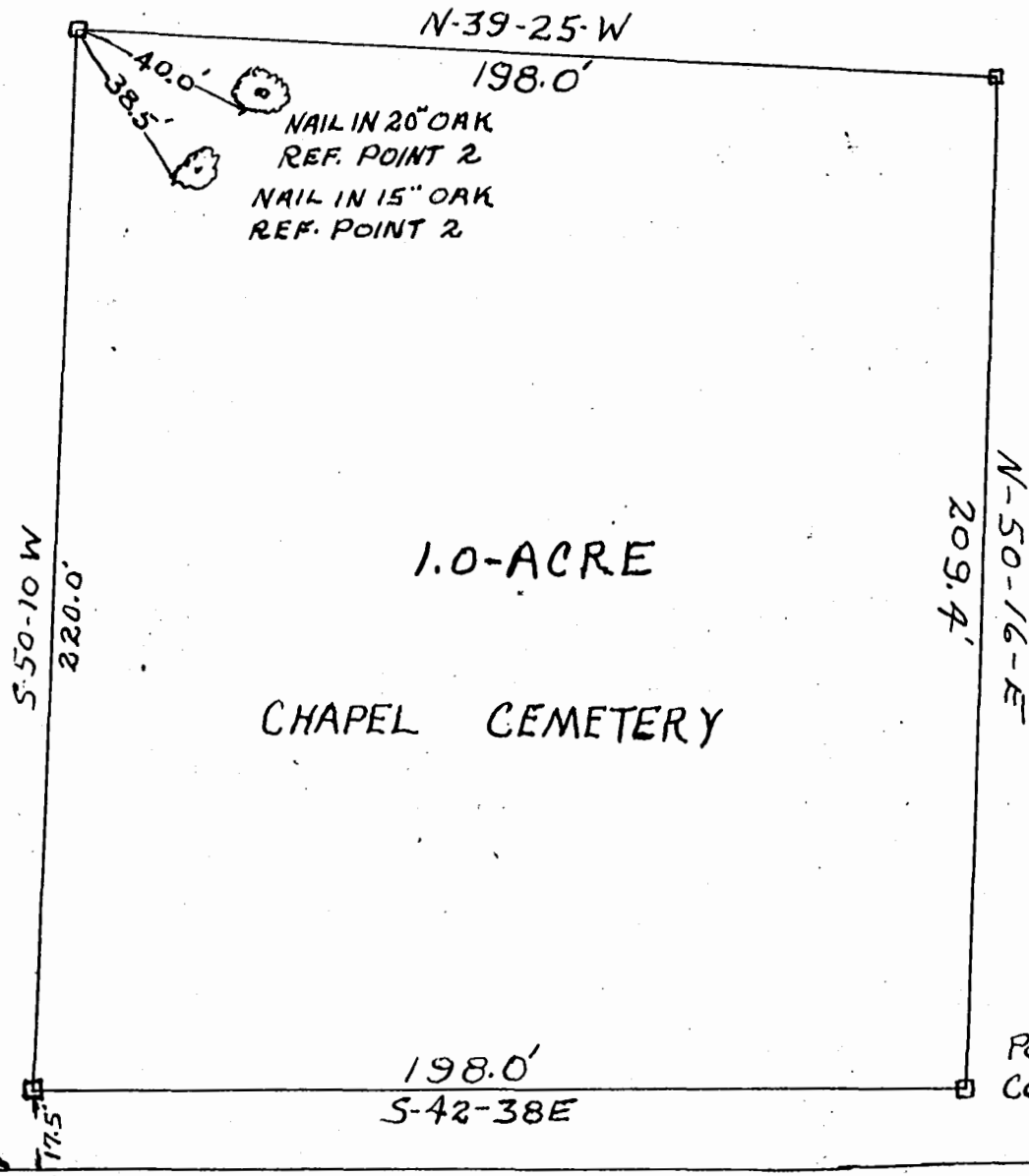
J. H. HUGHES

POINT No. 2
CONC. MON.

POINT No. 3
CONC. MON.

J. H. HUGHES

J. H. HUGHES



1.0-ACRE

CHAPEL CEMETERY

POINT No. 1
CONC. MON.

POINT No. 4
CONC. MON.

EDGE CONC. RD.

U.S. HIGHWAY No. 60 ← TO WILLIAMSBURG ←

PLAT OF JAMES CITY
 CHAPEL CEMETERY
 NORGE, JAMES CITY CO. VA.
 SURVEYED BY D.W. WARE 10-24-52
 CERTIFIED BY W. D. THOMAS, C.L.S. 579
 SCALE: 1" = 40'