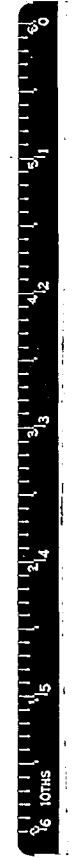
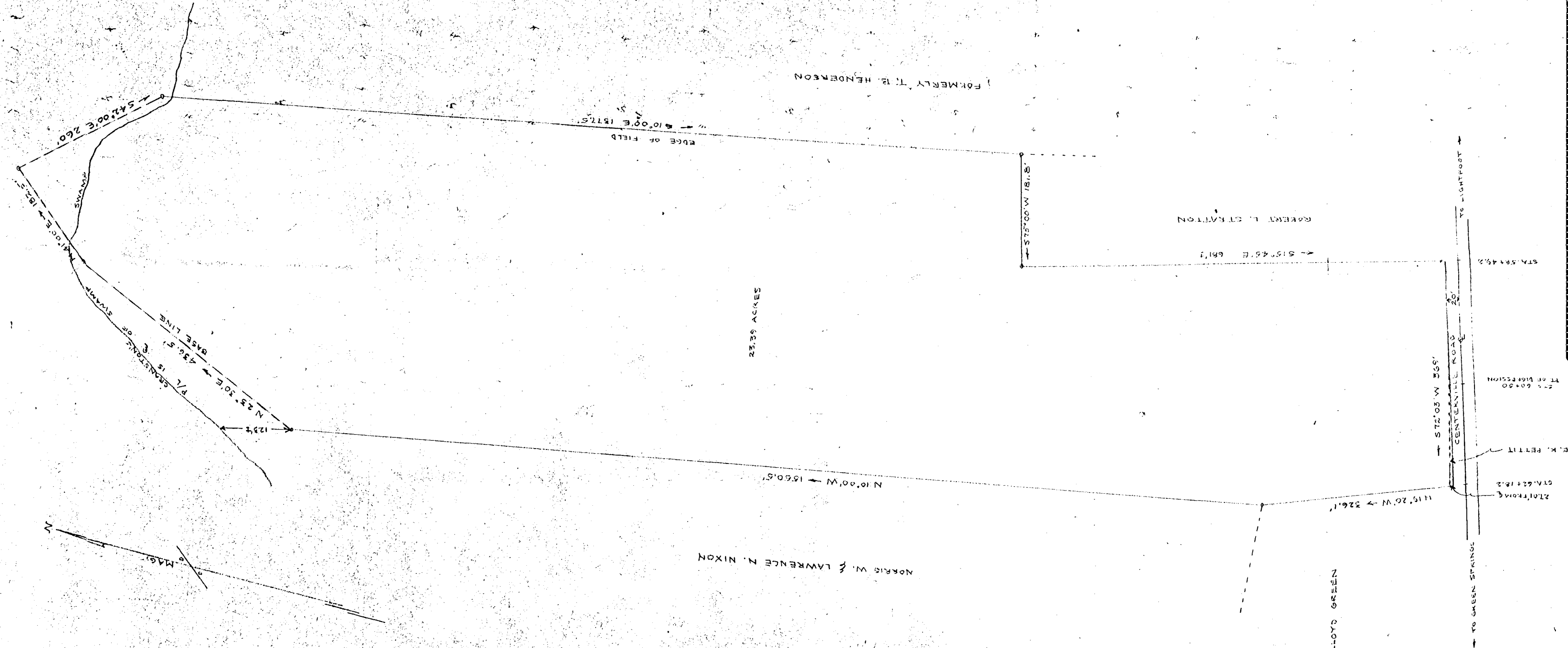


CHAS. E. YOUNG



PART OF REMAINING PORTION OF LAND ACQUIRED IN
 1880 BY JAMES G. YOUNG, JAMES G. YOUNG, JR., JAMES G. YOUNG, III, AND
 JAMES G. YOUNG, IV, AS SHOWN ON MAP OF THE SAID LANDS
 FILED FOR RECORD IN THE OFFICE OF THE CLERK OF THE
 SUPERIOR COURT OF THE DISTRICT OF COLUMBIA, D.C.,
 IN 1952.
 SCALE: 1" = 100'

ALL DATA FOR PROPERTY LINES TAKEN BY THE STATE HIGHWAY
 DEPARTMENT FROM AERIAL PHOTOGRAPHS TAKEN BY THE U.S. AIR FORCE
 IN 1952.
 LEGEND: STIPPLED ON ALL CORNERS, UNLESS OTHERWISE NOTED.