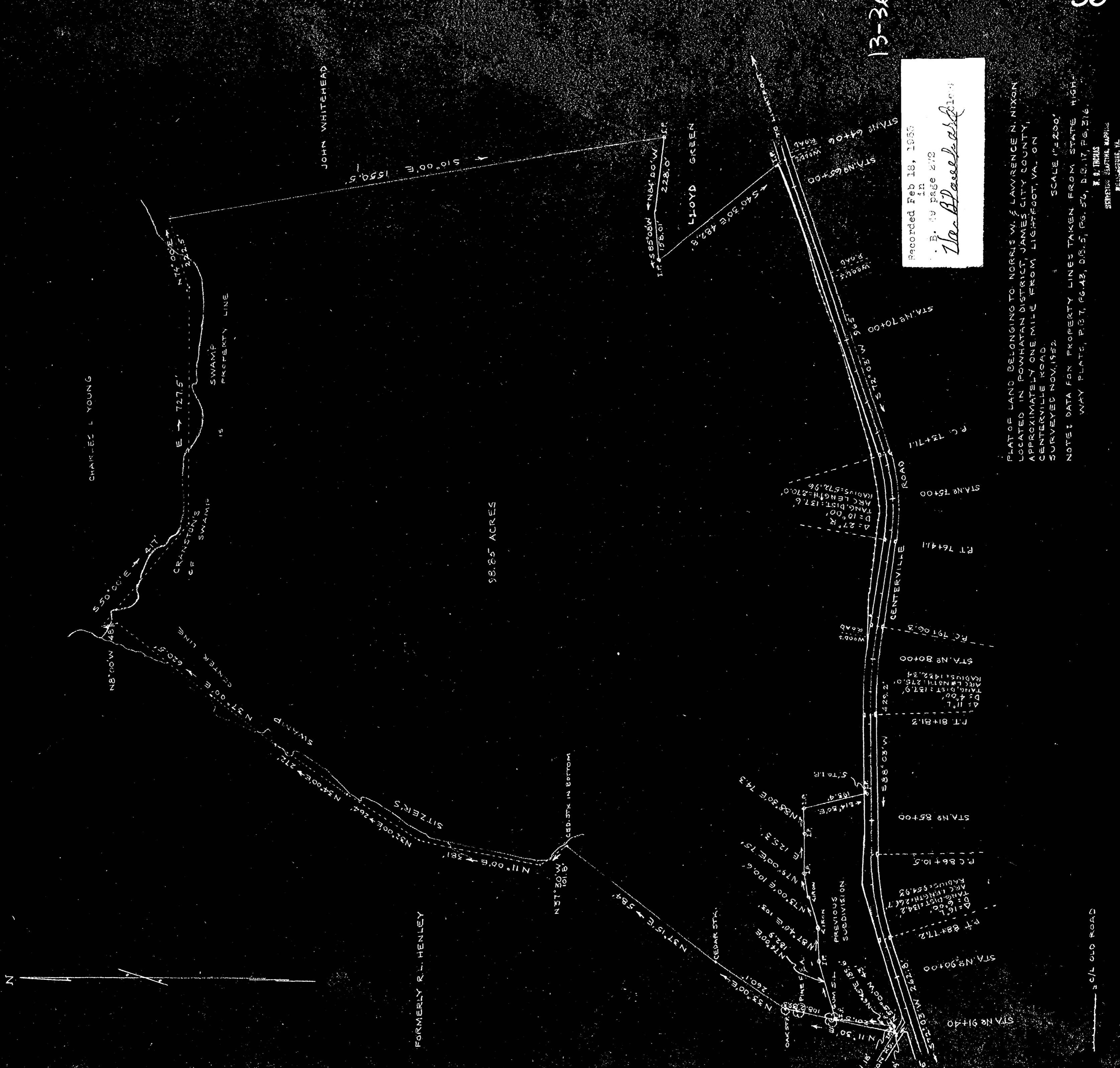


DATA	REMARKS
STATION	CONVERGENCE OF P/L AND R/W
0+00	30.7
0+10	20.1
0+20	20.1
0+30	20.1
0+40	20.1
0+50	20.1
0+60	20.1
0+70	20.1
0+80	20.1
0+90	20.1
1+00	20.1
1+10	20.1
1+20	20.1
1+30	20.1
1+40	20.1
1+50	20.1
1+60	20.1
1+70	20.1
1+80	20.1
1+90	20.1
2+00	20.1
2+10	20.1
2+20	20.1
2+30	20.1
2+40	20.1
2+50	20.1
2+60	20.1
2+70	20.1
2+80	20.1
2+90	20.1
3+00	20.1
3+10	20.1
3+20	20.1
3+30	20.1
3+40	20.1
3+50	20.1
3+60	20.1
3+70	20.1
3+80	20.1
3+90	20.1
4+00	20.1
4+10	20.1
4+20	20.1
4+30	20.1
4+40	20.1
4+50	20.1
4+60	20.1
4+70	20.1
4+80	20.1
4+90	20.1
5+00	20.1
5+10	20.1
5+20	20.1
5+30	20.1
5+40	20.1
5+50	20.1
5+60	20.1
5+70	20.1
5+80	20.1
5+90	20.1
6+00	20.1
6+10	20.1
6+20	20.1
6+30	20.1
6+40	20.1
6+50	20.1
6+60	20.1
6+70	20.1
6+80	20.1
6+90	20.1
7+00	20.1
7+10	20.1
7+20	20.1
7+30	20.1
7+40	20.1
7+50	20.1
7+60	20.1
7+70	20.1
7+80	20.1
7+90	20.1
8+00	20.1
8+10	20.1
8+20	20.1
8+30	20.1
8+40	20.1
8+50	20.1
8+60	20.1
8+70	20.1
8+80	20.1
8+90	20.1
9+00	20.1
9+10	20.1
9+20	20.1
9+30	20.1
9+40	20.1
9+50	20.1
9+60	20.1
9+70	20.1
9+80	20.1
9+90	20.1
10+00	20.1
10+10	20.1
10+20	20.1
10+30	20.1
10+40	20.1
10+50	20.1
10+60	20.1
10+70	20.1
10+80	20.1
10+90	20.1
11+00	20.1
11+10	20.1
11+20	20.1
11+30	20.1
11+40	20.1
11+50	20.1
11+60	20.1
11+70	20.1
11+80	20.1
11+90	20.1
12+00	20.1
12+10	20.1
12+20	20.1
12+30	20.1
12+40	20.1
12+50	20.1
12+60	20.1
12+70	20.1
12+80	20.1
12+90	20.1
13+00	20.1
13+10	20.1
13+20	20.1
13+30	20.1
13+40	20.1
13+50	20.1
13+60	20.1
13+70	20.1
13+80	20.1
13+90	20.1
14+00	20.1
14+10	20.1
14+20	20.1
14+30	20.1
14+40	20.1
14+50	20.1
14+60	20.1
14+70	20.1
14+80	20.1
14+90	20.1
15+00	20.1
15+10	20.1
15+20	20.1
15+30	20.1
15+40	20.1
15+50	20.1
15+60	20.1
15+70	20.1
15+80	20.1
15+90	20.1
16+00	20.1
16+10	20.1
16+20	20.1
16+30	20.1
16+40	20.1
16+50	20.1
16+60	20.1
16+70	20.1
16+80	20.1
16+90	20.1
17+00	20.1
17+10	20.1
17+20	20.1
17+30	20.1
17+40	20.1
17+50	20.1
17+60	20.1
17+70	20.1
17+80	20.1
17+90	20.1
18+00	20.1
18+10	20.1
18+20	20.1
18+30	20.1
18+40	20.1
18+50	20.1
18+60	20.1
18+70	20.1
18+80	20.1
18+90	20.1
19+00	20.1
19+10	20.1
19+20	20.1
19+30	20.1
19+40	20.1
19+50	20.1
19+60	20.1
19+70	20.1
19+80	20.1
19+90	20.1
20+00	20.1
20+10	20.1
20+20	20.1
20+30	20.1
20+40	20.1
20+50	20.1
20+60	20.1
20+70	20.1
20+80	20.1
20+90	20.1
21+00	20.1
21+10	20.1
21+20	20.1
21+30	20.1
21+40	20.1
21+50	20.1
21+60	20.1
21+70	20.1
21+80	20.1
21+90	20.1
22+00	20.1
22+10	20.1
22+20	20.1
22+30	20.1
22+40	20.1
22+50	20.1
22+60	20.1
22+70	20.1
22+80	20.1
22+90	20.1
23+00	20.1
23+10	20.1
23+20	20.1
23+30	20.1
23+40	20.1
23+50	20.1
23+60	20.1
23+70	20.1
23+80	20.1
23+90	20.1
24+00	20.1
24+10	20.1
24+20	20.1
24+30	20.1
24+40	20.1
24+50	20.1
24+60	20.1
24+70	20.1
24+80	20.1
24+90	20.1
25+00	20.1
25+10	20.1
25+20	20.1
25+30	20.1
25+40	20.1
25+50	20.1
25+60	20.1
25+70	20.1
25+80	20.1
25+90	20.1
26+00	20.1
26+10	20.1
26+20	20.1
26+30	20.1
26+40	20.1
26+50	20.1
26+60	20.1
26+70	20.1
26+80	20.1
26+90	20.1
27+00	20.1
27+10	20.1
27+20	20.1
27+30	20.1
27+40	20.1
27+50	20.1
27+60	20.1
27+70	20.1
27+80	20.1
27+90	20.1
28+00	20.1
28+10	20.1
28+20	20.1
28+30	20.1
28+40	20.1
28+50	20.1
28+60	20.1
28+70	20.1
28+80	20.1
28+90	20.1
29+00	20.1
29+10	20.1
29+20	20.1
29+30	20.1
29+40	20.1
29+50	20.1
29+60	20.1
29+70	20.1
29+80	20.1
29+90	20.1
30+00	20.1



Recorded Feb 18, 1952  
 in  
 B. 10 page 212  
*Va. Board of Survey*

PLAT OF LAND BELONGING TO NORRIS W. & LAWRENCE N. NIXON  
 LOCATED IN POWHATAN DISTRICT, JAMES CITY COUNTY,  
 APPROXIMATELY ONE MILE FROM LIGHTFOOT, VA. ON  
 CENTERVILLE ROAD  
 SURVEYED NOV. 1952  
 SCALE 1"=200'  
 NOTE: DATA FOR PROPERTY LINES TAKEN FROM STATE HIGH-  
 WAY PLATS, P.B. 7, P. 6-43, D.B. 5, P. 6-17, P. 6-316.  
 W. B. THOMAS  
 REGISTERED SURVEYOR  
 WILLIAMSBURG, VA. C.L. 5579