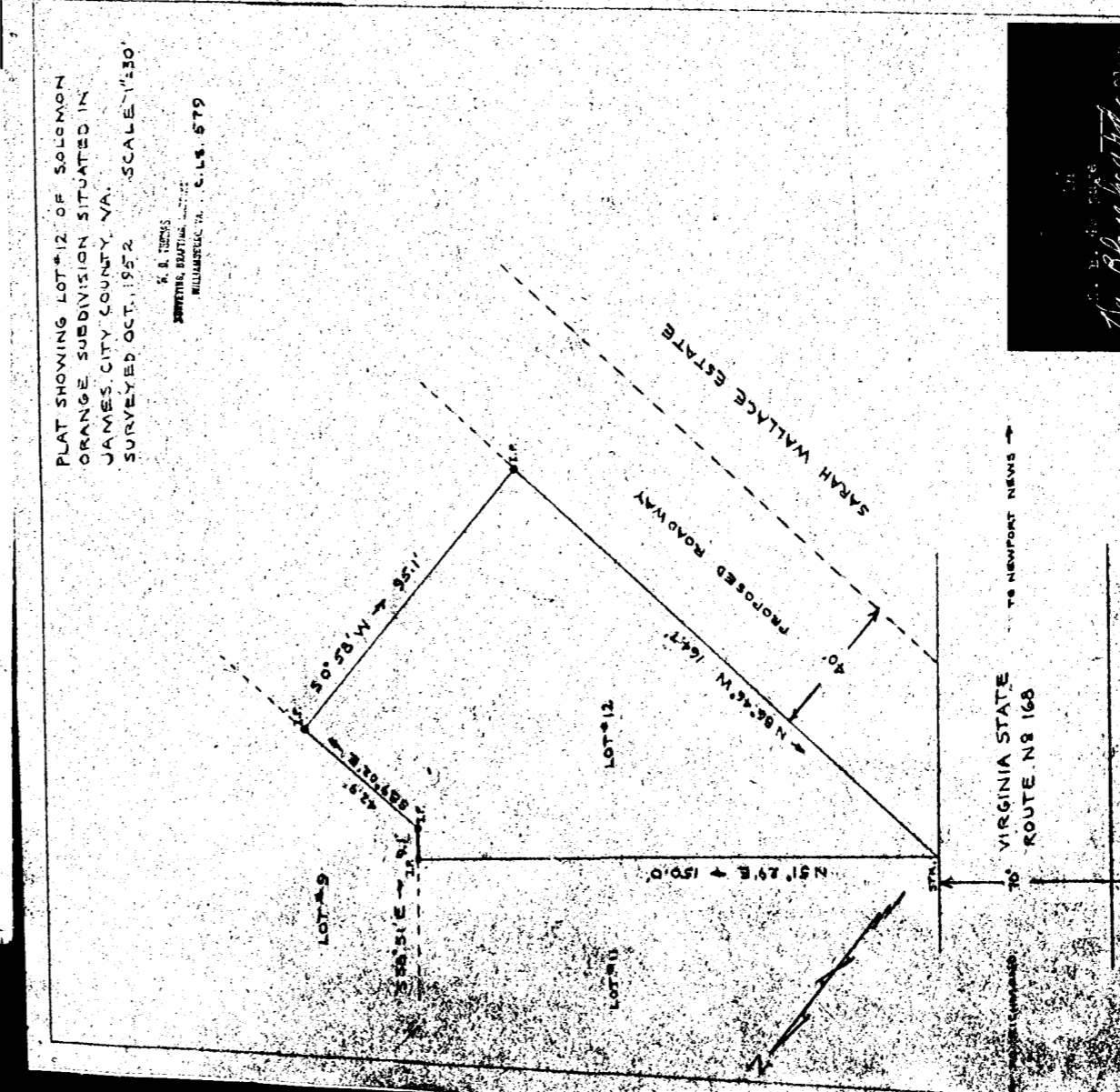
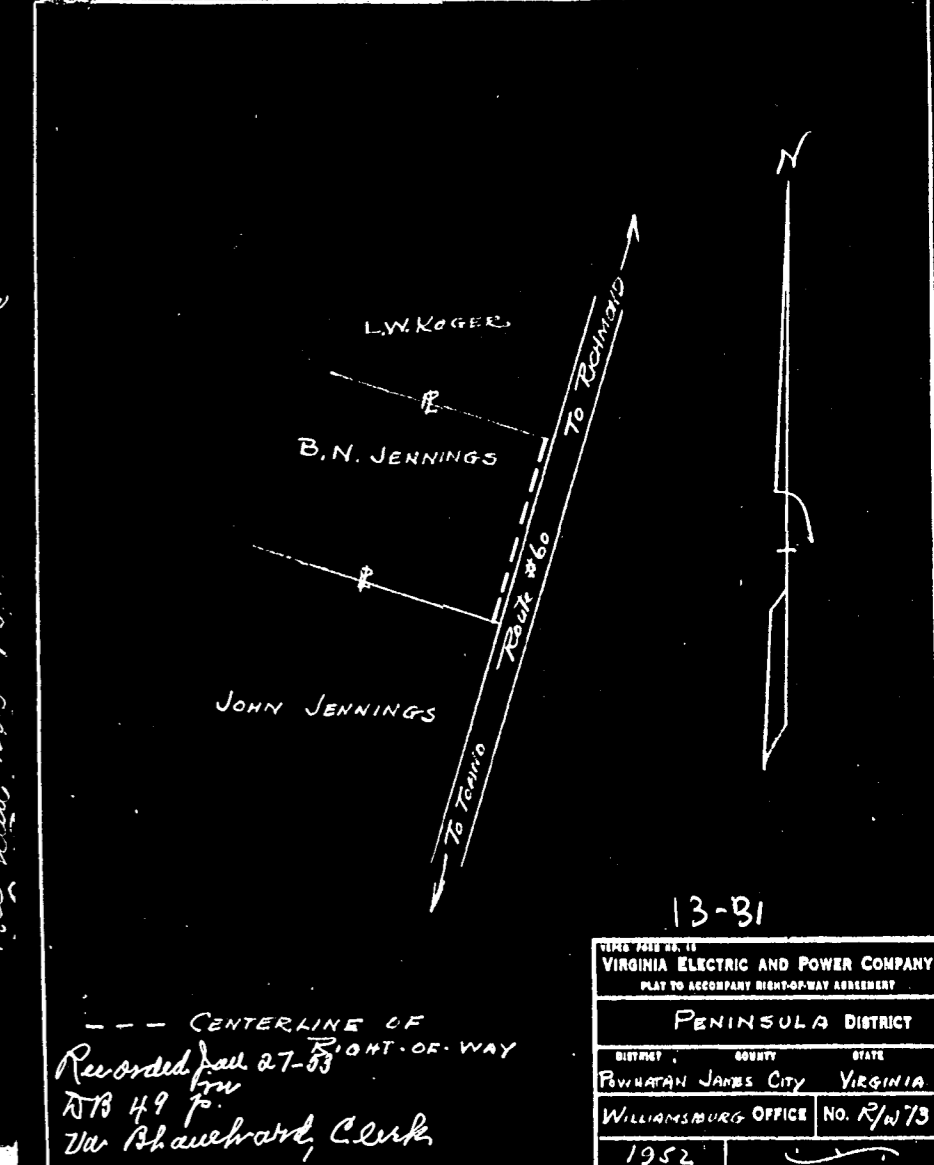
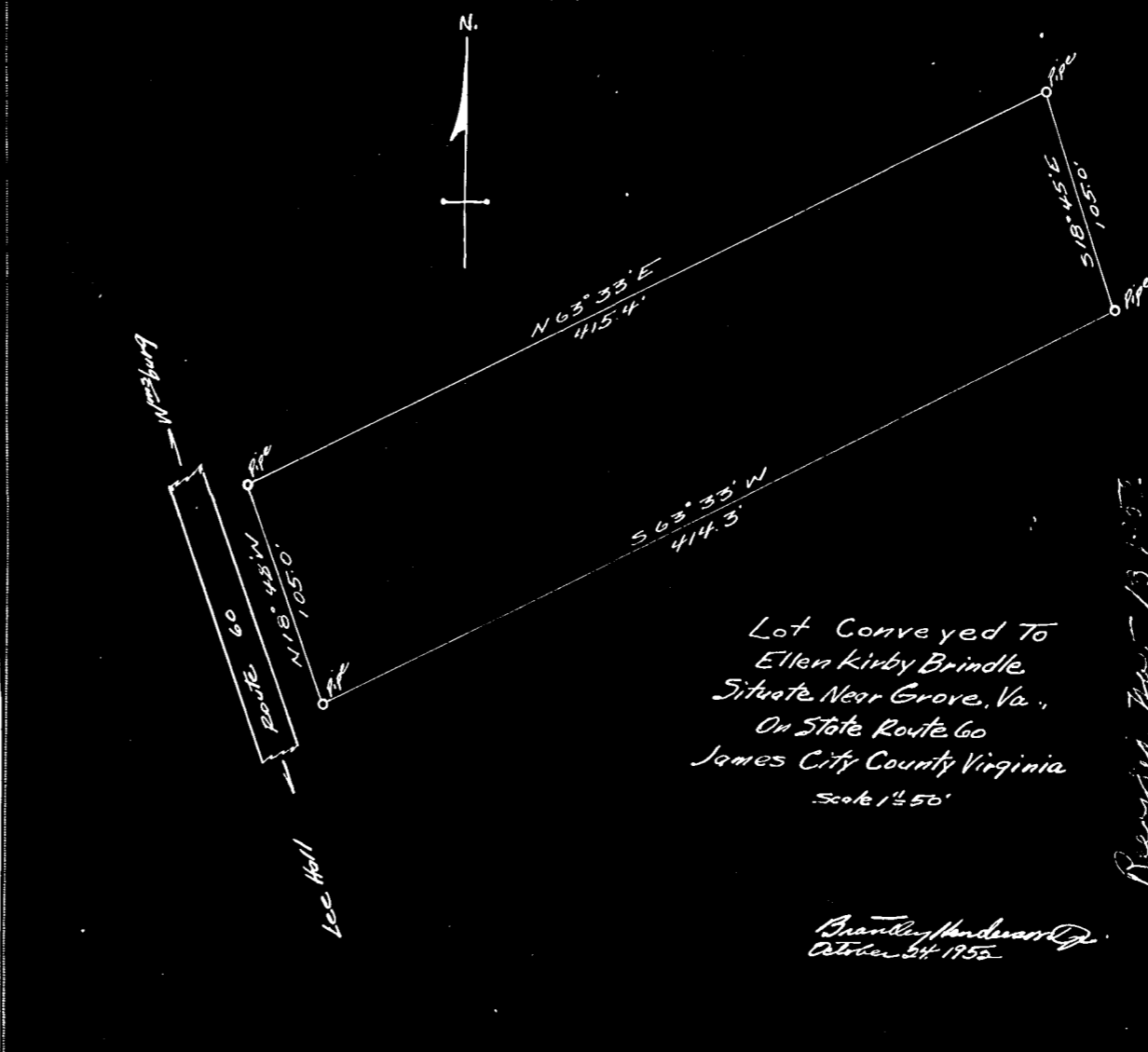


G. MAXWELL LANIER
 PLAT SHOWING SURVEY OF COMMERCIAL
 BLOCK AT "CASEY'S CORNER" JAMES
 CITY COUNTY VIRGINIA
 FEBRUARY 5, 1952 SCALE 1" = 30'



W. & M. MANNING
 SURVEYING & MAPPING
 WILLIAMSBURG, VIRGINIA