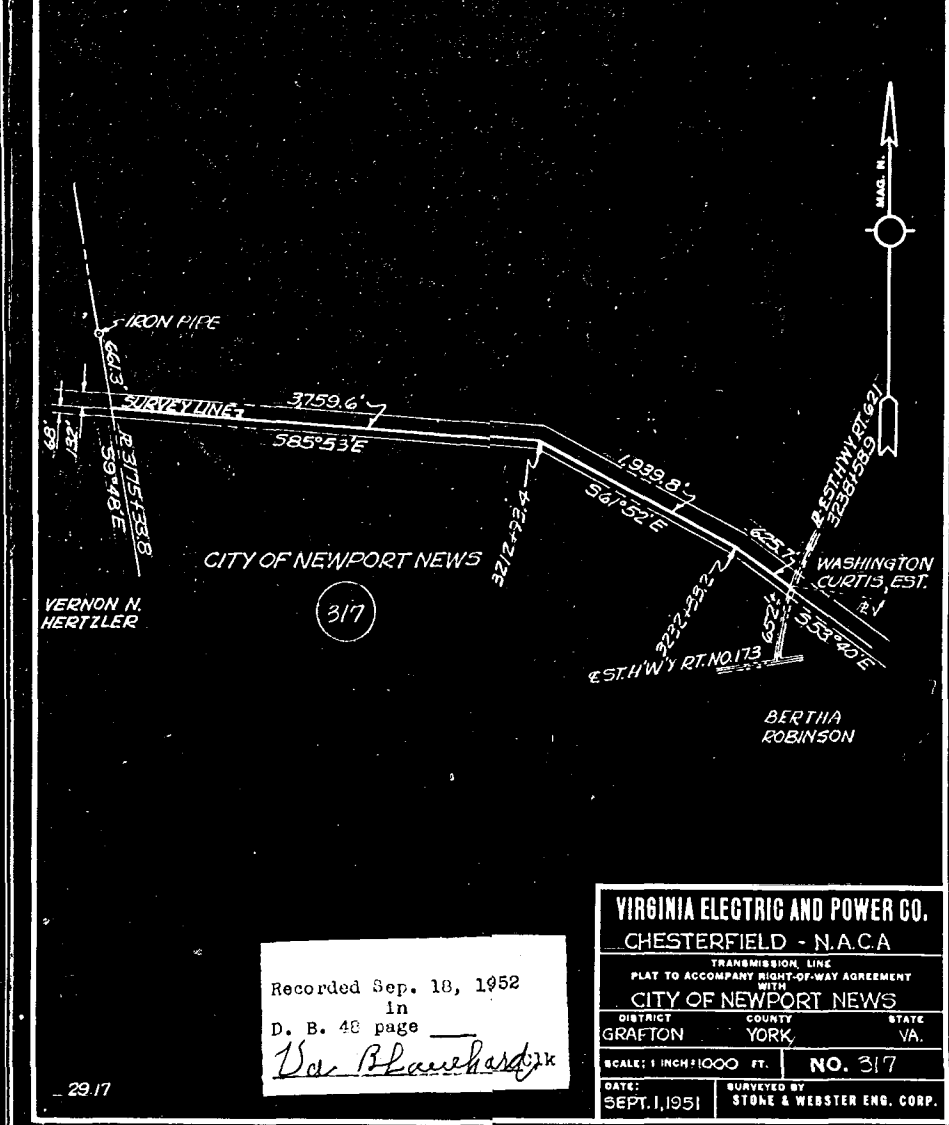


DETAIL "A"
SCALE 1"=200'

A 5.0
B 7.6
C 9.7
D 7.4
E 7.2
F 7.0
G 7.2
H 7.0
I 5.4
K 5.1

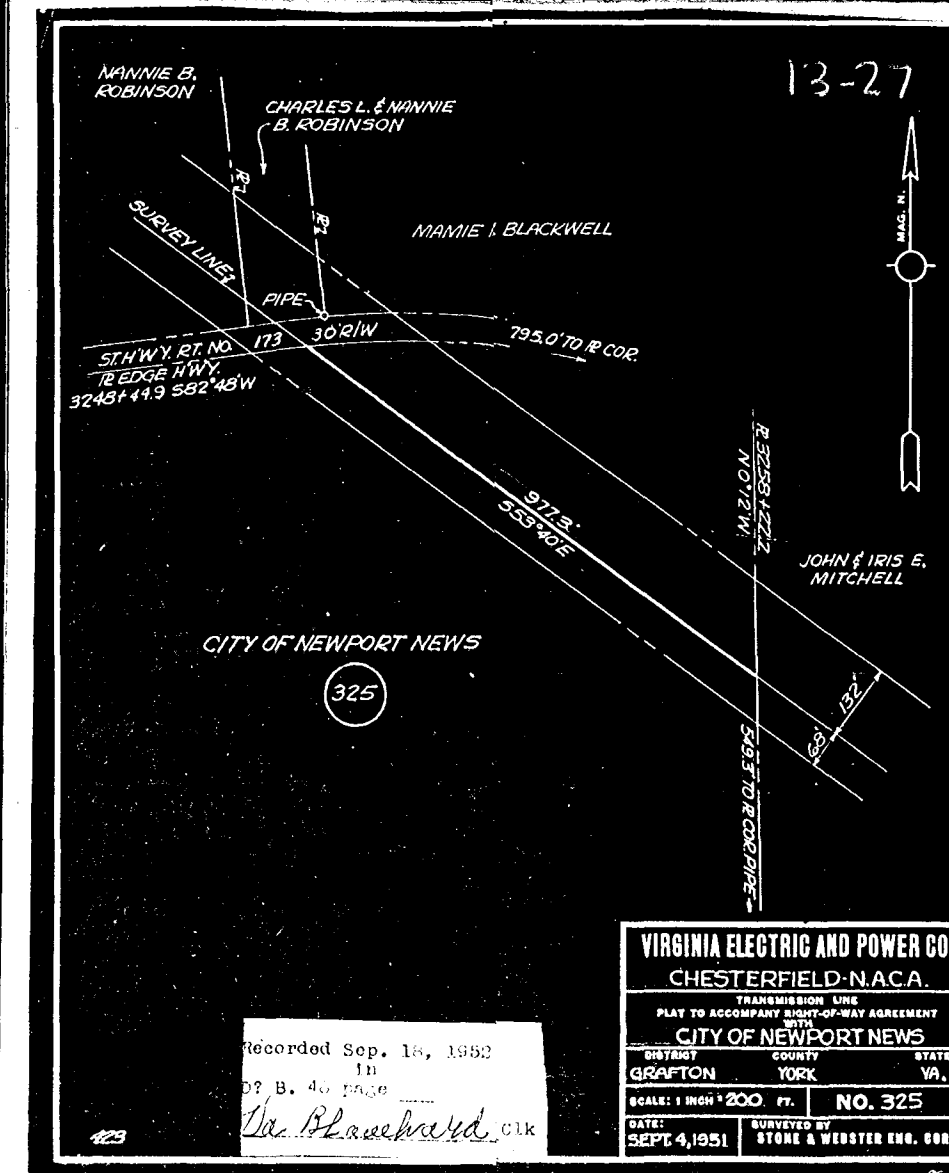
Recorded Sep. 18, 1952
in
D. B. 48 page
Dr. Blanchard

VIRGINIA ELECTRIC AND POWER CO. CHESTERFIELD - N.A.C.A.	
TRANSMISSION LINE PLAT TO ACCOMPANY RIGHT-OF-WAY AGREEMENT	
CITY OF NEWPORT NEWS	
DISTRICT DENBIGH	COUNTY WARWICK
STATE VA.	NO. 311
SCALE: 1 INCH = 1000 FT.	SURVEYED BY STONE & WEBSTER ENG. CORP.
DATE: JAN. 29, 1952	



Recorded Sep. 18, 1952
in
D. B. 48 page
Dr. Blanchard

VIRGINIA ELECTRIC AND POWER CO. CHESTERFIELD - N.A.C.A.	
TRANSMISSION LINE PLAT TO ACCOMPANY RIGHT-OF-WAY AGREEMENT	
CITY OF NEWPORT NEWS	
DISTRICT GRAFTON	COUNTY YORK
STATE VA.	NO. 317
SCALE: 1 INCH = 1000 FT.	SURVEYED BY STONE & WEBSTER ENG. CORP.
DATE: SEPT. 1, 1951	



Recorded Sep. 18, 1952
in
D. B. 48 page
Dr. Blanchard

VIRGINIA ELECTRIC AND POWER CO. CHESTERFIELD - N.A.C.A.	
TRANSMISSION LINE PLAT TO ACCOMPANY RIGHT-OF-WAY AGREEMENT	
CITY OF NEWPORT NEWS	
DISTRICT GRAFTON	COUNTY YORK
STATE VA.	NO. 325
SCALE: 1 INCH = 200 FT.	SURVEYED BY STONE & WEBSTER ENG. CORP.
DATE: SEPT. 4, 1951	

