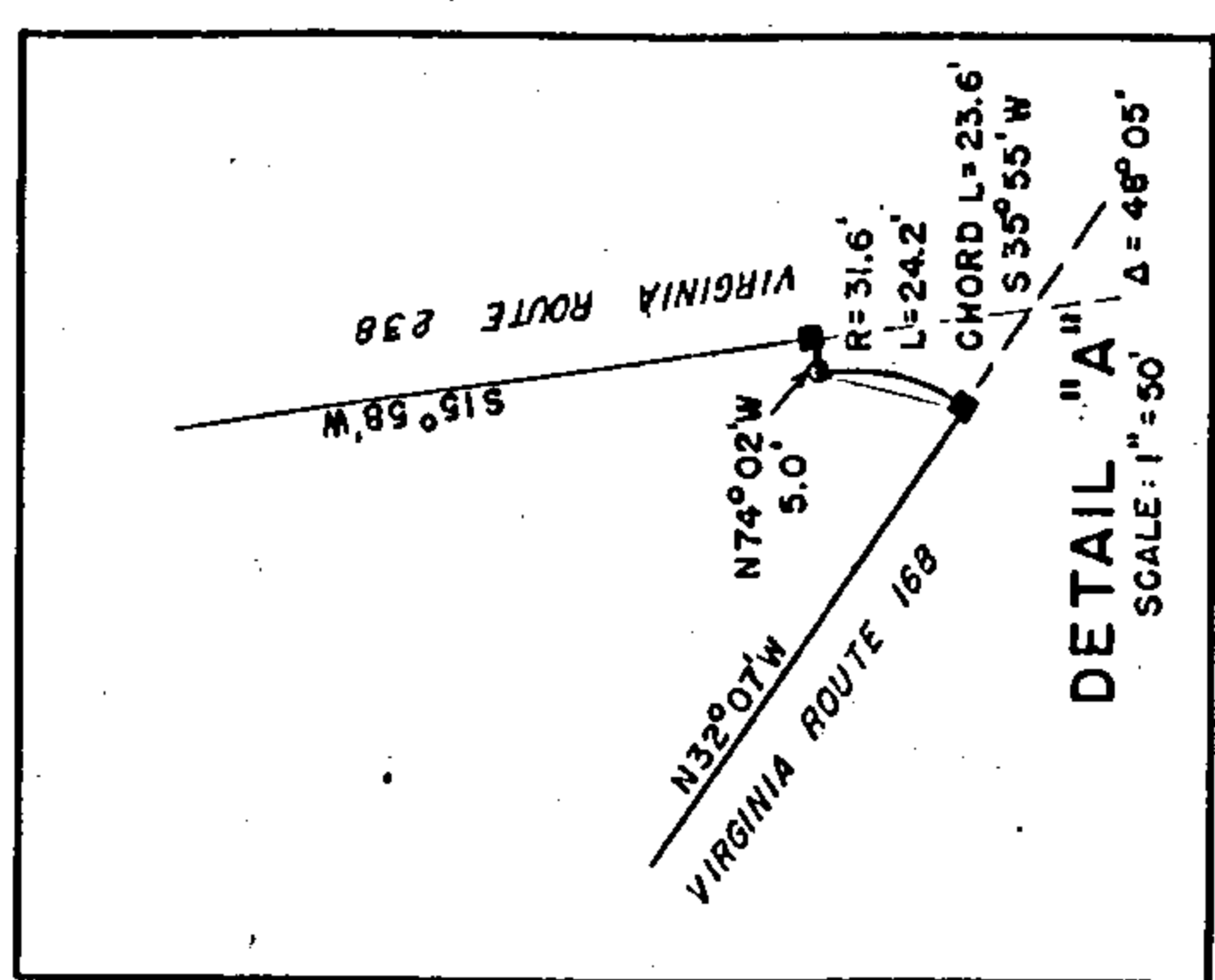
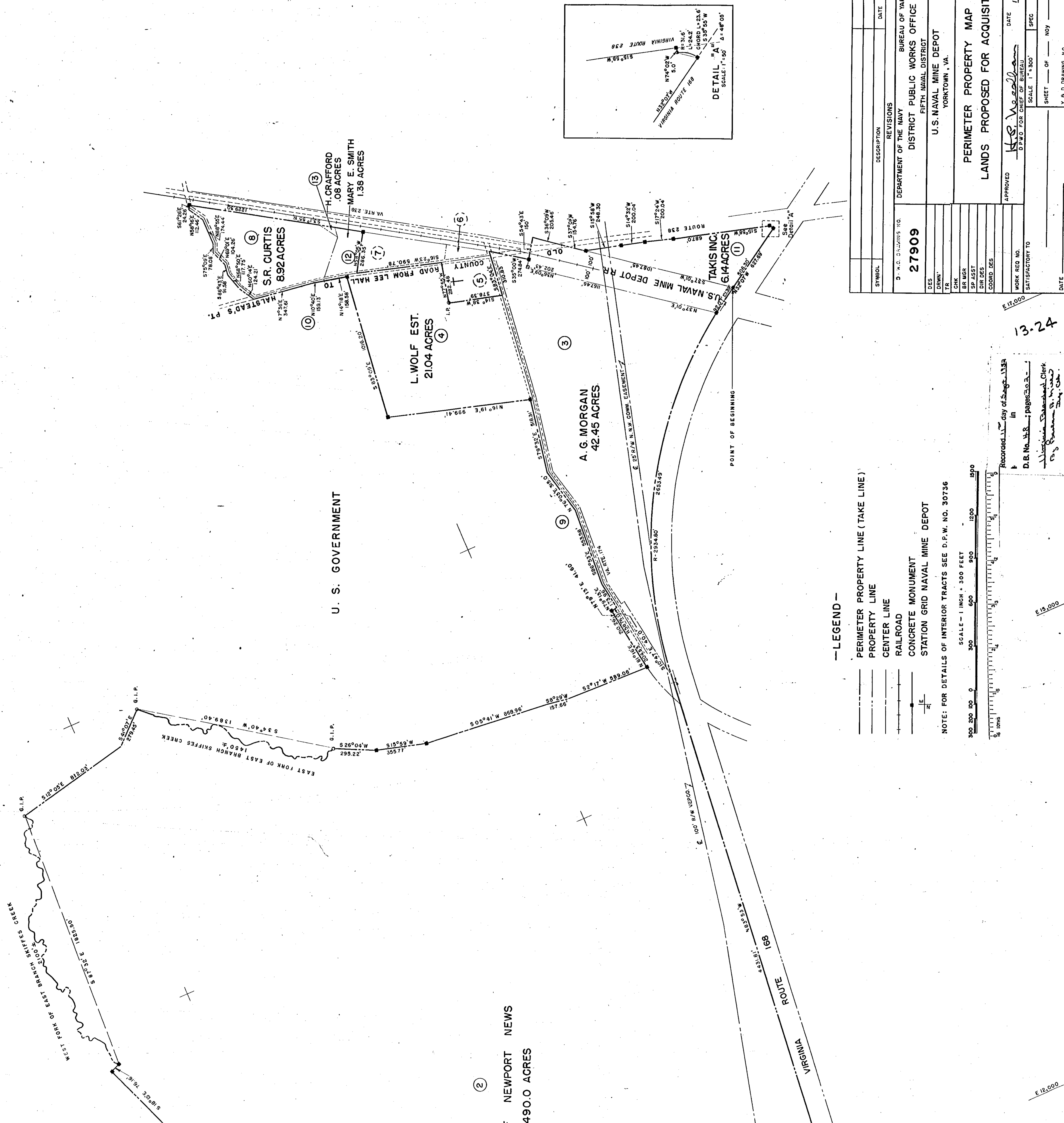


E 15,000

E 17,000



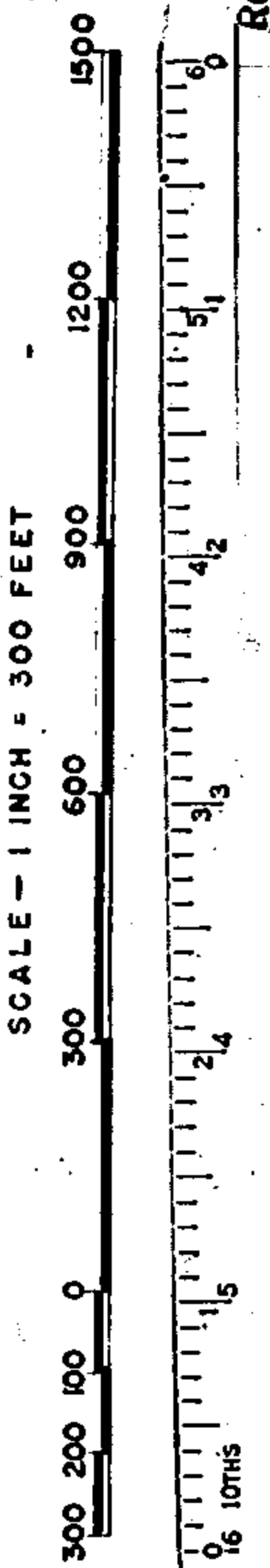
13-24

Recorded 11th day of Sept. 1953
 in
 D. B. No. 1188 - pages 303-3
 Virginia Returned Clerk
 13 Bureau Building
 Richmond, Va.

- LEGEND -

- PERIMETER PROPERTY LINE (TAKE LINE)
- PROPERTY LINE
- CENTER LINE
- RAILROAD
- CONCRETE MONUMENT
- STATION GRID NAVAL MINE DEPOT

NOTE: FOR DETAILS OF INTERIOR TRACTS SEE D.P.W. NO. 30736



E 12,000

SYMBOL	DESCRIPTION	REVISIONS	DATE	APPROVAL
DEPARTMENT OF THE NAVY				
DISTRICT PUBLIC WORKS OFFICE				
FIFTH NAVAL DISTRICT				
U. S. NAVAL MINE DEPOT				
YORKTOWN, VA.				
PERIMETER PROPERTY MAP				
LANDS PROPOSED FOR ACQUISITION				
D. P. W. DRAWING NO. 27909				
DES	BUREAU OF YARDS & DOCKS			
DRWN	DISTRICT PUBLIC WORKS OFFICE			
TR	FIFTH NAVAL DISTRICT			
CHK	U. S. NAVAL MINE DEPOT			
BR MGR	YORKTOWN, VA.			
SP ASST				
DIR DES				
COORD DES				
APPROVED	H. S. Woodman			DATE 14 MAR. 1952
WORK REQ NO.	D.P.W. FOR CHIEF OF BUREAU			
SATISFACTORY TO	SCALE 1" = 300'			
	SHEET 1 OF 1			NOY
	DATE			
	V. B. D. DRAWING NO.			

(2)
 F NEWPORT NEWS
 490.0 ACRES

U. S. GOVERNMENT

S. R. CURTIS
 892 ACRES

L. WOLF EST.
 2104 ACRES

A. G. MORGAN
 42.45 ACRES

TAKIS INC.
 6.4 ACRES

(13) H. CRAFFORD
 .08 ACRES
 (12) MARY E. SMITH
 1.38 ACRES

POINT OF BEGINNING

ROUTE 189
 VIRGINIA

ROUTE 238
 VIRGINIA

ROAD FROM LEE HALL
 COUNTY

U.S. NAVAL MINE DEPOT RR

EAST FORK OF EAST BRANCH SKIFFES CREEK

WEST FORK OF EAST BRANCH SKIFFES CREEK

SARGE TAIL