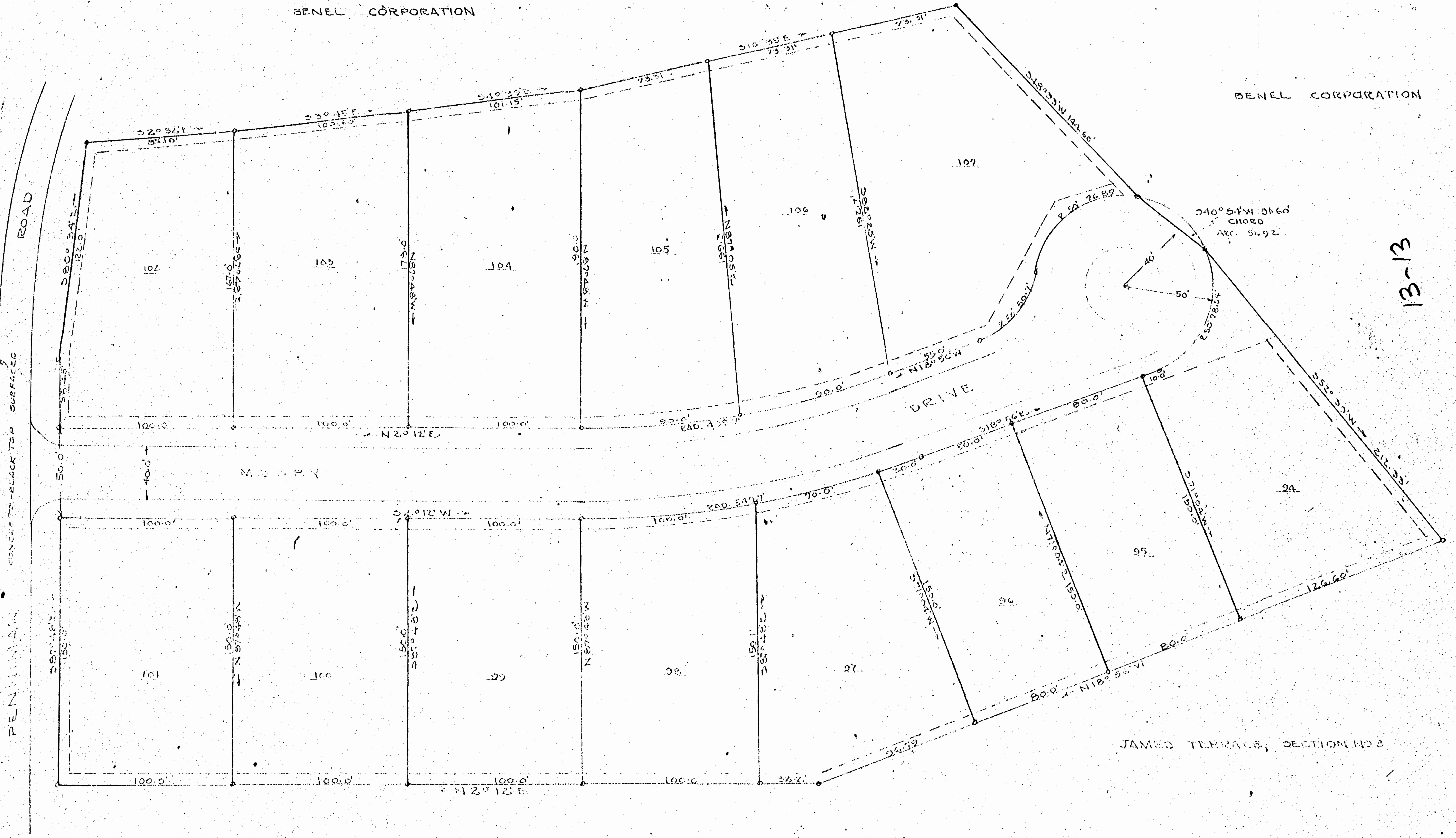


BENEL CORPORATION

BENEL CORPORATION



13-13

JAMES TERRACE, SECTION NO. 3

JAMES TERRACE, SECTION NO. 3

JAMES TERRACE, SUBDIVISION

BENEL CORPORATION OWNER

JAMES CITY COUNTY VA.

PLAT SHOWING SURVEY OF BUILDING

SITES SECTION NO. 1

NOVEMBER 16 1951

SCALE: 1" = 40'

REVISED JUNE 25 1952

Recorded April 30, 1952

in

D. B. 47 page 297-8

*Va Blanchard* Clerk

ALL CORNERS MARKED WITH IRON PIPES

NOTE: GENERAL UTILITY EASEMENTS ALONG FRONT & REAR OF PLOTS & PERIMETER AS SHOWN