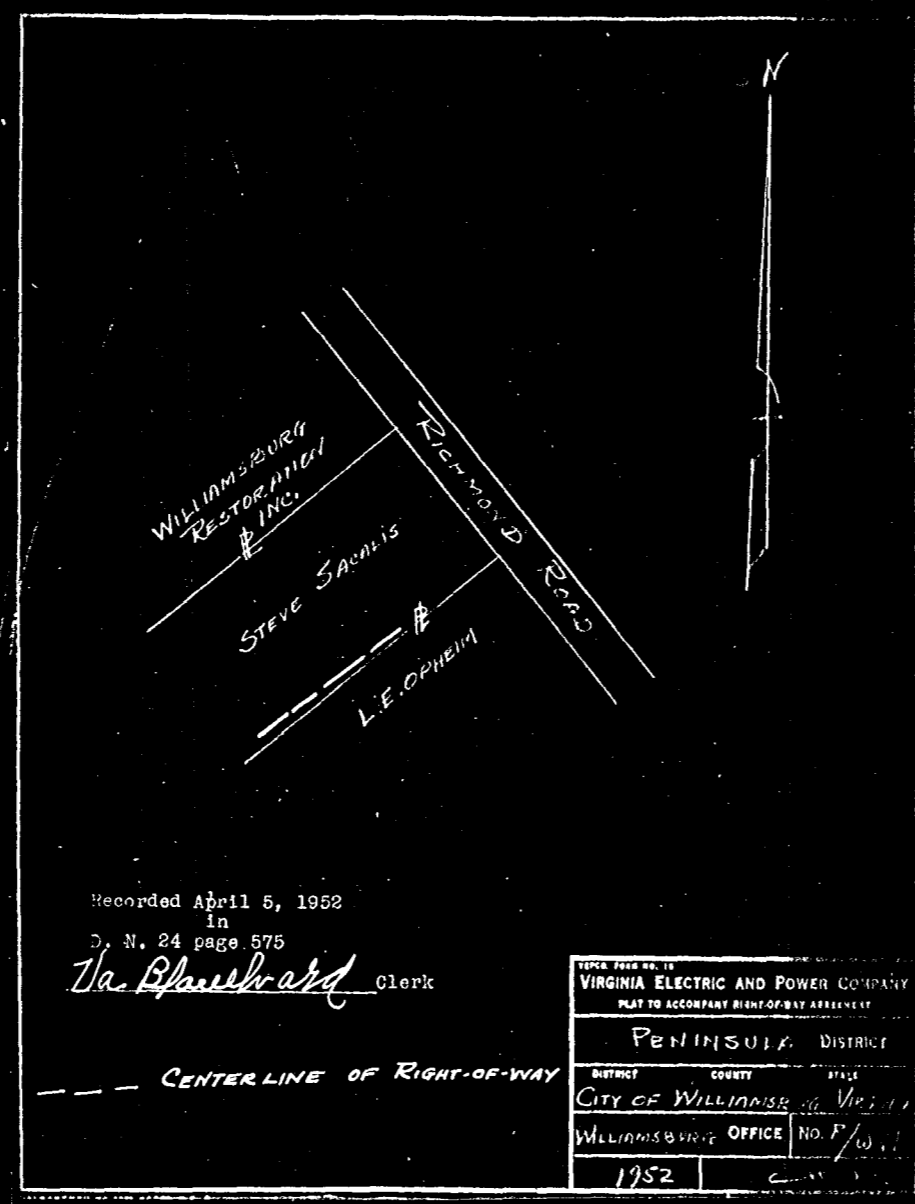


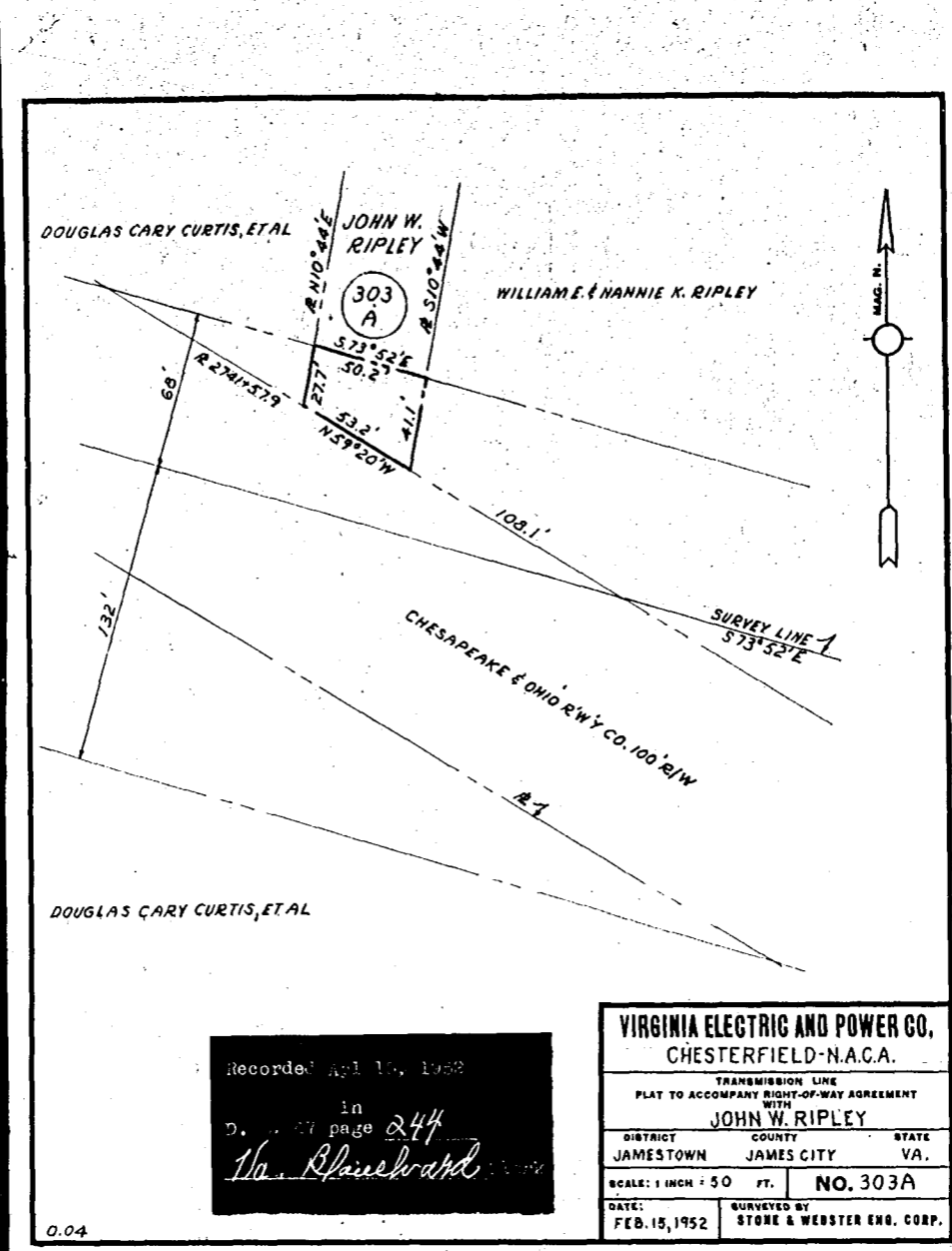
Recorded April 2, 1952
in
D. B. 47 page 169
Th. Blanchard Clerk

VIRGINIA ELECTRIC AND POWER CO.
CHESTERFIELD - N.A.C.A.
TRANSMISSION LINE
PLAT TO ACCOMPANY RIGHT-OF-WAY AGREEMENT
WITH
W.P. HICKS, EST.
DISTRICT COUNTY STATE
PENINSULA POWHATAN JAMES CITY VA.
SCALE: 1 INCH = 200 FT. NO. 160
DATE: JULY 5, 1951 SURVEYED BY: STONE & WEBSTER ENG. CORP.



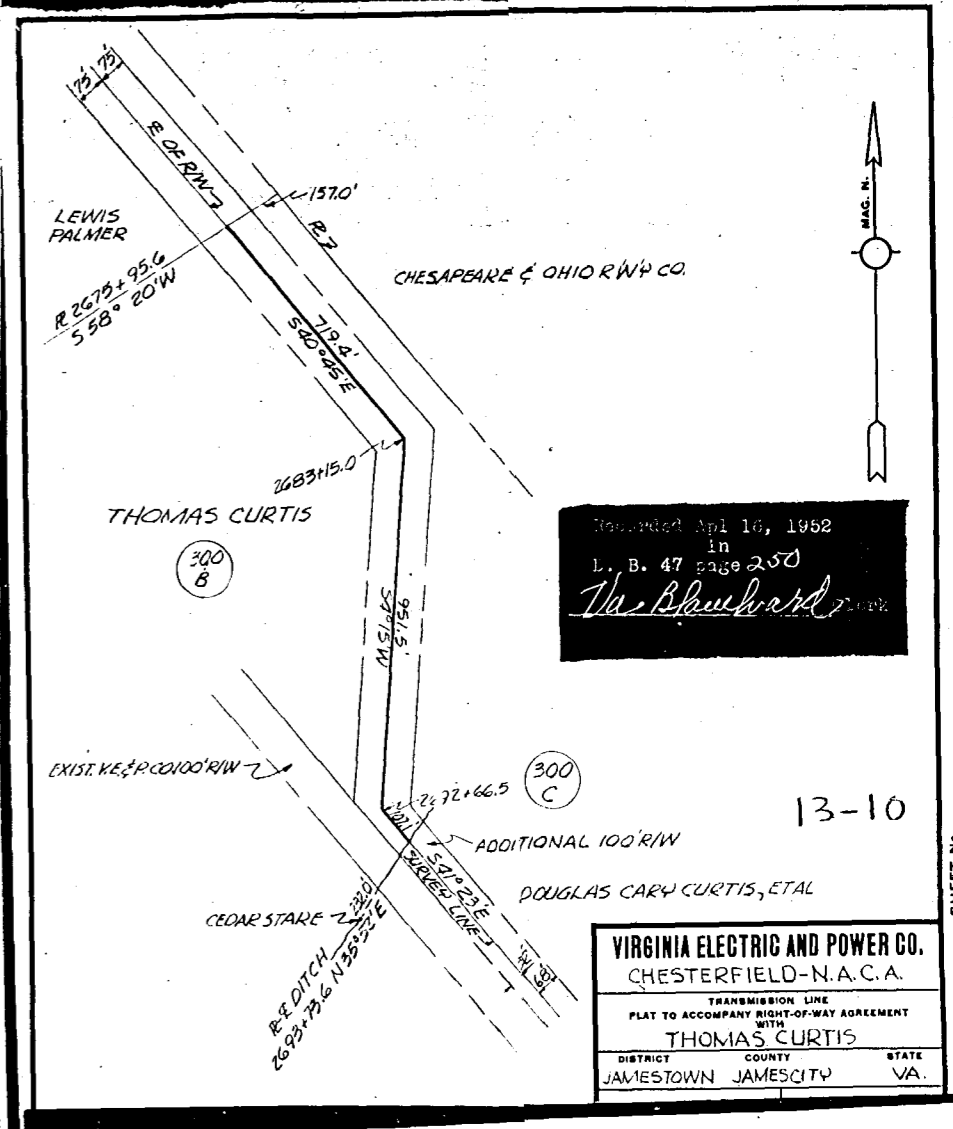
Recorded April 5, 1952
in
D. N. 24 page 575
Th. Blanchard Clerk

FORM NO. 13
VIRGINIA ELECTRIC AND POWER COMPANY
PLAT TO ACCOMPANY RIGHT-OF-WAY AGREEMENT
WITH
W.P. HICKS, EST.
DISTRICT COUNTY STATE
PENINSULA POWHATAN JAMES CITY VA.
SCALE: 1 INCH = 200 FT. NO. 160
DATE: JULY 5, 1951 SURVEYED BY: STONE & WEBSTER ENG. CORP.



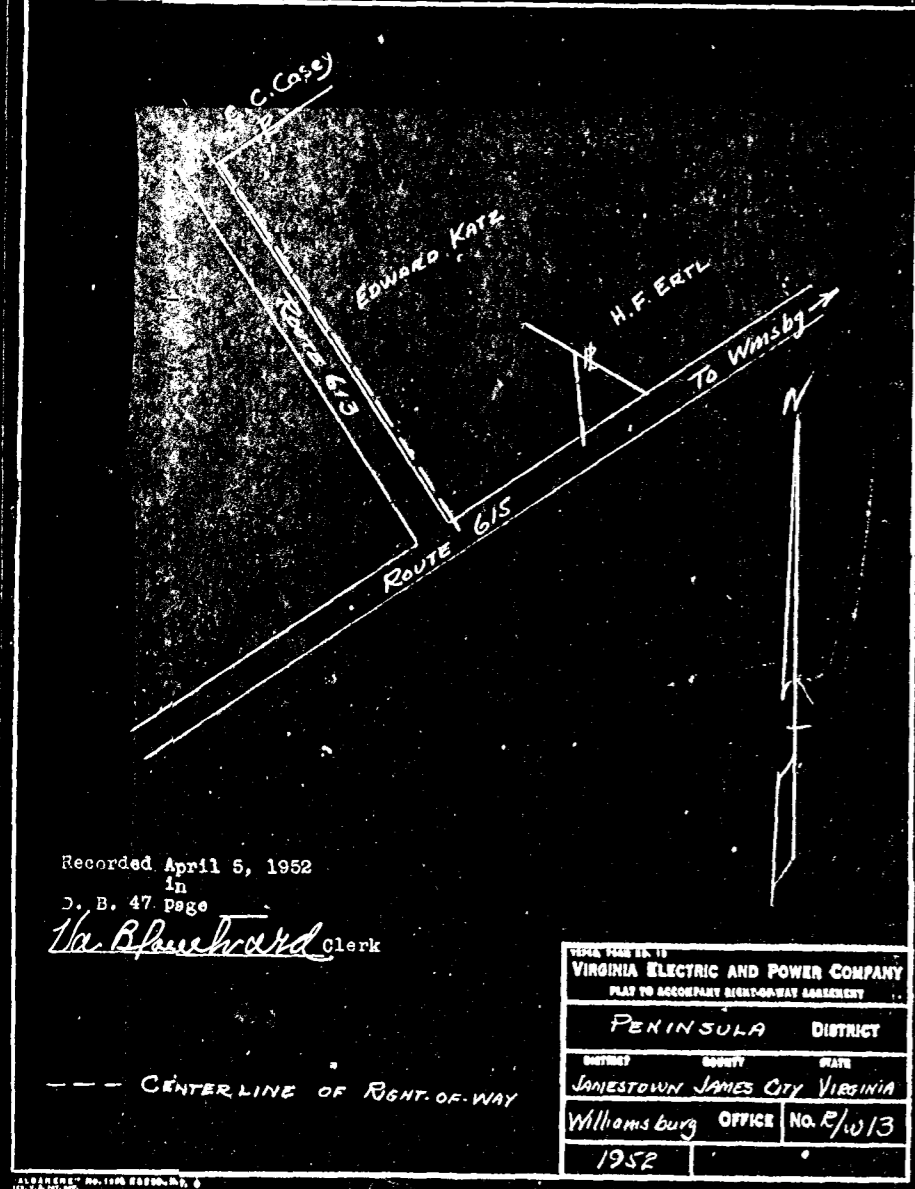
Recorded April 10, 1952
in
D. B. 47 page 244
Th. Blanchard Clerk

VIRGINIA ELECTRIC AND POWER CO.
CHESTERFIELD - N.A.C.A.
TRANSMISSION LINE
PLAT TO ACCOMPANY RIGHT-OF-WAY AGREEMENT
WITH
JOHN W. RIPLEY
DISTRICT COUNTY STATE
JAMESTOWN JAMES CITY VA.
SCALE: 1 INCH = 50 FT. NO. 303A
DATE: FEB. 15, 1952 SURVEYED BY: STONE & WEBSTER ENG. CORP.



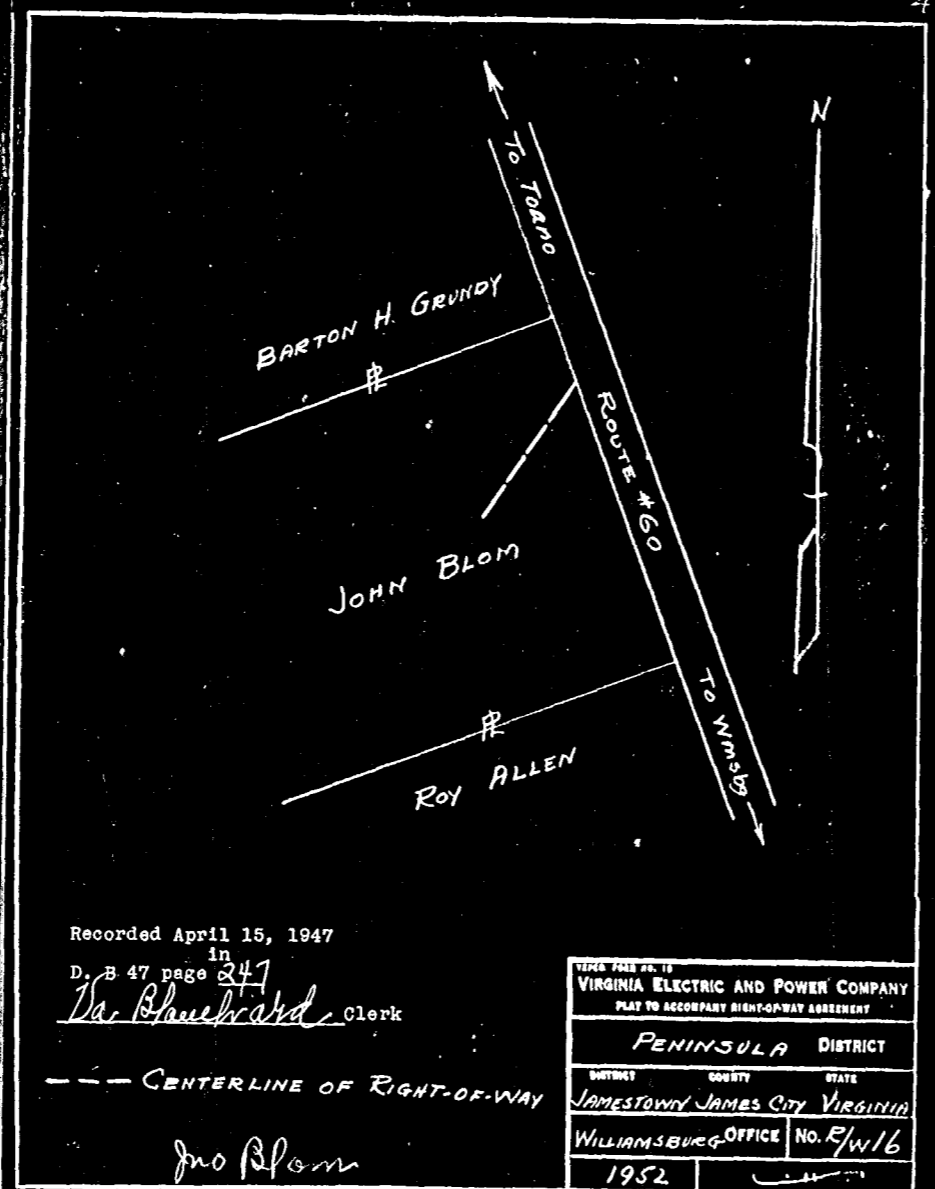
Recorded April 16, 1952
in
L. B. 47 page 250
Th. Blanchard Clerk

VIRGINIA ELECTRIC AND POWER CO.
CHESTERFIELD - N.A.C.A.
TRANSMISSION LINE
PLAT TO ACCOMPANY RIGHT-OF-WAY AGREEMENT
WITH
THOMAS CURTIS
DISTRICT COUNTY STATE
JAMESTOWN JAMES CITY VA.



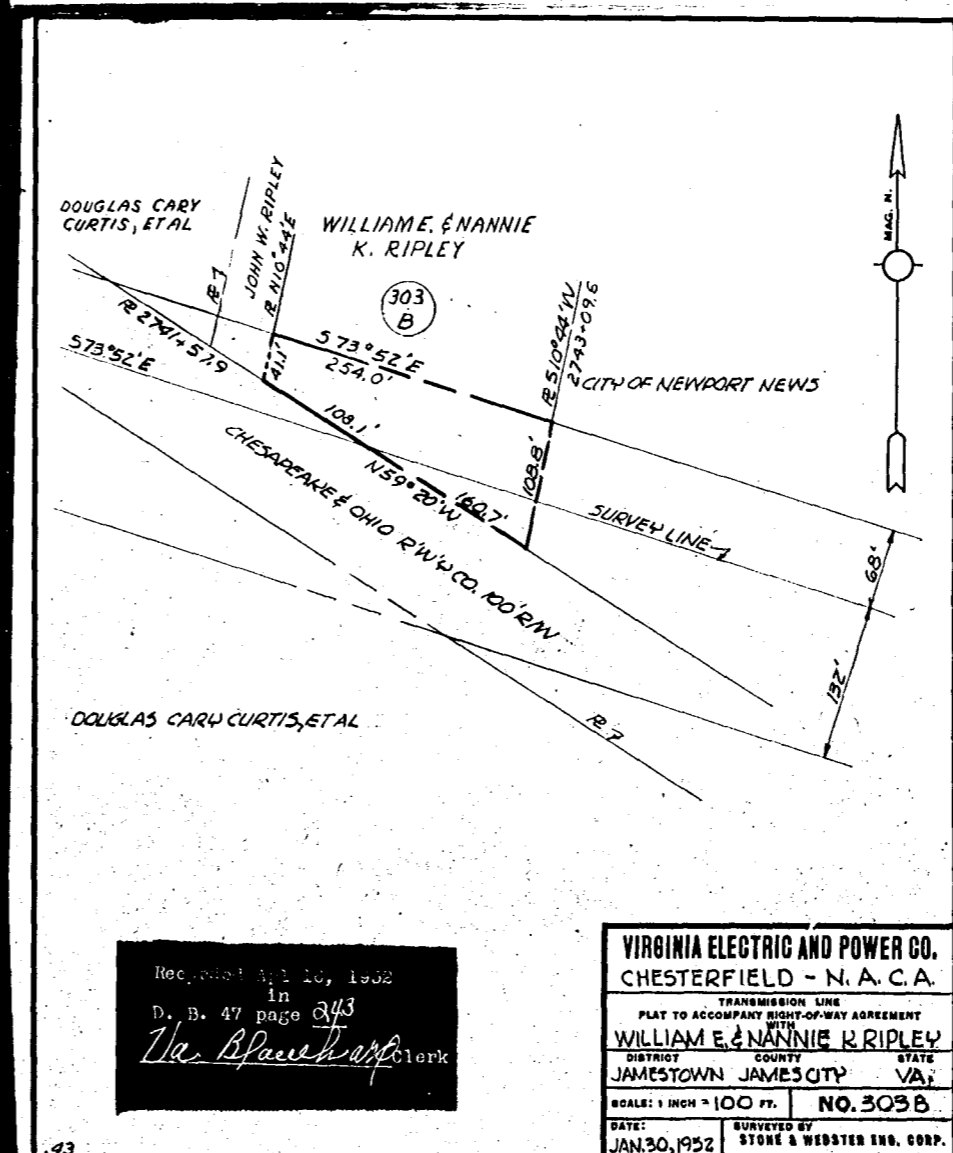
Recorded April 5, 1952
in
D. B. 47 page
Th. Blanchard Clerk

VIRGINIA ELECTRIC AND POWER COMPANY
PLAT TO ACCOMPANY RIGHT-OF-WAY AGREEMENT
WITH
W.P. HICKS, EST.
DISTRICT COUNTY STATE
PENINSULA POWHATAN JAMES CITY VA.
SCALE: 1 INCH = 200 FT. NO. 160
DATE: JULY 5, 1951 SURVEYED BY: STONE & WEBSTER ENG. CORP.



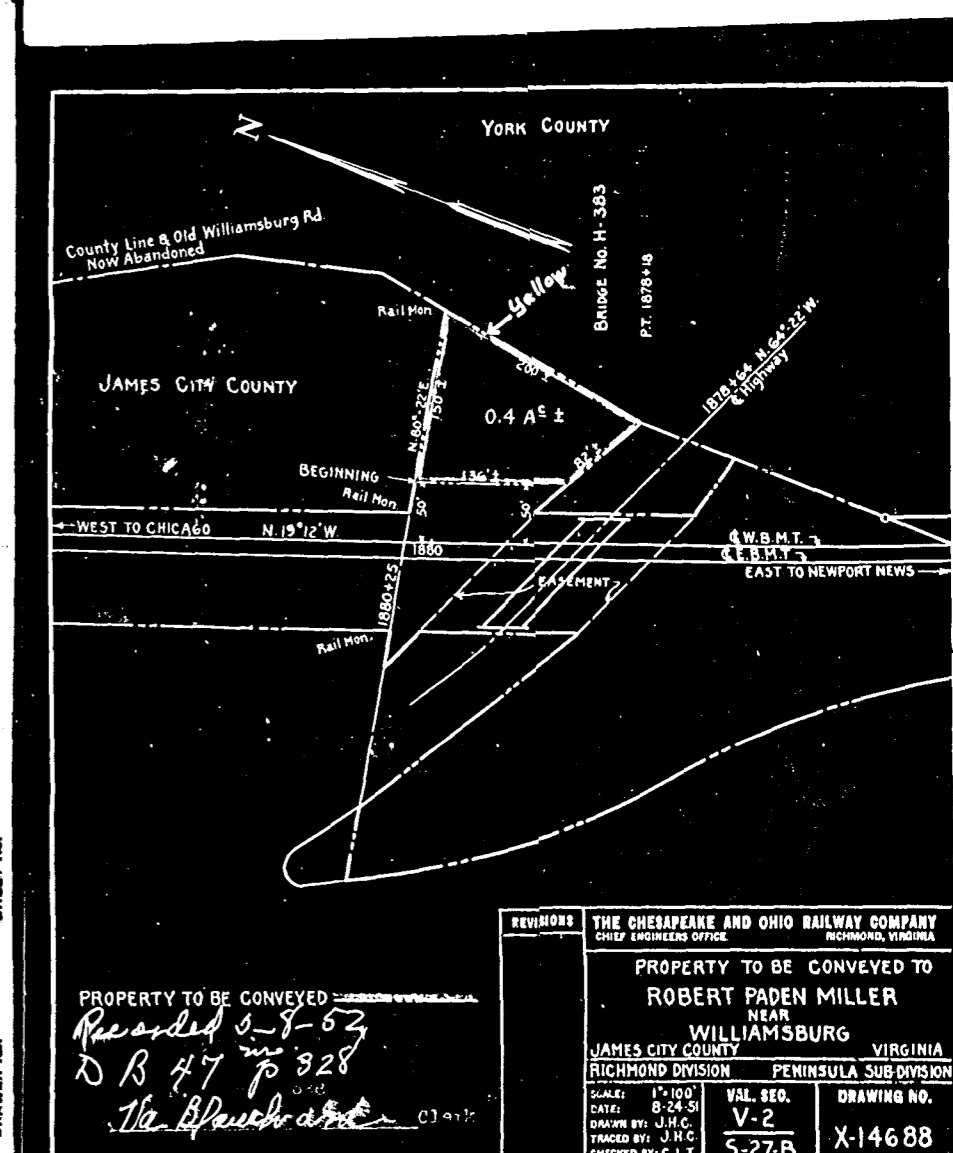
Recorded April 15, 1947
in
D. B. 47 page 247
Th. Blanchard Clerk

FORM NO. 13
VIRGINIA ELECTRIC AND POWER COMPANY
PLAT TO ACCOMPANY RIGHT-OF-WAY AGREEMENT
WITH
W.P. HICKS, EST.
DISTRICT COUNTY STATE
PENINSULA POWHATAN JAMES CITY VA.
SCALE: 1 INCH = 200 FT. NO. 160
DATE: JULY 5, 1951 SURVEYED BY: STONE & WEBSTER ENG. CORP.



Recorded April 10, 1952
in
D. B. 47 page 243
Th. Blanchard Clerk

VIRGINIA ELECTRIC AND POWER CO.
CHESTERFIELD - N.A.C.A.
TRANSMISSION LINE
PLAT TO ACCOMPANY RIGHT-OF-WAY AGREEMENT
WITH
WILLIAM E. & NANNIE K. RIPLEY
DISTRICT COUNTY STATE
JAMESTOWN JAMES CITY VA.
SCALE: 1 INCH = 100 FT. NO. 303B
DATE: JAN. 30, 1952 SURVEYED BY: STONE & WEBSTER ENG. CORP.



REVISOR: THE CHESAPEAKE AND OHIO RAILWAY COMPANY
CHIEF ENGINEERS OFFICE RICHMOND, VIRGINIA

PROPERTY TO BE CONVEYED TO
ROBERT PADEN MILLER
NEAR
WILLIAMSBURG
JAMES CITY COUNTY VIRGINIA
RICHMOND DIVISION PENINSULA SUB DIVISION

SCALE: 1 INCH = 100 FT.
DATE: 8-24-51
DRAWN BY: J.H.C.
CHECKED BY: C.L.T.

VAL. SEC. DRAWING NO.
V-2 X-14688
5-27B

PROPERTY TO BE CONVEYED
Recorded 5-8-52
D B 47 p 328
Th. Blanchard Clerk