

VIRGINIA ELECTRIC AND POWER CO.
CHESTERFIELD-N.A.C.A.

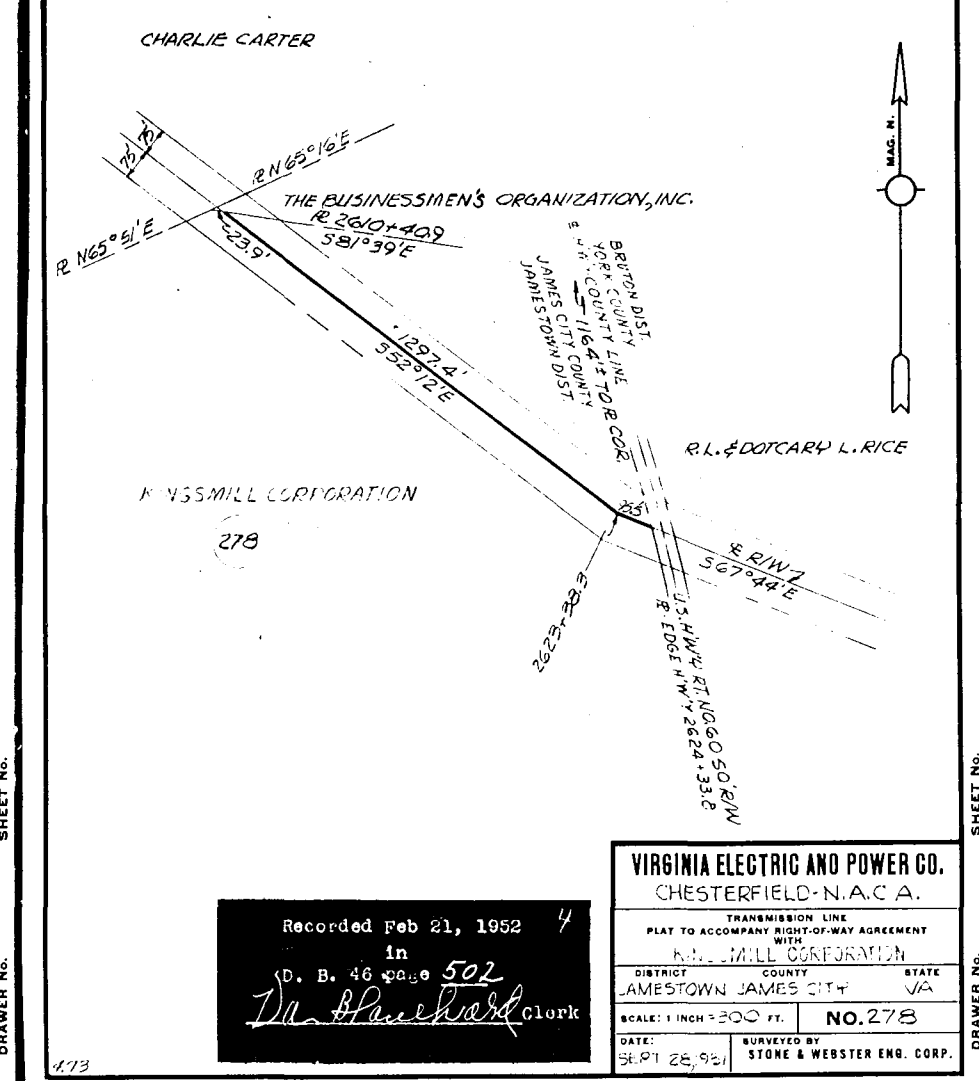
TRANSMISSION LINE
PLAT TO ACCOMPANY RIGHT-OF-WAY AGREEMENT
WITH
CHARLIE CARTER

DISTRICT COUNTY STATE
JAMESTOWN JAMES CITY VA.

SCALE: 1 INCH = 100 FT. **NO. 276**

DATE: SEPT. 27, 1951 SURVEYED BY
STONE & WEBSTER ENG. CORP.

Recorded Feb 21, 1952
in
D. B. 46 page 494
The Blanchard Clerk



VIRGINIA ELECTRIC AND POWER CO.
CHESTERFIELD-N.A.C.A.

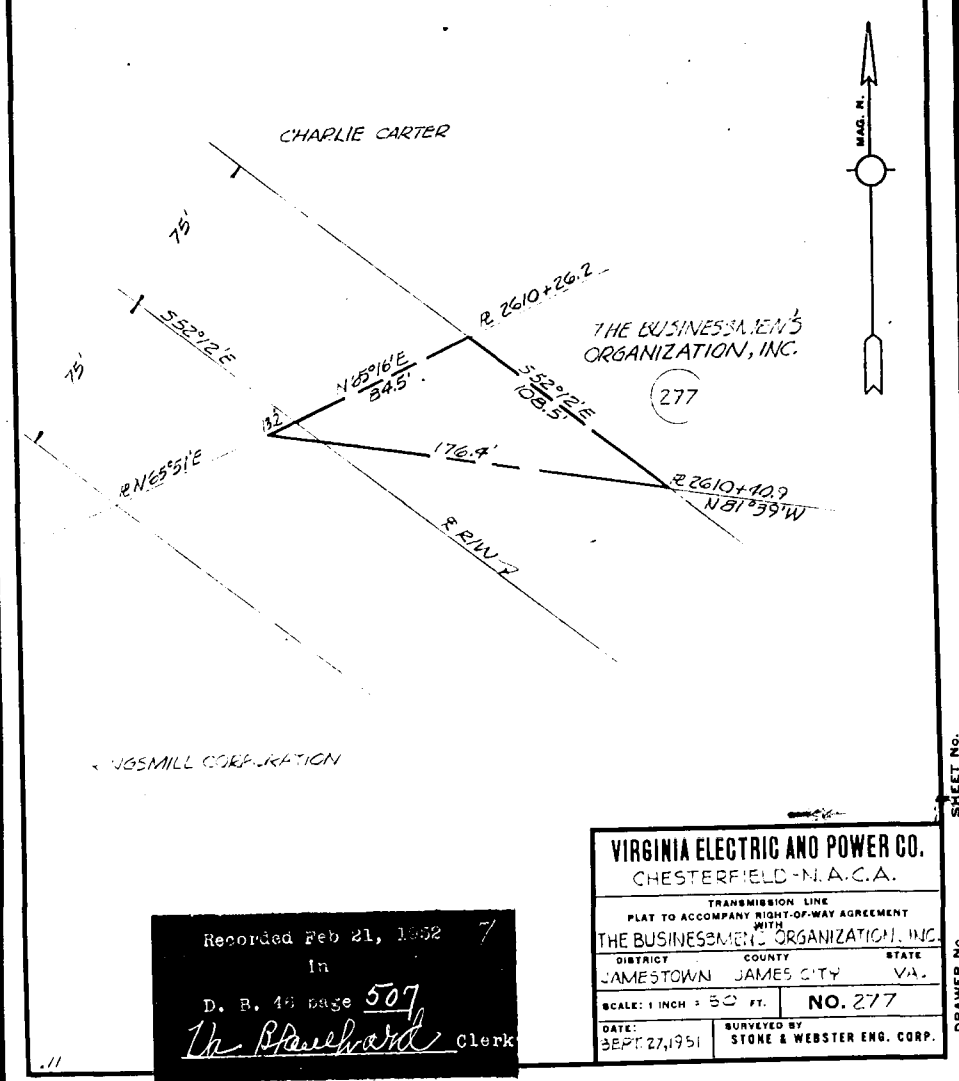
TRANSMISSION LINE
PLAT TO ACCOMPANY RIGHT-OF-WAY AGREEMENT
WITH
KINGSMILL CORPORATION

DISTRICT COUNTY STATE
JAMESTOWN JAMES CITY VA.

SCALE: 1 INCH = 200 FT. **NO. 278**

DATE: SEPT. 28, 1951 SURVEYED BY
STONE & WEBSTER ENG. CORP.

Recorded Feb 21, 1952
in
D. B. 46 page 502
The Blanchard Clerk



VIRGINIA ELECTRIC AND POWER CO.
CHESTERFIELD-N.A.C.A.

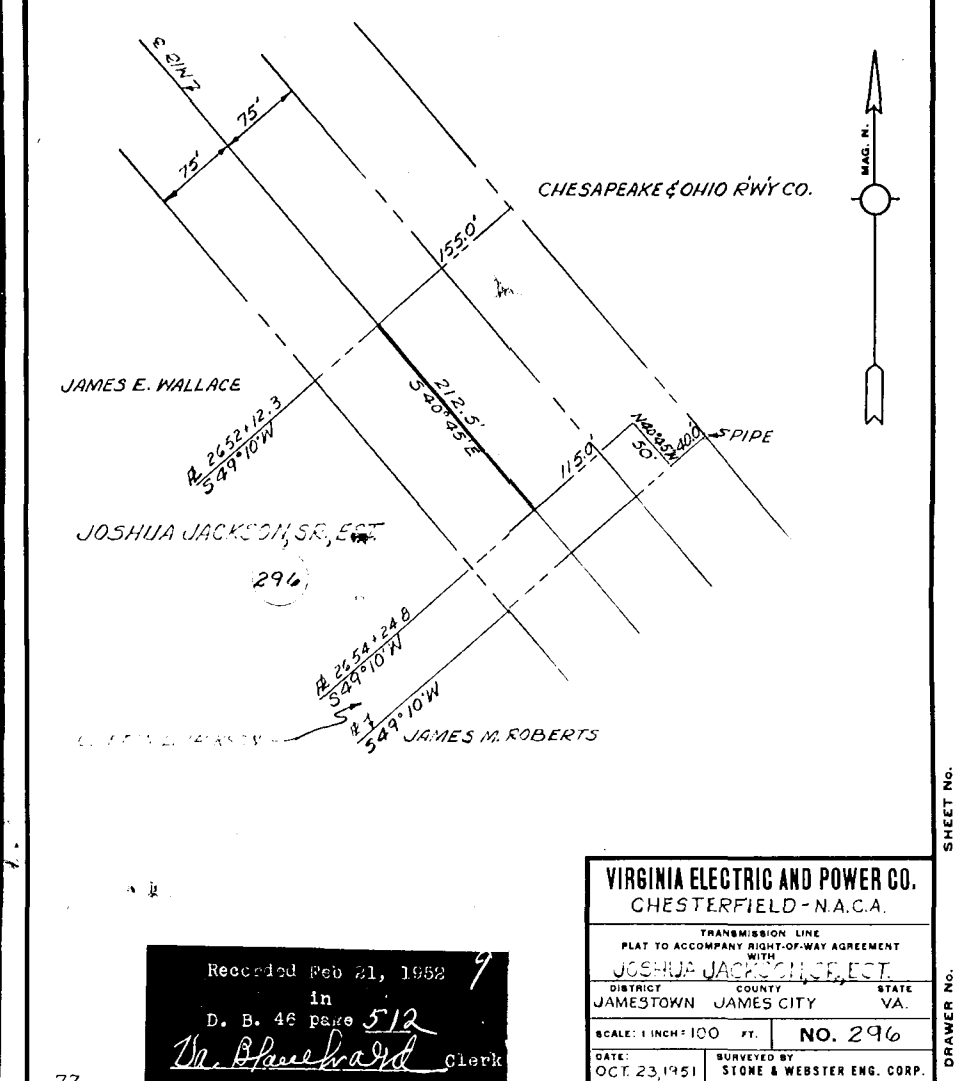
TRANSMISSION LINE
PLAT TO ACCOMPANY RIGHT-OF-WAY AGREEMENT
WITH
THE BUSINESSMEN'S ORGANIZATION, INC.

DISTRICT COUNTY STATE
JAMESTOWN JAMES CITY VA.

SCALE: 1 INCH = 50 FT. **NO. 277**

DATE: SEPT. 27, 1951 SURVEYED BY
STONE & WEBSTER ENG. CORP.

Recorded Feb 21, 1952
in
D. B. 46 page 507
The Blanchard Clerk



VIRGINIA ELECTRIC AND POWER CO.
CHESTERFIELD-N.A.C.A.

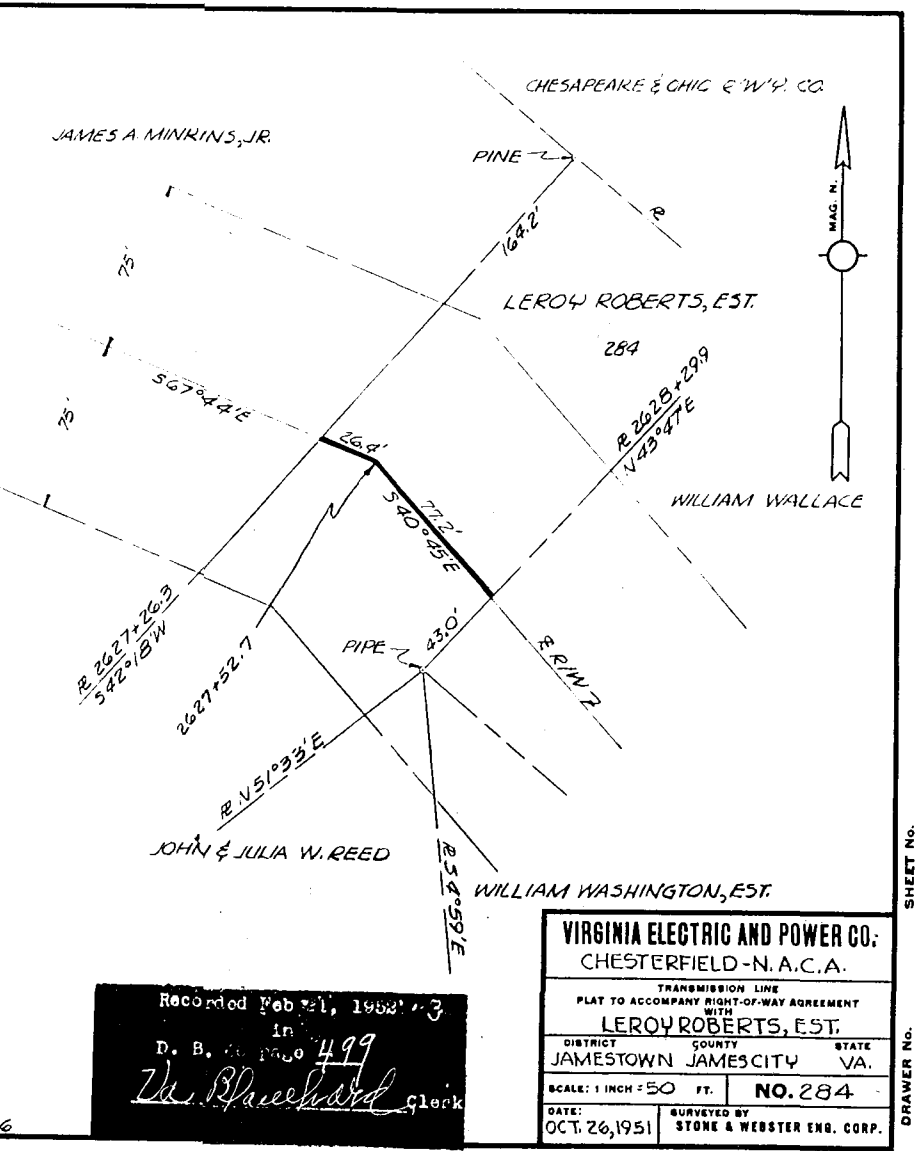
TRANSMISSION LINE
PLAT TO ACCOMPANY RIGHT-OF-WAY AGREEMENT
WITH
JOSHUA JACKSON, SR., EST.

DISTRICT COUNTY STATE
JAMESTOWN JAMES CITY VA.

SCALE: 1 INCH = 100 FT. **NO. 296**

DATE: OCT. 23, 1951 SURVEYED BY
STONE & WEBSTER ENG. CORP.

Recorded Feb 21, 1952
in
D. B. 46 page 512
The Blanchard Clerk



VIRGINIA ELECTRIC AND POWER CO.
CHESTERFIELD-N.A.C.A.

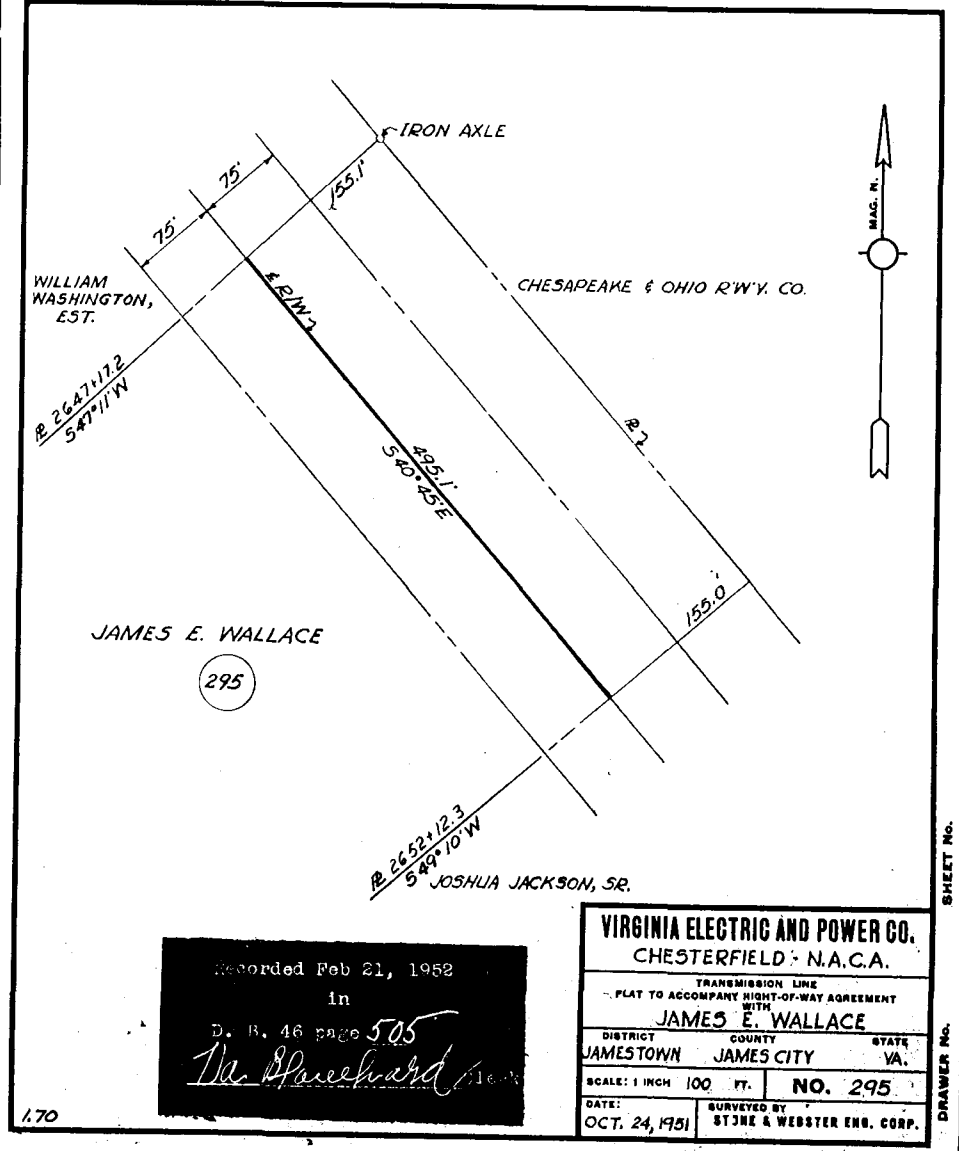
TRANSMISSION LINE
PLAT TO ACCOMPANY RIGHT-OF-WAY AGREEMENT
WITH
LEROY ROBERTS, EST.

DISTRICT COUNTY STATE
JAMESTOWN JAMES CITY VA.

SCALE: 1 INCH = 50 FT. **NO. 284**

DATE: OCT. 26, 1951 SURVEYED BY
STONE & WEBSTER ENG. CORP.

Recorded Feb 21, 1952
in
D. B. 46 page 499
The Blanchard Clerk



VIRGINIA ELECTRIC AND POWER CO.
CHESTERFIELD-N.A.C.A.

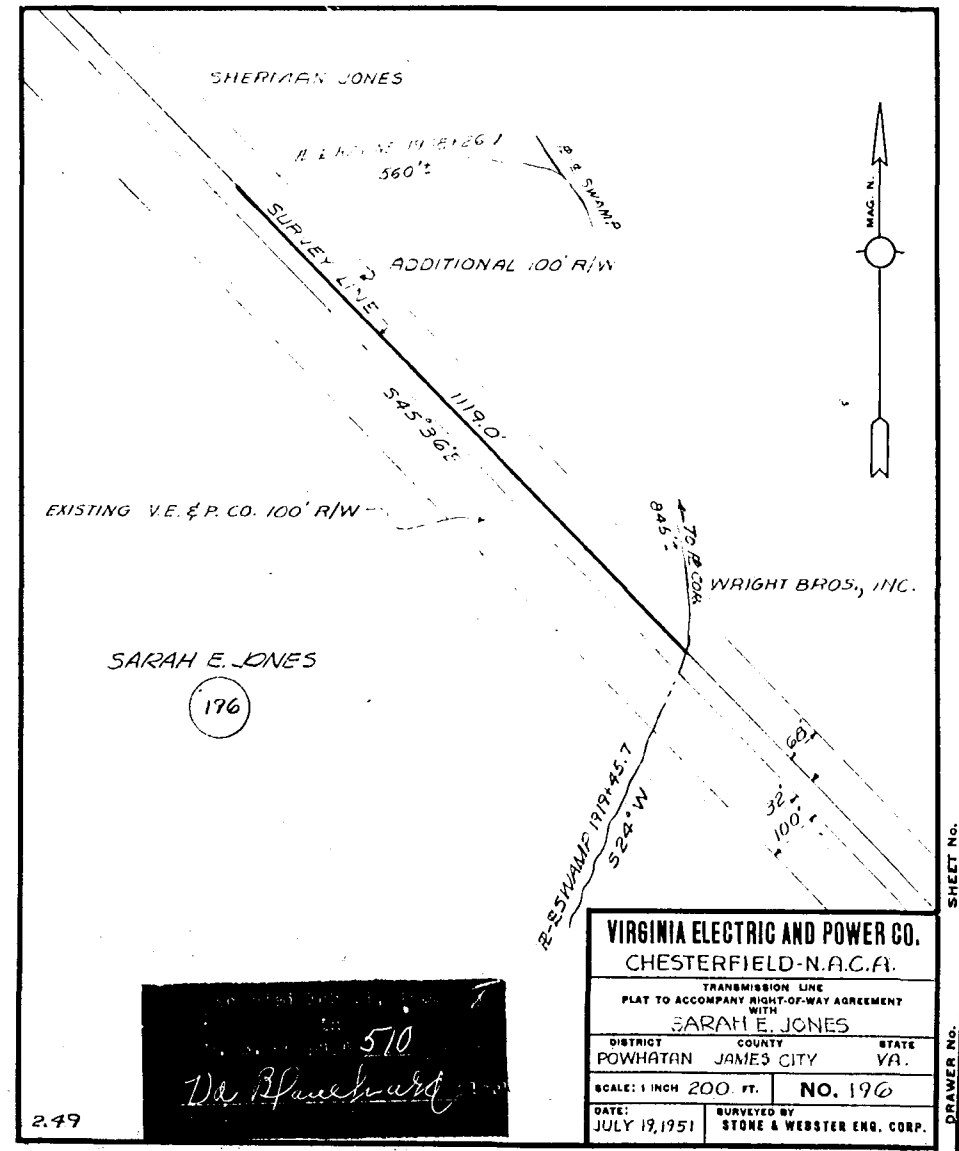
TRANSMISSION LINE
PLAT TO ACCOMPANY RIGHT-OF-WAY AGREEMENT
WITH
JAMES E. WALLACE

DISTRICT COUNTY STATE
JAMESTOWN JAMES CITY VA.

SCALE: 1 INCH = 100 FT. **NO. 295**

DATE: OCT. 24, 1951 SURVEYED BY
STONE & WEBSTER ENG. CORP.

Recorded Feb 21, 1952
in
D. B. 46 page 505
The Blanchard Clerk



VIRGINIA ELECTRIC AND POWER CO.
CHESTERFIELD-N.A.C.A.

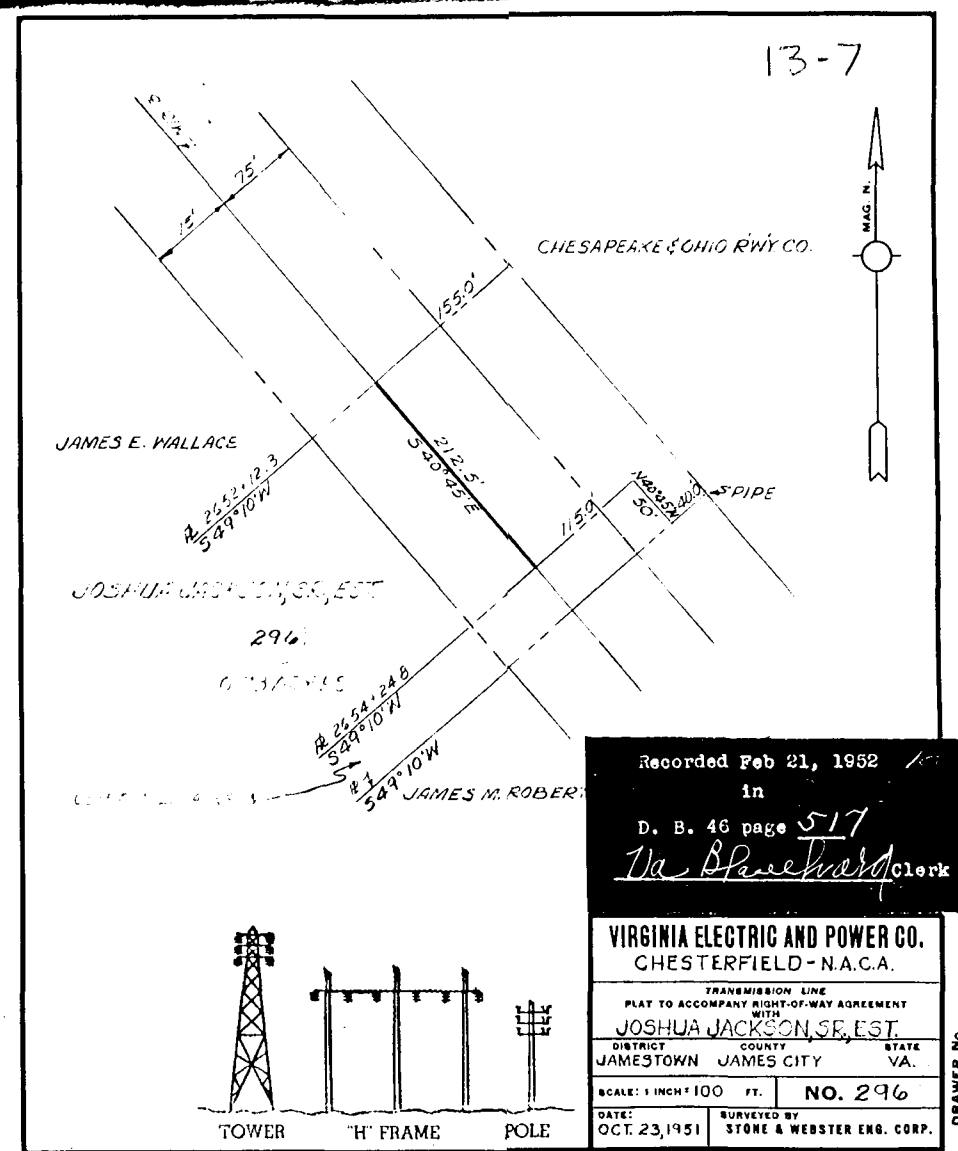
TRANSMISSION LINE
PLAT TO ACCOMPANY RIGHT-OF-WAY AGREEMENT
WITH
SARAH E. JONES

DISTRICT COUNTY STATE
POWHATAN JAMES CITY VA.

SCALE: 1 INCH = 200 FT. **NO. 196**

DATE: JULY 19, 1951 SURVEYED BY
STONE & WEBSTER ENG. CORP.

Recorded Feb 21, 1952
in
D. B. 46 page 510
The Blanchard Clerk



VIRGINIA ELECTRIC AND POWER CO.
CHESTERFIELD-N.A.C.A.

TRANSMISSION LINE
PLAT TO ACCOMPANY RIGHT-OF-WAY AGREEMENT
WITH
JOSHUA JACKSON, SR., EST.

DISTRICT COUNTY STATE
JAMESTOWN JAMES CITY VA.

SCALE: 1 INCH = 100 FT. **NO. 296**

DATE: OCT. 23, 1951 SURVEYED BY
STONE & WEBSTER ENG. CORP.

Recorded Feb 21, 1952
in
D. B. 46 page 517
The Blanchard Clerk

