

VIRGINIA ELECTRIC AND POWER CO.
CHESTERFIELD-N.A.C.A.

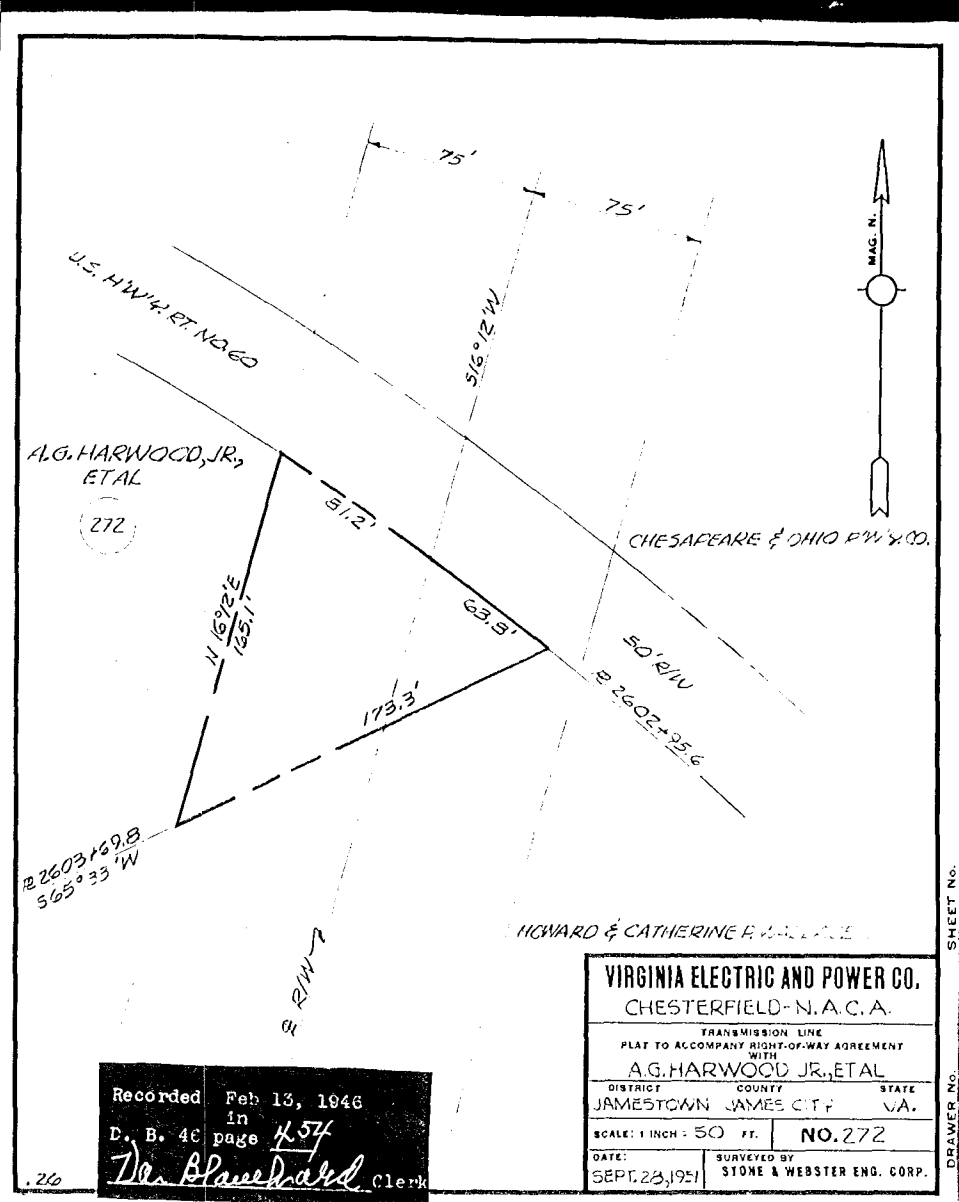
TRANSMISSION LINE
PLAT TO ACCOMPANY RIGHT-OF-WAY AGREEMENT
WITH
W.A. SLATER

DISTRICT COUNTY STATE
POWhatan JAMES CITY VA

SCALE: 1 INCH = 600 FT. NO. 172 A&B

DATE: JULY 9, 1951 SURVEYED BY
STONE & WEBSTER ENG. CORP.

Recorded Feb 13, 1952
in
D. B. 46 page 452
Dr. Blawie Clerk



VIRGINIA ELECTRIC AND POWER CO.
CHESTERFIELD-N.A.C.A.

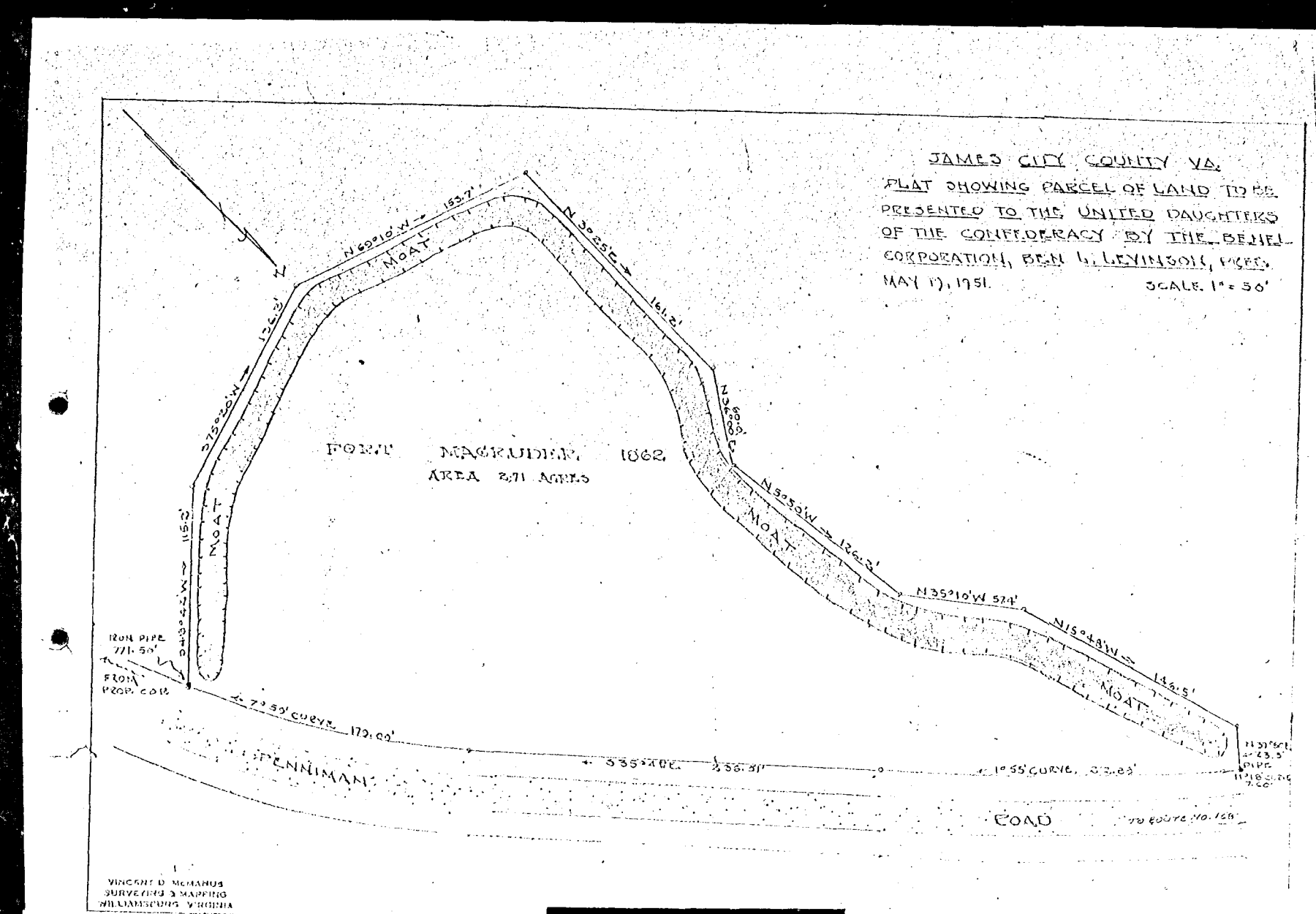
TRANSMISSION LINE
PLAT TO ACCOMPANY RIGHT-OF-WAY AGREEMENT
WITH
A.G. HARWOOD, JR., ET AL.

DISTRICT COUNTY STATE
JAMESTOWN JAMES CITY VA

SCALE: 1 INCH = 50 FT. NO. 272

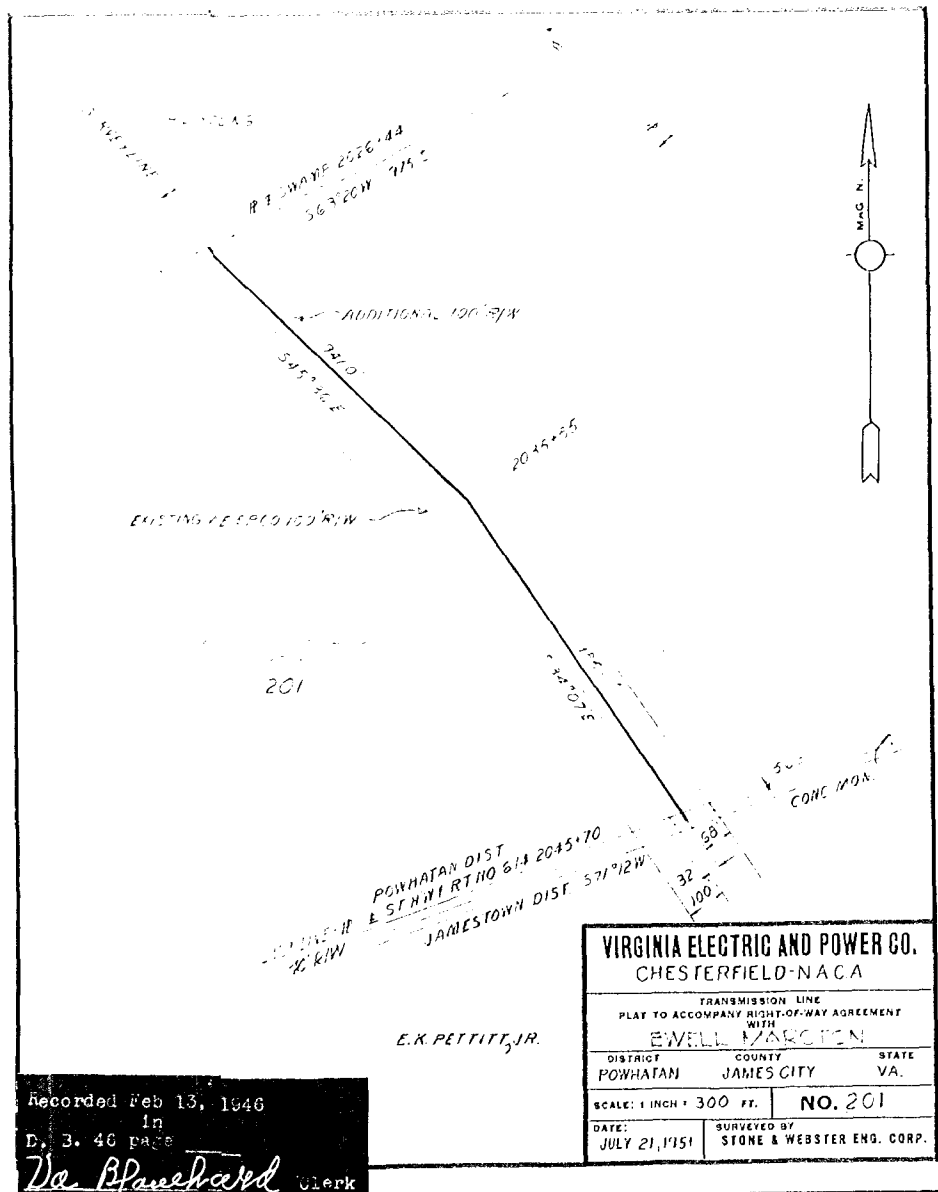
DATE: SEPT. 23, 1951 SURVEYED BY
STONE & WEBSTER ENG. CORP.

Recorded Feb 13, 1946
in
D. B. 46 page 454
Dr. Blawie Clerk



JAMES CITY COUNTY VA.
PLAT SHOWING PARCEL OF LAND TO BE
PRESENTED TO THE UNITED DAUGHTERS
OF THE CONFEDERACY BY THE BEHEL
CORPORATION, BEN H. LEVINSON, PRES.
MAY 17, 1951. SCALE 1" = 50'

Recorded Feb 16, 1952
in
D. B. 46 page
Dr. Blawie Clerk



VIRGINIA ELECTRIC AND POWER CO.
CHESTERFIELD-N.A.C.A.

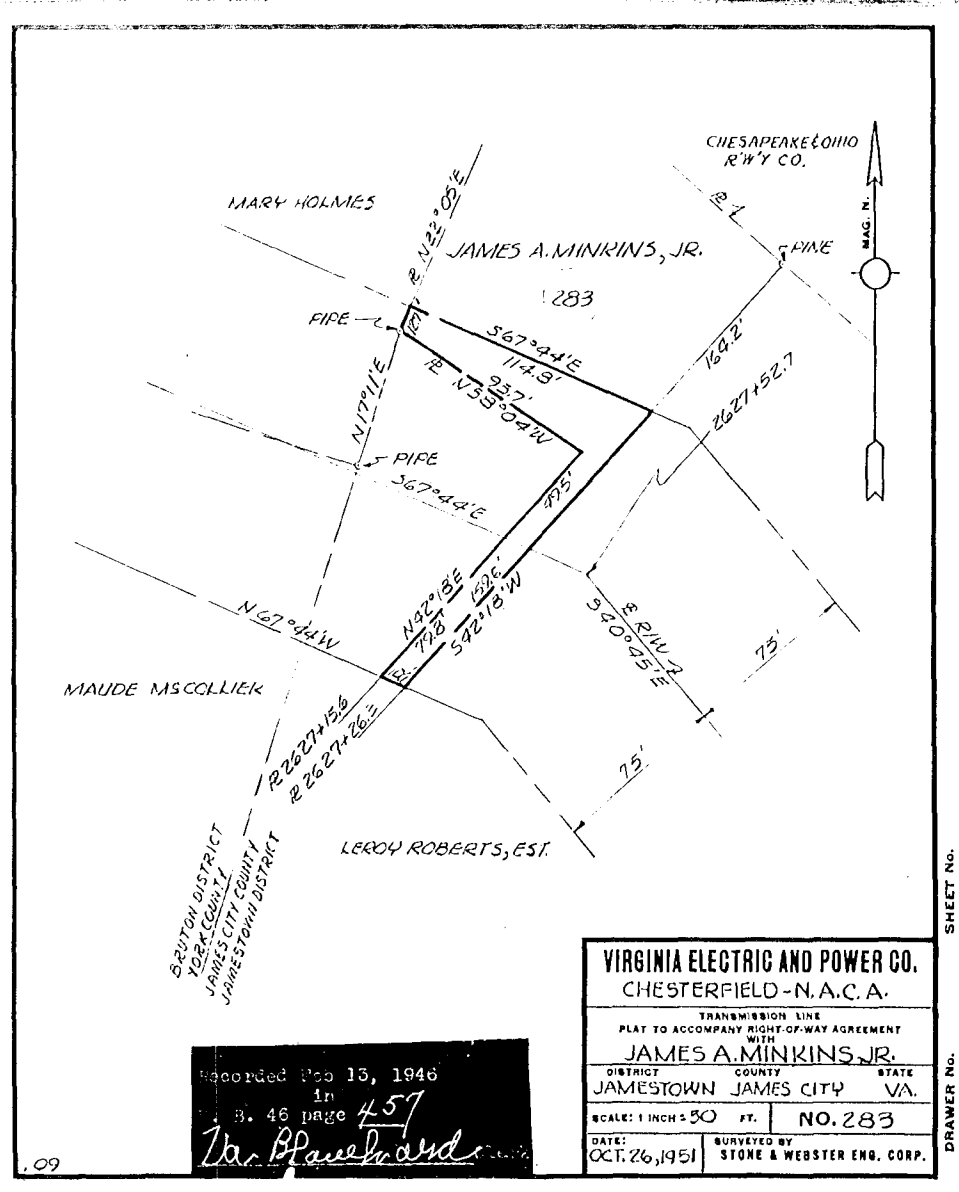
TRANSMISSION LINE
PLAT TO ACCOMPANY RIGHT-OF-WAY AGREEMENT
WITH
E.K. PETTIT, JR.

DISTRICT COUNTY STATE
POWhatan JAMES CITY VA

SCALE: 1 INCH = 300 FT. NO. 201

DATE: JULY 21, 1951 SURVEYED BY
STONE & WEBSTER ENG. CORP.

Recorded Feb 13, 1946
in
D. B. 46 page
Dr. Blawie Clerk



VIRGINIA ELECTRIC AND POWER CO.
CHESTERFIELD-N.A.C.A.

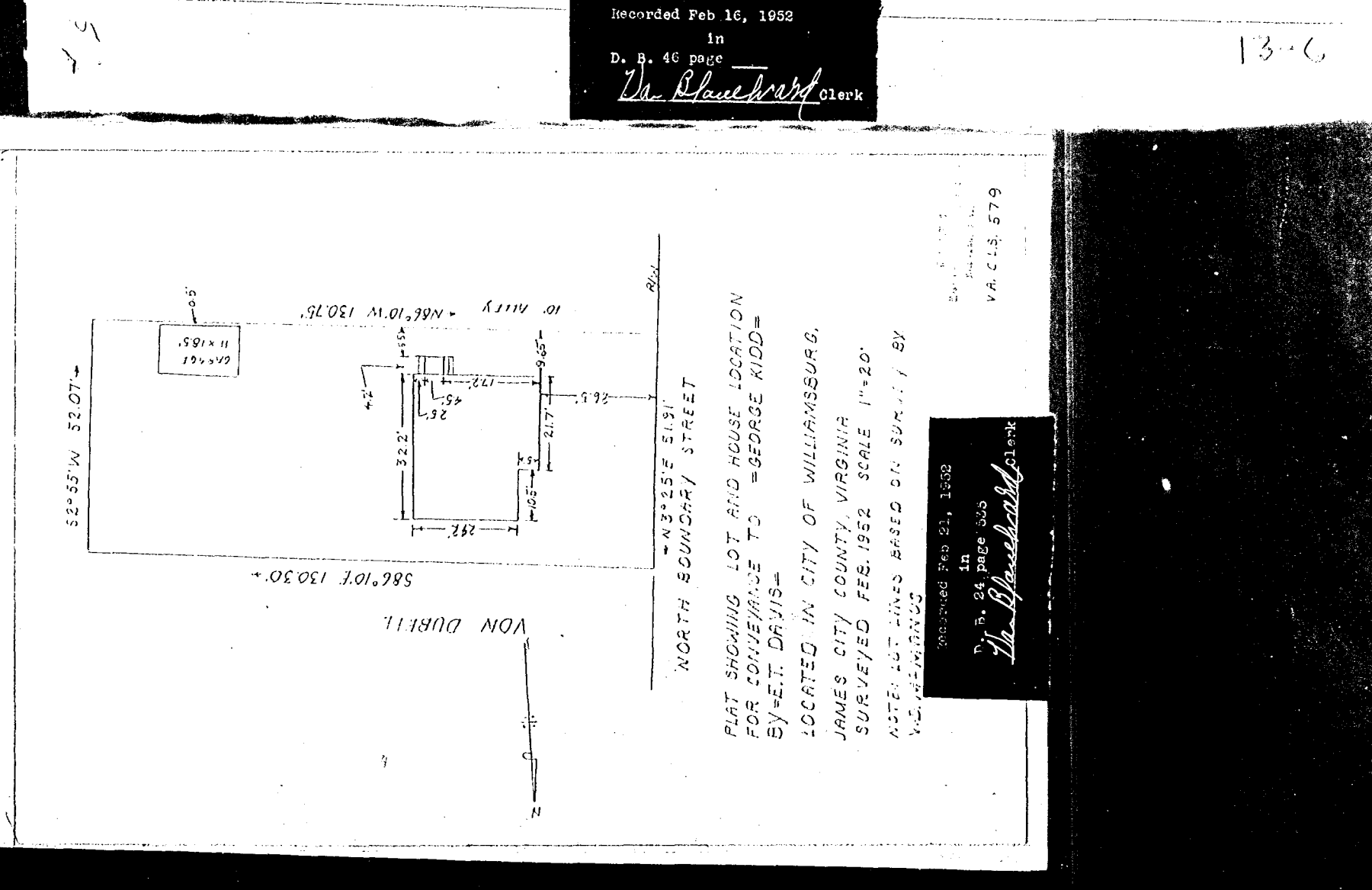
TRANSMISSION LINE
PLAT TO ACCOMPANY RIGHT-OF-WAY AGREEMENT
WITH
JAMES A. MINKINS, JR.

DISTRICT COUNTY STATE
JAMESTOWN JAMES CITY VA

SCALE: 1 INCH = 50 FT. NO. 283

DATE: OCT. 26, 1951 SURVEYED BY
STONE & WEBSTER ENG. CORP.

Recorded Feb 13, 1946
in
D. B. 46 page 457
Dr. Blawie Clerk



PLAT SHOWING LOT AND HOUSE LOCATION
FOR CONVEYANCE TO GEORGE KIDD
BY E.T. DAVIS
LOCATED IN CITY OF WILLIAMSBURG,
JAMES CITY COUNTY, VIRGINIA
SURVEYED FEB. 1952 SCALE 1" = 20'
INTERIOR LINES BASED ON SURVEY BY
V.S. MERRIN

Recorded Feb 21, 1952
in
D. B. 24 page 335
Dr. Blawie Clerk

VA. C.L.S. 579