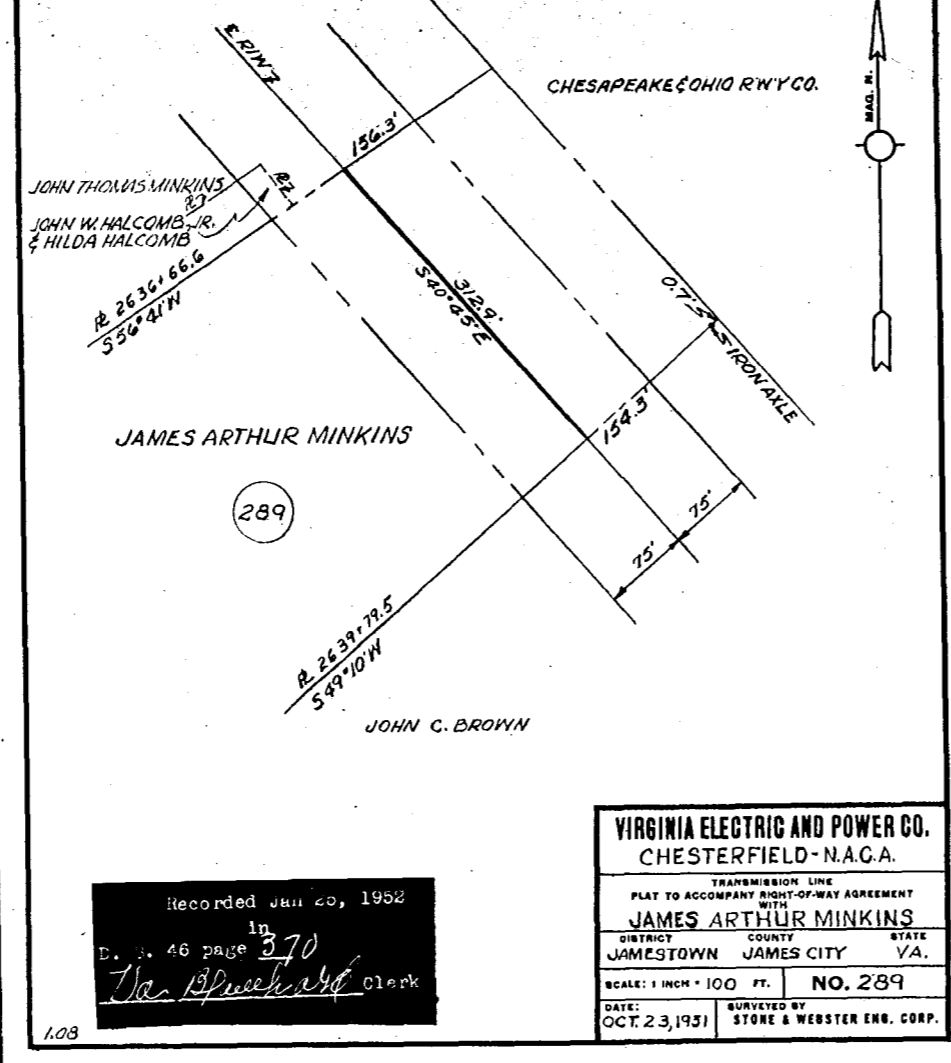


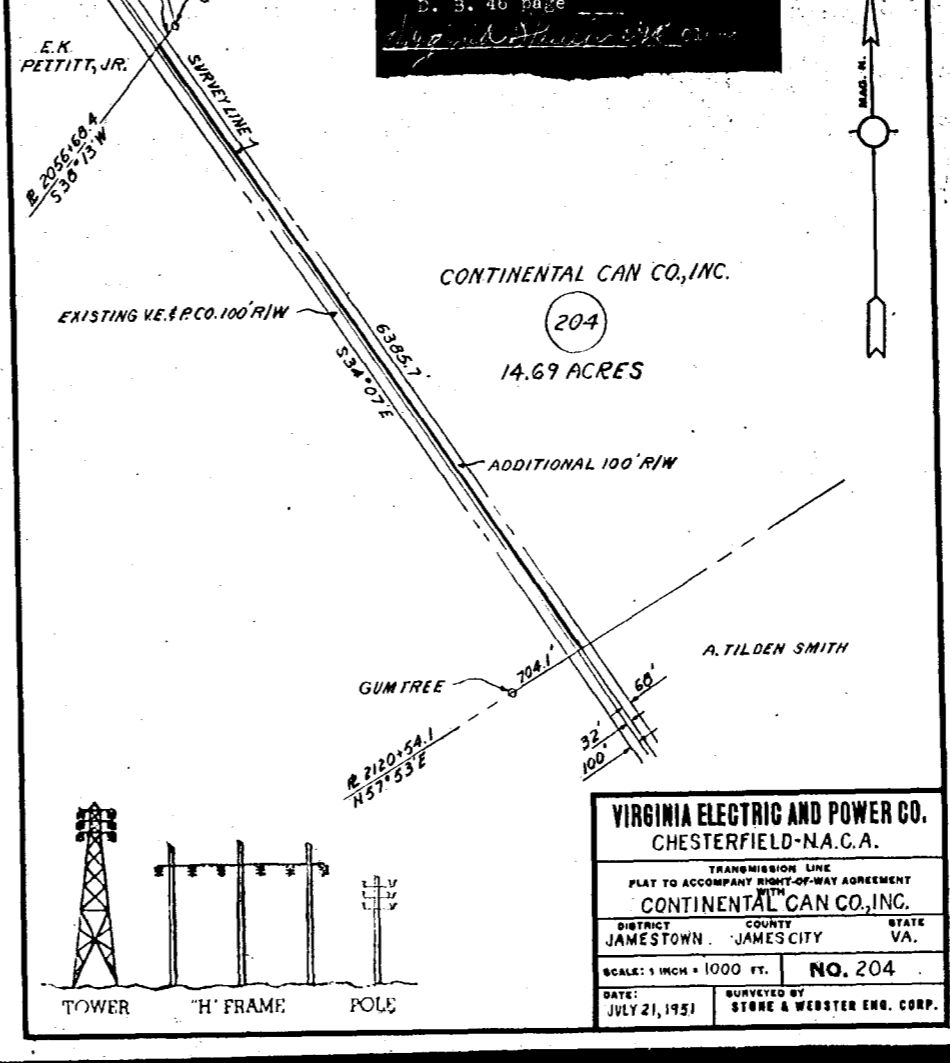
Recorded Jan 25, 1952  
in  
D. B. 46 page 364  
The Bluebird Clerk

**VIRGINIA ELECTRIC AND POWER CO.**  
CHESTERFIELD-N.A.C.A.  
TRANSMISSION LINE  
PLAT TO ACCOMPANY RIGHT-OF-WAY AGREEMENT  
WITH  
**WILLIAM WALLACE**  
DISTRICT COUNTY STATE  
JAMESTOWN JAMES CITY VA.  
SCALE: 1 INCH = 40 FT. **NO. 285**  
DATE: OCT. 25, 1951 SURVEYED BY STONE & WEBSTER ENG. CORP.



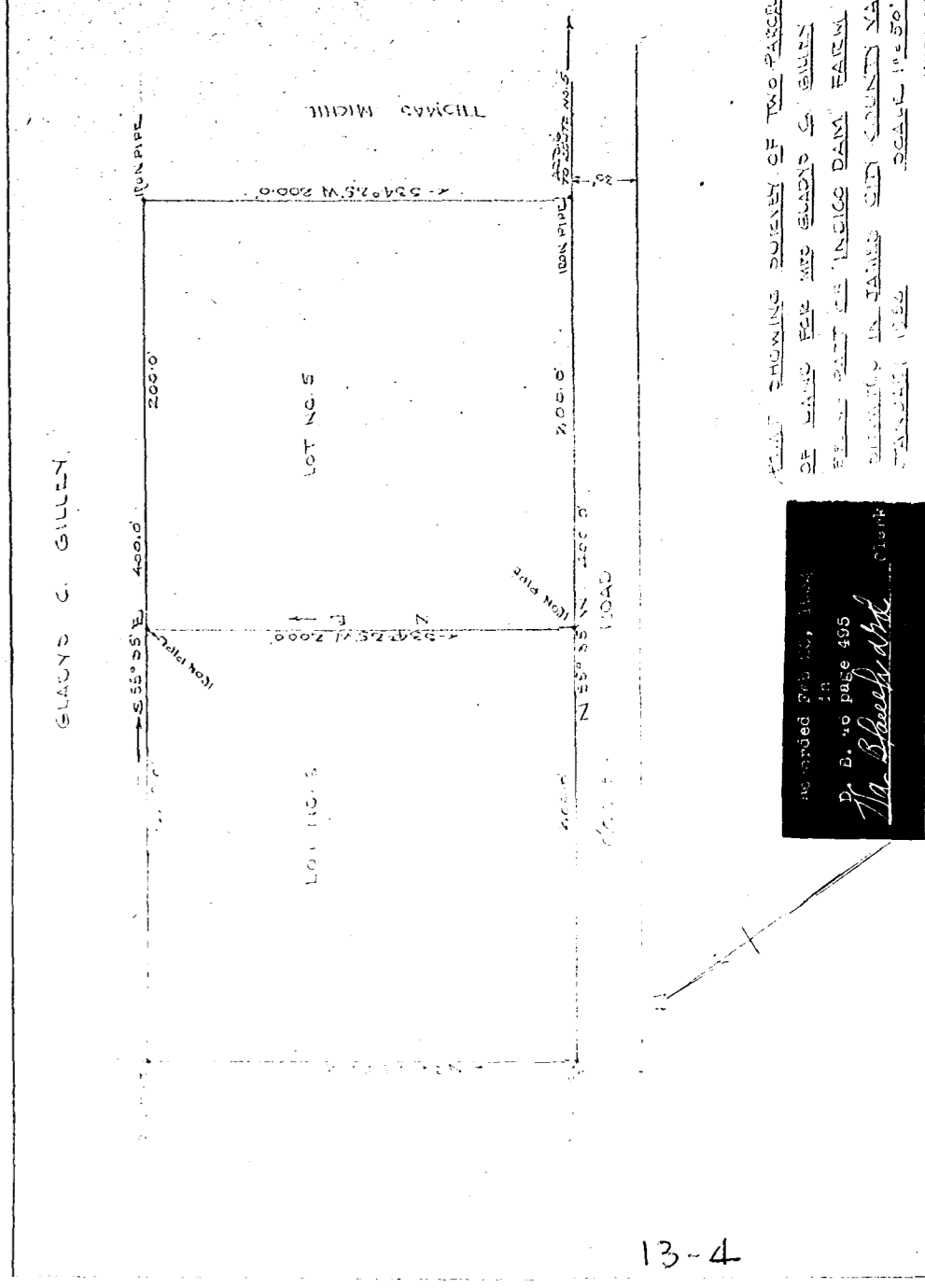
Recorded Jan 31, 1952  
in  
D. B. 46 page 370  
The Bluebird Clerk

**VIRGINIA ELECTRIC AND POWER CO.**  
CHESTERFIELD-N.A.C.A.  
TRANSMISSION LINE  
PLAT TO ACCOMPANY RIGHT-OF-WAY AGREEMENT  
WITH  
**JAMES ARTHUR MINKINS**  
DISTRICT COUNTY STATE  
JAMESTOWN JAMES CITY VA.  
SCALE: 1 INCH = 100 FT. **NO. 289**  
DATE: OCT. 23, 1951 SURVEYED BY STONE & WEBSTER ENG. CORP.

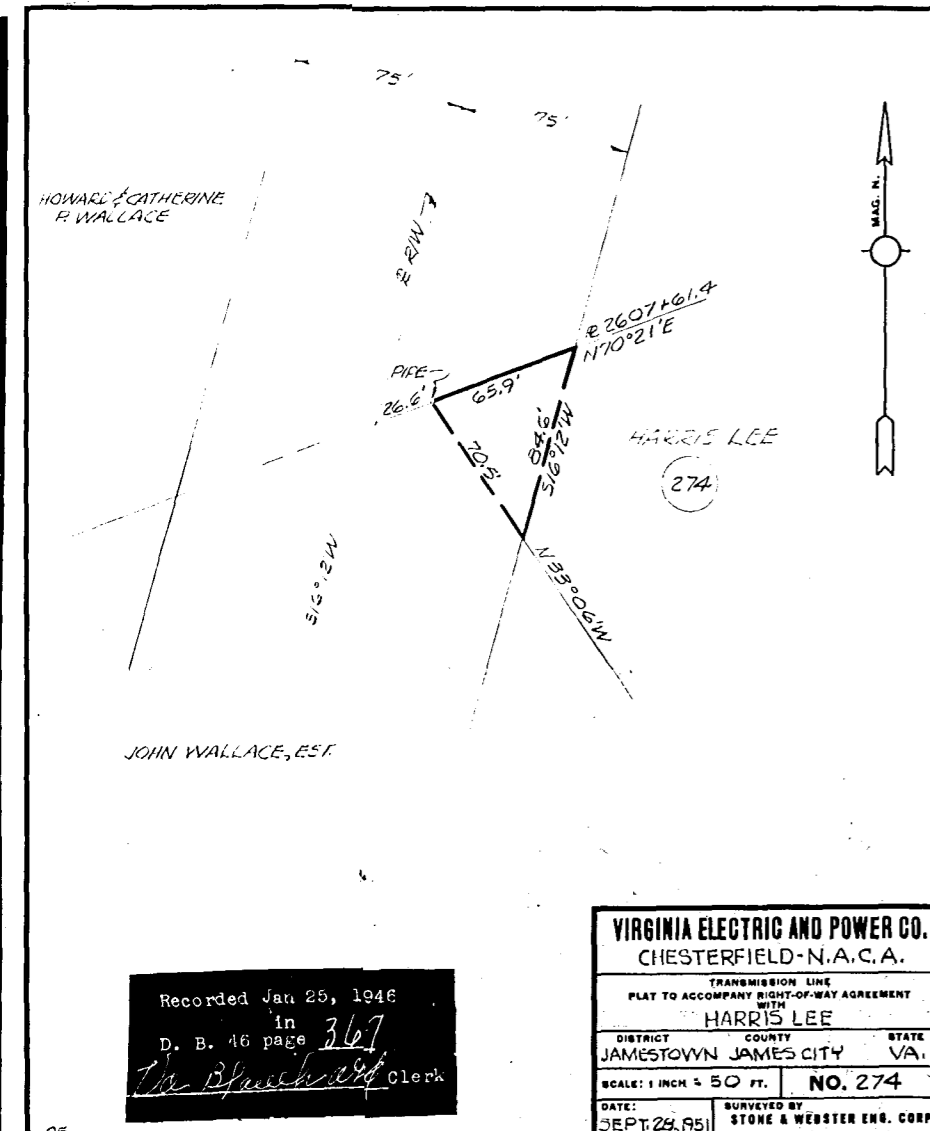


Recorded Jan 31, 1952  
in  
D. B. 46 page 370  
The Bluebird Clerk

**VIRGINIA ELECTRIC AND POWER CO.**  
CHESTERFIELD-N.A.C.A.  
TRANSMISSION LINE  
PLAT TO ACCOMPANY RIGHT-OF-WAY AGREEMENT  
WITH  
**CONTINENTAL CAN CO., INC.**  
DISTRICT COUNTY STATE  
JAMESTOWN JAMES CITY VA.  
SCALE: 1 INCH = 1000 FT. **NO. 204**  
DATE: JULY 21, 1951 SURVEYED BY STONE & WEBSTER ENG. CORP.

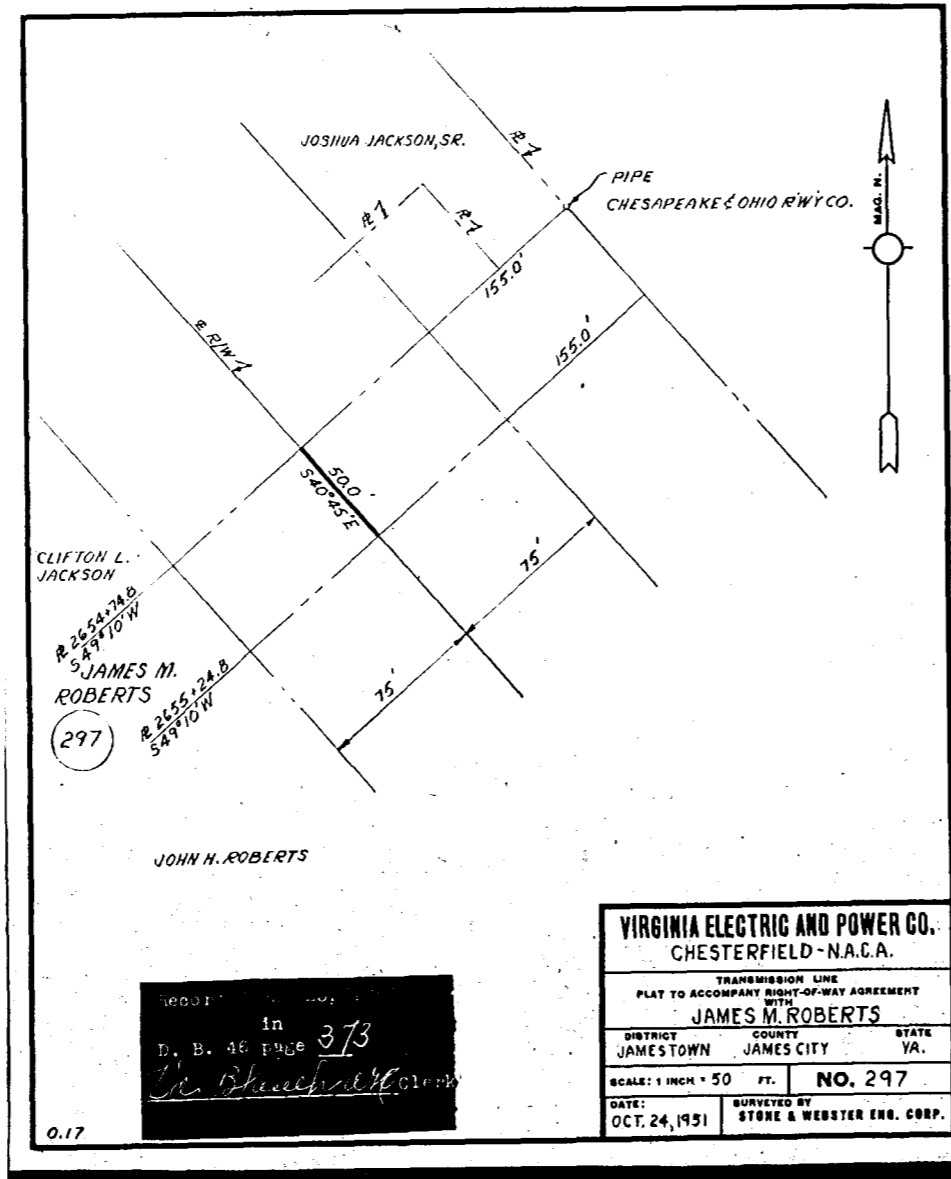


Recorded Feb 14, 1952  
in  
D. B. 46 page 495  
The Bluebird Clerk



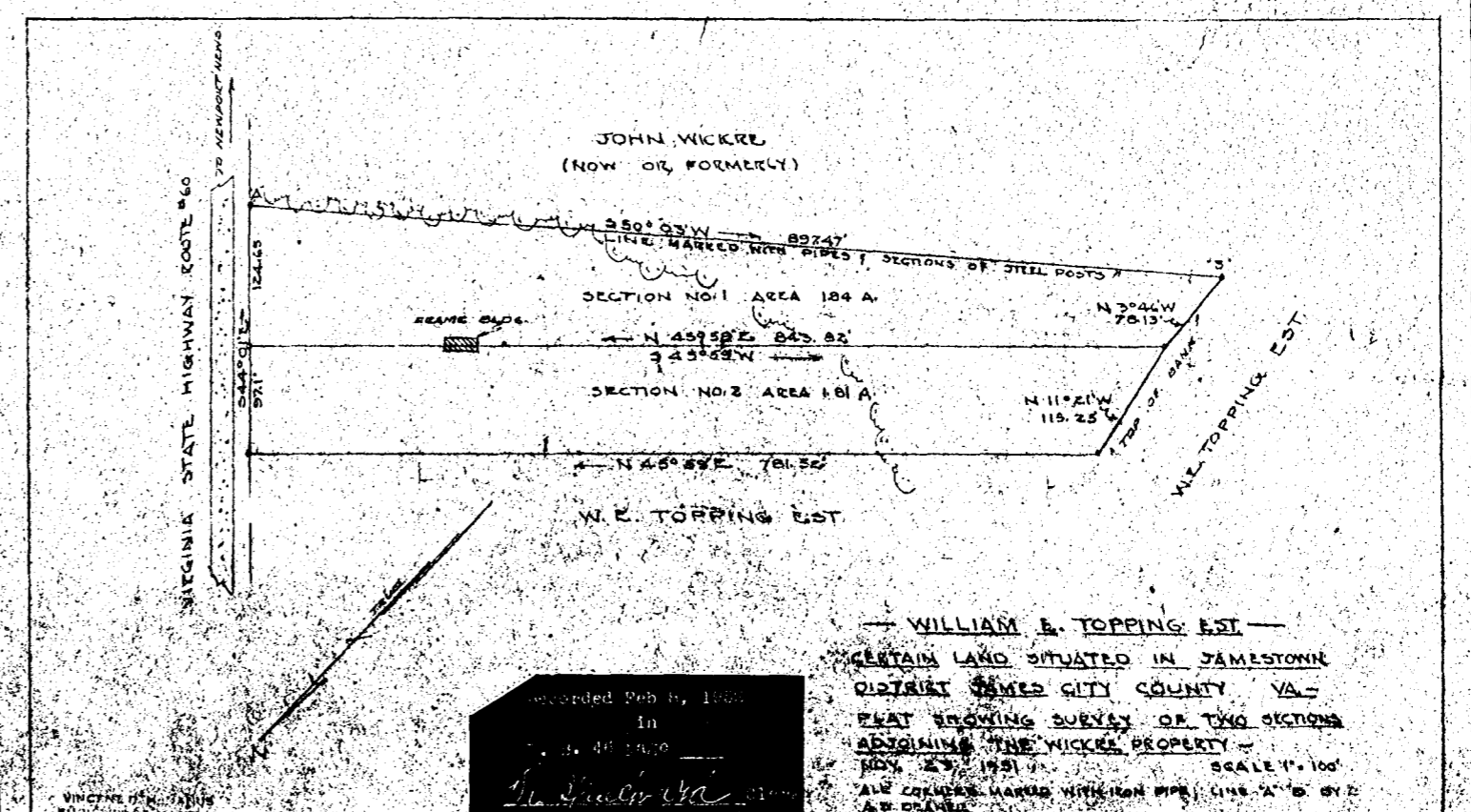
Recorded Jan 29, 1946  
in  
D. B. 46 page 367  
The Bluebird Clerk

**VIRGINIA ELECTRIC AND POWER CO.**  
CHESTERFIELD-N.A.C.A.  
TRANSMISSION LINE  
PLAT TO ACCOMPANY RIGHT-OF-WAY AGREEMENT  
WITH  
**HARRIS LEE**  
DISTRICT COUNTY STATE  
JAMESTOWN JAMES CITY VA.  
SCALE: 1 INCH = 50 FT. **NO. 274**  
DATE: SEPT. 28, 1951 SURVEYED BY STONE & WEBSTER ENG. CORP.



Recorded Jan 29, 1946  
in  
D. B. 46 page 373  
The Bluebird Clerk

**VIRGINIA ELECTRIC AND POWER CO.**  
CHESTERFIELD-N.A.C.A.  
TRANSMISSION LINE  
PLAT TO ACCOMPANY RIGHT-OF-WAY AGREEMENT  
WITH  
**JAMES M. ROBERTS**  
DISTRICT COUNTY STATE  
JAMESTOWN JAMES CITY VA.  
SCALE: 1 INCH = 50 FT. **NO. 297**  
DATE: OCT. 24, 1951 SURVEYED BY STONE & WEBSTER ENG. CORP.



Recorded Feb 4, 1952  
in  
D. B. 46 page 373  
The Bluebird Clerk

**WILLIAM B. TOPPING, EST.**  
CERTAIN LAND SITUATED IN JAMESTOWN  
DISTRICT JAMES CITY COUNTY VA.  
PLAT SHOWING SURVEY OF TWO SECTIONS  
ADJOINING THE WICKRE PROPERTY -  
NOV. 23, 1951 VA. SCALE 1" = 100'  
ALL CORNERS MARKED WITH IRON PIPE LINES "A" & "B" BY  
A. B. DRAVER