

VIRGINIA ELECTRIC AND POWER CO.
CHESTERFIELD - N.A.C.A.

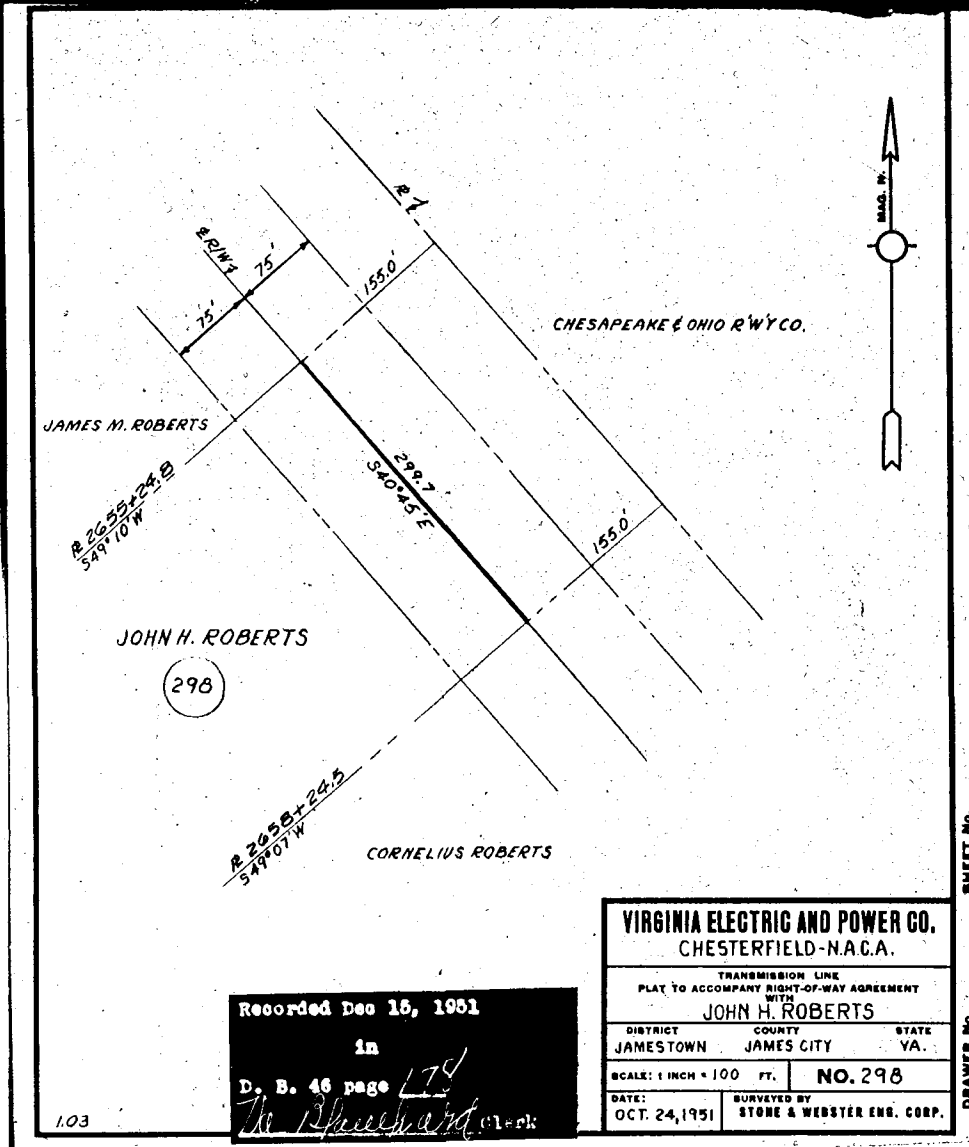
TRANSMISSION LINE
PLAT TO ACCOMPANY RIGHT-OF-WAY AGREEMENT
WITH
ROSE OLLIE WATKINS

DISTRICT COUNTY STATE
JAMESTOWN JAMES CITY VA.

SCALE: 1 INCH = 50 FT. NO. 287

DATE: OCT. 23, 1951 SURVEYED BY
STONE & WEBSTER ENG. CORP.

Recorded Dec 15, 1951
in
D. B. 46 page 172
Va. Bluebird Clerk



VIRGINIA ELECTRIC AND POWER CO.
CHESTERFIELD - N.A.C.A.

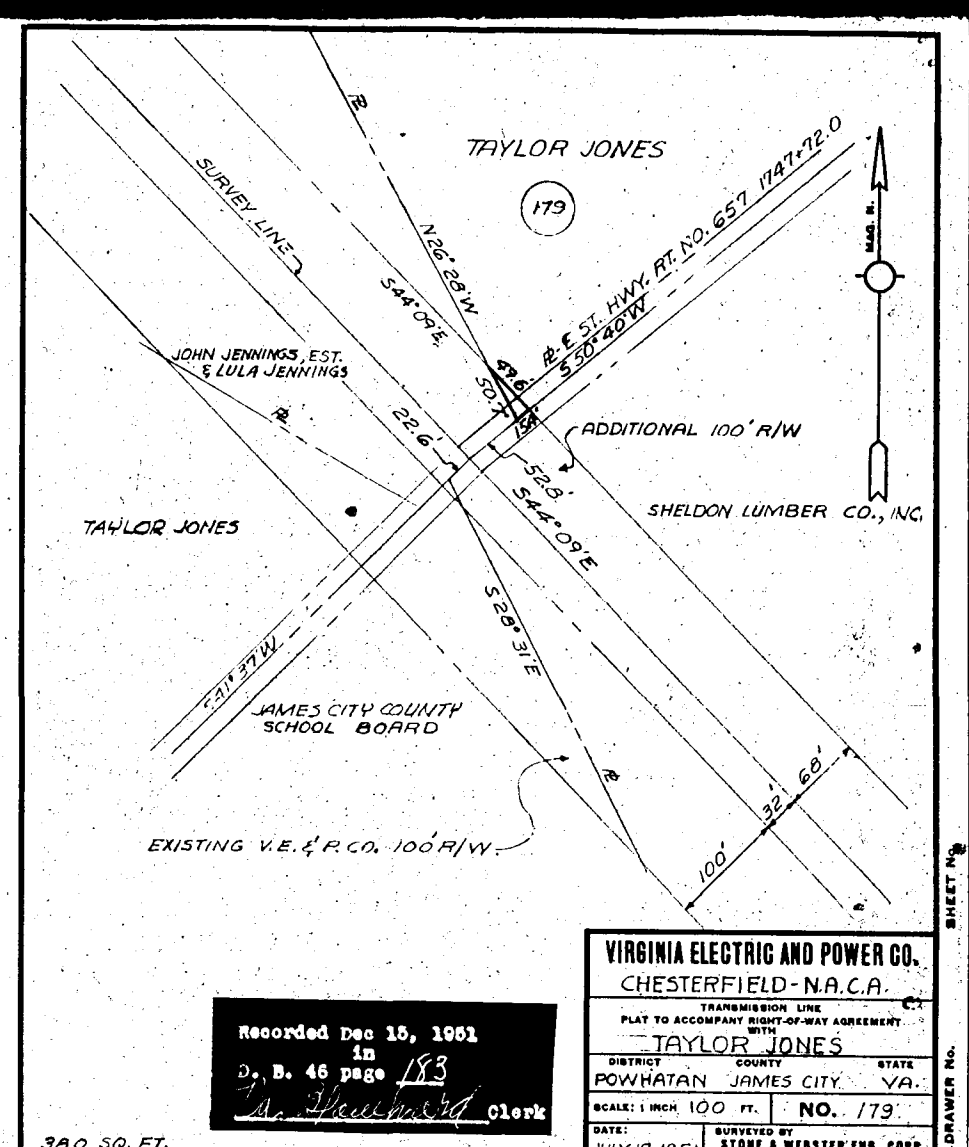
TRANSMISSION LINE
PLAT TO ACCOMPANY RIGHT-OF-WAY AGREEMENT
WITH
JOHN H. ROBERTS

DISTRICT COUNTY STATE
JAMESTOWN JAMES CITY VA.

SCALE: 1 INCH = 100 FT. NO. 298

DATE: OCT. 24, 1951 SURVEYED BY
STONE & WEBSTER ENG. CORP.

Recorded Dec 15, 1951
in
D. B. 46 page 173
Va. Bluebird Clerk



VIRGINIA ELECTRIC AND POWER CO.
CHESTERFIELD - N.A.C.A.

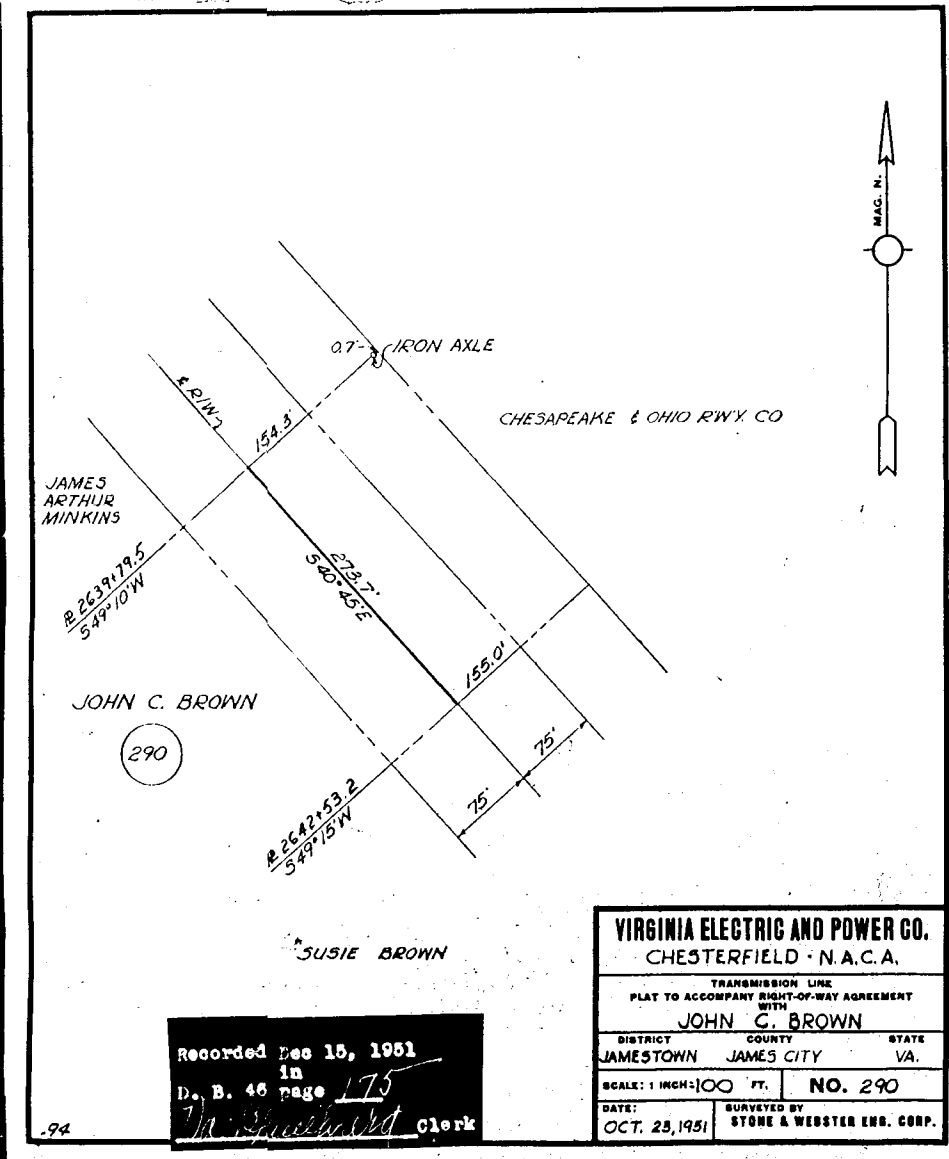
TRANSMISSION LINE
PLAT TO ACCOMPANY RIGHT-OF-WAY AGREEMENT
WITH
TAYLOR JONES

DISTRICT COUNTY STATE
POWHATAN JAMES CITY VA.

SCALE: 1 INCH = 100 FT. NO. 179

DATE: JULY 17, 1951 SURVEYED BY
STONE & WEBSTER ENG. CORP.

Recorded Dec 15, 1951
in
D. B. 46 page 183
Va. Bluebird Clerk



VIRGINIA ELECTRIC AND POWER CO.
CHESTERFIELD - N.A.C.A.

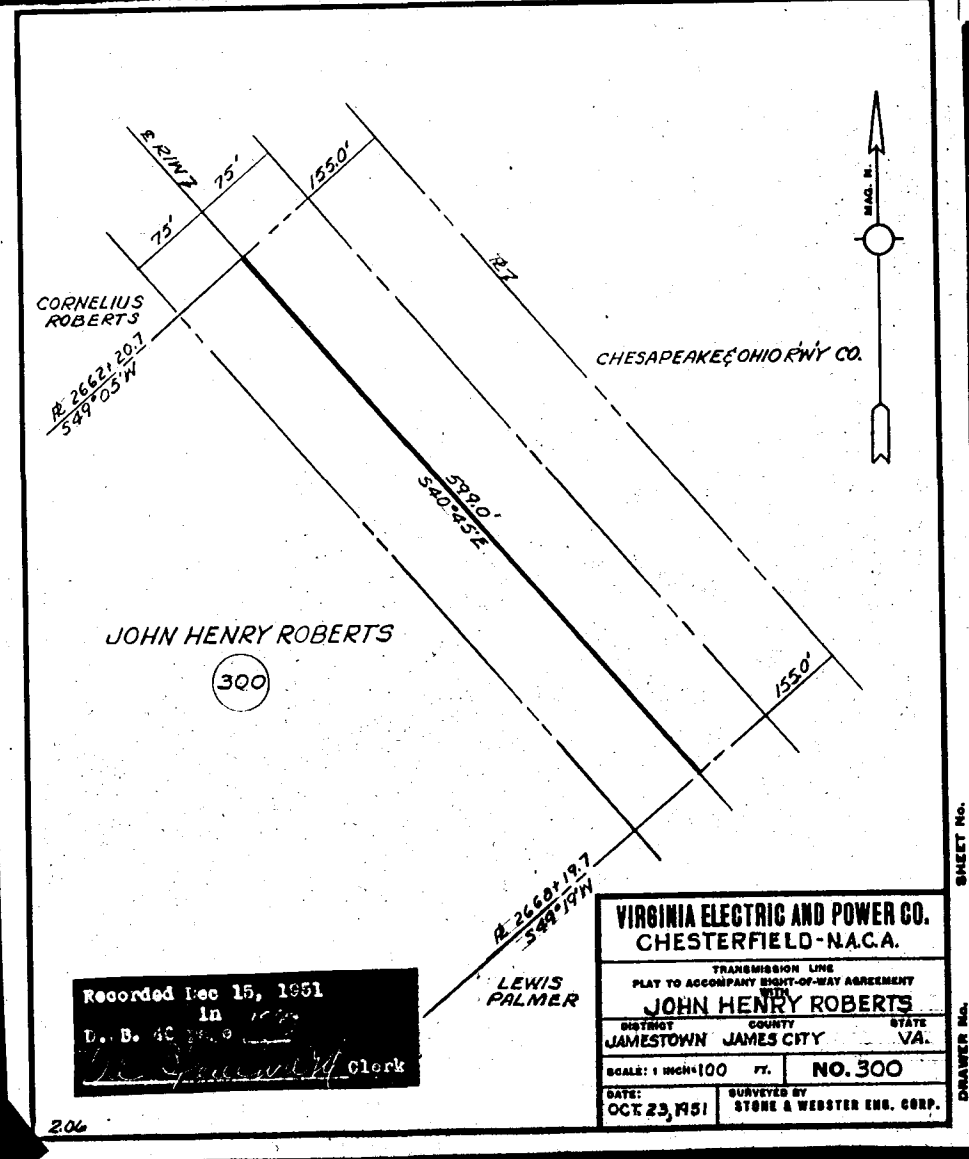
TRANSMISSION LINE
PLAT TO ACCOMPANY RIGHT-OF-WAY AGREEMENT
WITH
JOHN C. BROWN

DISTRICT COUNTY STATE
JAMESTOWN JAMES CITY VA.

SCALE: 1 INCH = 100 FT. NO. 290

DATE: OCT. 23, 1951 SURVEYED BY
STONE & WEBSTER ENG. CORP.

Recorded Dec 15, 1951
in
D. B. 46 page 175
Va. Bluebird Clerk



VIRGINIA ELECTRIC AND POWER CO.
CHESTERFIELD - N.A.C.A.

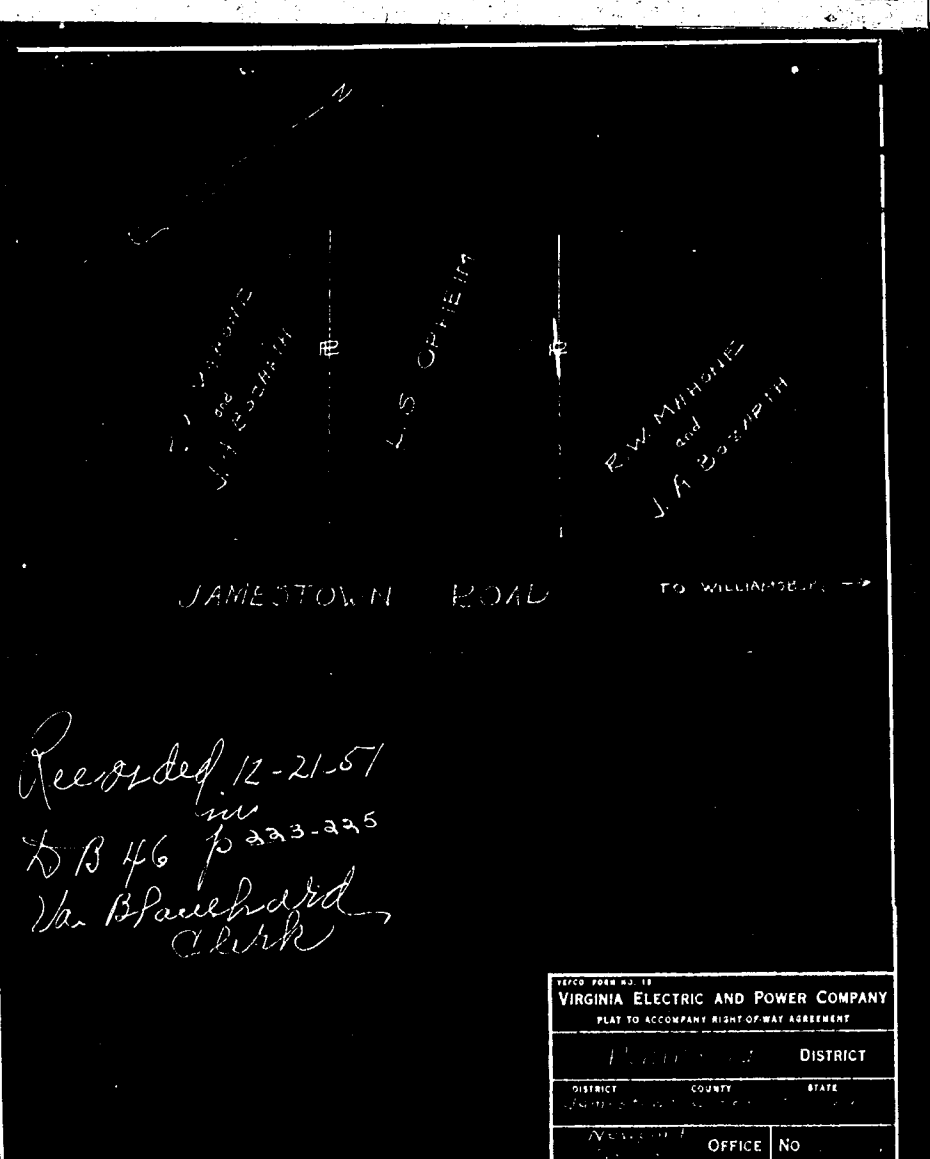
TRANSMISSION LINE
PLAT TO ACCOMPANY RIGHT-OF-WAY AGREEMENT
WITH
JOHN HENRY ROBERTS

DISTRICT COUNTY STATE
JAMESTOWN JAMES CITY VA.

SCALE: 1 INCH = 100 FT. NO. 300

DATE: OCT. 23, 1951 SURVEYED BY
STONE & WEBSTER ENG. CORP.

Recorded Dec 15, 1951
in
D. B. 46 page 176
Va. Bluebird Clerk



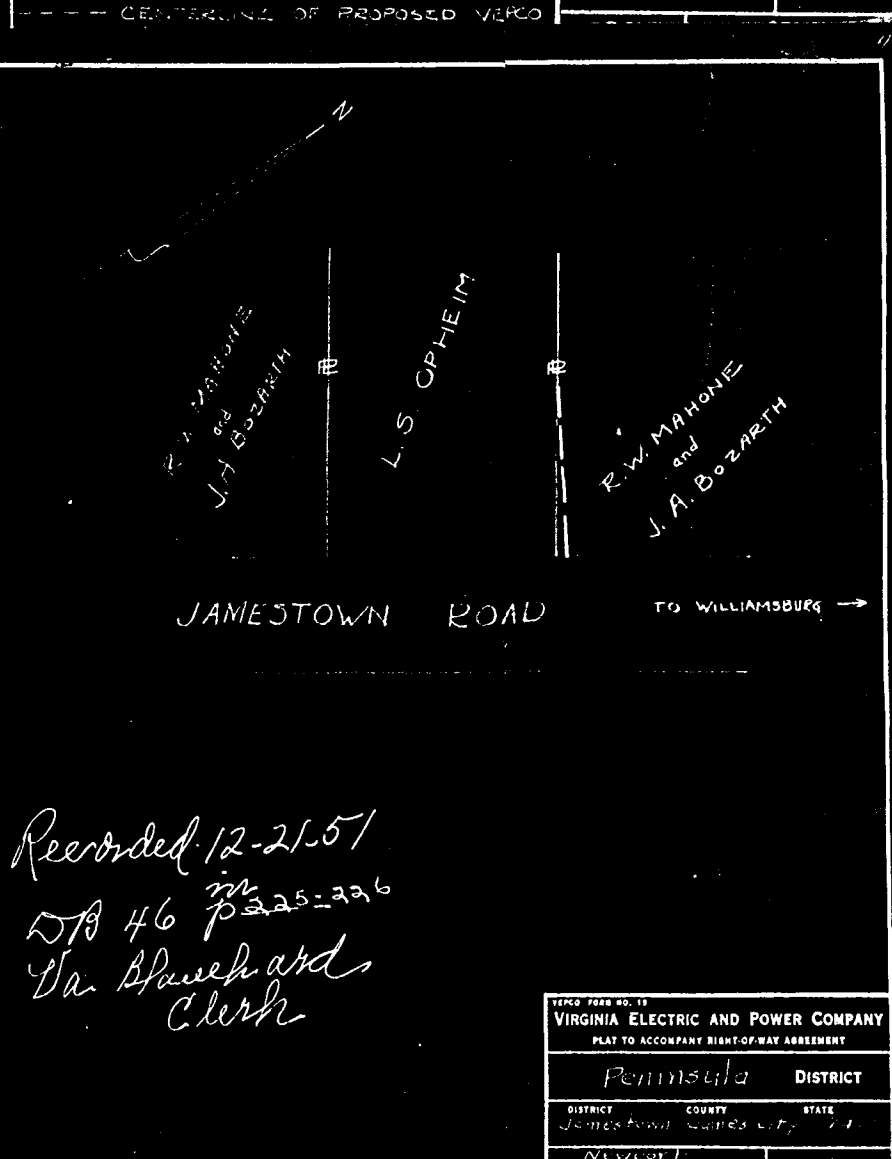
VIRGINIA ELECTRIC AND POWER COMPANY
PLAT TO ACCOMPANY RIGHT-OF-WAY AGREEMENT

DISTRICT COUNTY STATE
PENNSYLVANIA JAMES CITY VA.

SCALE: 1 INCH = 100 FT. NO. 323

DATE: SURVEYED BY

Recorded 12-21-51
in
DB 46 p 223-225
Va. Bluebird Clerk



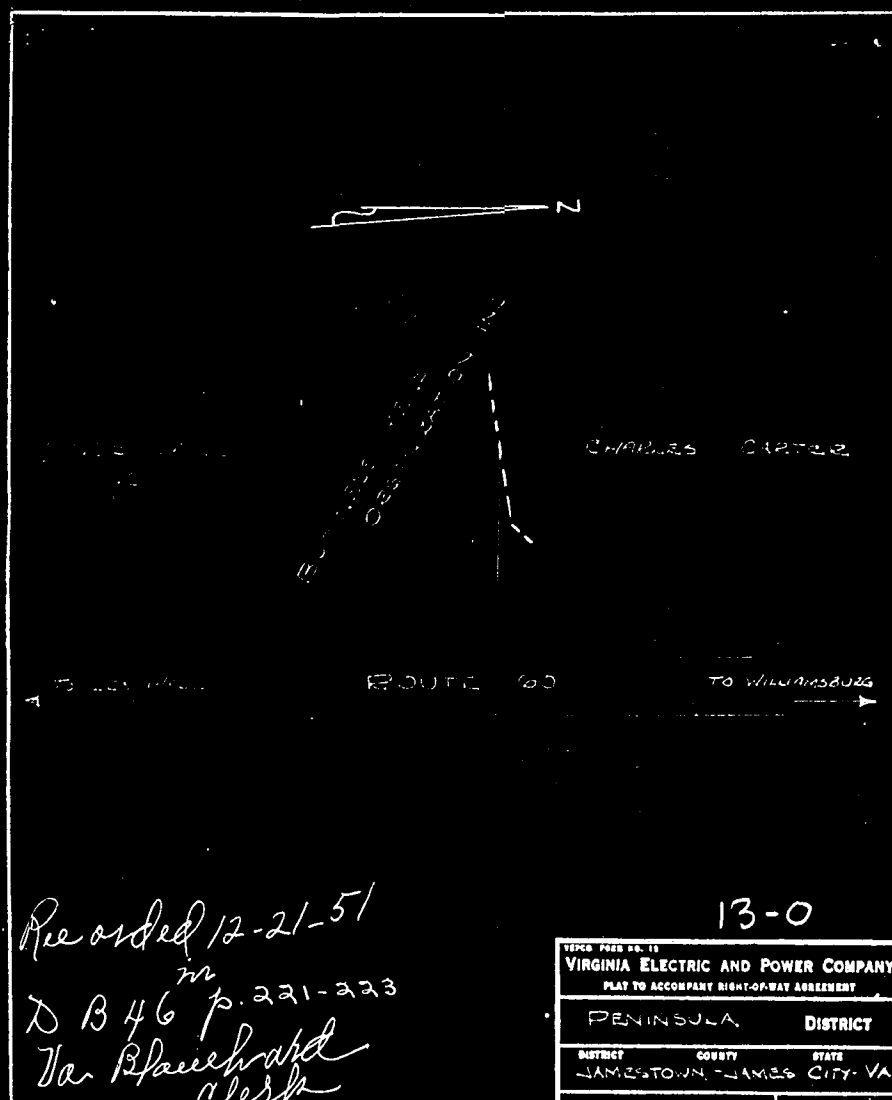
VIRGINIA ELECTRIC AND POWER COMPANY
PLAT TO ACCOMPANY RIGHT-OF-WAY AGREEMENT

DISTRICT COUNTY STATE
PENNSYLVANIA JAMES CITY VA.

SCALE: 1 INCH = 100 FT. NO. 325

DATE: SURVEYED BY

Recorded 12-21-51
in
DB 46 p 225-226
Va. Bluebird Clerk



VIRGINIA ELECTRIC AND POWER COMPANY
PLAT TO ACCOMPANY RIGHT-OF-WAY AGREEMENT

DISTRICT COUNTY STATE
PENNSYLVANIA JAMES CITY VA.

SCALE: 1 INCH = 100 FT. NO. 13-0

DATE: SURVEYED BY

Recorded 12-21-51
in
DB 46 p 221-223
Va. Bluebird Clerk