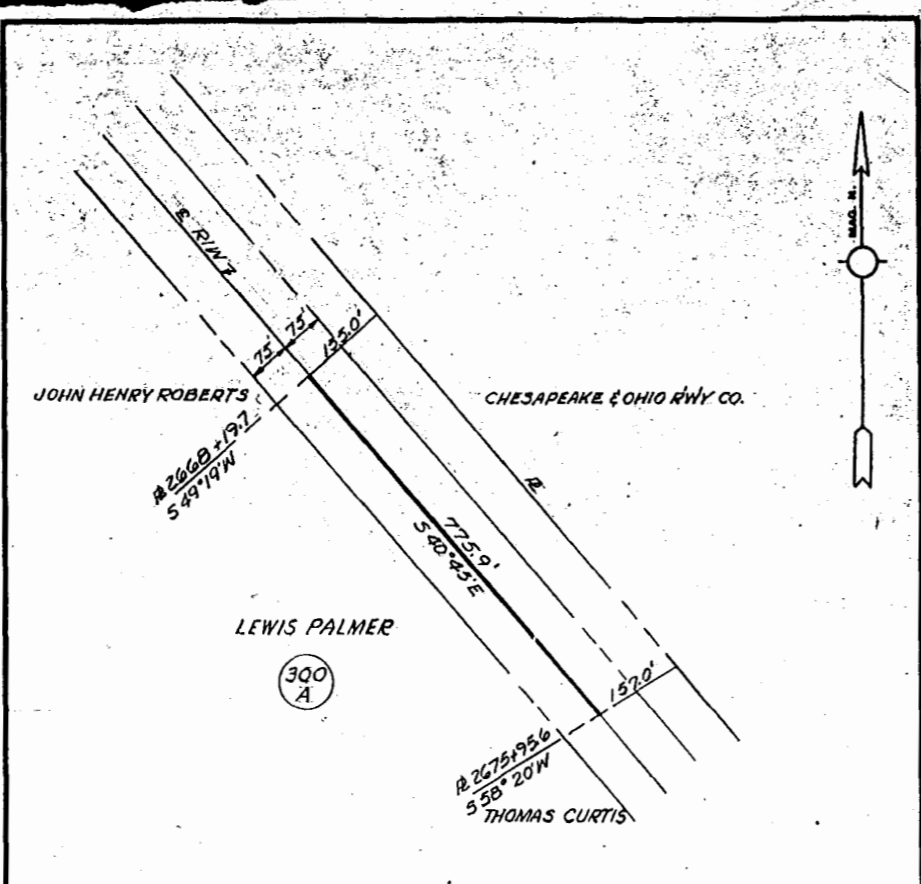


VIRGINIA ELECTRIC AND POWER CO.
CHESTERFIELD-N.A.C.A.
TRANSMISSION LINE
PLAT TO ACCOMPANY RIGHT-OF-WAY AGREEMENT
WITH
HUMPHREY LEE
DISTRICT COUNTY STATE
JAMESTOWN JAMES CITY VA.
SCALE: 1 INCH = 50 FT. NO. 292
DATE: OCT. 24, 1951 SURVEYED BY: STONE & WEBSTER ENG. CORP.

Recorded Dec 18, 1951
in
D. B. 46 page 151
Dr. Bluehart Clerk

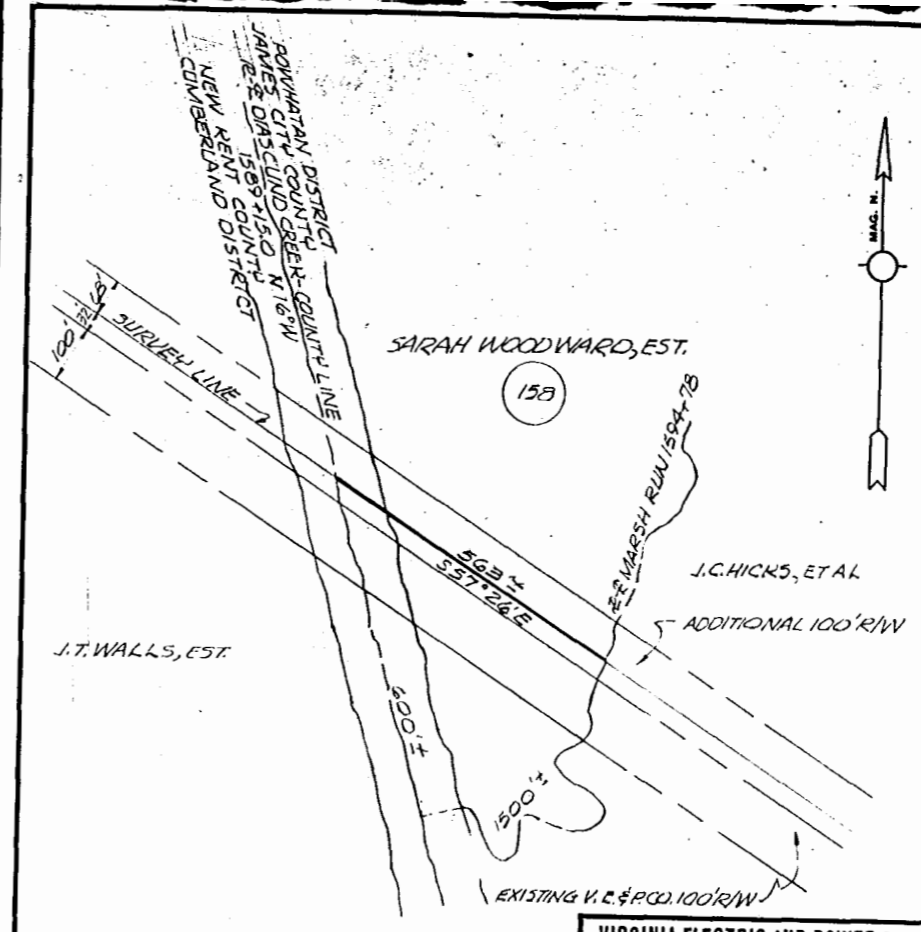
SHEET NO.
DRAWER NO.



VIRGINIA ELECTRIC AND POWER CO.
CHESTERFIELD-N.A.C.A.
TRANSMISSION LINE
PLAT TO ACCOMPANY RIGHT-OF-WAY AGREEMENT
WITH
LEWIS PALMER
DISTRICT COUNTY STATE
JAMESTOWN JAMES CITY VA.
SCALE: 1 INCH = 200 FT. NO. 300A
DATE: OCT. 23, 1951 SURVEYED BY: STONE & WEBSTER ENG. CORP.

Recorded Dec 15, 1951
in
D. B. 46 page 155
Dr. Bluehart Clerk

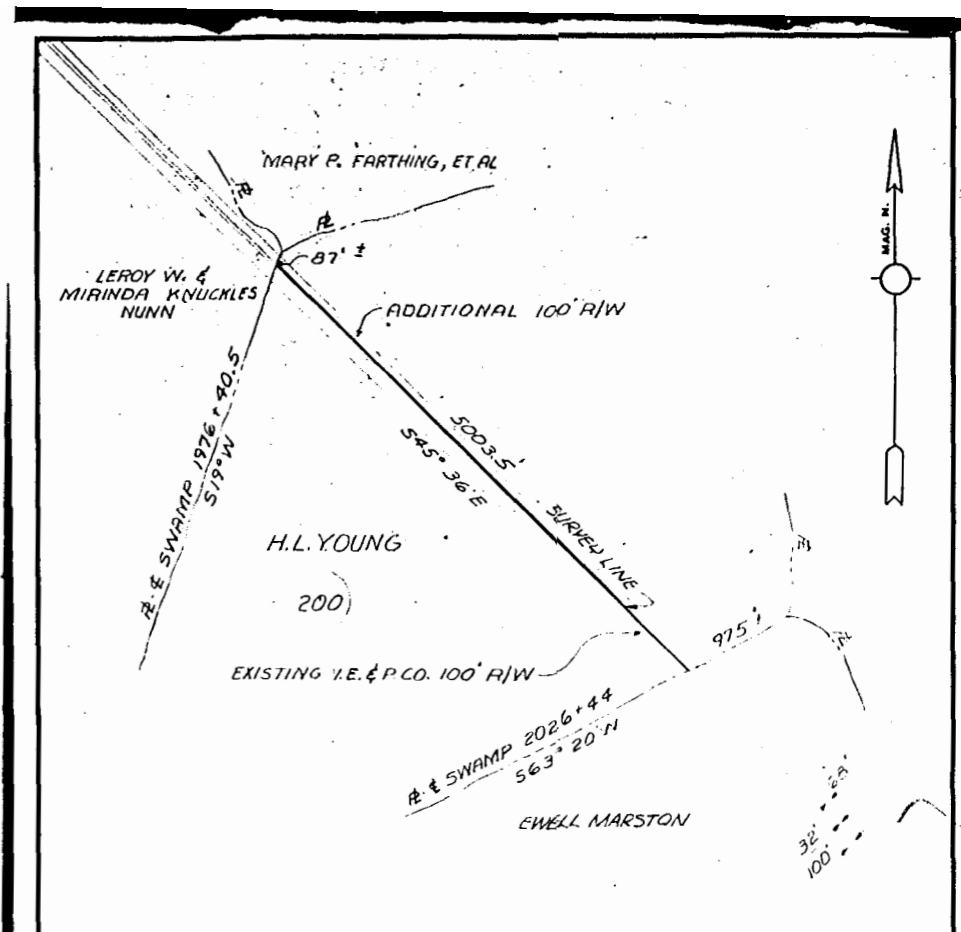
SHEET NO.
DRAWER NO.



VIRGINIA ELECTRIC AND POWER CO.
CHESTERFIELD-N.A.C.A.
TRANSMISSION LINE
PLAT TO ACCOMPANY RIGHT-OF-WAY AGREEMENT
WITH
SARAH WOODWARD, EST.
DISTRICT COUNTY STATE
POWHATAN JAMES CITY VA.
SCALE: 1 INCH = 200 FT. NO. 158
DATE: JULY 9, 1951 SURVEYED BY: STONE & WEBSTER ENG. CORP.

Recorded Dec 15, 1951
in
D. B. 46 page 166
Dr. Bluehart Clerk

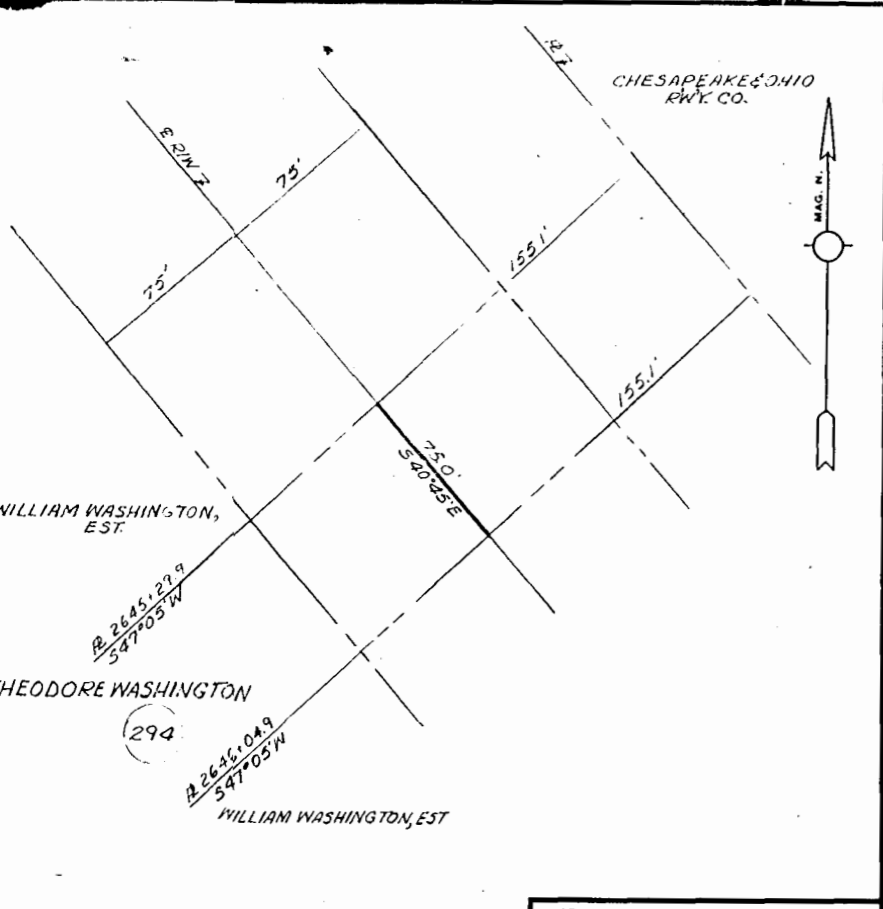
SHEET NO.
DRAWER NO.



VIRGINIA ELECTRIC AND POWER CO.
CHESTERFIELD-N.A.C.A.
TRANSMISSION LINE
PLAT TO ACCOMPANY RIGHT-OF-WAY AGREEMENT
WITH
H.L. YOUNG
DISTRICT COUNTY STATE
POWHATAN JAMES CITY VA.
SCALE: 1 INCH = 100 FT. NO. 200
DATE: JULY 19, 1951 SURVEYED BY: STONE & WEBSTER ENG. CORP.

Recorded Dec 15, 1951
in
D. B. 46 page 167
Dr. Bluehart Clerk

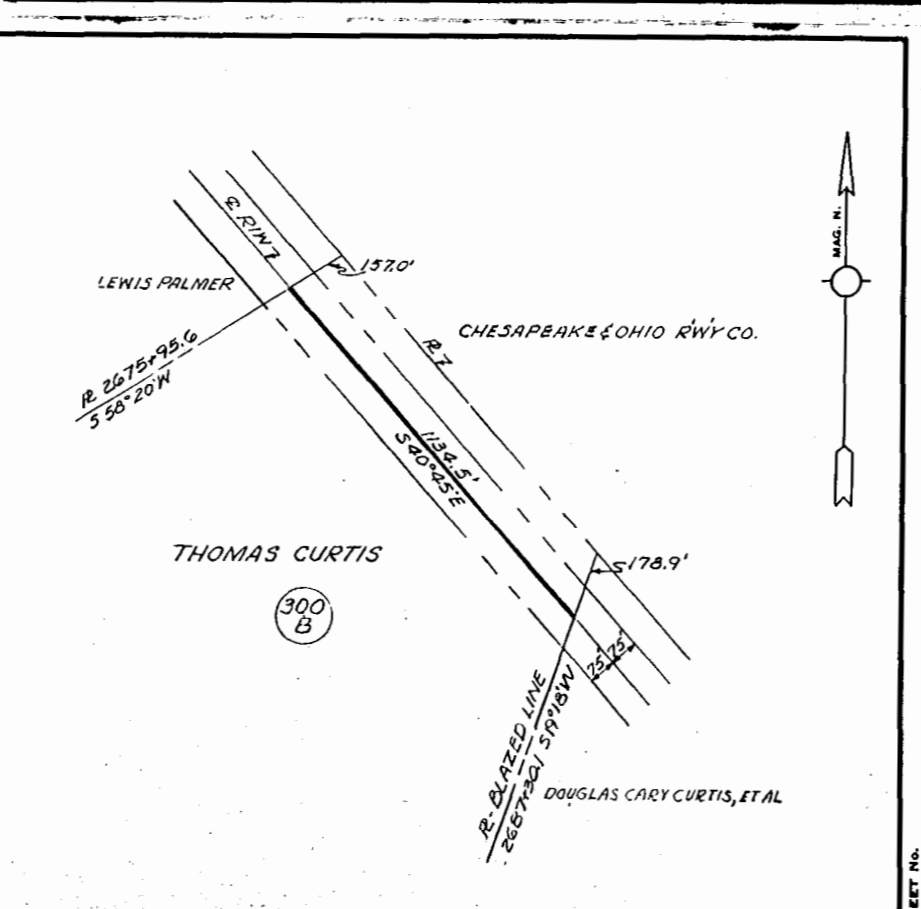
SHEET NO.
DRAWER NO.



VIRGINIA ELECTRIC AND POWER CO.
CHESTERFIELD-N.A.C.A.
TRANSMISSION LINE
PLAT TO ACCOMPANY RIGHT-OF-WAY AGREEMENT
WITH
THEODORE WASHINGTON
DISTRICT COUNTY STATE
JAMESTOWN JAMES CITY VA.
SCALE: 1 INCH = 50 FT. NO. 294
DATE: OCT. 25, 1951 SURVEYED BY: STONE & WEBSTER ENG. CORP.

Recorded Dec 18, 1951
in
D. B. 46 page 152
Dr. Bluehart Clerk

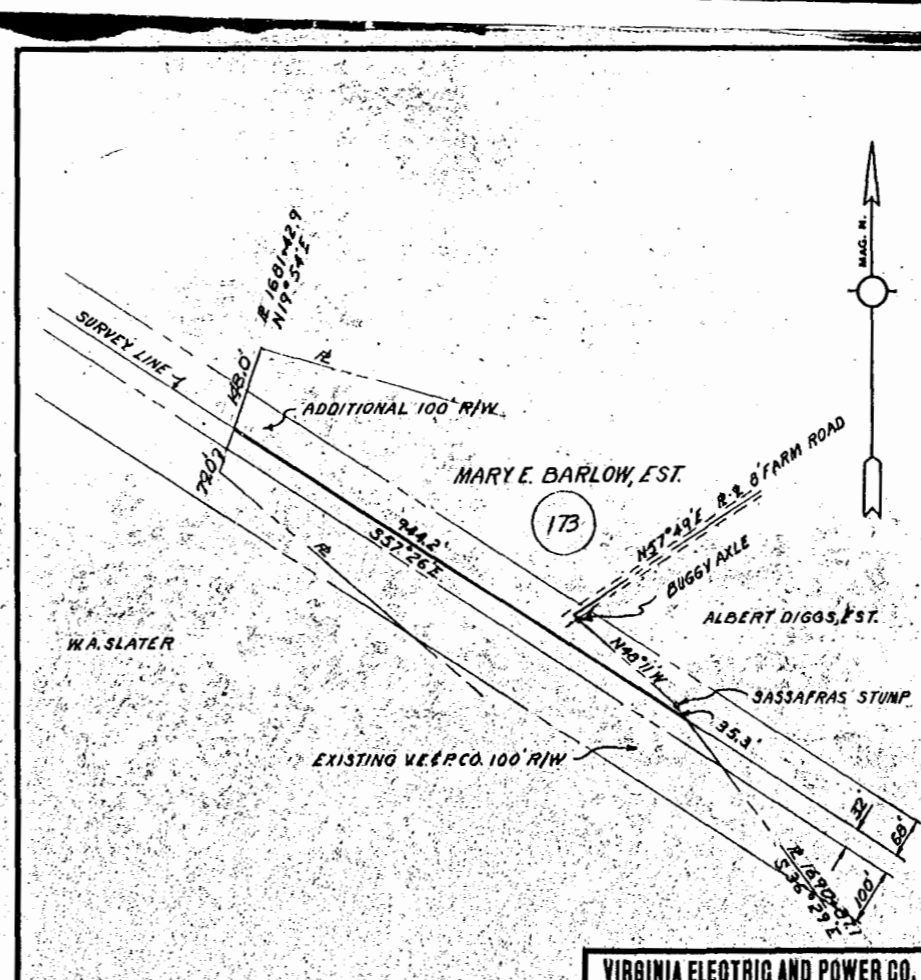
SHEET NO.
DRAWER NO.



VIRGINIA ELECTRIC AND POWER CO.
CHESTERFIELD-N.A.C.A.
TRANSMISSION LINE
PLAT TO ACCOMPANY RIGHT-OF-WAY AGREEMENT
WITH
THOMAS CURTIS
DISTRICT COUNTY STATE
JAMESTOWN JAMES CITY VA.
SCALE: 1 INCH = 300 FT. NO. 300B
DATE: OCT. 23, 1951 SURVEYED BY: STONE & WEBSTER ENG. CORP.

Recorded Dec 18, 1951
in
D. B. 46 page 157
Dr. Bluehart Clerk

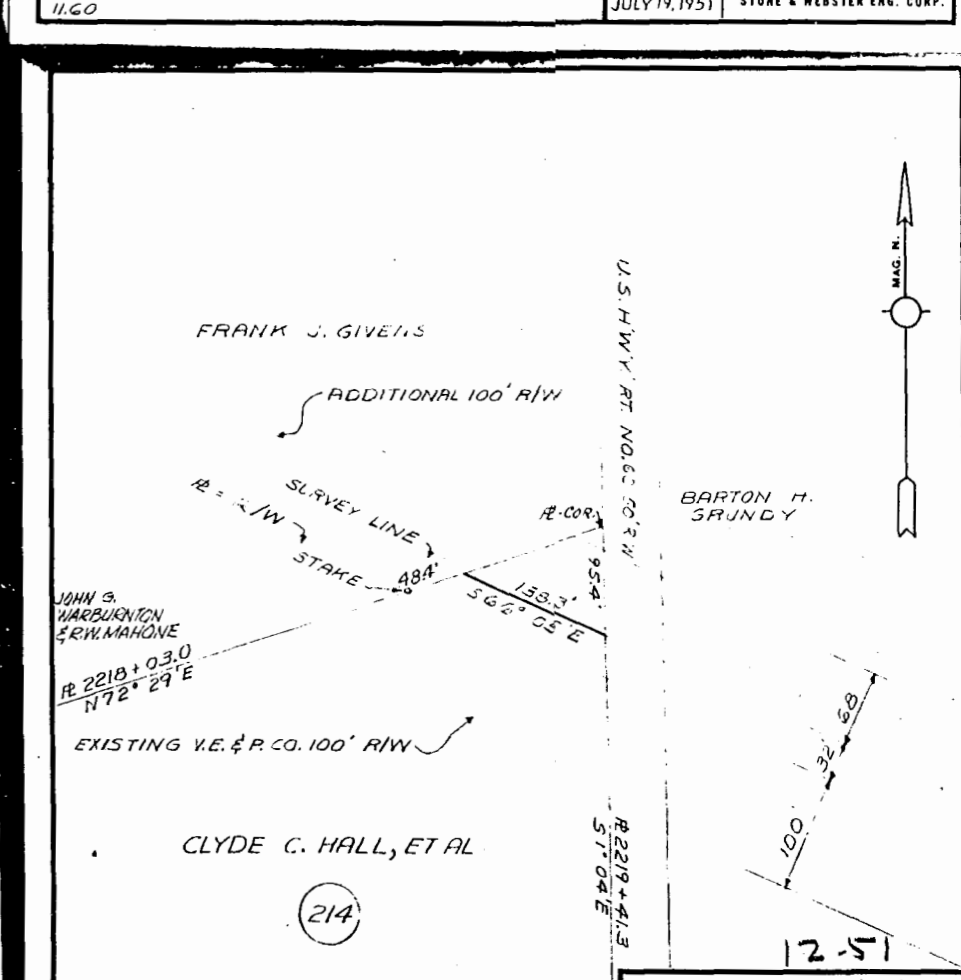
SHEET NO.
DRAWER NO.



VIRGINIA ELECTRIC AND POWER CO.
CHESTERFIELD-N.A.C.A.
TRANSMISSION LINE
PLAT TO ACCOMPANY RIGHT-OF-WAY AGREEMENT
WITH
MARY E. BARLOW, EST.
DISTRICT COUNTY STATE
POWHATAN JAMES CITY VA.
SCALE: 1 INCH = 200 FT. NO. 173
DATE: JULY 9, 1951 SURVEYED BY: STONE & WEBSTER ENG. CORP.

Recorded Dec 15, 1951
in
D. B. 46 page 164
Dr. Bluehart Clerk

SHEET NO.
DRAWER NO.



VIRGINIA ELECTRIC AND POWER CO.
CHESTERFIELD-N.A.C.A.
TRANSMISSION LINE
PLAT TO ACCOMPANY RIGHT-OF-WAY AGREEMENT
WITH
CLYDE C. HALL, ET AL
DISTRICT COUNTY STATE
JAMESTOWN JAMES CITY VA.
SCALE: 1 INCH = 100 FT. NO. 214
DATE: JULY 26, 1951 SURVEYED BY: STONE & WEBSTER ENG. CORP.

Recorded Dec 15, 1951
in
D. B. 46 page 176
Dr. Bluehart Clerk

SHEET NO.
DRAWER NO.