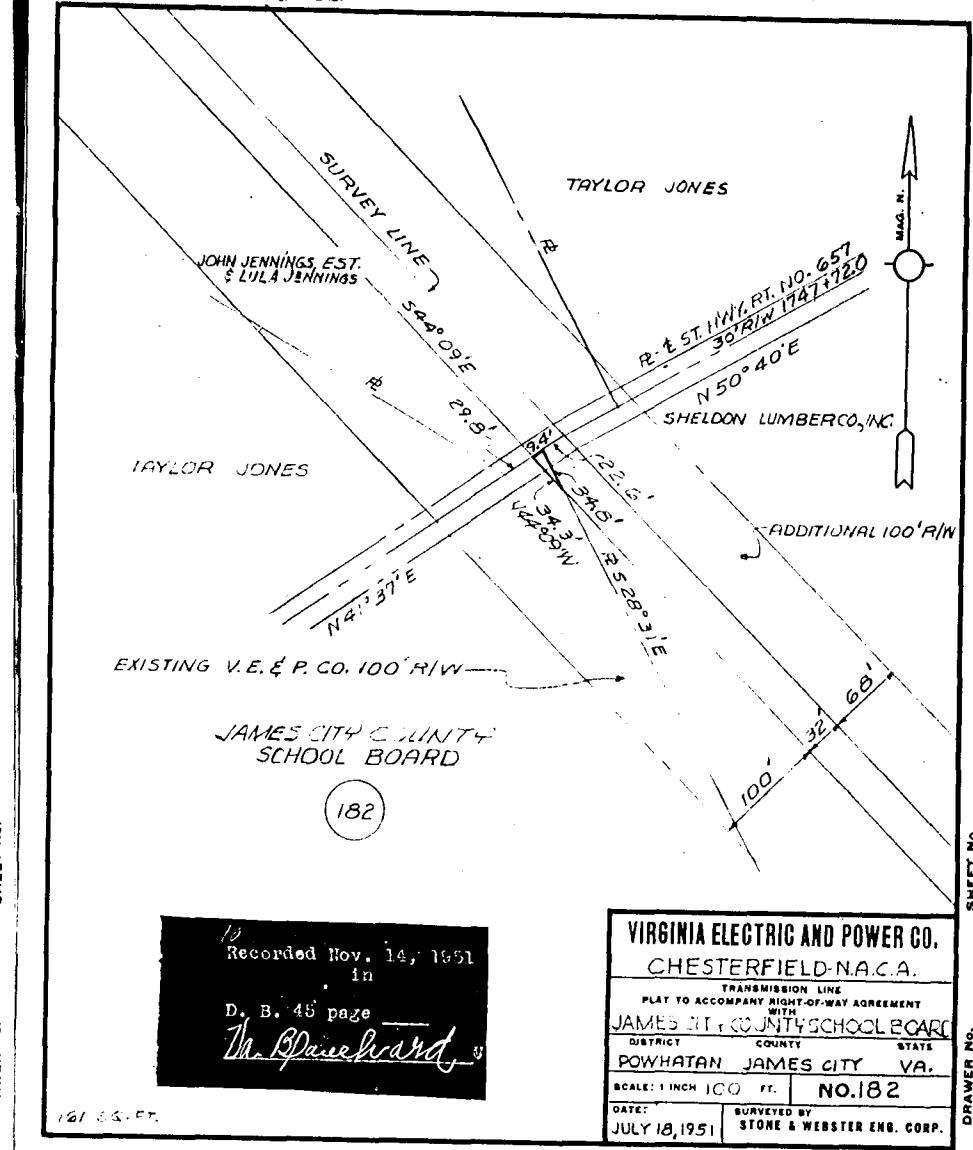


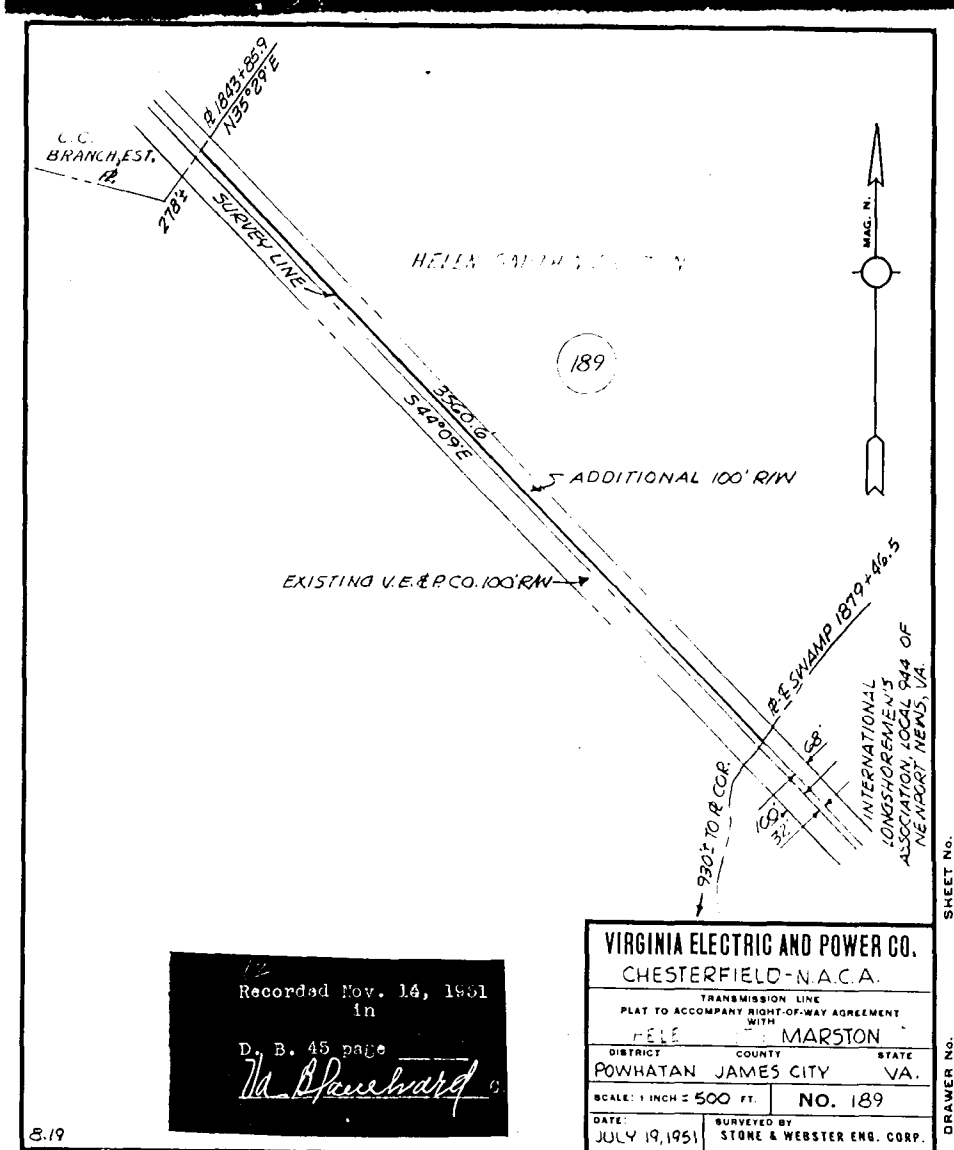
Recorded Nov. 14, 1951  
in  
D. B. 45 page  
*W. Blasehard*

**VIRGINIA ELECTRIC AND POWER CO.**  
CHESTERFIELD-NEWPORT NEWS  
TRANSMISSION LINE  
PLAT TO ACCOMPANY RIGHT-OF-WAY AGREEMENT  
WITH  
JOHN JENNINGS EST. & LULA TINSLEY BERLEY  
DISTRICT COUNTY STATE  
POWhatan JAMES CITY VA.  
SCALE: 1 INCH = 100 FT. NO. 44X  
DATE: MAY 1, 1951 SURVEYED BY  
STONE & WEBSTER ENG. CORP.



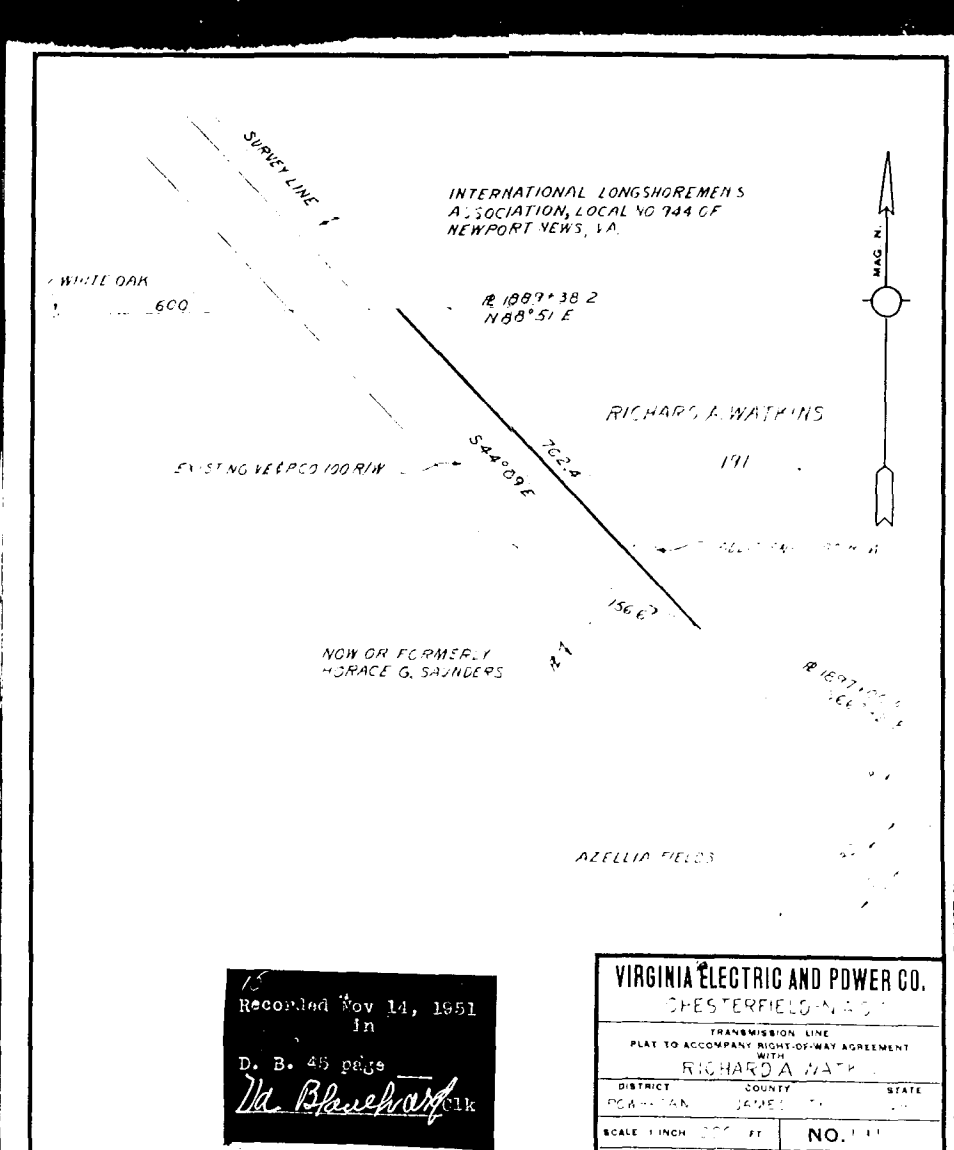
Recorded Nov. 14, 1951  
in  
D. B. 45 page  
*W. Blasehard*

**VIRGINIA ELECTRIC AND POWER CO.**  
CHESTERFIELD-N.A.C.A.  
TRANSMISSION LINE  
PLAT TO ACCOMPANY RIGHT-OF-WAY AGREEMENT  
WITH  
JAMES CITY COUNTY SCHOOL BOARD  
DISTRICT COUNTY STATE  
POWhatan JAMES CITY VA.  
SCALE: 1 INCH = 100 FT. NO. 182  
DATE: JULY 18, 1951 SURVEYED BY  
STONE & WEBSTER ENG. CORP.



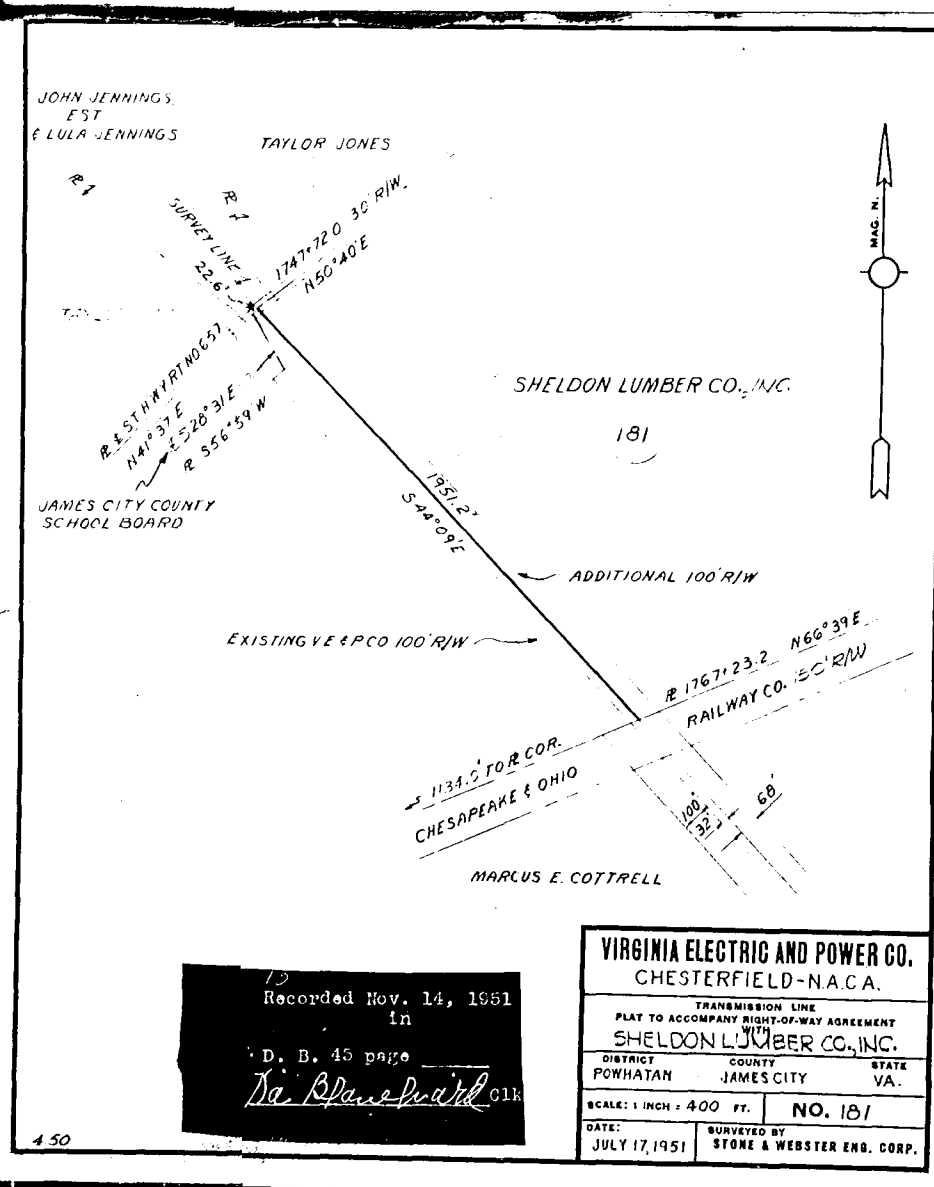
Recorded Nov. 14, 1951  
in  
D. B. 45 page  
*W. Blasehard*

**VIRGINIA ELECTRIC AND POWER CO.**  
CHESTERFIELD-N.A.C.A.  
TRANSMISSION LINE  
PLAT TO ACCOMPANY RIGHT-OF-WAY AGREEMENT  
WITH  
HELLA CAIN  
DISTRICT COUNTY STATE  
POWhatan JAMES CITY VA.  
SCALE: 1 INCH = 500 FT. NO. 189  
DATE: JULY 19, 1951 SURVEYED BY  
STONE & WEBSTER ENG. CORP.



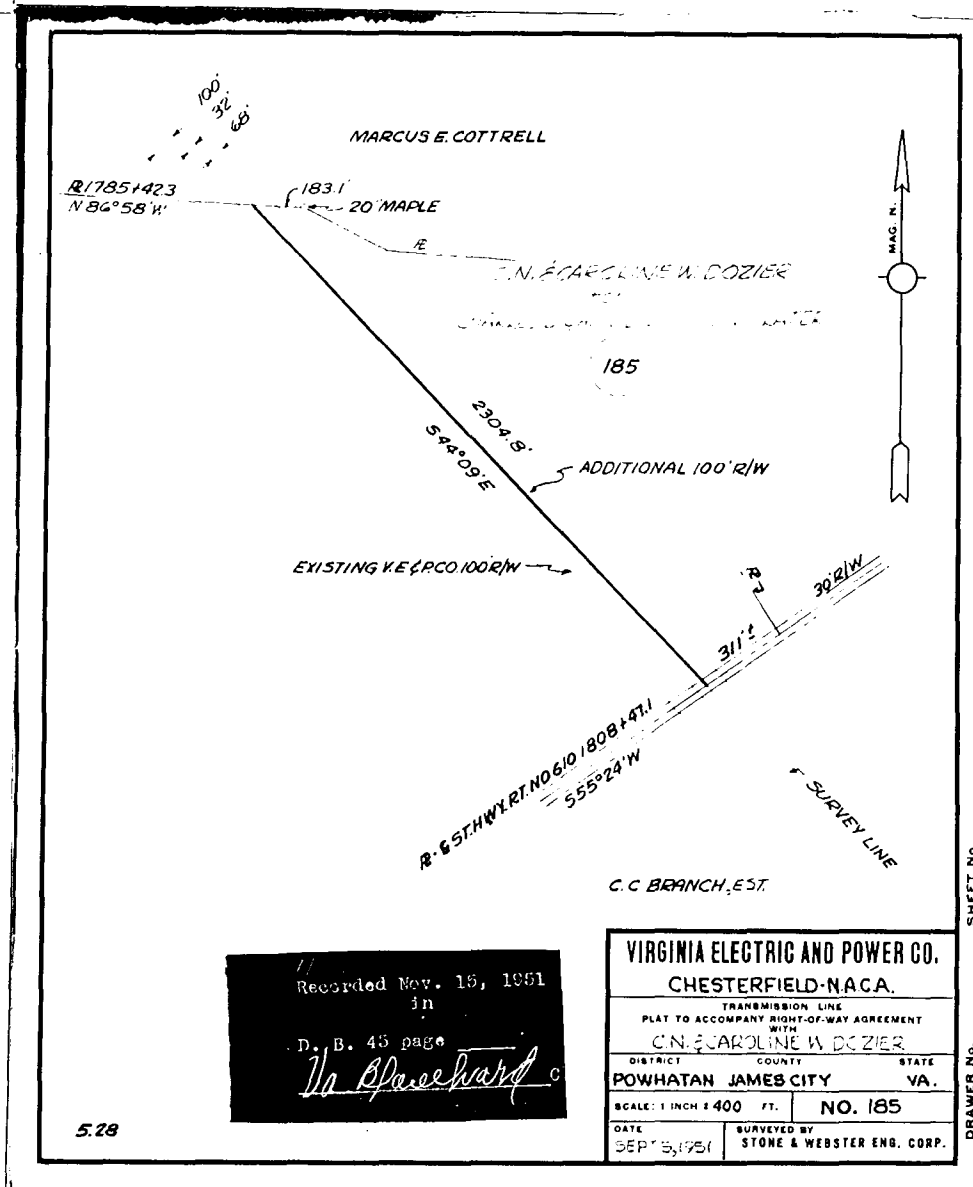
Recorded Nov. 14, 1951  
in  
D. B. 45 page  
*W. Blasehard*

**VIRGINIA ELECTRIC AND POWER CO.**  
CHESTERFIELD-N.A.C.A.  
TRANSMISSION LINE  
PLAT TO ACCOMPANY RIGHT-OF-WAY AGREEMENT  
WITH  
RICHARD A. WATKINS  
DISTRICT COUNTY STATE  
POWhatan JAMES CITY VA.  
SCALE: 1 INCH = 100 FT. NO. 187  
DATE: SURVEYED BY  
STONE & WEBSTER ENG. CORP.



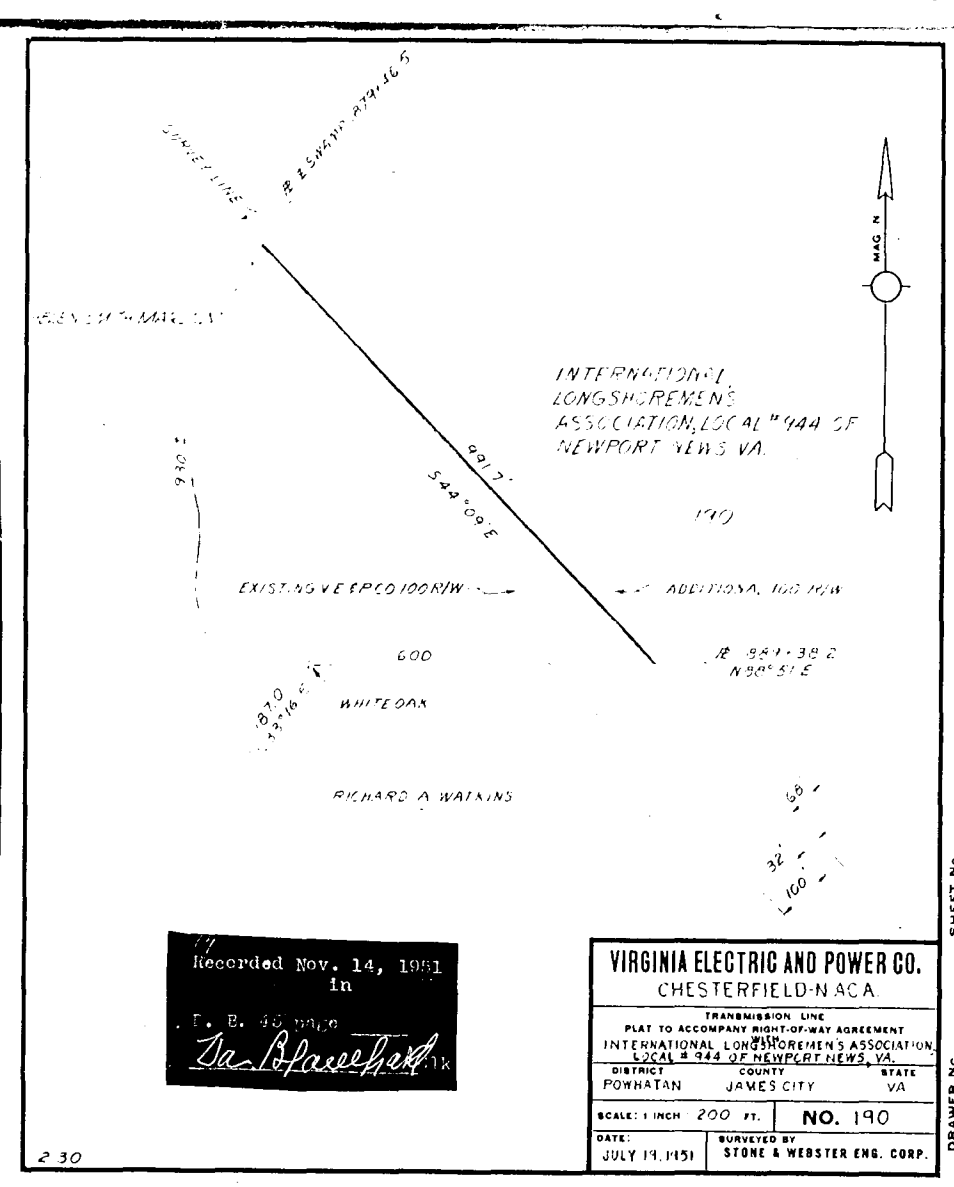
Recorded Nov. 14, 1951  
in  
D. B. 45 page  
*W. Blasehard*

**VIRGINIA ELECTRIC AND POWER CO.**  
CHESTERFIELD-N.A.C.A.  
TRANSMISSION LINE  
PLAT TO ACCOMPANY RIGHT-OF-WAY AGREEMENT  
WITH  
SHELDON LUMBER CO., INC.  
DISTRICT COUNTY STATE  
POWhatan JAMES CITY VA.  
SCALE: 1 INCH = 400 FT. NO. 181  
DATE: JULY 17, 1951 SURVEYED BY  
STONE & WEBSTER ENG. CORP.



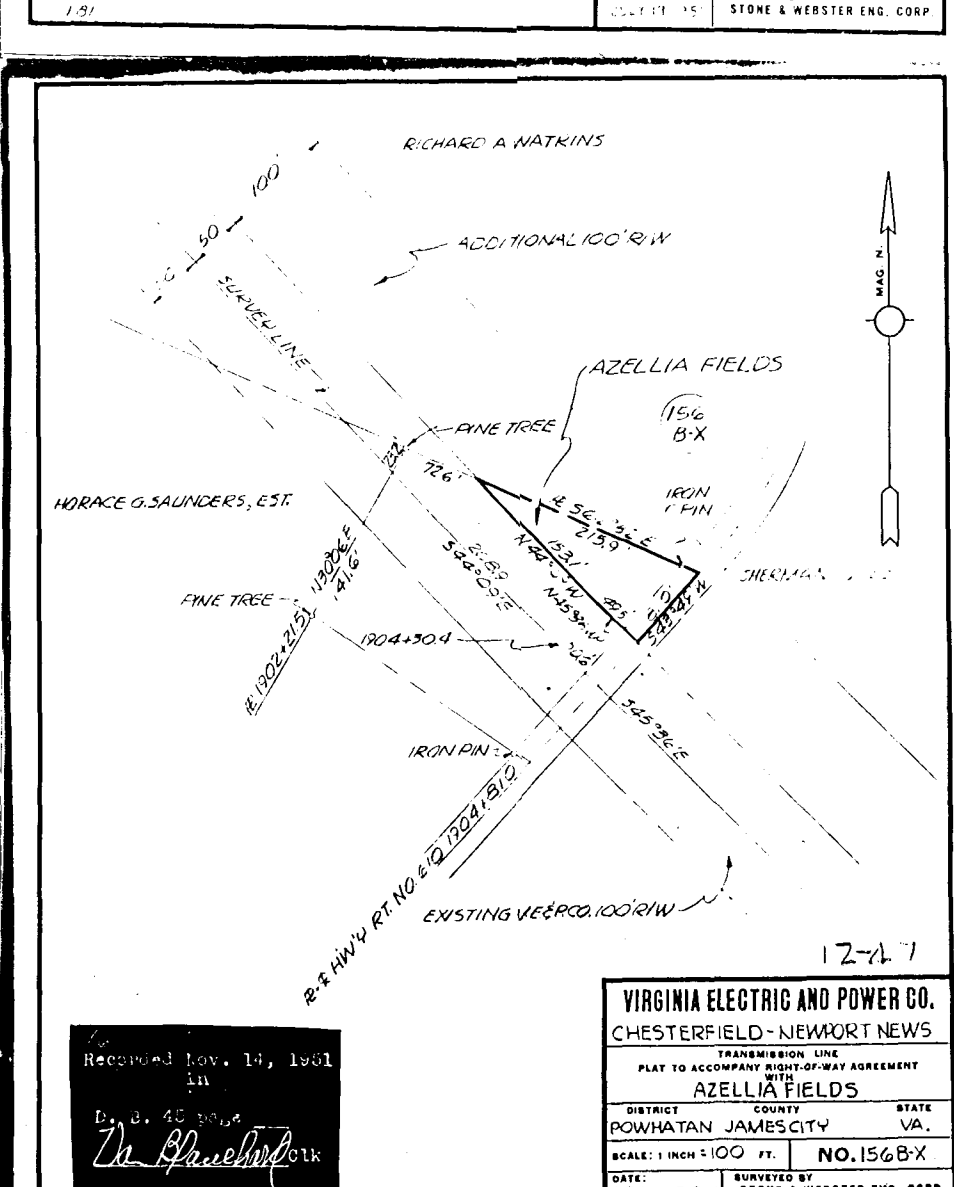
Recorded Nov. 15, 1951  
in  
D. B. 45 page  
*W. Blasehard*

**VIRGINIA ELECTRIC AND POWER CO.**  
CHESTERFIELD-N.A.C.A.  
TRANSMISSION LINE  
PLAT TO ACCOMPANY RIGHT-OF-WAY AGREEMENT  
WITH  
CAROLINE W. DOZIER  
DISTRICT COUNTY STATE  
POWhatan JAMES CITY VA.  
SCALE: 1 INCH = 400 FT. NO. 185  
DATE: SEP 5, 1951 SURVEYED BY  
STONE & WEBSTER ENG. CORP.



Recorded Nov. 14, 1951  
in  
D. B. 45 page  
*W. Blasehard*

**VIRGINIA ELECTRIC AND POWER CO.**  
CHESTERFIELD-N.A.C.A.  
TRANSMISSION LINE  
PLAT TO ACCOMPANY RIGHT-OF-WAY AGREEMENT  
WITH  
INTERNATIONAL LONGSHOREMEN'S ASSOCIATION, LOCAL NO. 944 OF NEWPORT NEWS, VA.  
DISTRICT COUNTY STATE  
POWhatan JAMES CITY VA.  
SCALE: 1 INCH = 200 FT. NO. 190  
DATE: JULY 19, 1951 SURVEYED BY  
STONE & WEBSTER ENG. CORP.



Recorded Nov. 14, 1951  
in  
D. B. 45 page  
*W. Blasehard*

**VIRGINIA ELECTRIC AND POWER CO.**  
CHESTERFIELD-NEWPORT NEWS  
TRANSMISSION LINE  
PLAT TO ACCOMPANY RIGHT-OF-WAY AGREEMENT  
WITH  
AZELLIA FIELDS  
DISTRICT COUNTY STATE  
POWhatan JAMES CITY VA.  
SCALE: 1 INCH = 100 FT. NO. 156B-X  
DATE: APRIL 25, 1951 SURVEYED BY  
STONE & WEBSTER ENG. CORP.