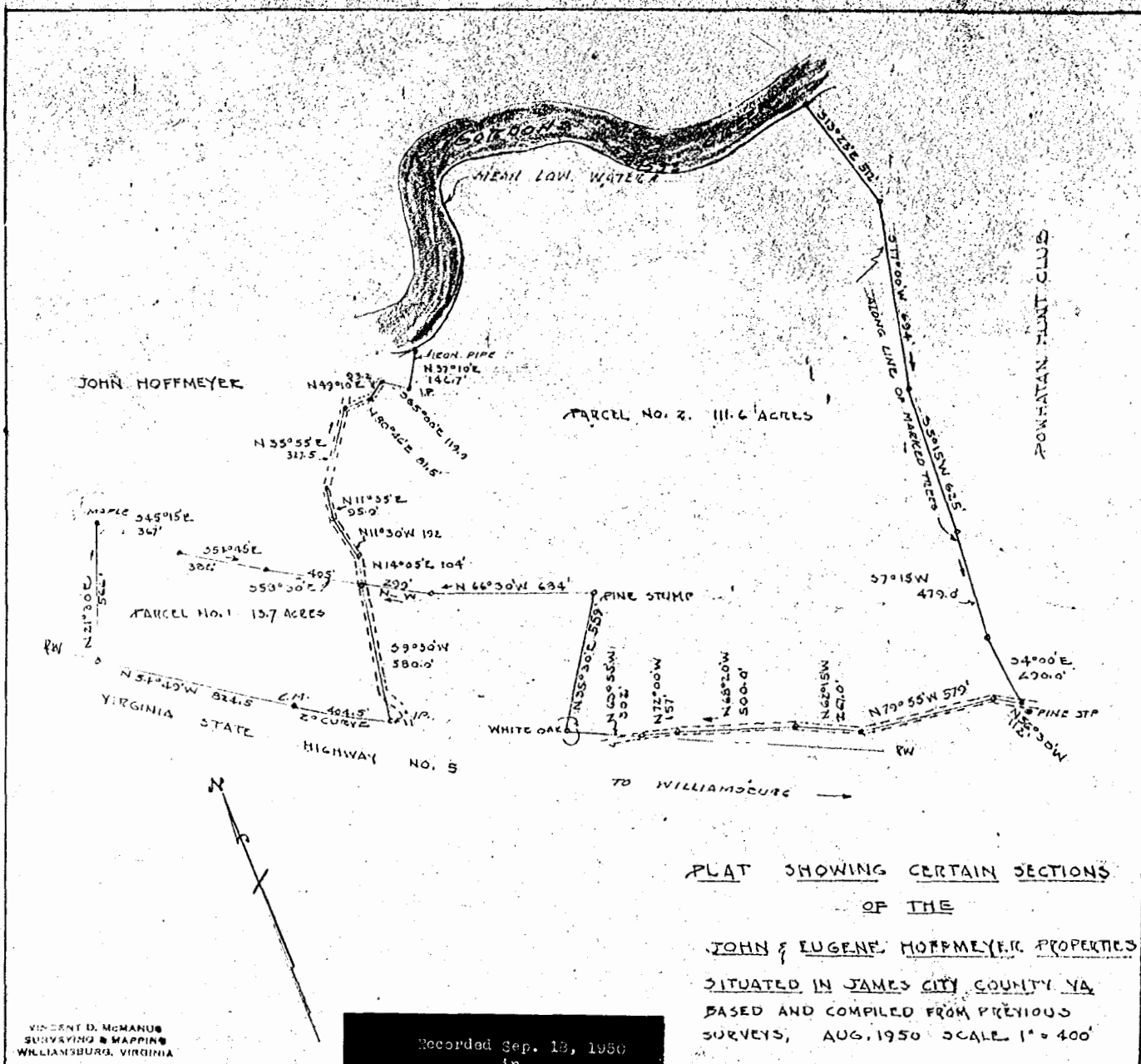


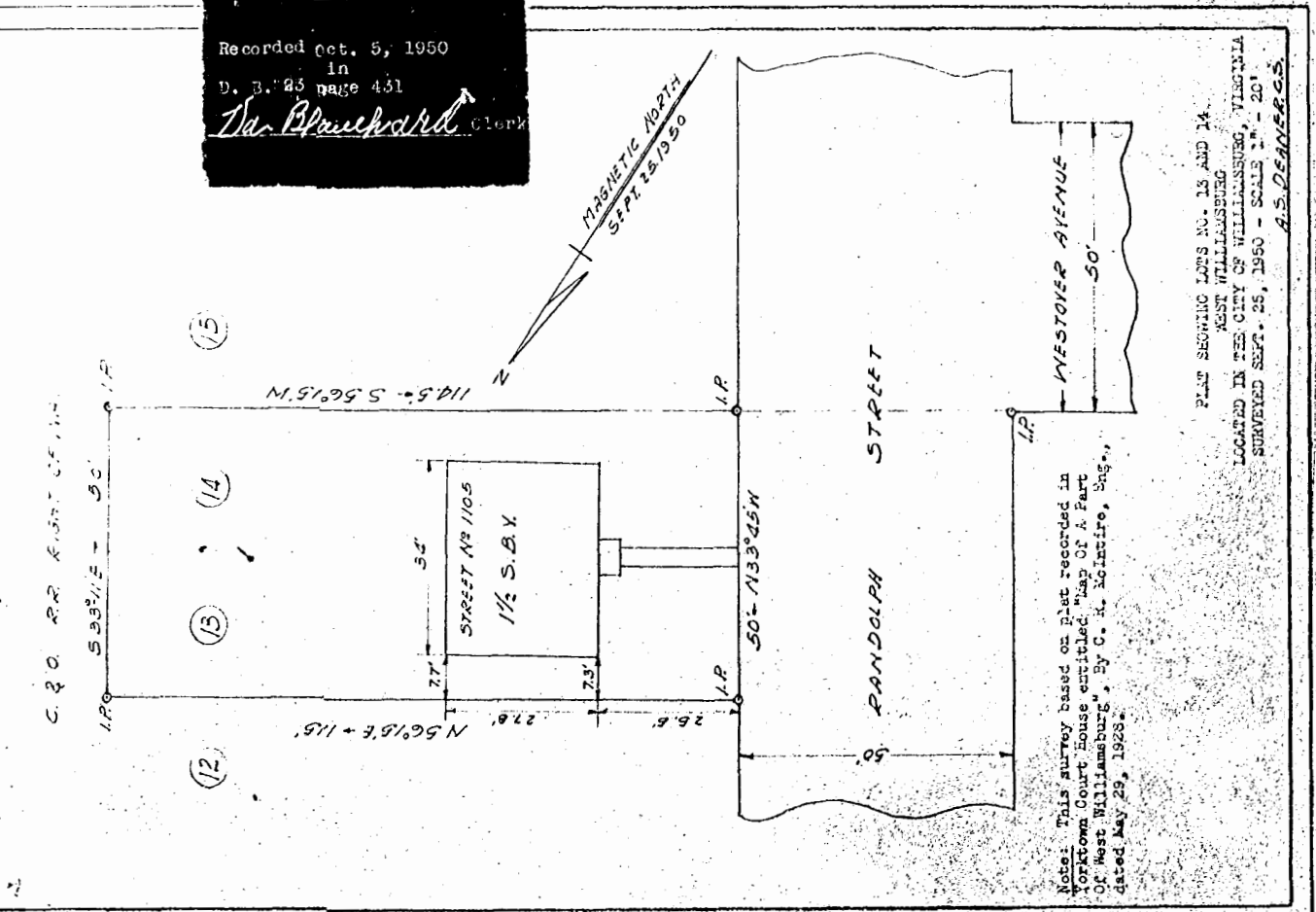
Recorded Sep. 13, 1950  
 in  
 City P. B. 23 page  
*The Blanchard* Clerk

Recorded Oct. 5, 1950  
 in  
 City P. B. 23 page 431  
*The Blanchard* Clerk



PLAT SHOWING CERTAIN SECTIONS  
 OF THE  
 JOHN & EUGENE HOFFMEYER PROPERTIES  
 SITUATED IN JAMES CITY COUNTY VA  
 BASED AND COMPILED FROM PREVIOUS  
 SURVEYS, AUG. 1950 SCALE 1" = 400'

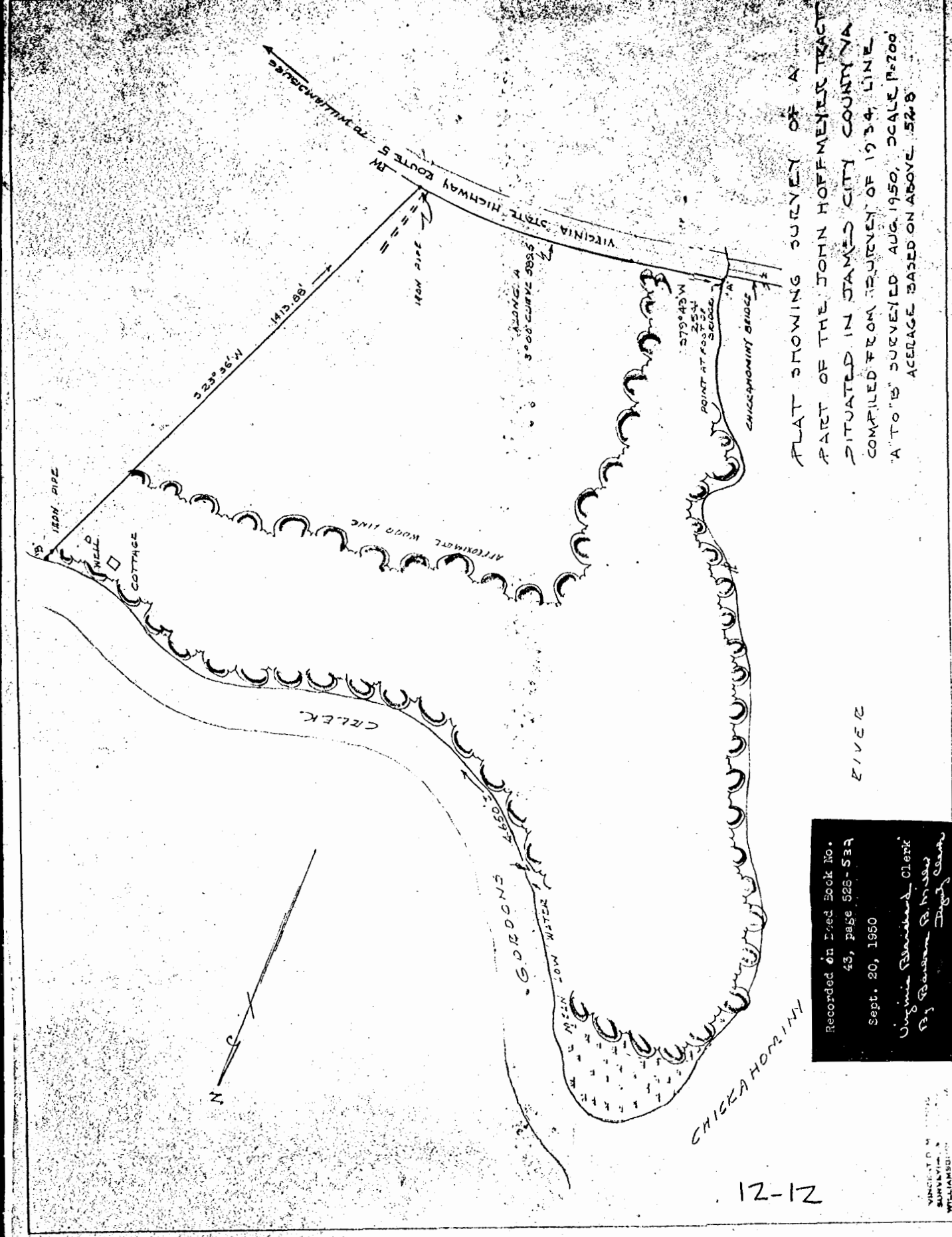
Recorded Sep. 13, 1950  
 in  
 City P. B. 43 page  
*The Blanchard* Clerk



Recorded Oct. 5, 1950  
 in  
 City P. B. 23 page 431  
*The Blanchard* Clerk

Note: This survey based on plat recorded in  
 Yorktown Court House entitled "Map of A Part  
 Of West Williamsburg" By C. H. McIntire, Eng.,  
 dated May 29, 1928.

PLAT SHOWING LOTS NO. 13 AND 14  
 WEST WILLIAMSBURG, VIRGINIA  
 LOCATED IN THE CITY OF WILLIAMSBURG, VIRGINIA  
 SURVEYED SEP. 25, 1950 - SCALE 1" = 20'



PLAT SHOWING SURVEY OF A  
 PART OF THE JOHN HOFFMEYER TRACT  
 SITUATED IN JAMES CITY COUNTY VA  
 COMPILED FROM SURVEY OF 1934 LINE  
 'A TO 'B' SURVEYED AUG. 1950. SCALE 1" = 700'  
 ACERAGE BASED ON ABOVE 52.8

Recorded in Exec Book No.  
 43, page 528-531  
 Sept. 20, 1950  
 Virginia Landmark Clerk  
 P. J. Bowen, P. M. W. J. W. C. W.