

Sketch Showing
Property To Be Conveyed

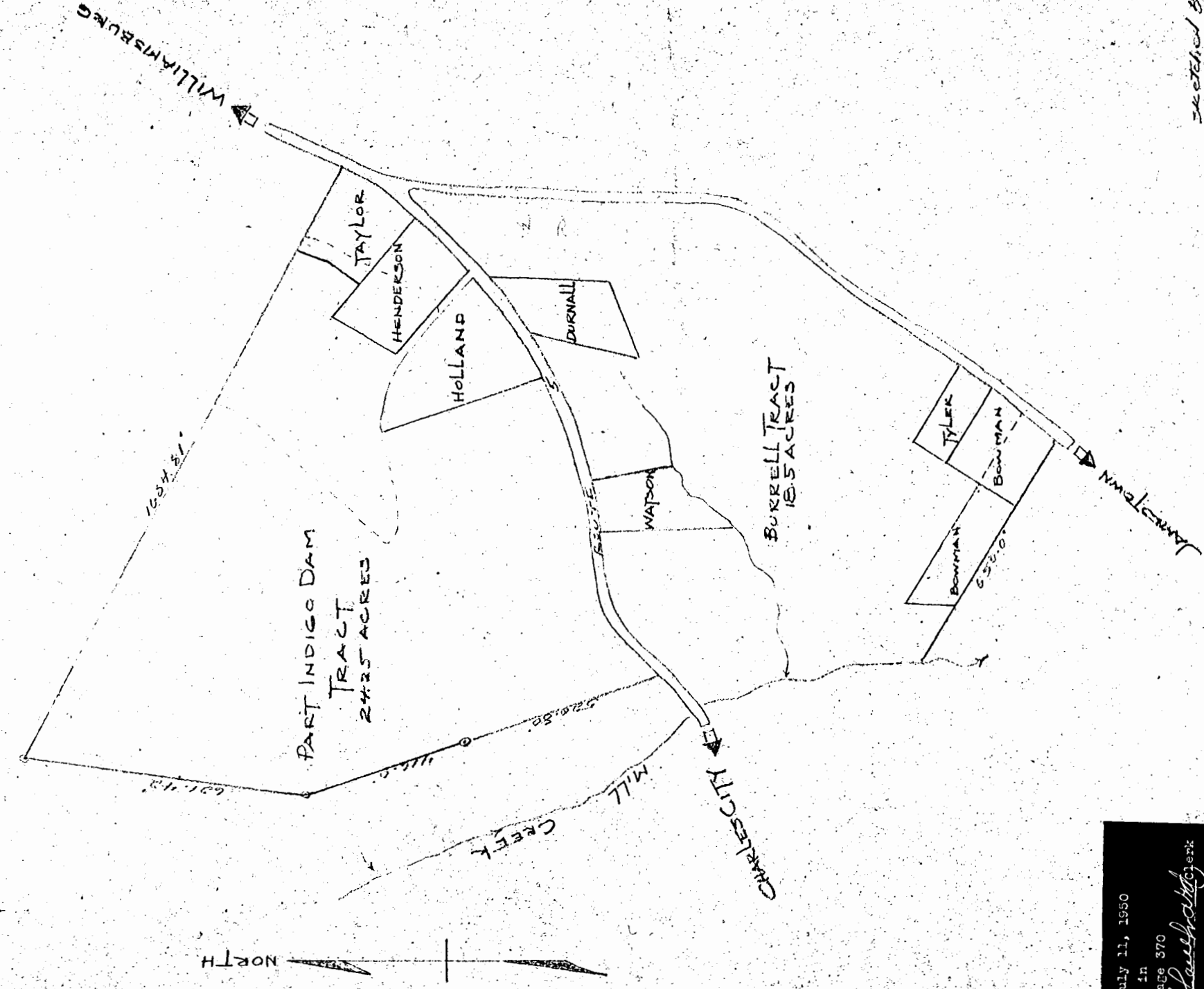
To

T.B. Henderson Jr. By T.B. Henderson
Jamesstown Dist., James City County

Approximate Location of Properties

Conveyed To Others

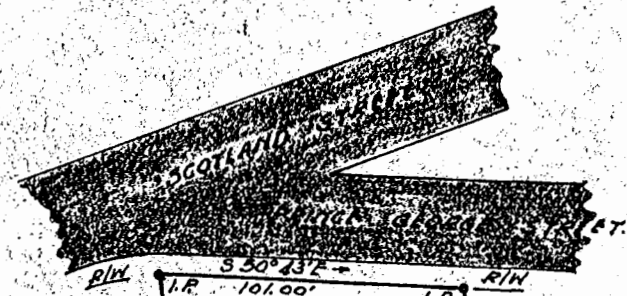
Scale 1" = 200'



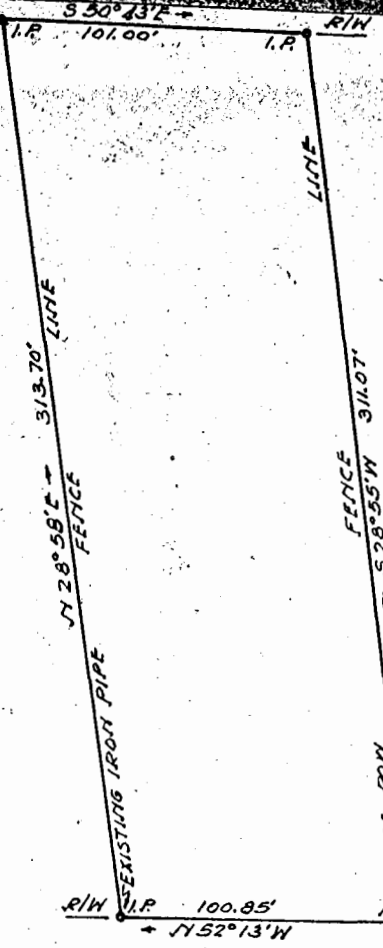
Recorded July 11, 1950

in
D. B. 43 page 370

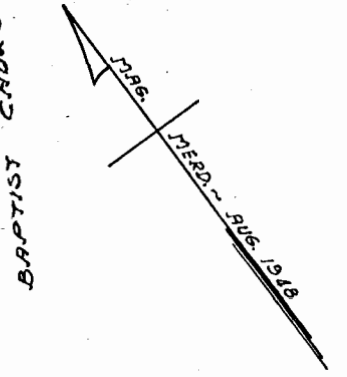
The Blawie Clerk



HUGH F. SUTTON.



Recorded July 27, 1950
in
D. B. 23 page 248
The Blawie Clerk



NOTE ~
LINES ARE OCCUPATIONAL.

TO BOUNDARY ST. ~
RICHMOND ROAD

PLAT SHOWING PROPERTY SURVEYED FOR
~ ANGELO COSTAS & TOM BALTAS ~
LOCATED IN THE CITY OF WILLIAMSBURG, VIRGINIA.
SURVEYED - SEPT. - 1948 A.S. DEANER, C.S. SCALE 1" = 40'

12-9