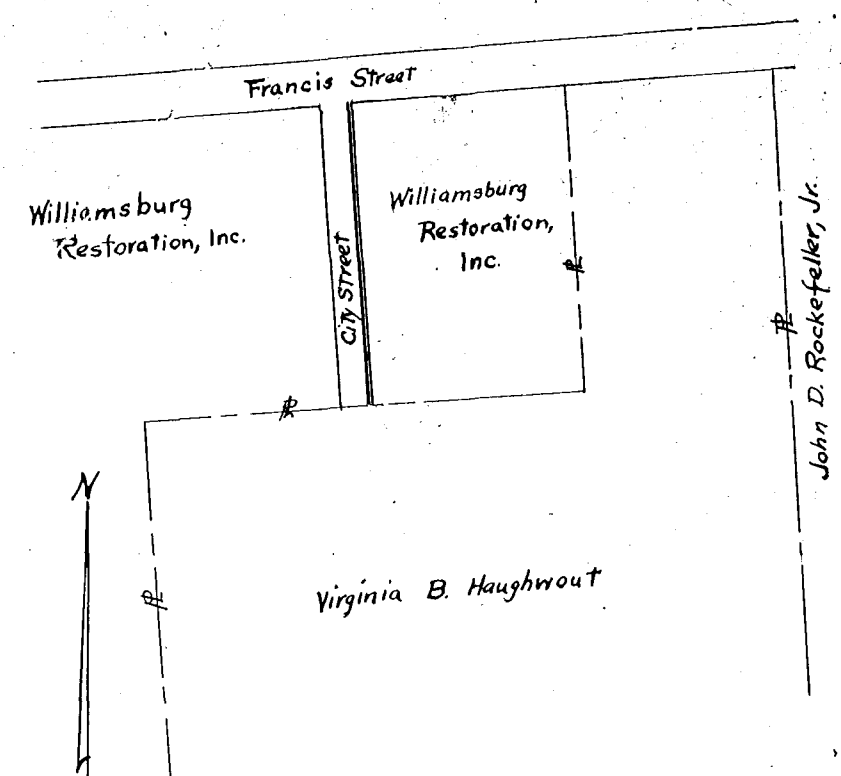


RECORDED FORM NO. 13
 VIRGINIA ELECTRIC AND POWER COMPANY
 PLAT TO ACCOMPANY RIGHT-OF-WAY AGREEMENT

PENINSULA DISTRICT
 DISTRICT COUNTY STATE
 CITY OF WILLIAMSBURG VIRGINIA
 WILLIAMSBURG OFFICE NO. R/W-70
 1947 CJD

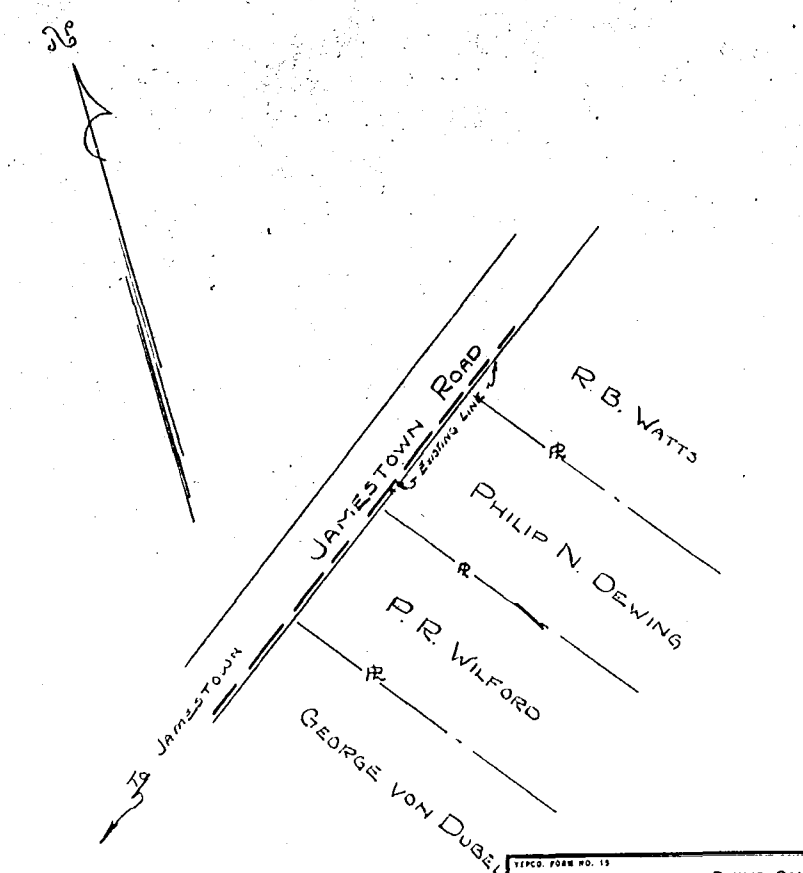
Recorded Dec 17, 1947
 in
 D. B. 21 page 288
Wm. Blanchard Clerk



RECORDED FORM NO. 13
 VIRGINIA ELECTRIC AND POWER COMPANY
 PLAT TO ACCOMPANY RIGHT-OF-WAY AGREEMENT

PENINSULA DISTRICT
 DISTRICT COUNTY STATE
 City of Williamsburg, Virginia VIRGINIA
 Williamsburg OFFICE NO. R/W 69
 1947 CJD

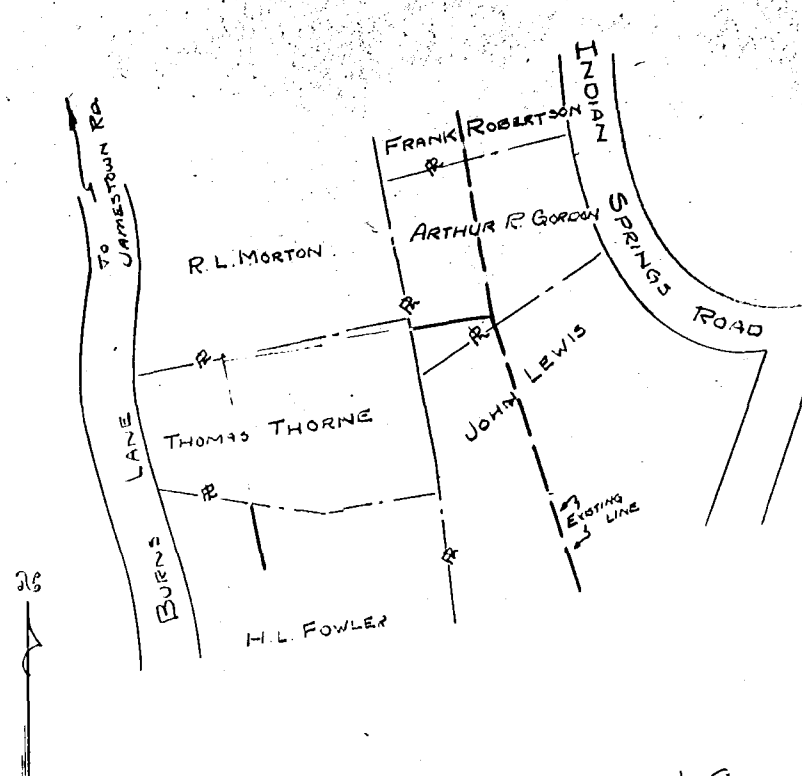
Recorded Dec 17, 1947
 in
 D. B. 21 page 285
Wm. Blanchard Clerk



RECORDED FORM NO. 13
 VIRGINIA ELECTRIC AND POWER COMPANY
 PLAT TO ACCOMPANY RIGHT-OF-WAY AGREEMENT

PENINSULA DISTRICT
 DISTRICT COUNTY STATE
 CITY OF WILLIAMSBURG VIRGINIA
 WILLIAMSBURG OFFICE NO. R/W 71
 1947 CJD

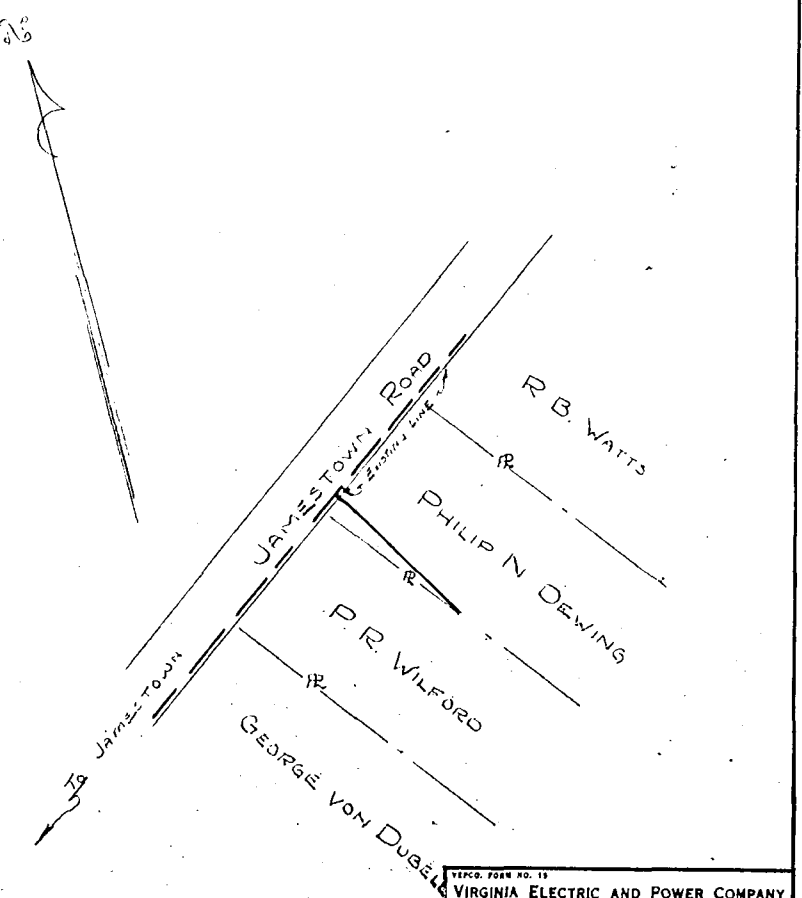
Recorded Dec. 17, 1947
 in
 D. B. 21 page 283
Wm. Blanchard Clerk



RECORDED FORM NO. 13
 VIRGINIA ELECTRIC AND POWER COMPANY
 PLAT TO ACCOMPANY RIGHT-OF-WAY AGREEMENT

PENINSULA DISTRICT
 DISTRICT COUNTY STATE
 CITY OF WILLIAMSBURG VIRGINIA
 WILLIAMSBURG OFFICE NO. R/W-70
 1947 CJD

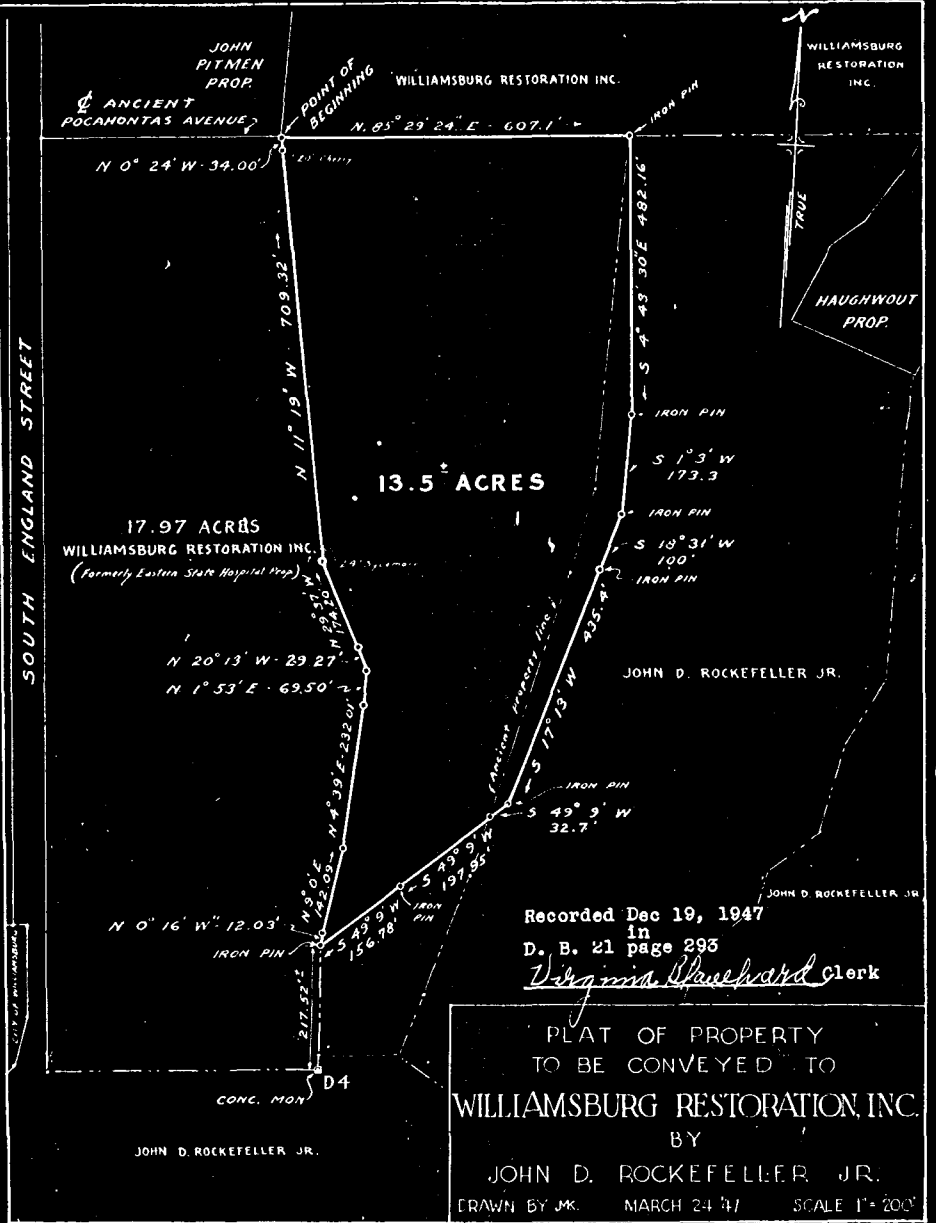
Recorded Dec 17, 1947
 in
 D. B. 21 page 287
Wm. Blanchard Clerk



RECORDED FORM NO. 13
 VIRGINIA ELECTRIC AND POWER COMPANY
 PLAT TO ACCOMPANY RIGHT-OF-WAY AGREEMENT

PENINSULA DISTRICT
 DISTRICT COUNTY STATE
 CITY OF WILLIAMSBURG VIRGINIA
 WILLIAMSBURG OFFICE NO. R/W-71
 1947 CJD

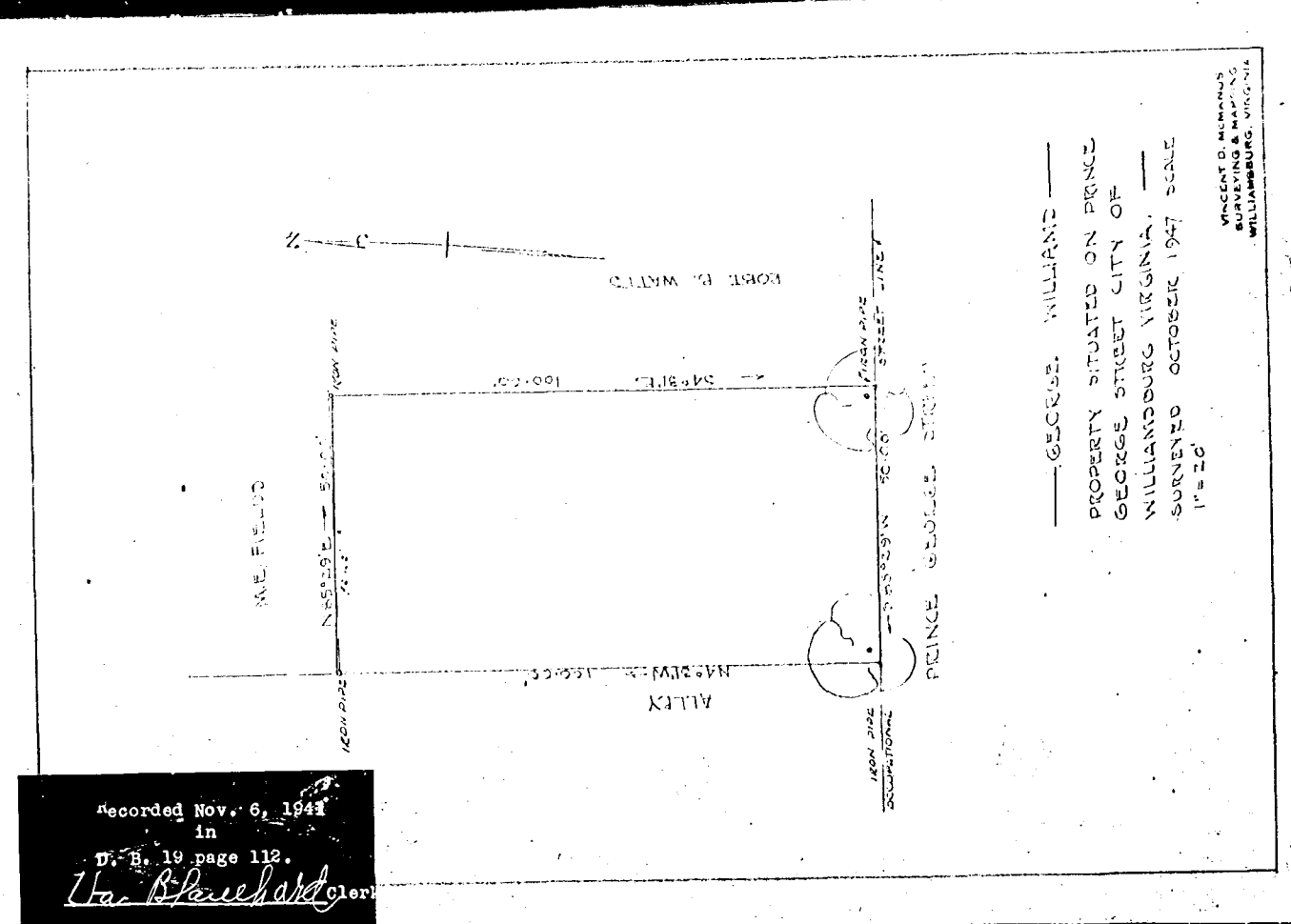
Recorded Dec 17, 1947
 in
 D. B. 21 page 281
Wm. Blanchard Clerk



Recorded Dec 19, 1947
 in
 D. B. 21 page 295
Virginia Blanchard Clerk

PLAT OF PROPERTY
 TO BE CONVEYED TO
WILLIAMSBURG RESTORATION, INC.
 BY
JOHN D. ROCKEFELLER, JR.

DRAWN BY JK. MARCH 24 '47 SCALE 1" = 200'



Recorded Nov. 6, 1947
 in
 D. B. 19 page 112
Wm. Blanchard Clerk

—GEORGE WILLIAMS—
 PROPERTY SITUATED ON PRINCE
 GEORGE STREET CITY OF
 WILLIAMSBURG VIRGINIA.
 — SURVEYED OCTOBER 1947 SCALE
 1" = 20'

VINCENT D. MUMFORD
 SURVEYING & MAPPING
 WILLIAMSBURG, VIRGINIA