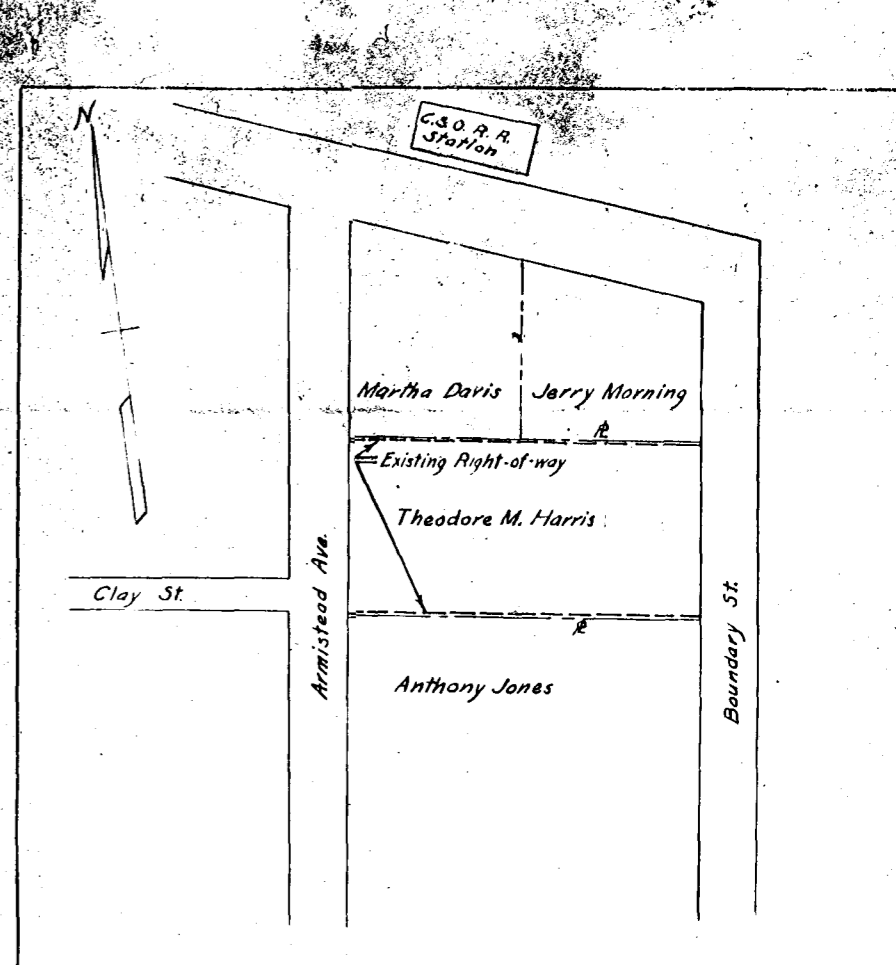


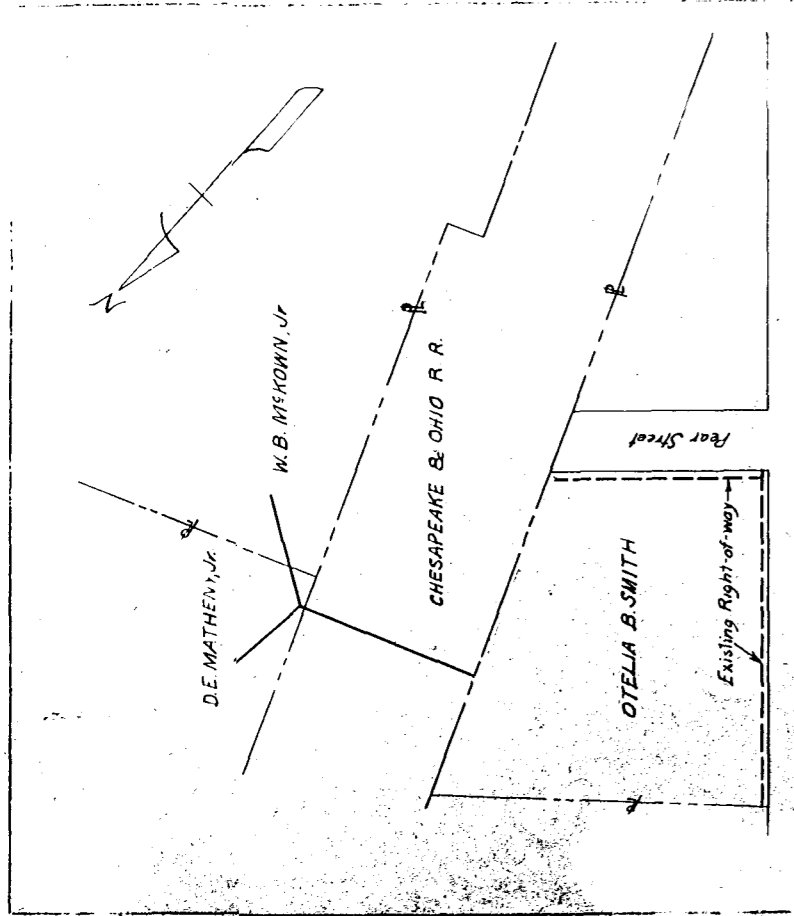
ROGERS COURT
 SUBDIVISION
 SITUATED IN THE CITY OF WILLIAMSBURG
 VIRGINIA -
 SUBDIVIDED AUG. 1942 SCALE 1"=40'
 AREA IS PART OF THE C.L. ROGERS EOT PROPERTY
 BOUNDARY LINED AS DECIDED BY MRS LAURA V. ROGERS
 712 ACRES



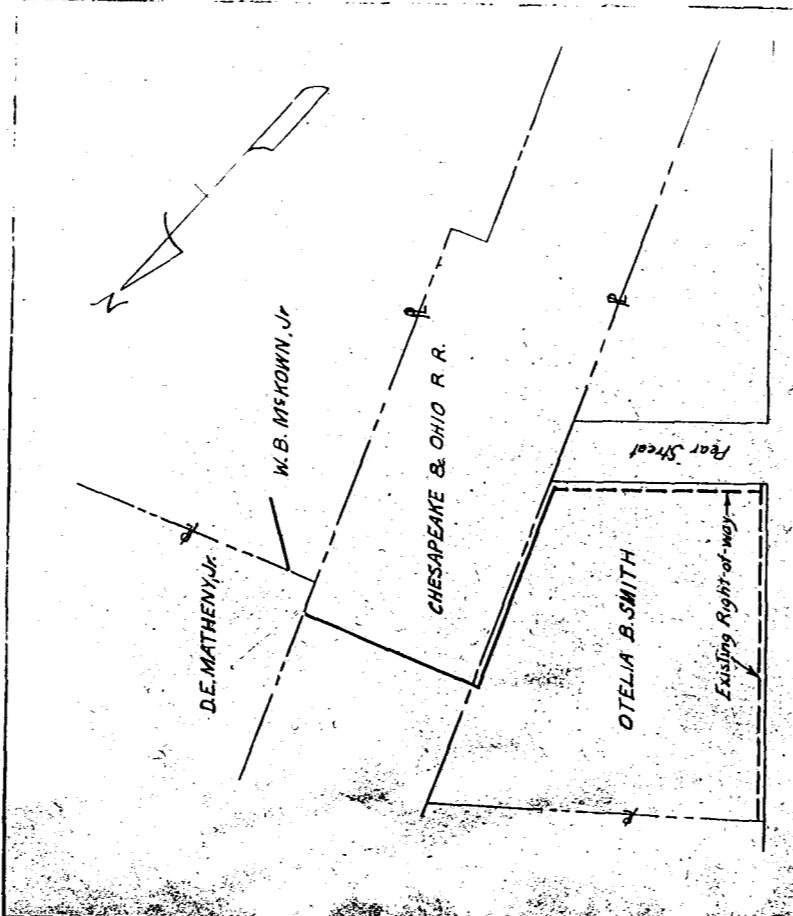
Recorded Sept. 8, 1944
 in
 D. B. 20, pages 51
Va. Blauhardt Clerk

VIRGINIA ELECTRIC & POWER CO.
 WILLIAMSBURG DISTRICT
 AS SHOWN
 DISTRICT COUNTY STATE
 CITY OF WILLIAMSBURG, VIRGINIA
 SCALE: 1"=40' August, 1944
 WMBG #1697

Recorded 9-2-44
 in
 D. B. 20 page 191
Va. Blauhardt Clerk

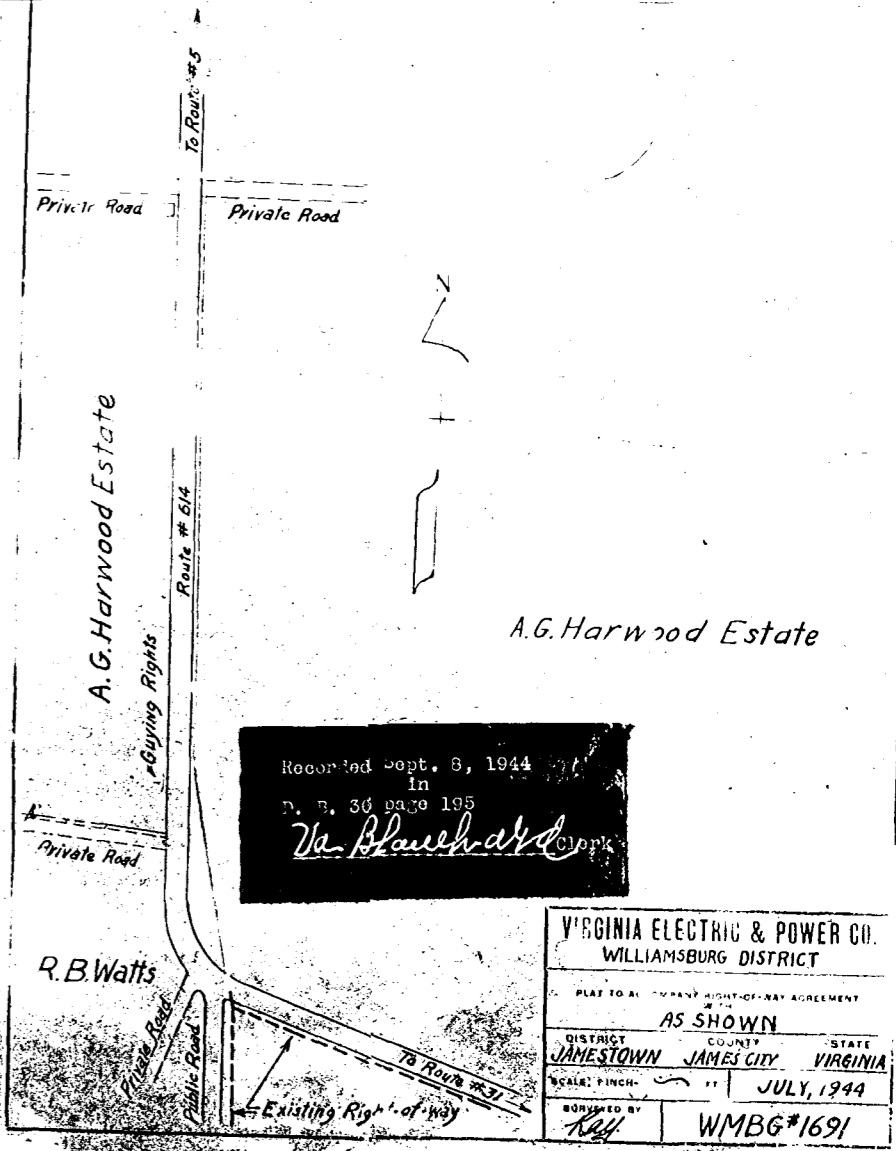


VIRGINIA ELECTRIC & POWER CO.
 WILLIAMSBURG DISTRICT
 AS SHOWN
 DISTRICT COUNTY STATE
 JAMESTOWN JAMES CITY VIRGINIA
 JULY 1944
 WMBG #1695



VIRGINIA ELECTRIC & POWER CO.
 WILLIAMSBURG DISTRICT
 AS SHOWN
 DISTRICT COUNTY STATE
 JAMESTOWN JAMES CITY VIRGINIA
 JULY 1944
 WMBG #1695

Recorded Sept. 8, 1944
 in
 D. B. 20 page 193
Va. Blauhardt Clerk



Recorded Sept. 8, 1944
 in
 D. B. 30 page 193
Va. Blauhardt Clerk

VIRGINIA ELECTRIC & POWER CO.
 WILLIAMSBURG DISTRICT
 AS SHOWN
 DISTRICT COUNTY STATE
 JAMESTOWN JAMES CITY VIRGINIA
 SCALE: 1"=40' JULY, 1944
 WMBG #1691

9-47