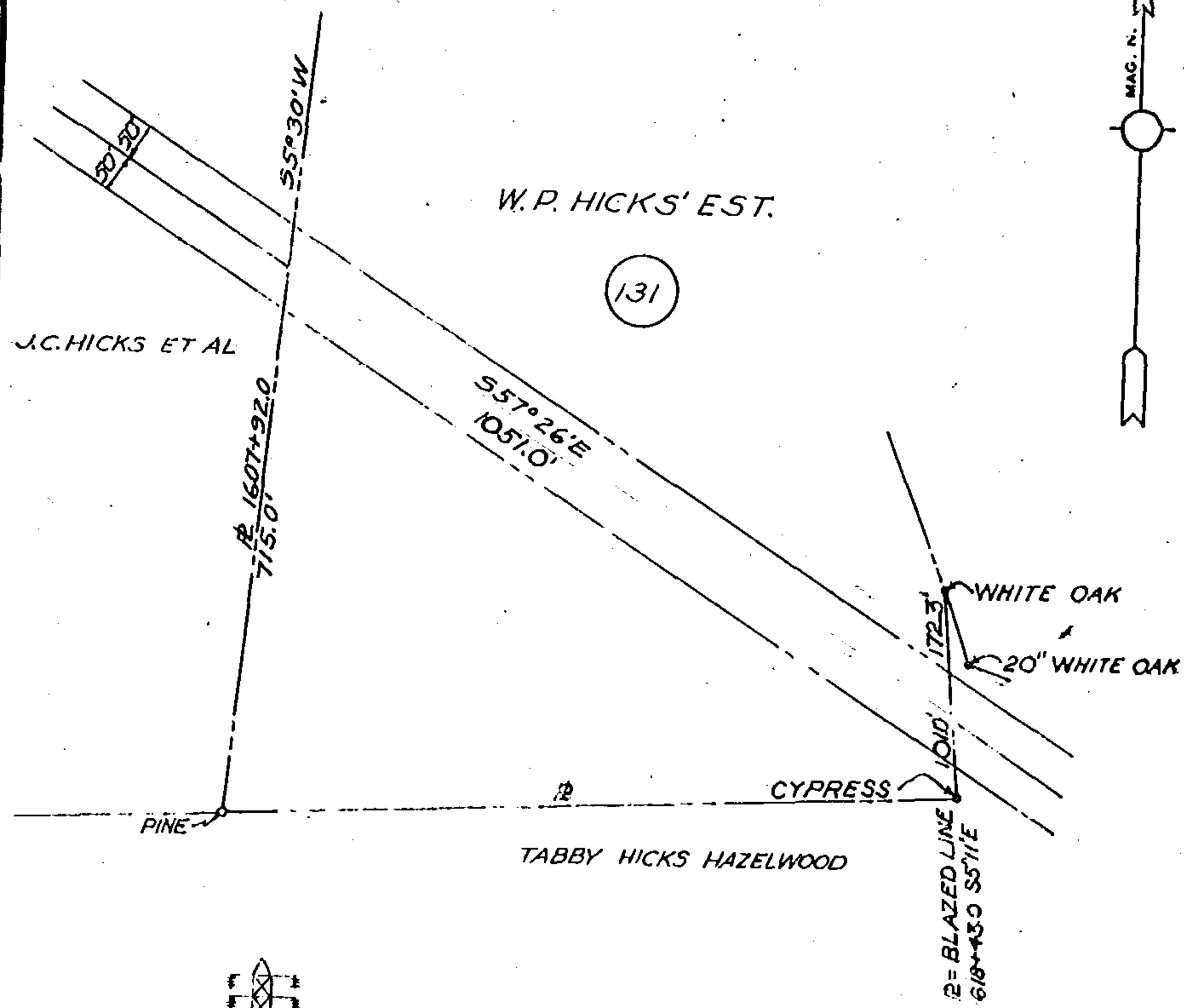
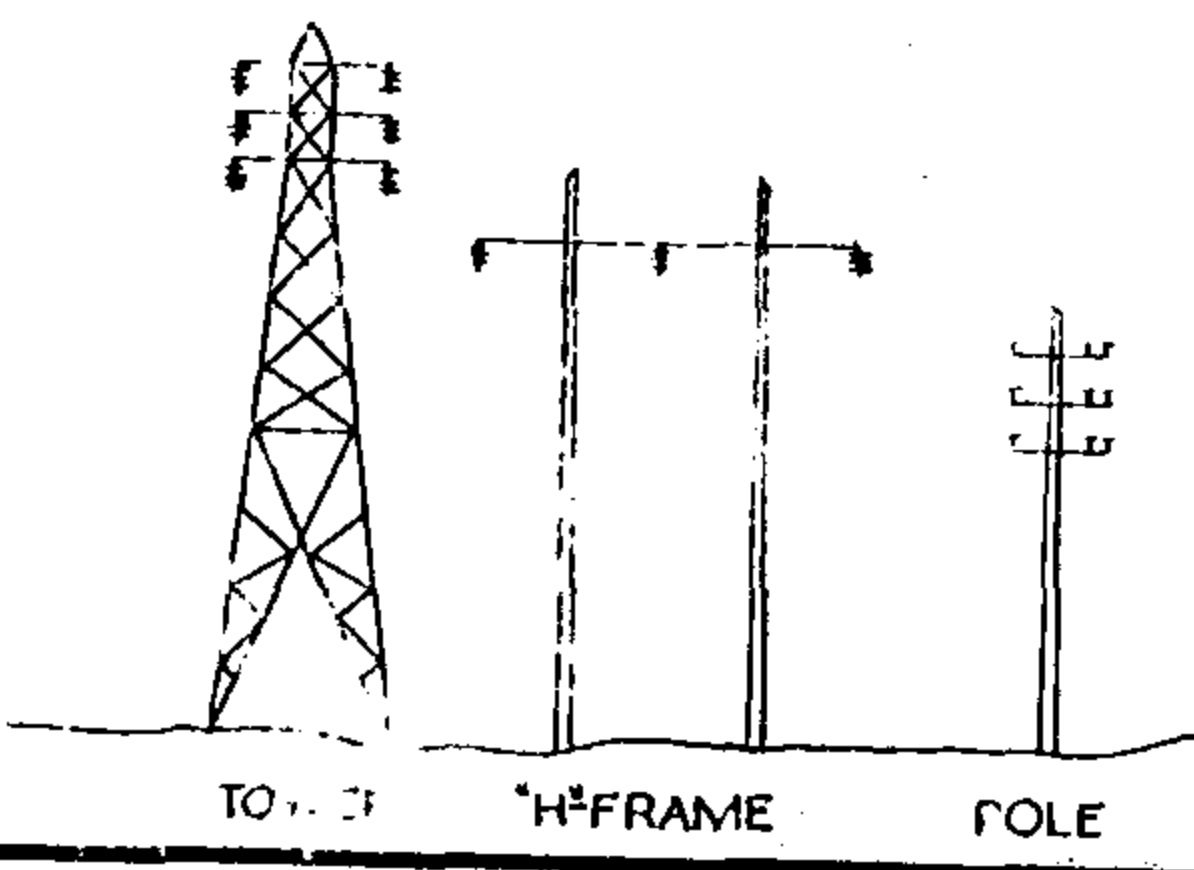


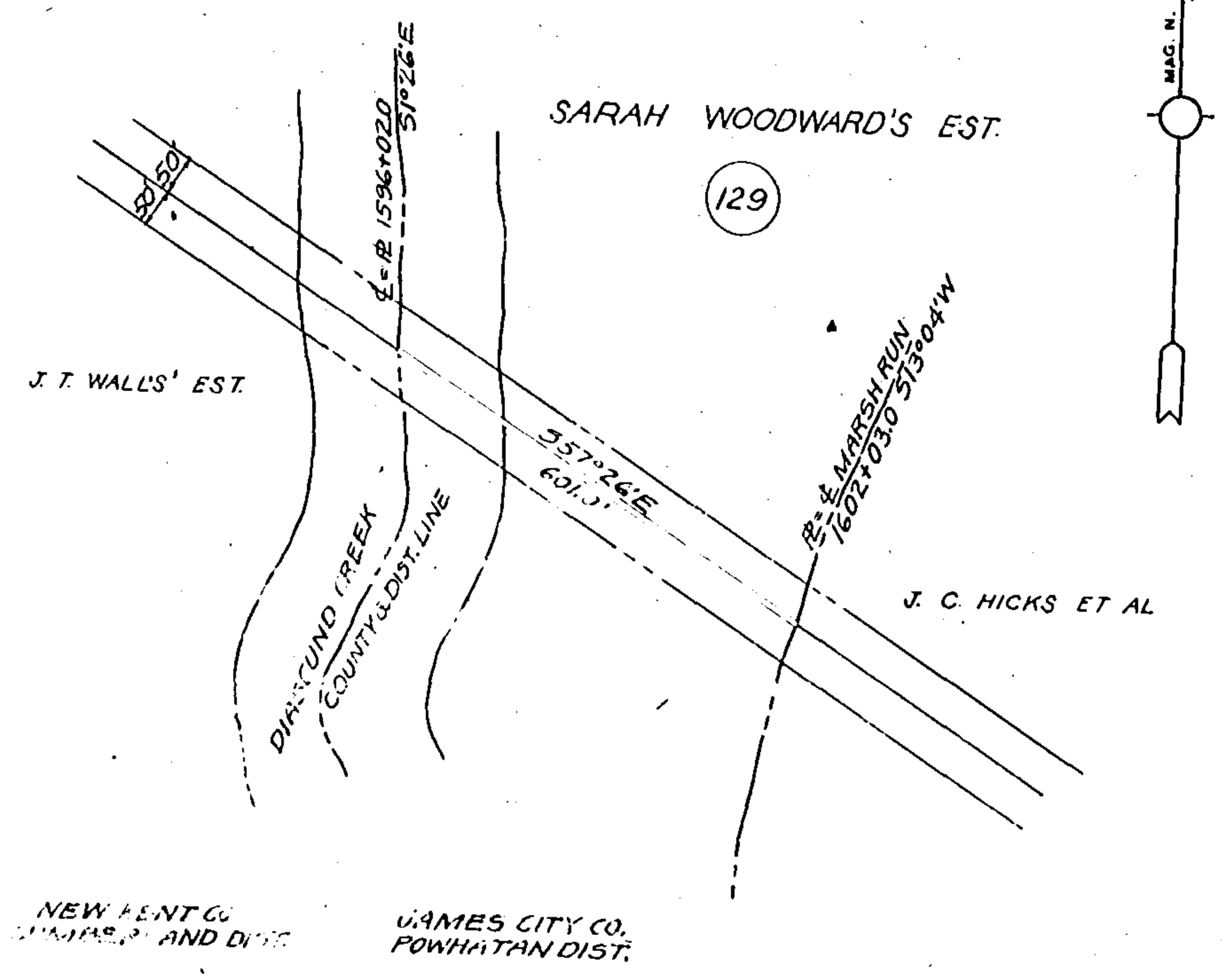
Recorded 3-29-41
in
D. B. 33 p 228
Va. Blanchard Clerk



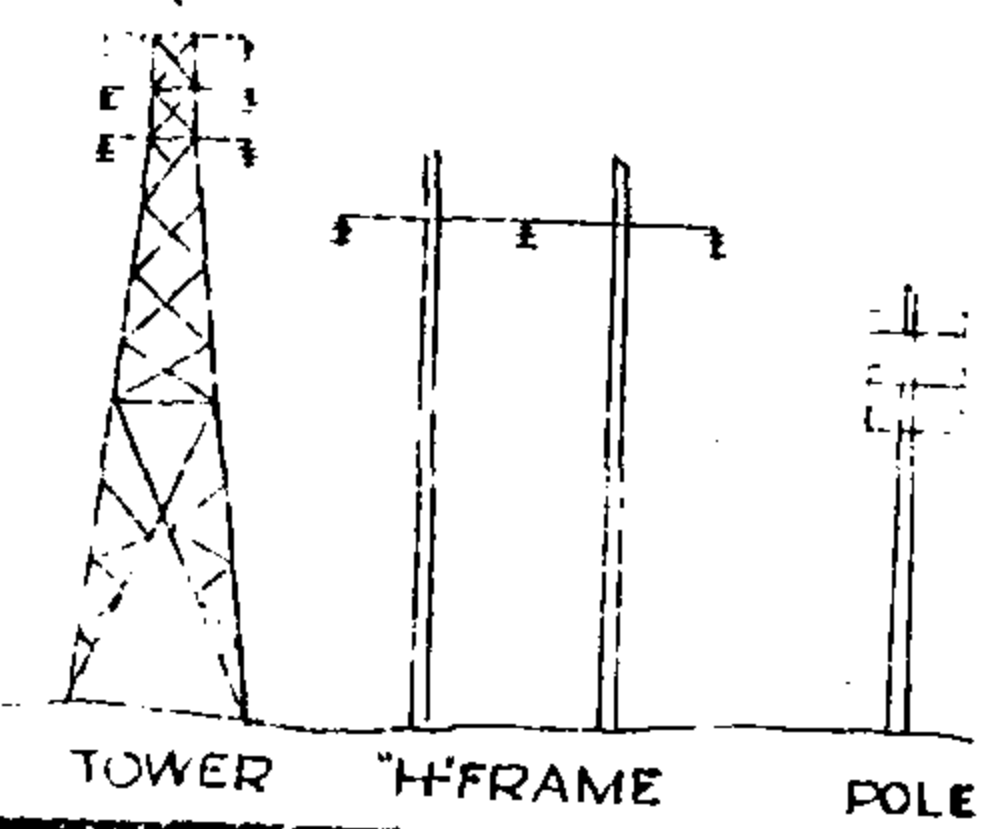
VIRGINIA ELECTRIC & POWER CO.
MESSER ROAD-LEE HALL
TRANSMISSION LINE
PLAT TO ACCOMPANY RIGHT-OF-WAY AGREEMENT
WITH
W. P. HICKS' EST.
DISTRICT: POWHATAN COUNTY: JAMES CITY STATE: VA.
SCALE: 1 INCH = 200 FT. NO. 131
DATE: OCT. 1940 SURVEYED BY: STONE & WEBSTER ENG. CORP.



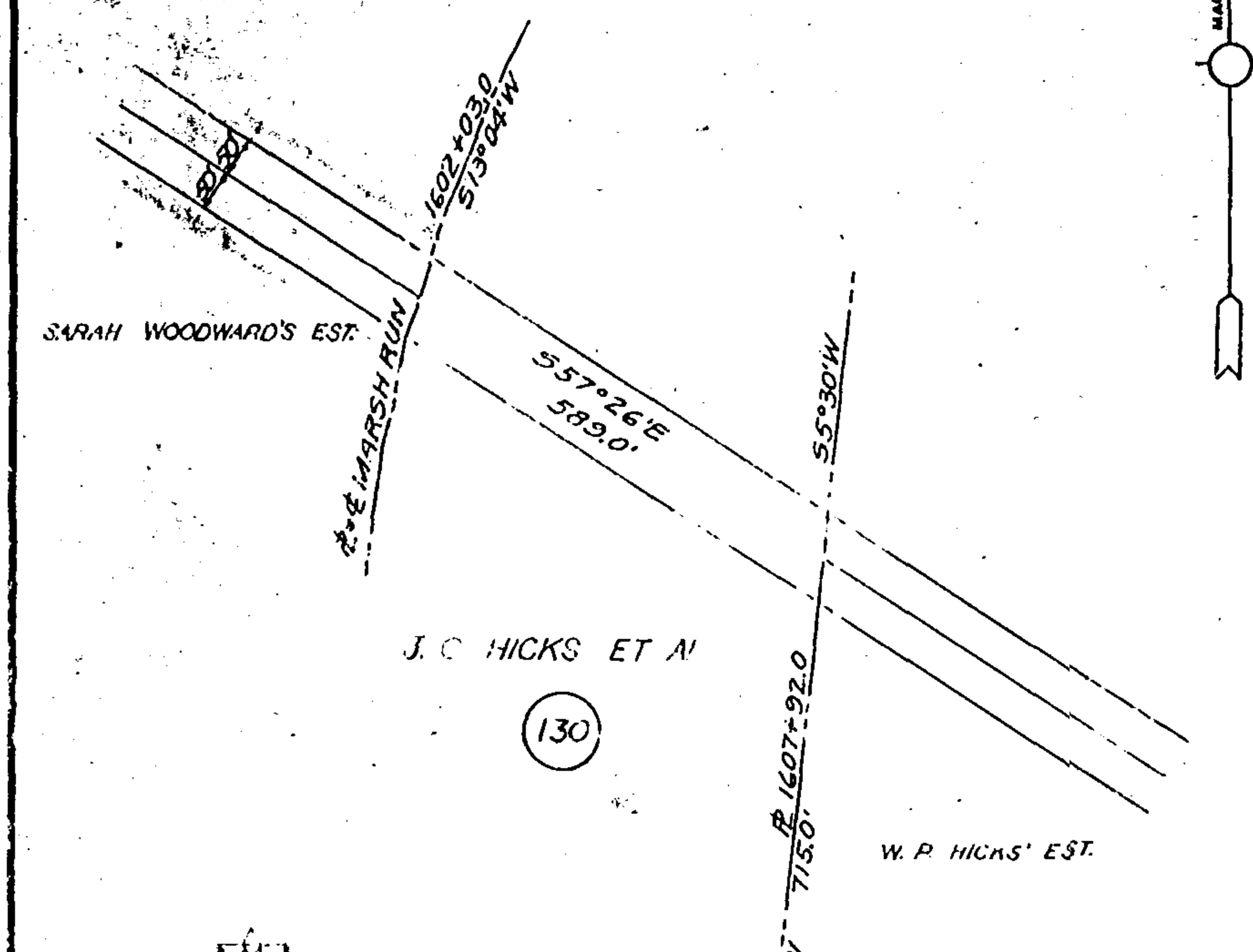
Recorded 3-29-41
in
D. B. 33 p 228
Va. Blanchard Clerk



VIRGINIA ELECTRIC & POWER CO.
MESSER ROAD-LEE HALL
TRANSMISSION LINE
PLAT TO ACCOMPANY RIGHT-OF-WAY AGREEMENT
WITH
SARAH WOODWARD'S EST.
DISTRICT: POWHATAN COUNTY: JAMES CITY STATE: VA.
SCALE: 1 INCH = 200 FT. NO. 129
DATE: OCT. 1940 SURVEYED BY: STONE & WEBSTER ENG. CORP.



Recorded 3-29-41
in
D. B. 33 p 228
Va. Blanchard Clerk



VIRGINIA ELECTRIC & POWER CO.
MESSER ROAD-LEE HALL
TRANSMISSION LINE
PLAT TO ACCOMPANY RIGHT-OF-WAY AGREEMENT
WITH
J. C. HICKS ET AL
DISTRICT: POWHATAN COUNTY: JAMES CITY STATE: VA.
SCALE: 1 INCH = 200 FT. NO. 130
DATE: NOV. 1940 SURVEYED BY: STONE & WEBSTER ENG. CORP.

