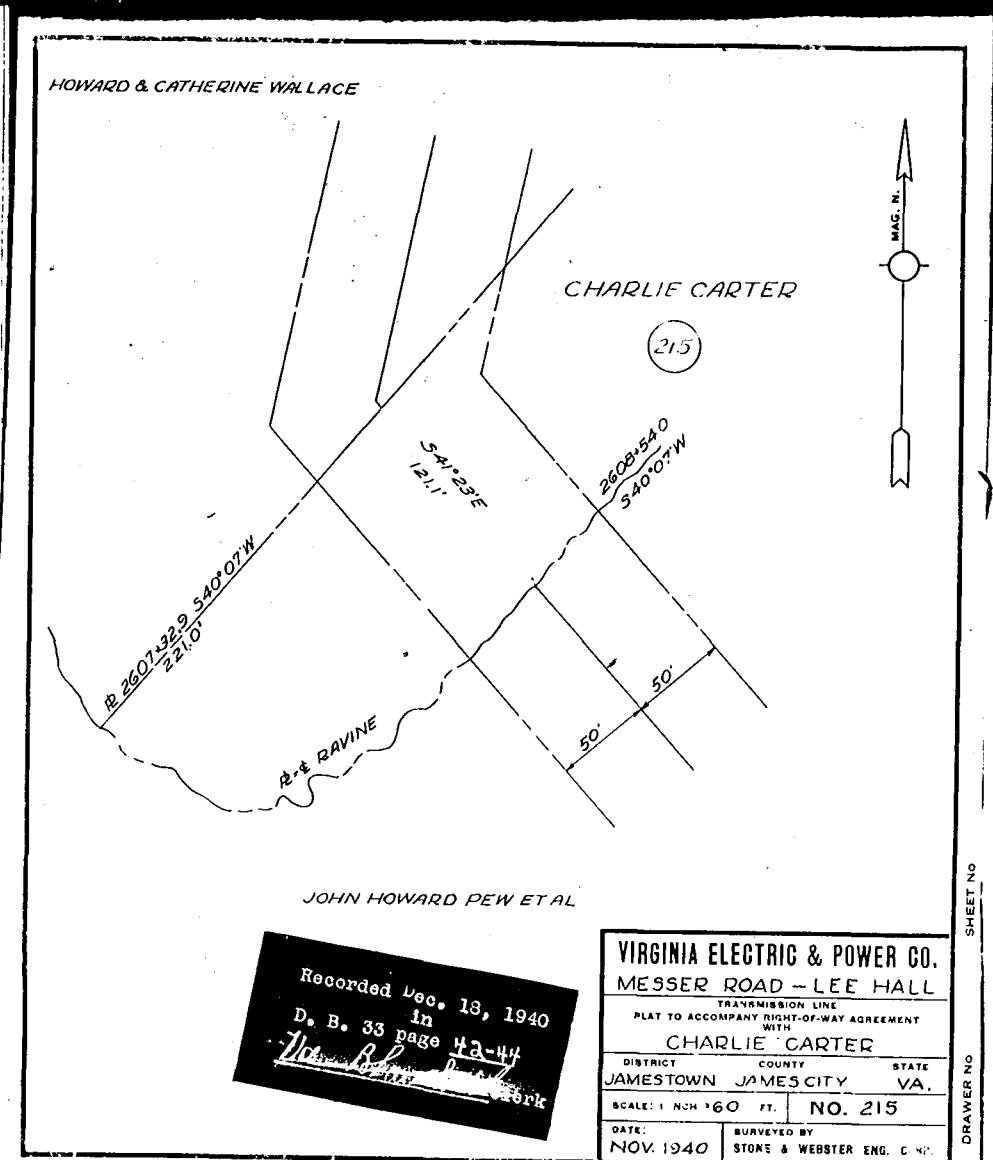


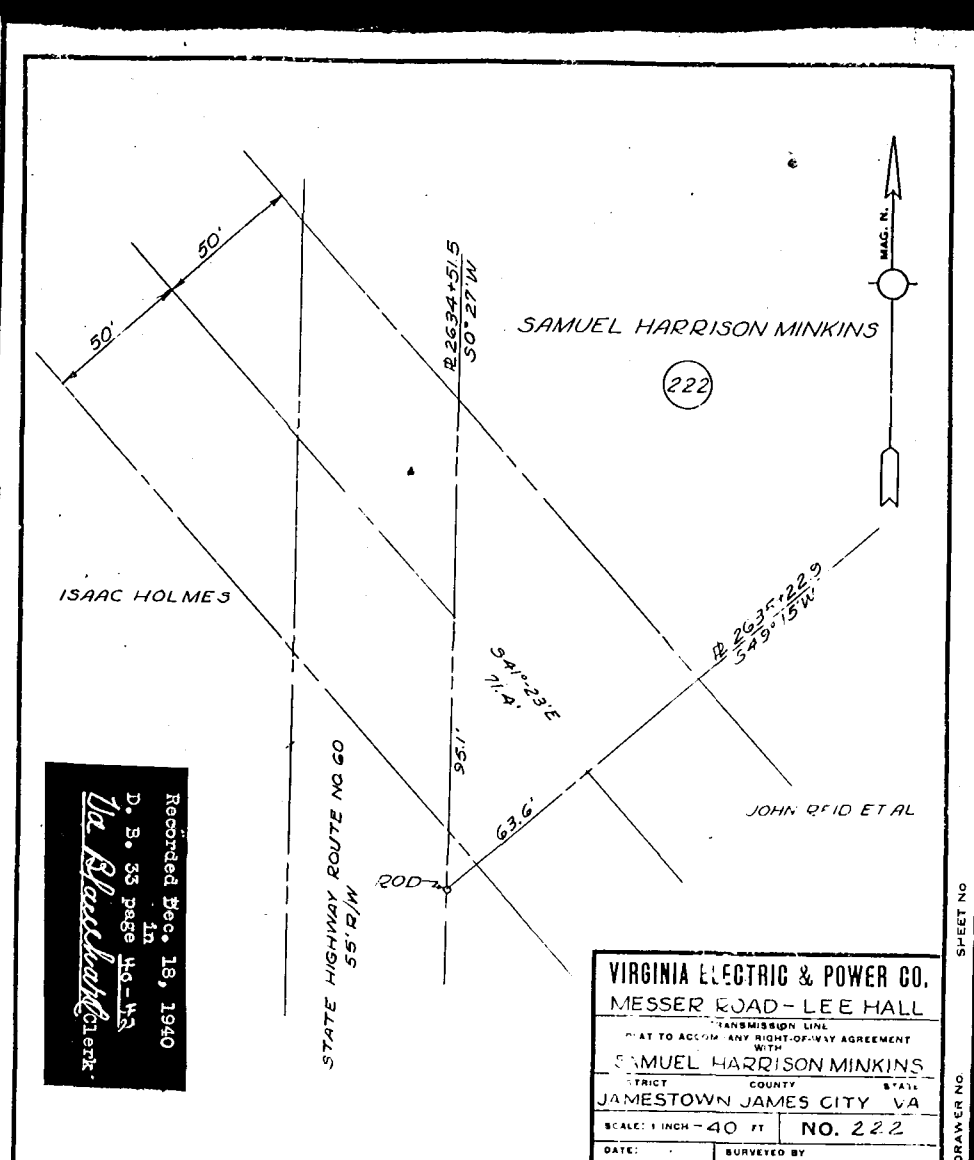
Recorded Dec. 18, 1940
 35 in
 D. B. 33 page 44-47
Wm. Blauhardt

VIRGINIA ELECTRIC & POWER CO.
 MESSER ROAD-LEE HALL
 TRANSMISSION LINE
 PLAT TO ACCOMPANY RIGHT-OF-WAY AGREEMENT
 WITH
 ISAAC HOLMES
 DISTRICT COUNTY STATE
 JAMESTOWN JAMES CITY VA.
 SCALE: 1 INCH = 50 FT. NO. 220
 DATE: NOV. 1940 SURVEYED BY STONE & WEBSTER ENG. CORP.



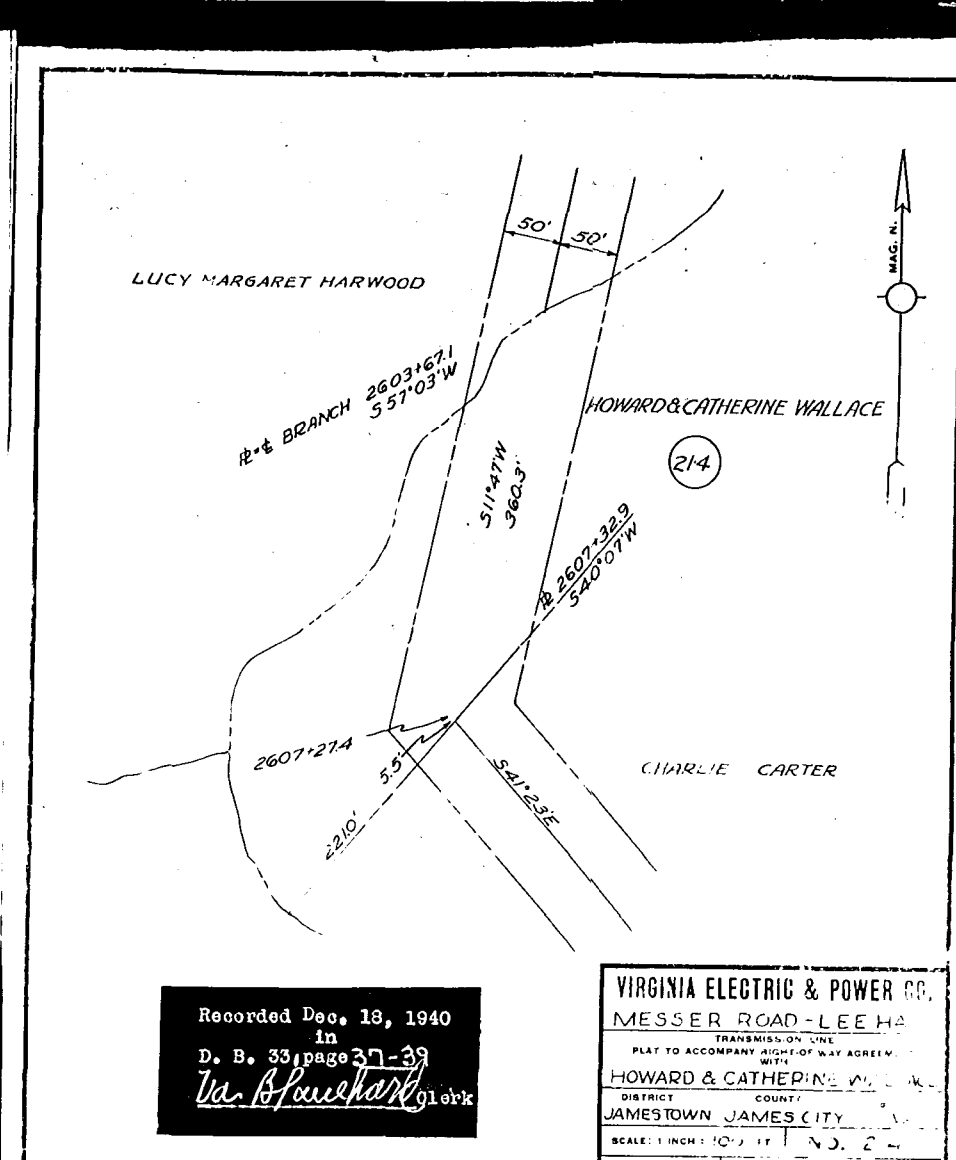
Recorded Dec. 18, 1940
 35 in
 D. B. 33 page 42-44
Wm. Blauhardt

VIRGINIA ELECTRIC & POWER CO.
 MESSER ROAD-LEE HALL
 TRANSMISSION LINE
 PLAT TO ACCOMPANY RIGHT-OF-WAY AGREEMENT
 WITH
 CHARLIE CARTER
 DISTRICT COUNTY STATE
 JAMESTOWN JAMES CITY VA.
 SCALE: 1 INCH = 60 FT. NO. 215
 DATE: NOV. 1940 SURVEYED BY STONE & WEBSTER ENG. CORP.



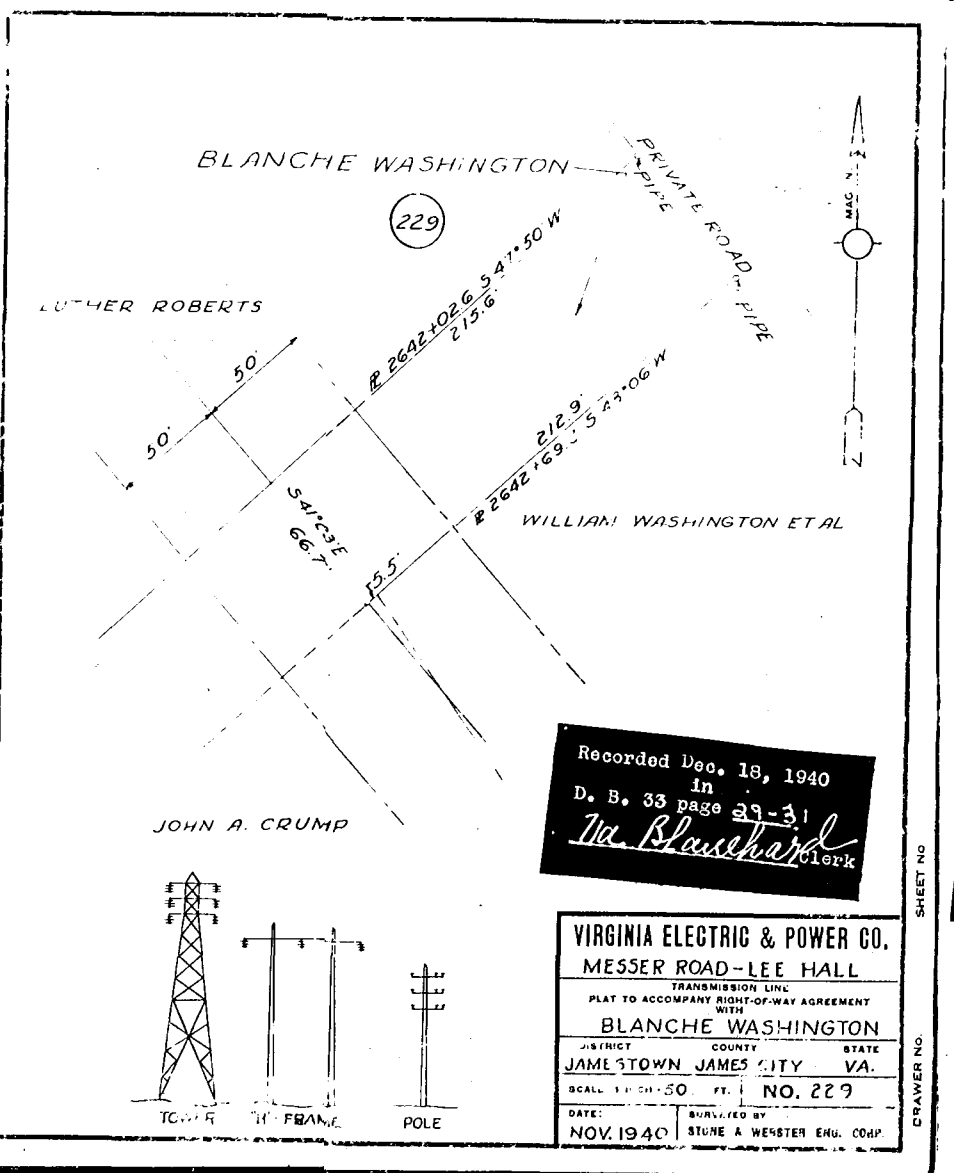
Recorded Dec. 18, 1940
 35 in
 D. B. 33 page 44-47
Wm. Blauhardt

VIRGINIA ELECTRIC & POWER CO.
 MESSER ROAD-LEE HALL
 TRANSMISSION LINE
 PLAT TO ACCOMPANY RIGHT-OF-WAY AGREEMENT
 WITH
 SAMUEL HARRISON MINKINS
 DISTRICT COUNTY STATE
 JAMESTOWN JAMES CITY VA.
 SCALE: 1 INCH = 40 FT. NO. 222
 DATE: NOV. 1940 SURVEYED BY STONE & WEBSTER ENG. CORP.



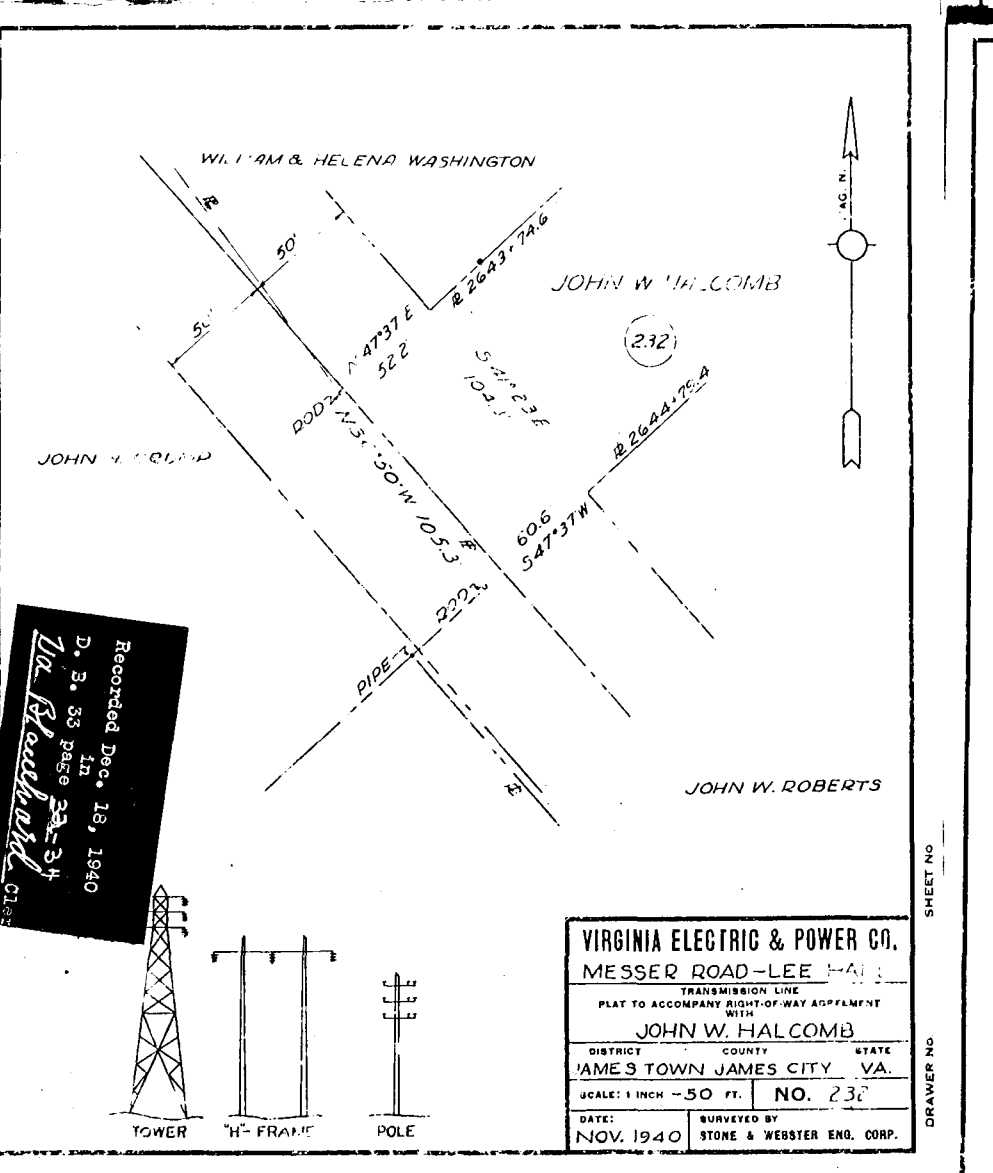
Recorded Dec. 18, 1940
 35 in
 D. B. 33 page 37-39
Wm. Blauhardt

VIRGINIA ELECTRIC & POWER CO.
 MESSER ROAD-LEE HALL
 TRANSMISSION LINE
 PLAT TO ACCOMPANY RIGHT-OF-WAY AGREEMENT
 WITH
 HOWARD & CATHERINE WALLACE
 DISTRICT COUNTY STATE
 JAMESTOWN JAMES CITY VA.
 SCALE: 1 INCH = 100 FT. NO. 214
 DATE: NOV. 1940 SURVEYED BY STONE & WEBSTER ENG. CORP.



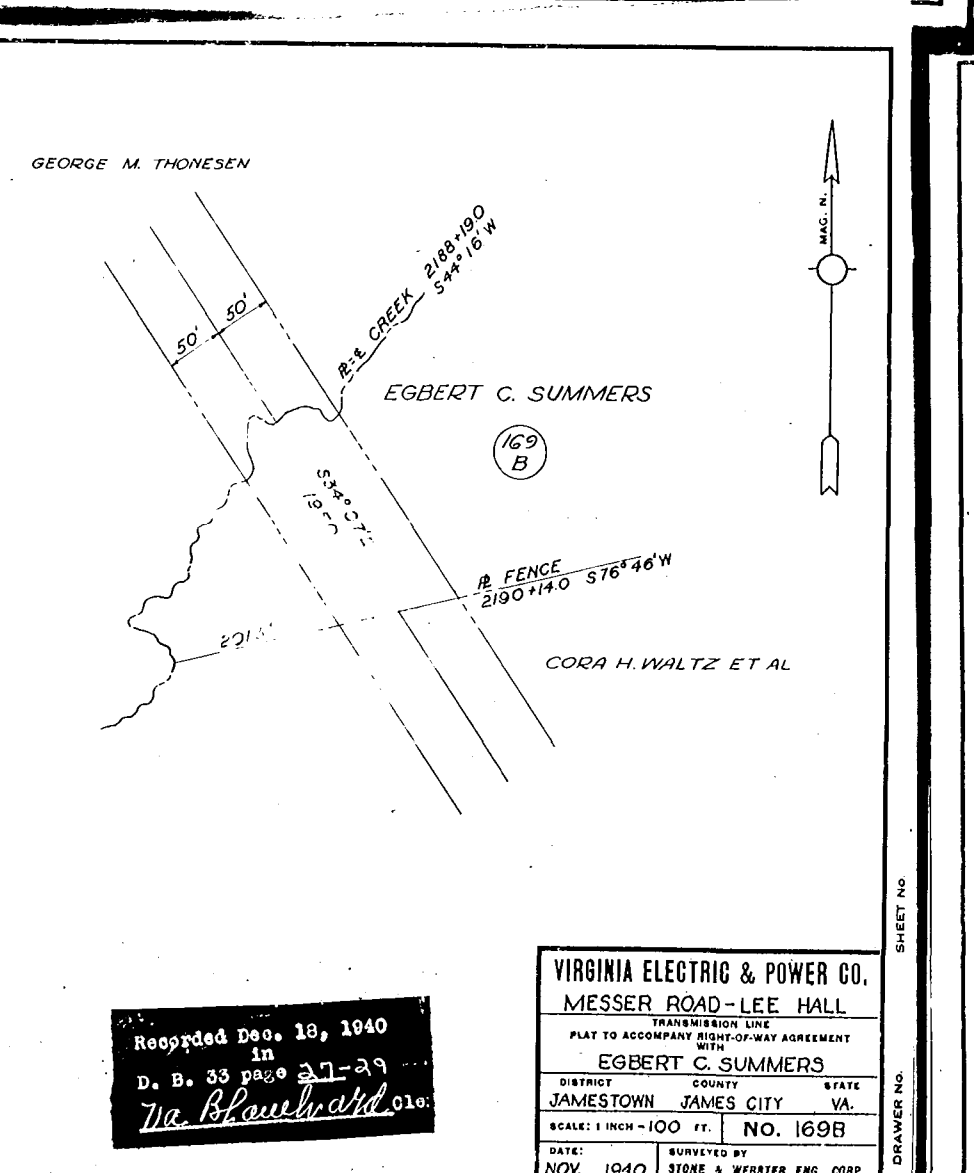
Recorded Dec. 18, 1940
 35 in
 D. B. 33 page 29-31
Wm. Blauhardt

VIRGINIA ELECTRIC & POWER CO.
 MESSER ROAD-LEE HALL
 TRANSMISSION LINE
 PLAT TO ACCOMPANY RIGHT-OF-WAY AGREEMENT
 WITH
 BLANCHE WASHINGTON
 DISTRICT COUNTY STATE
 JAMESTOWN JAMES CITY VA.
 SCALE: 1 INCH = 50 FT. NO. 229
 DATE: NOV. 1940 SURVEYED BY STONE & WEBSTER ENG. CORP.



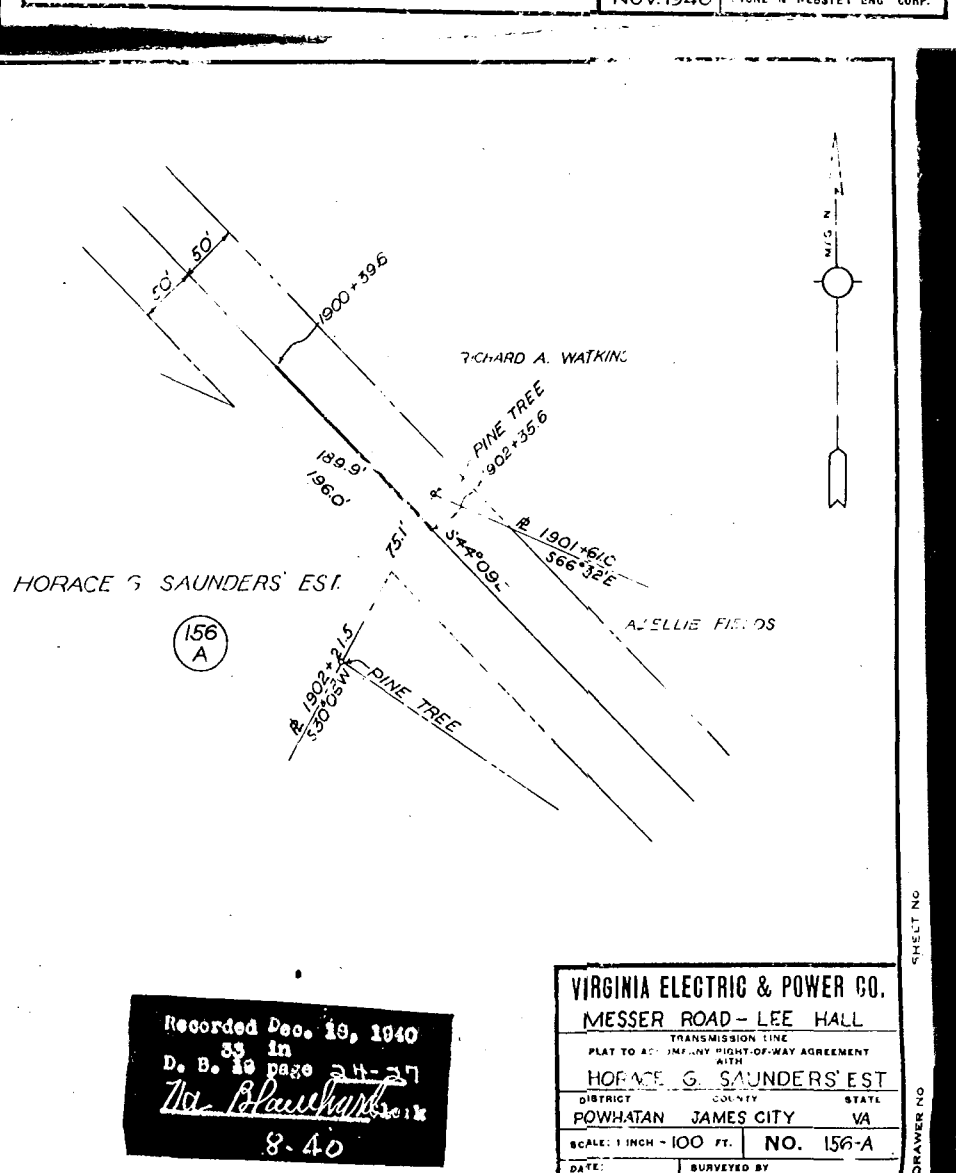
Recorded Dec. 18, 1940
 35 in
 D. B. 33 page 22-24
Wm. Blauhardt

VIRGINIA ELECTRIC & POWER CO.
 MESSER ROAD-LEE HALL
 TRANSMISSION LINE
 PLAT TO ACCOMPANY RIGHT-OF-WAY AGREEMENT
 WITH
 JOHN W. HALCOMB
 DISTRICT COUNTY STATE
 JAMESTOWN JAMES CITY VA.
 SCALE: 1 INCH = 50 FT. NO. 232
 DATE: NOV. 1940 SURVEYED BY STONE & WEBSTER ENG. CORP.



Recorded Dec. 18, 1940
 35 in
 D. B. 33 page 27-29
Wm. Blauhardt

VIRGINIA ELECTRIC & POWER CO.
 MESSER ROAD-LEE HALL
 TRANSMISSION LINE
 PLAT TO ACCOMPANY RIGHT-OF-WAY AGREEMENT
 WITH
 EGBERT C. SUMMERS
 DISTRICT COUNTY STATE
 JAMESTOWN JAMES CITY VA.
 SCALE: 1 INCH = 100 FT. NO. 169B
 DATE: NOV. 1940 SURVEYED BY STONE & WEBSTER ENG. CORP.



Recorded Dec. 18, 1940
 35 in
 D. B. 33 page 24-27
Wm. Blauhardt

VIRGINIA ELECTRIC & POWER CO.
 MESSER ROAD-LEE HALL
 TRANSMISSION LINE
 PLAT TO ACCOMPANY RIGHT-OF-WAY AGREEMENT
 WITH
 HORACE G. SAUNDERS' EST
 DISTRICT COUNTY STATE
 POWHATAN JAMES CITY VA.
 SCALE: 1 INCH = 100 FT. NO. 156-A
 DATE: SEPT. 1940 SURVEYED BY STONE & WEBSTER ENG. CORP.