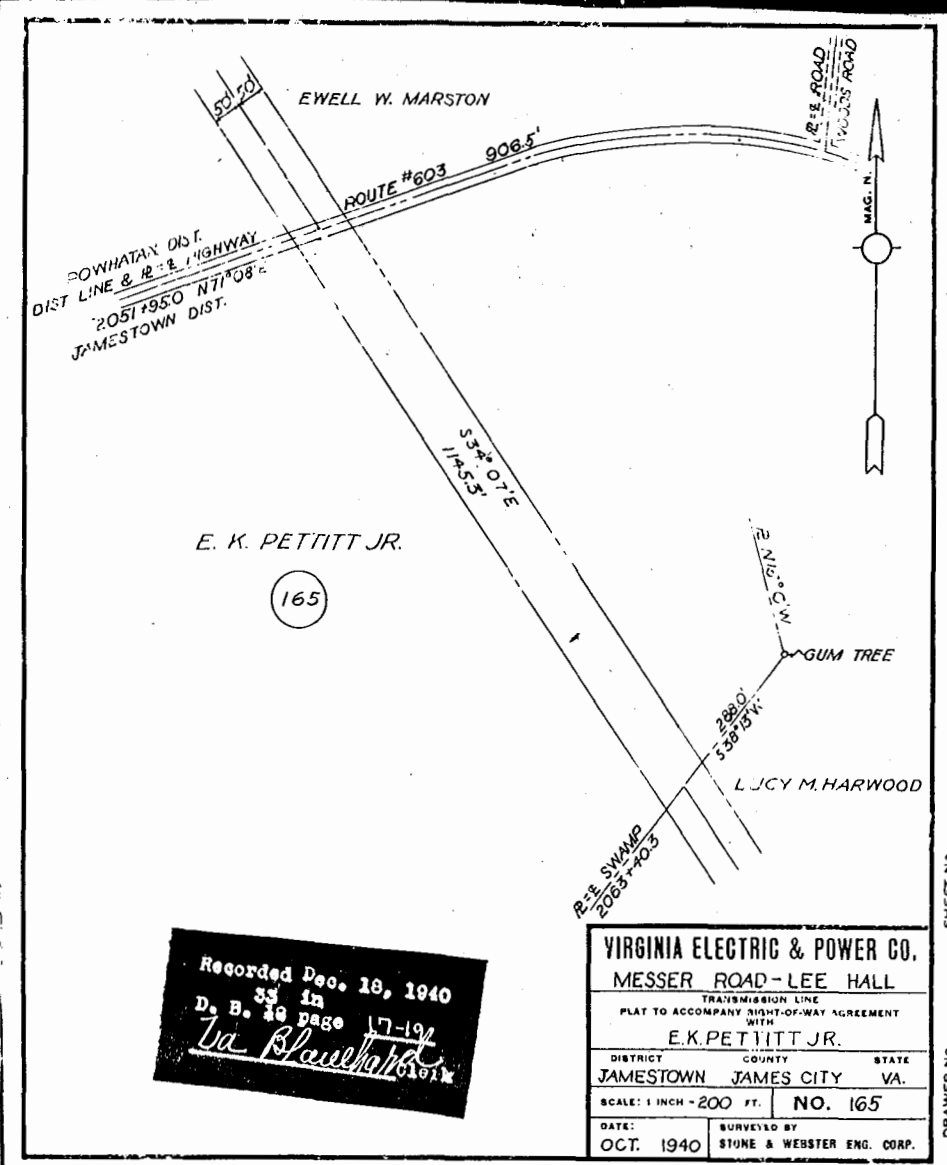


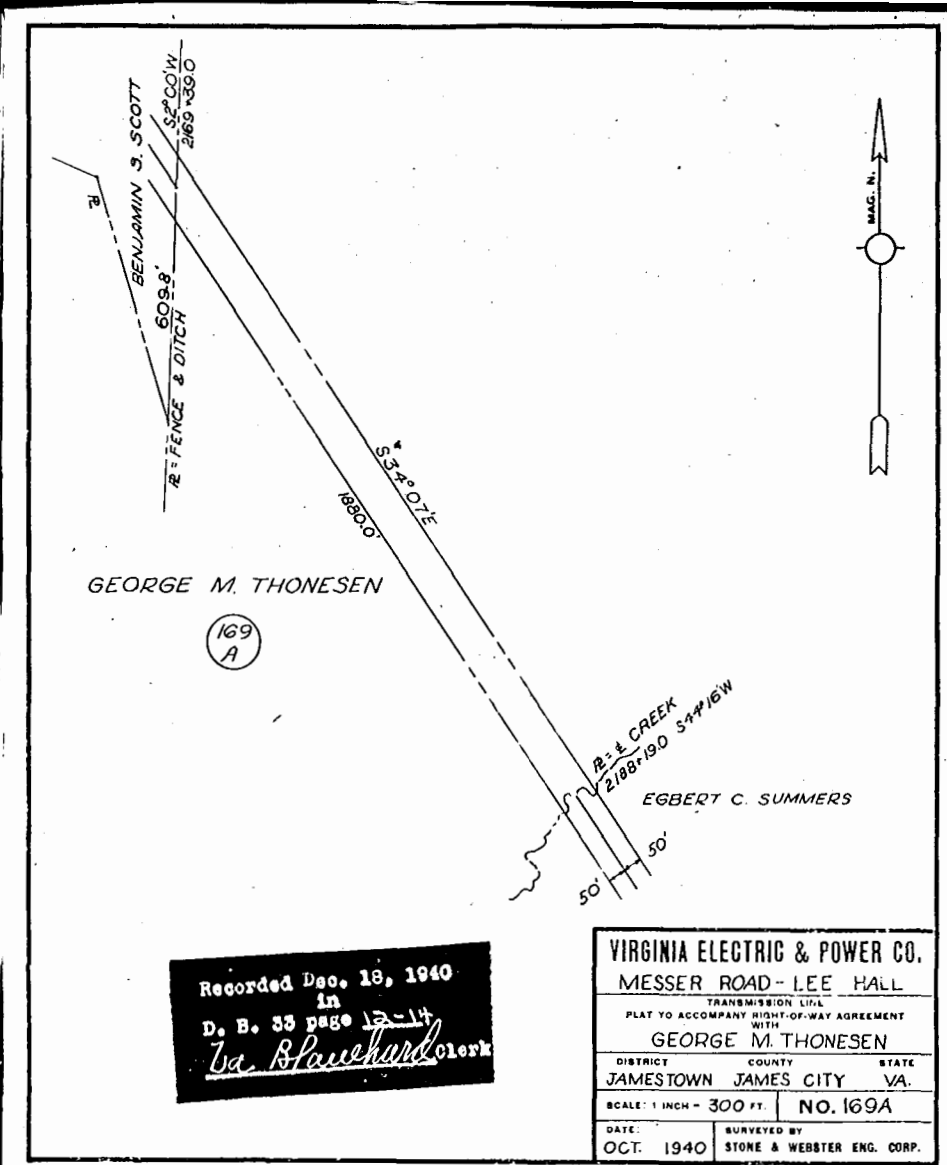
VIRGINIA ELECTRIC & POWER CO.
 MESSER ROAD - LEE HALL
 TRANSMISSION LINE
 PLAT TO ACCOMPANY RIGHT-OF-WAY AGREEMENT WITH
 A. TILDEN SMITH
 DISTRICT COUNTY STATE
 JAMESTOWN JAMES CITY VA
 SCALE: 1 INCH = 300 FT. NO. 167
 DATE: OCT. 1940 SURVEYED BY STONE & WEBSTER ENG. CORP.

Recorded Dec. 18, 1940
 in
 D. B. 33 page 19-21
 Va. Bluebird



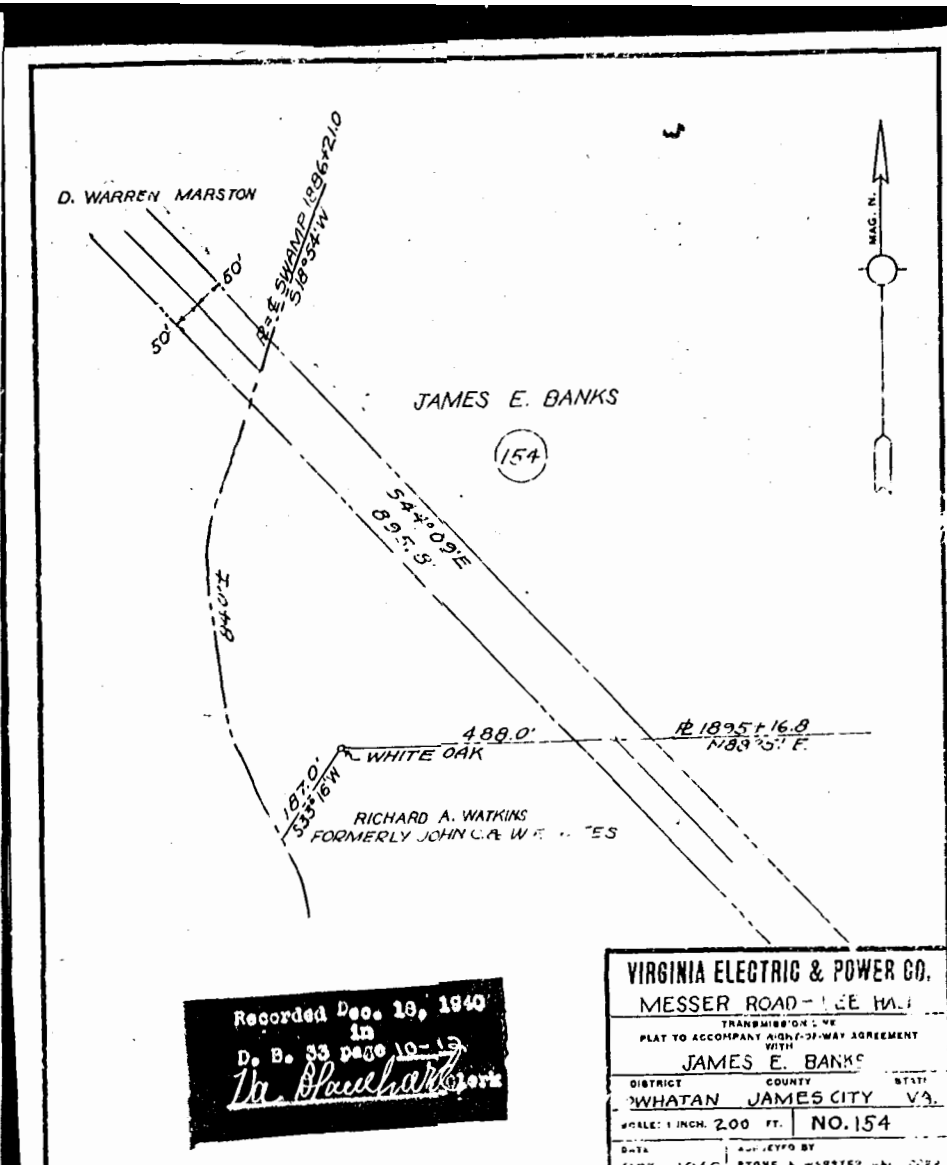
VIRGINIA ELECTRIC & POWER CO.
 MESSER ROAD - LEE HALL
 TRANSMISSION LINE
 PLAT TO ACCOMPANY RIGHT-OF-WAY AGREEMENT WITH
 E. K. PETTITT JR.
 DISTRICT COUNTY STATE
 JAMESTOWN JAMES CITY VA
 SCALE: 1 INCH = 200 FT. NO. 165
 DATE: OCT. 1940 SURVEYED BY STONE & WEBSTER ENG. CORP.

Recorded Dec. 18, 1940
 in
 D. B. 33 page 17-19
 Va. Bluebird



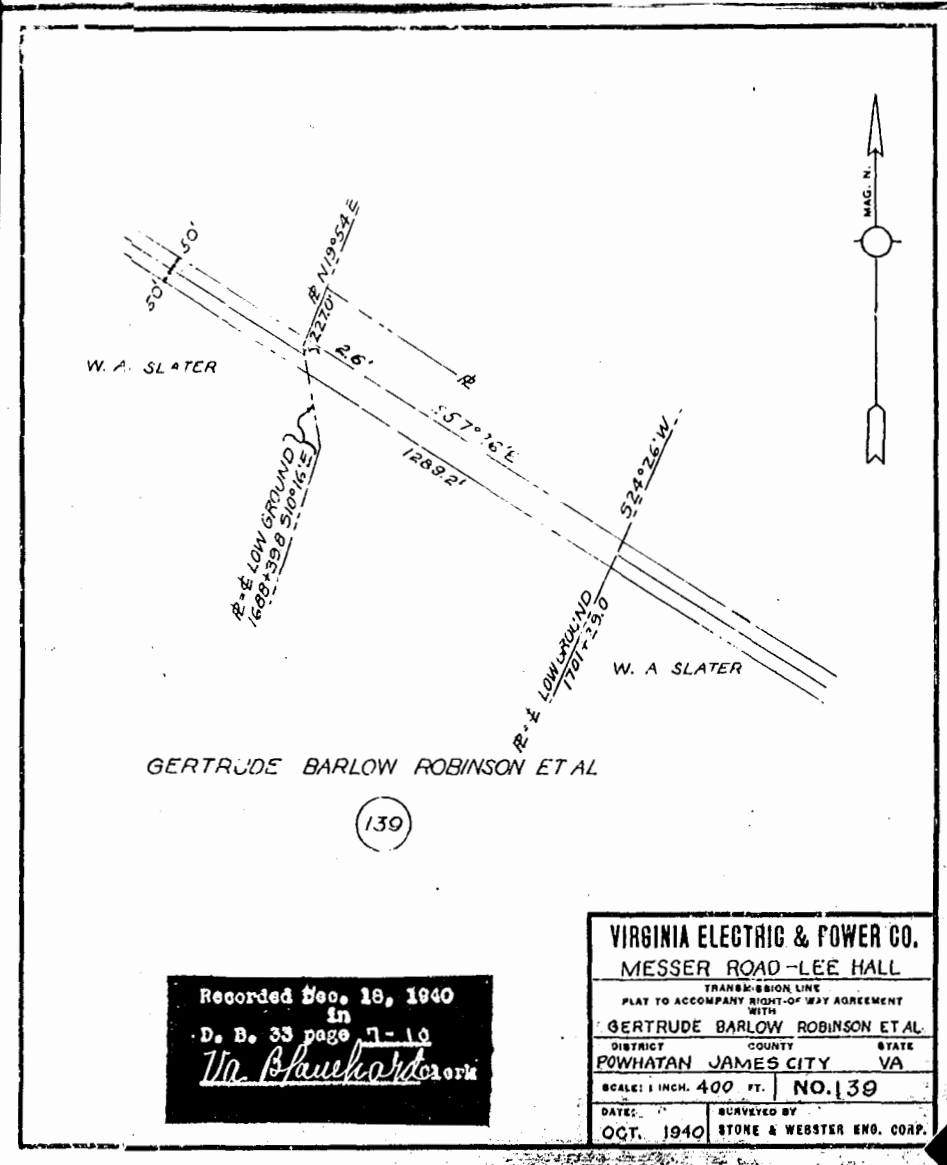
VIRGINIA ELECTRIC & POWER CO.
 MESSER ROAD - LEE HALL
 TRANSMISSION LINE
 PLAT TO ACCOMPANY RIGHT-OF-WAY AGREEMENT WITH
 GEORGE M. THONSEN
 DISTRICT COUNTY STATE
 JAMESTOWN JAMES CITY VA
 SCALE: 1 INCH = 300 FT. NO. 169A
 DATE: OCT. 1940 SURVEYED BY STONE & WEBSTER ENG. CORP.

Recorded Dec. 18, 1940
 in
 D. B. 33 page 12-14
 Va. Bluebird



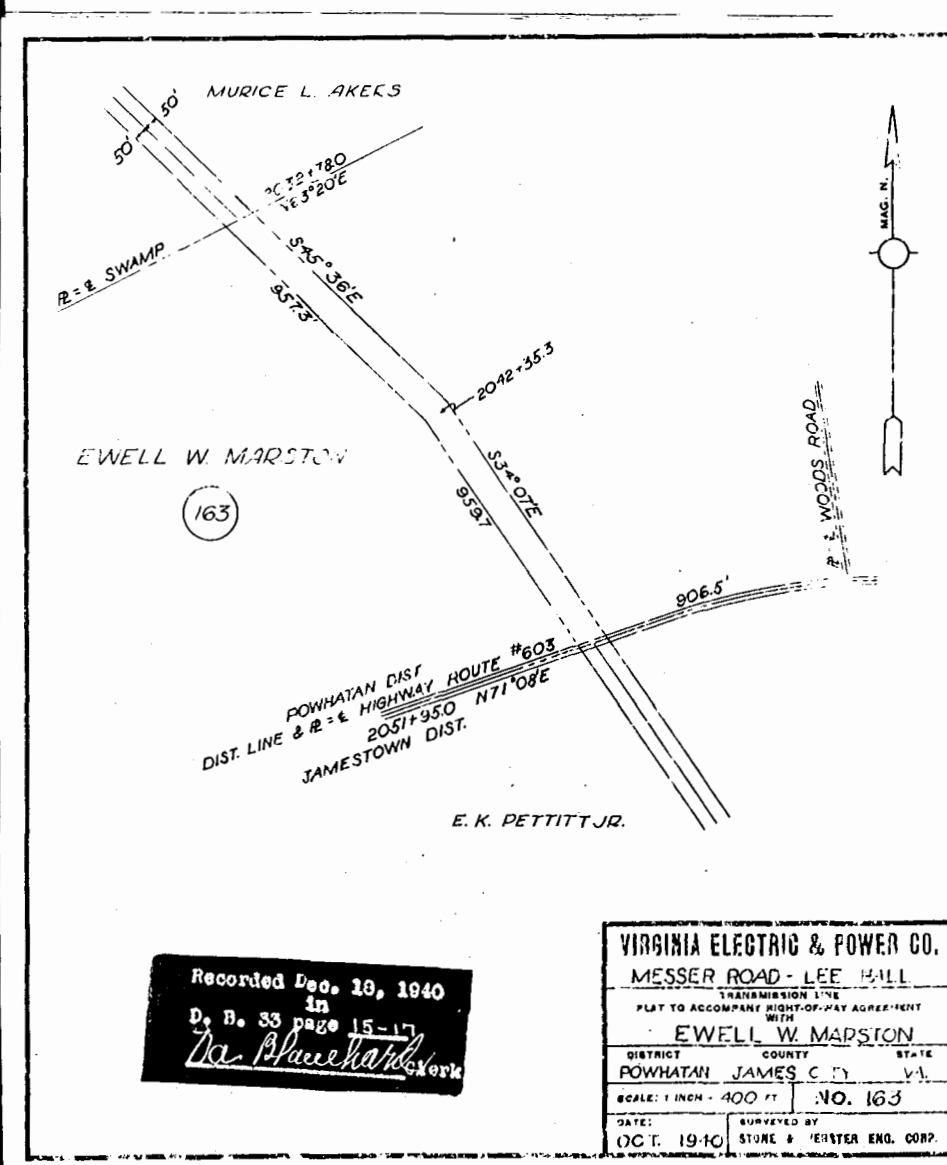
VIRGINIA ELECTRIC & POWER CO.
 MESSER ROAD - LEE HALL
 TRANSMISSION LINE
 PLAT TO ACCOMPANY RIGHT-OF-WAY AGREEMENT WITH
 JAMES E. BANKS
 DISTRICT COUNTY STATE
 POWHATAN JAMES CITY VA
 SCALE: 1 INCH = 200 FT. NO. 154
 DATE: OCT. 1940 SURVEYED BY STONE & WEBSTER ENG. CORP.

Recorded Dec. 18, 1940
 in
 D. B. 33 page 10-12
 Va. Bluebird



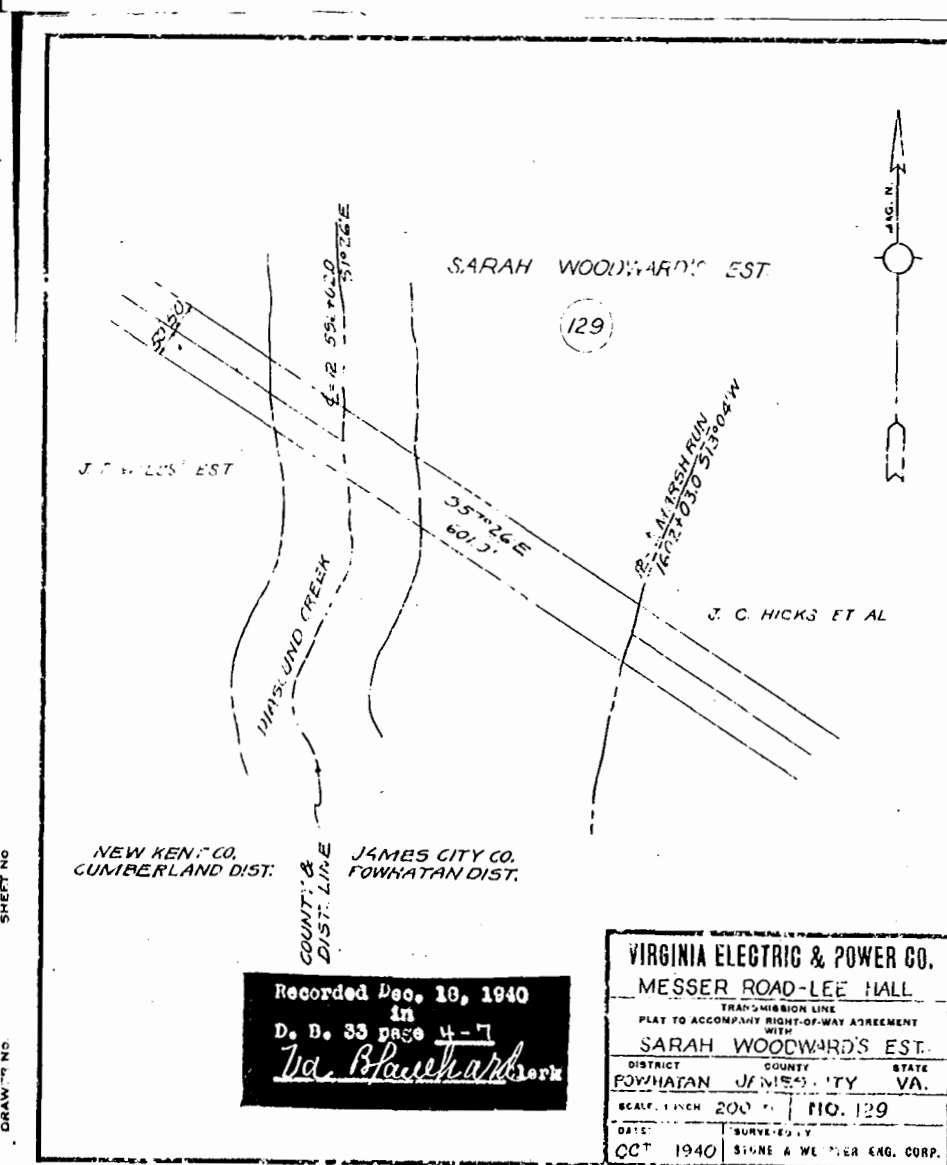
VIRGINIA ELECTRIC & POWER CO.
 MESSER ROAD - LEE HALL
 TRANSMISSION LINE
 PLAT TO ACCOMPANY RIGHT-OF-WAY AGREEMENT WITH
 GERTRUDE BARLOW ROBINSON ET AL
 DISTRICT COUNTY STATE
 POWHATAN JAMES CITY VA
 SCALE: 1 INCH = 400 FT. NO. 139
 DATE: OCT. 1940 SURVEYED BY STONE & WEBSTER ENG. CORP.

Recorded Dec. 18, 1940
 in
 D. B. 33 page 7-10
 Va. Bluebird



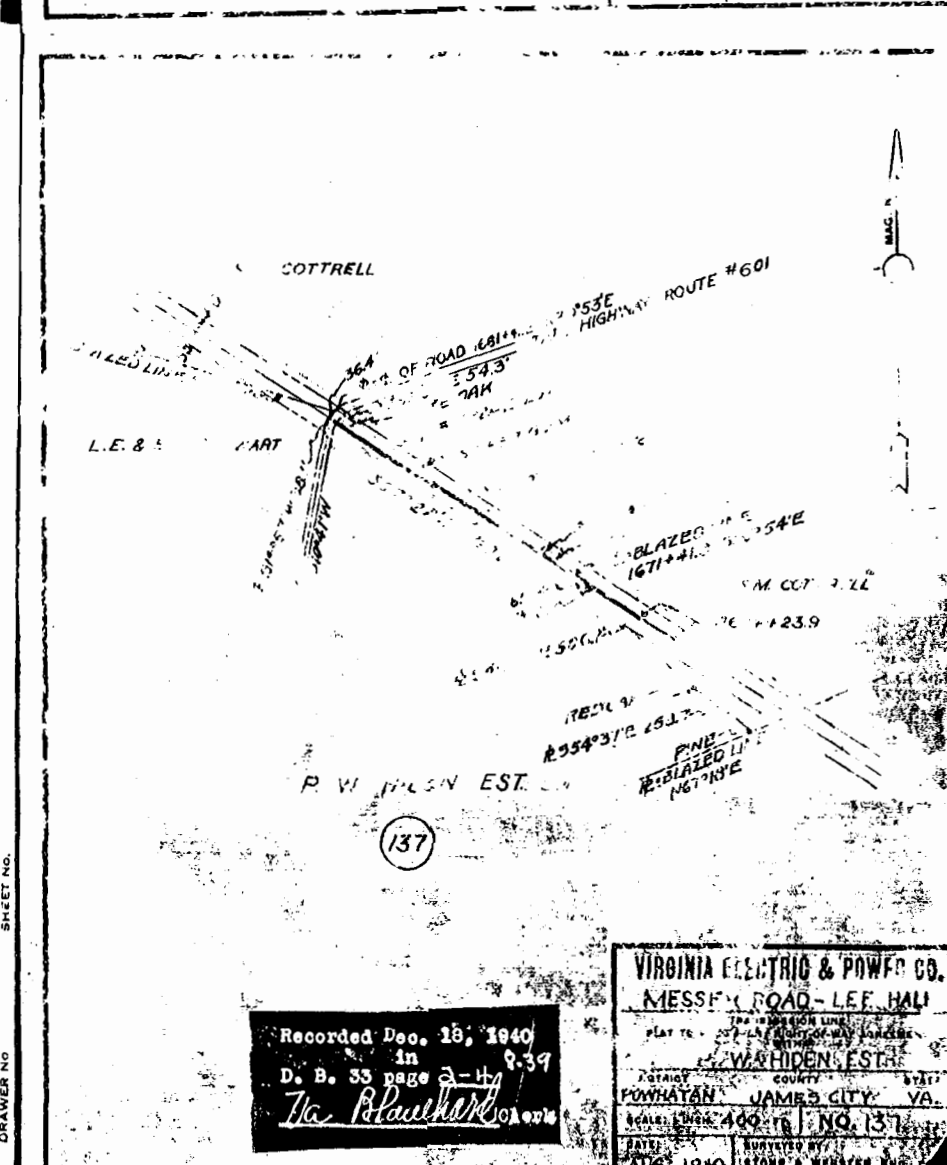
VIRGINIA ELECTRIC & POWER CO.
 MESSER ROAD - LEE HALL
 TRANSMISSION LINE
 PLAT TO ACCOMPANY RIGHT-OF-WAY AGREEMENT WITH
 E. K. PETTITT JR.
 DISTRICT COUNTY STATE
 POWHATAN JAMES CITY VA
 SCALE: 1 INCH = 400 FT. NO. 163
 DATE: OCT. 1940 SURVEYED BY STONE & WEBSTER ENG. CORP.

Recorded Dec. 18, 1940
 in
 D. B. 33 page 15-17
 Va. Bluebird



VIRGINIA ELECTRIC & POWER CO.
 MESSER ROAD - LEE HALL
 TRANSMISSION LINE
 PLAT TO ACCOMPANY RIGHT-OF-WAY AGREEMENT WITH
 SARAH WOODWARD'S EST.
 DISTRICT COUNTY STATE
 POWHATAN JAMES CITY VA
 SCALE: 1 INCH = 200 FT. NO. 129
 DATE: OCT. 1940 SURVEYED BY STONE & WEBSTER ENG. CORP.

Recorded Dec. 18, 1940
 in
 D. B. 33 page 4-7
 Va. Bluebird



VIRGINIA ELECTRIC & POWER CO.
 MESSER ROAD - LEE HALL
 TRANSMISSION LINE
 PLAT TO ACCOMPANY RIGHT-OF-WAY AGREEMENT WITH
 P. W. HICKS EST.
 DISTRICT COUNTY STATE
 POWHATAN JAMES CITY VA
 SCALE: 1 INCH = 400 FT. NO. 137
 DATE: OCT. 1940 SURVEYED BY STONE & WEBSTER ENG. CORP.

Recorded Dec. 18, 1940
 in
 D. B. 33 page 2-4
 Va. Bluebird