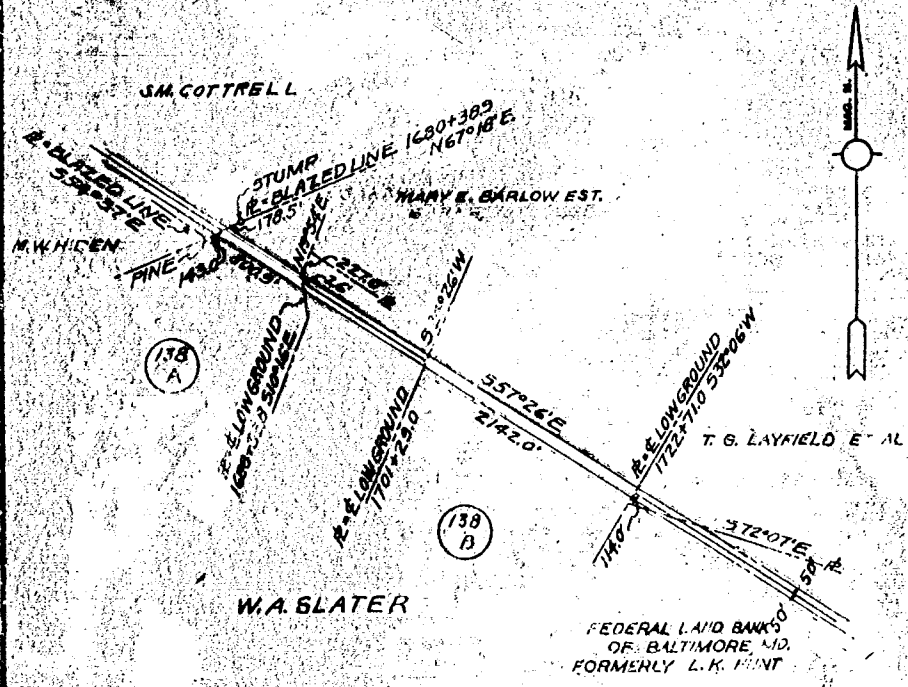


Recorded Oct. 18, 1940,
in
D. B. 32 page 436
Va. Blanchard Clerk

VIRGINIA ELECTRIC & POWER CO.	
MESSER ROAD - LEE HALL	
TRANSMISSION LINE	
PLAT TO ACCOMPANY RIGHT-OF-WAY AGREEMENT WITH	
SHERMAN JONES	
DISTRICT	COUNTY STATE
POWHATAN	JAMES CITY VA.
SCALE: 1 INCH = 400 FT.	NO. 157
DATE: OCT. 1940	SURVEYED BY: STONE & WEBSTER ENG. CORP.

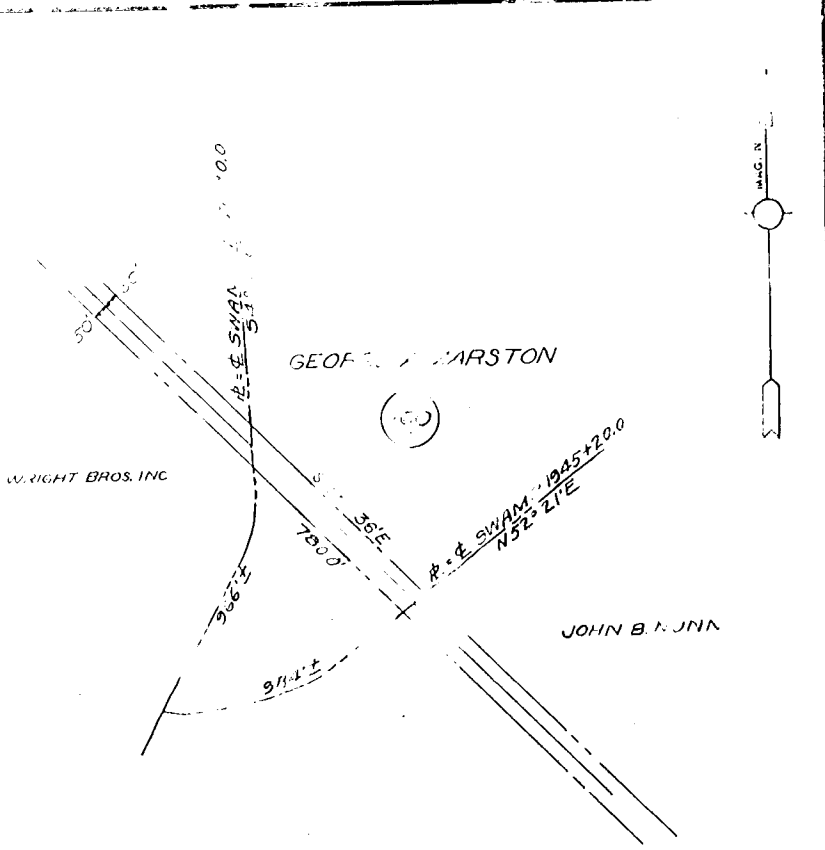
DRAWER NO. SHEET NO.



Recorded Oct. 18, 1940,
in
D. B. 32 page 443
Va. Blanchard Clerk

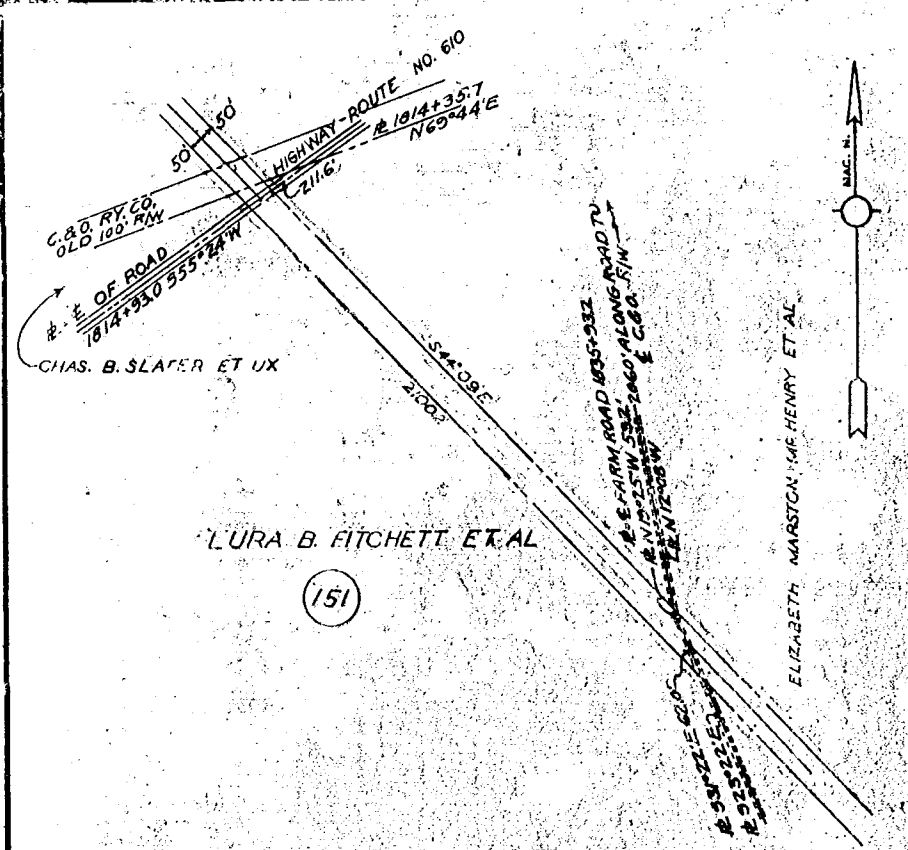
VIRGINIA ELECTRIC & POWER CO.	
MESSER ROAD - LEE HALL	
TRANSMISSION LINE	
PLAT TO ACCOMPANY RIGHT-OF-WAY AGREEMENT WITH	
W.A. SLATER	
DISTRICT	COUNTY STATE
POWHATAN	JAMES CITY VA.
SCALE: 1 INCH = 1000 FT.	NO. 138 A, B
DATE: AUG. 1940	SURVEYED BY: STONE & WEBSTER ENG. CORP.

DRAWER NO. SHEET NO.



VIRGINIA ELECTRIC & POWER CO.	
MESSER ROAD - LEE HALL	
TRANSMISSION LINE	
PLAT TO ACCOMPANY RIGHT-OF-WAY AGREEMENT WITH	
GEORGE A. MARSTON	
DISTRICT	COUNTY STATE
POWHATAN	JAMES CITY VA.
SCALE: 1 INCH = 400 FT.	NO. 150
DATE: SEPT. 1940	SURVEYED BY: STONE & WEBSTER ENG. CORP.

DRAWER NO. SHEET NO.



Recorded Oct. 18, 1940,
in
D. B. 32 page 440
Va. Blanchard Clerk

VIRGINIA ELECTRIC & POWER CO.	
MESSER ROAD - LEE HALL	
TRANSMISSION LINE	
PLAT TO ACCOMPANY RIGHT-OF-WAY AGREEMENT WITH	
LURA B. FITCHETT ET AL	
DISTRICT	COUNTY STATE
POWHATAN	JAMES CITY VA.
SCALE: 1 INCH = 400 FT.	NO. 151
DATE: AUG. 1940	SURVEYED BY: STONE & WEBSTER ENG. CORP.

DRAWER NO. SHEET NO.

