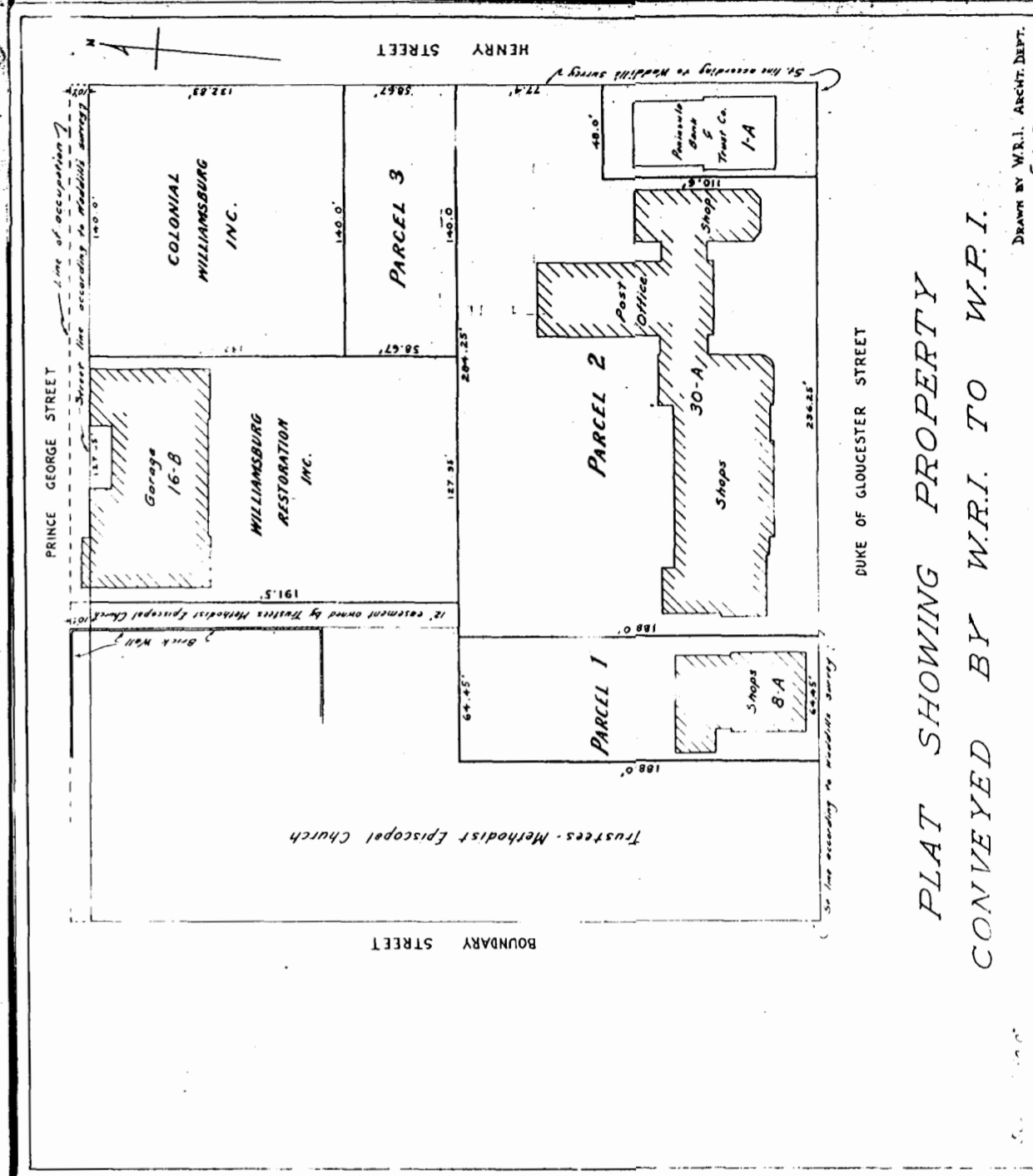


Recorded March 5, 1940
 in
 Co. D. B. 31 page 686
The Bluebird Clerk

CITY OF WILLIAMSBURG VIRGINIA
 PLAT SHOWING LOCATION, ELEVATION
 AND RELATION TO VARIOUS PROPERTIES
 OF A 10' SANITARY SEWER BEGINNING
 AT A POINT ON GRIFFON AVENUE AND
 EXTENDING THROUGH THE BUCKTROUT
 SUBDIVISION, THE WILLIAMS SUBDIVISION
 AND TERMINATING AT A POINT ON THE
 PROPERTY OF MRS. MATTIE C. BURNS
 SURVEYED OCTOBER 1939. SCALE 1" = 60'

8-16



PLAT SHOWING PROPERTY
 CONVEYED BY W.R.I. TO W.P.I.

