

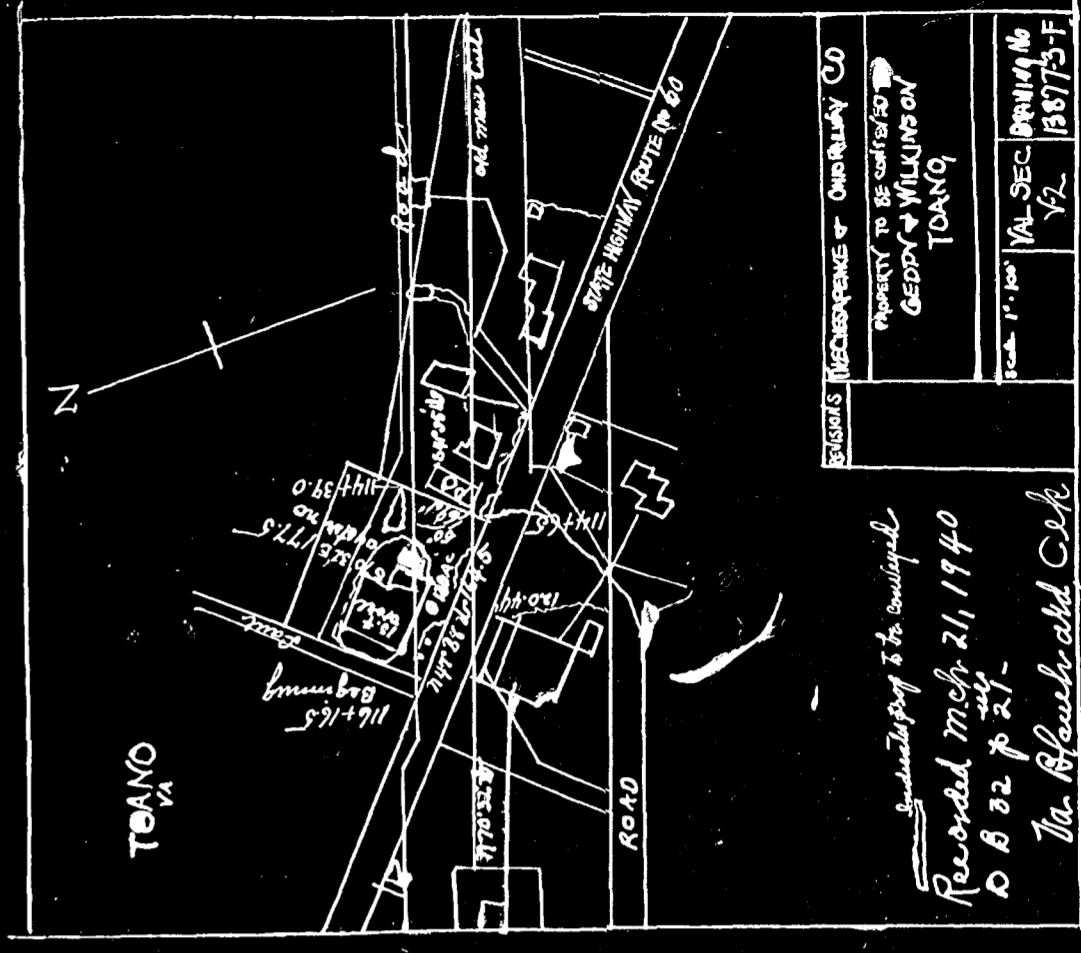
EAST WILLIAMSBURG SUBDIVISION

MARY E. VAUGHAN ESTATE

PRELIMINARY PLAN DEVELOPMENT  
OF  
PINE CREST SUBDIVISION

CERTAIN TOPOGRAPHICAL FEATURES  
MAY RECESSITATE MORE OR LESS CHANGE IN  
ALIGNMENT OF STREETS.  
DIMENSIONS GIVEN ON IRREGULAR LOTS ARE  
CORRECTED AND THEREFORE SUBJECT TO  
CORRECTION.  
30' TRAVELED WAY RECOMMENDED BY  
CITY ENGINEER. SCALE 1" = 40'  
WILLIAMSBURG VA.

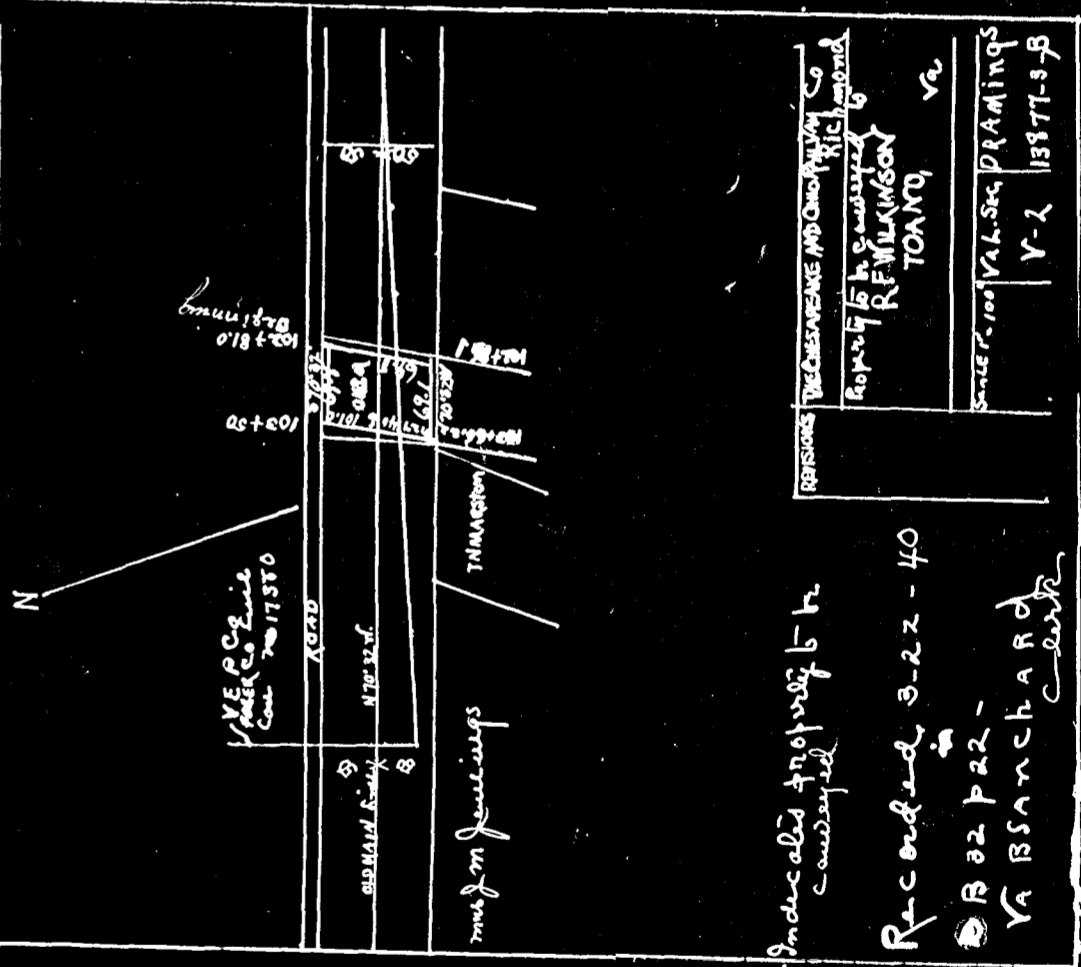
Recorded Dec. 15, 1939  
in  
City D. B. No. 18, p. 149  
W. Blanchard Clerk



RECORDS DEPARTMENT OF COURTESY CO  
PROPERTY TO BE CONVEYED  
GEOFF. WILLIAMS ON  
TIDEBORO  
Scale 1" = 100' VAL-SEC 1114 No  
Y-2 138775-F

Subdivision is to be completed  
Recorded March 21, 1940  
D B 32 p 21-  
W. Blanchard Clerk

8-13



RECORDS DEPARTMENT OF COURTESY CO  
PROPERTY TO BE CONVEYED  
GEOFF. WILLIAMS ON  
TIDEBORO  
Scale 1" = 100' VAL-SEC 1114 No  
Y-2 138775-F

Indicates proposed  
Recorded 3-22-40  
D B 32 p 21-  
W. Blanchard Clerk

