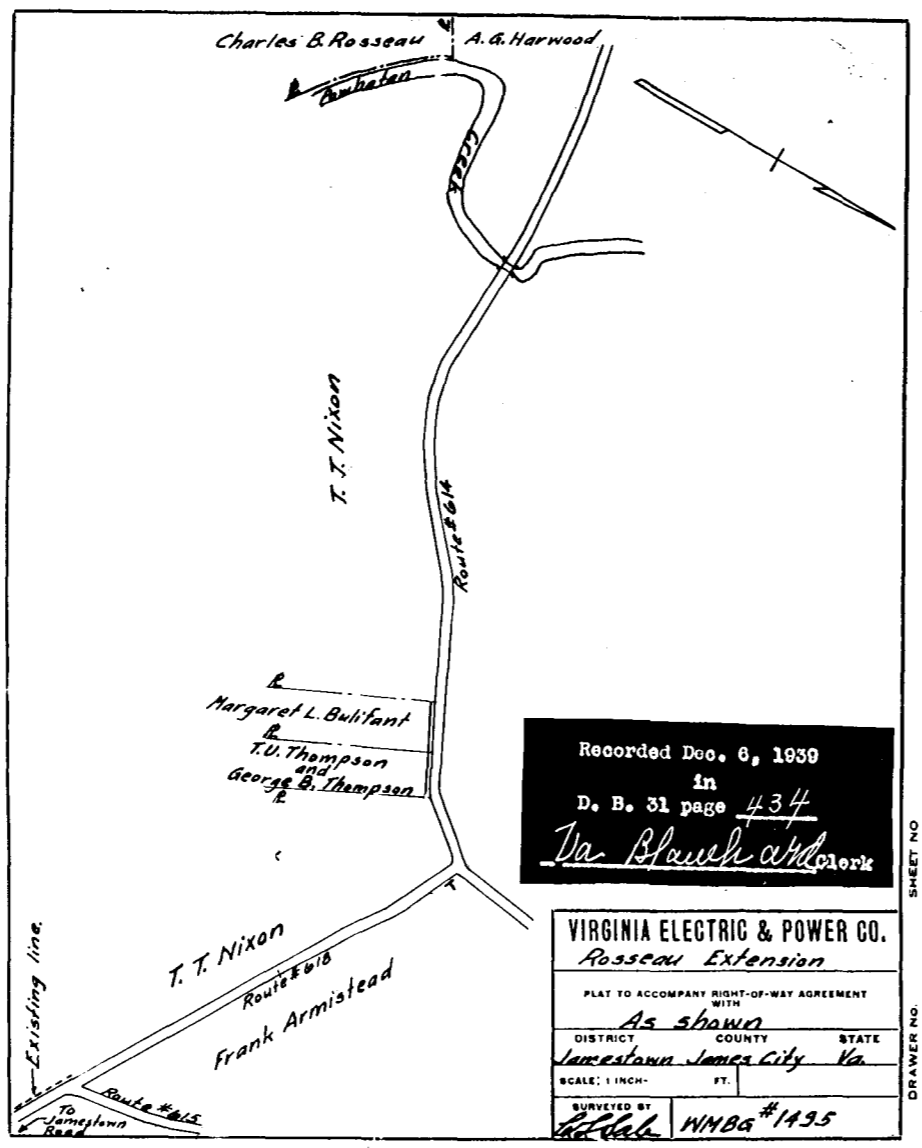


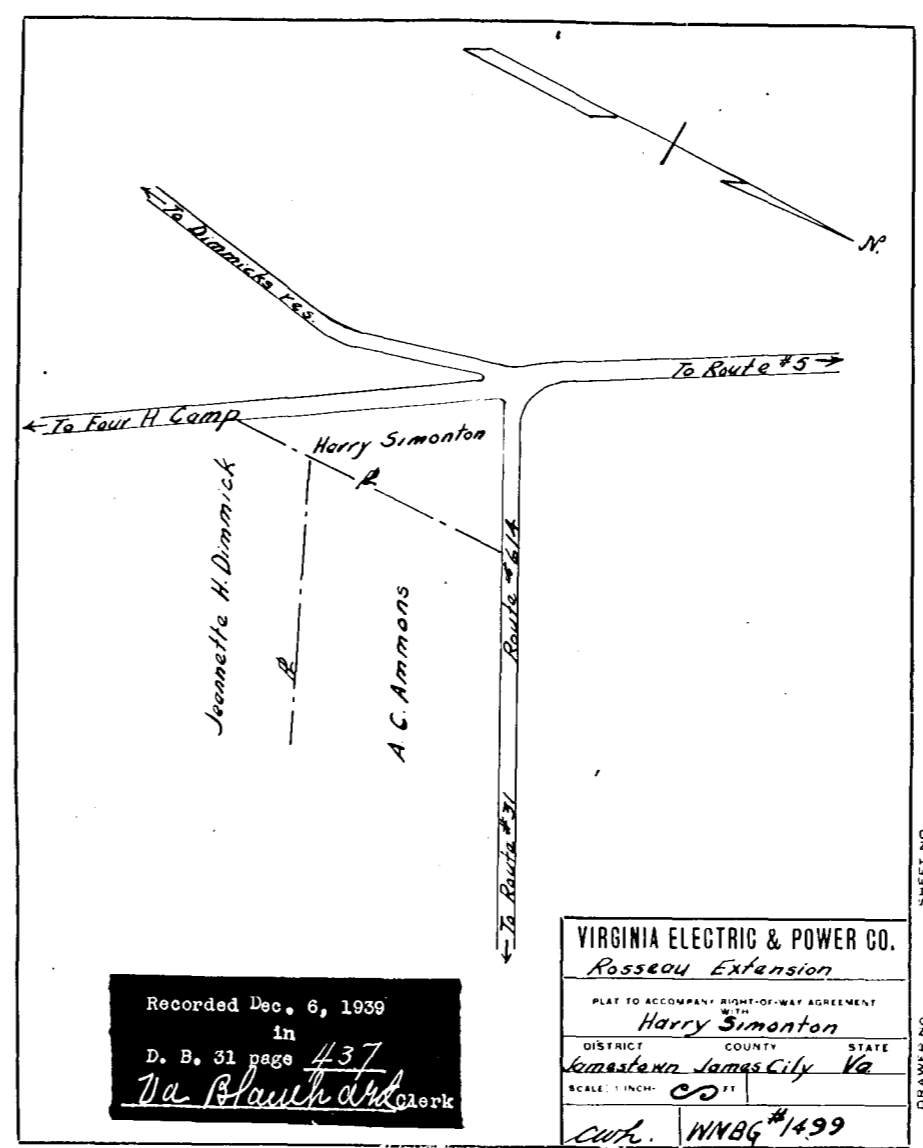
Recorded Dec. 6, 1939
in
D. B. 31 page 432
Va. Blawie Clerk

VIRGINIA ELECTRIC & POWER CO.
Rosseau Extension
PLAT TO ACCOMPANY RIGHT-OF-WAY AGREEMENT WITH
Jeannette H. Dimmick
DISTRICT COUNTY STATE
Jamesstown James City Va.
SCALE: 1 INCH = 60 FT.
SURVEYED BY
C.W.H. WMBG #1498



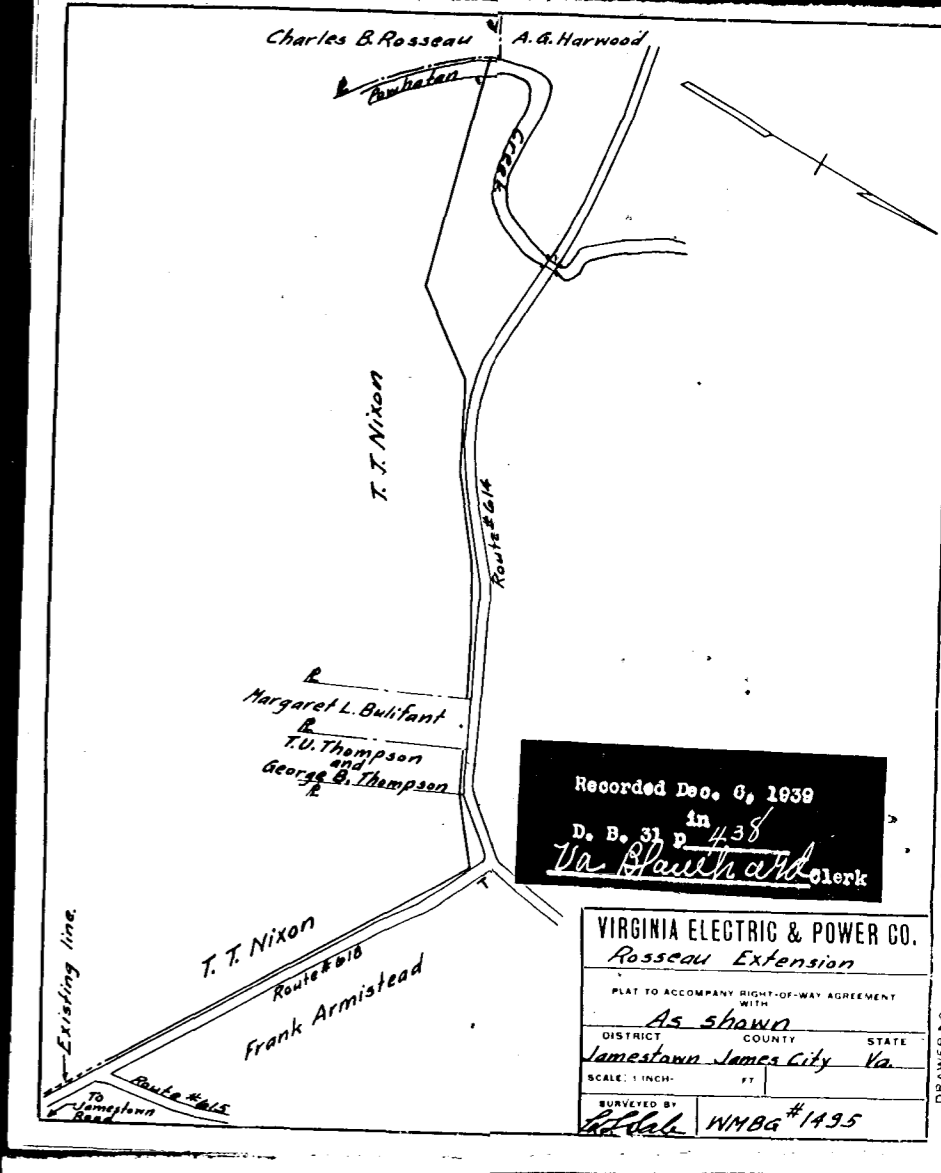
Recorded Dec. 6, 1939
in
D. B. 31 page 434
Va. Blawie Clerk

VIRGINIA ELECTRIC & POWER CO.
Rosseau Extension
PLAT TO ACCOMPANY RIGHT-OF-WAY AGREEMENT WITH
As shown
DISTRICT COUNTY STATE
Jamesstown James City Va.
SCALE: 1 INCH = 60 FT.
SURVEYED BY
C.W.H. WMBG #1495



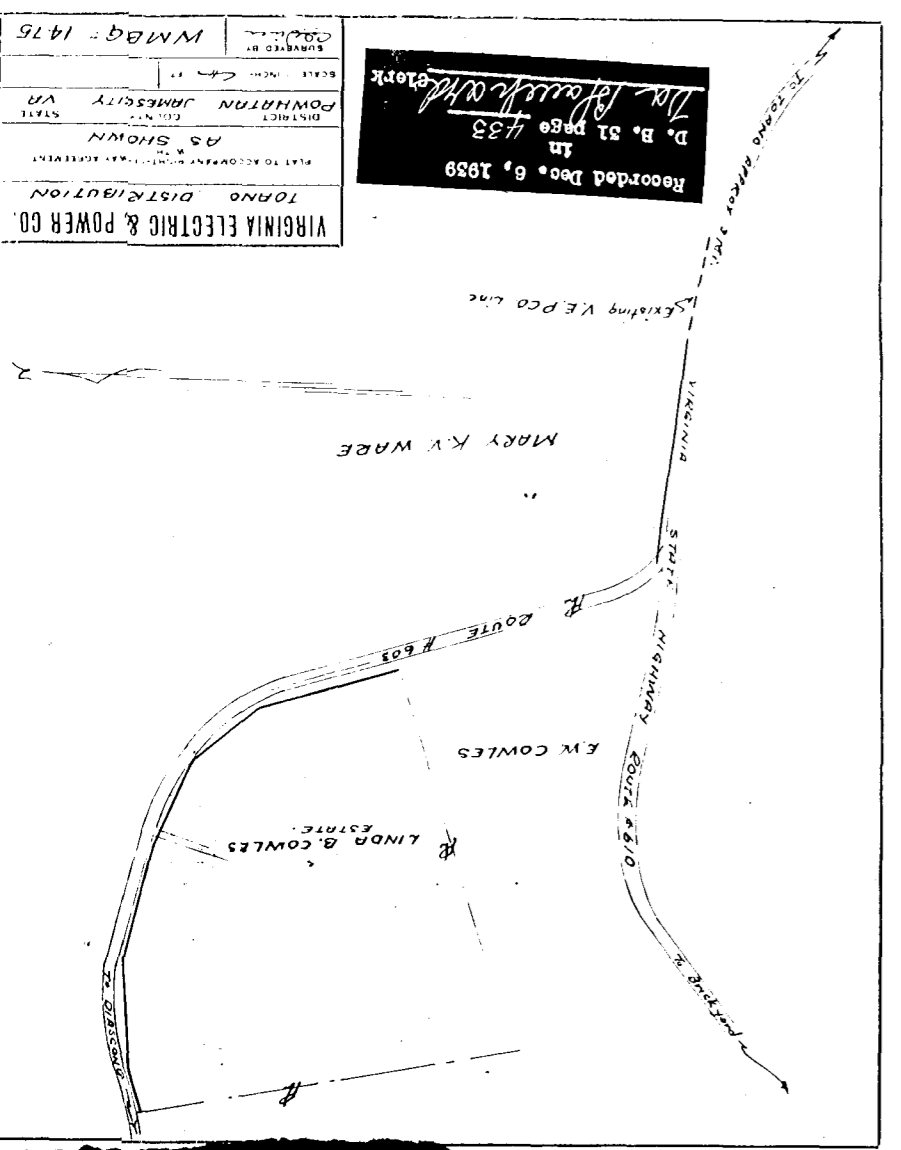
Recorded Dec. 6, 1939
in
D. B. 31 page 437
Va. Blawie Clerk

VIRGINIA ELECTRIC & POWER CO.
Rosseau Extension
PLAT TO ACCOMPANY RIGHT-OF-WAY AGREEMENT WITH
Harry Simonton
DISTRICT COUNTY STATE
Jamesstown James City Va.
SCALE: 1 INCH = 60 FT.
SURVEYED BY
C.W.H. WMBG #1499



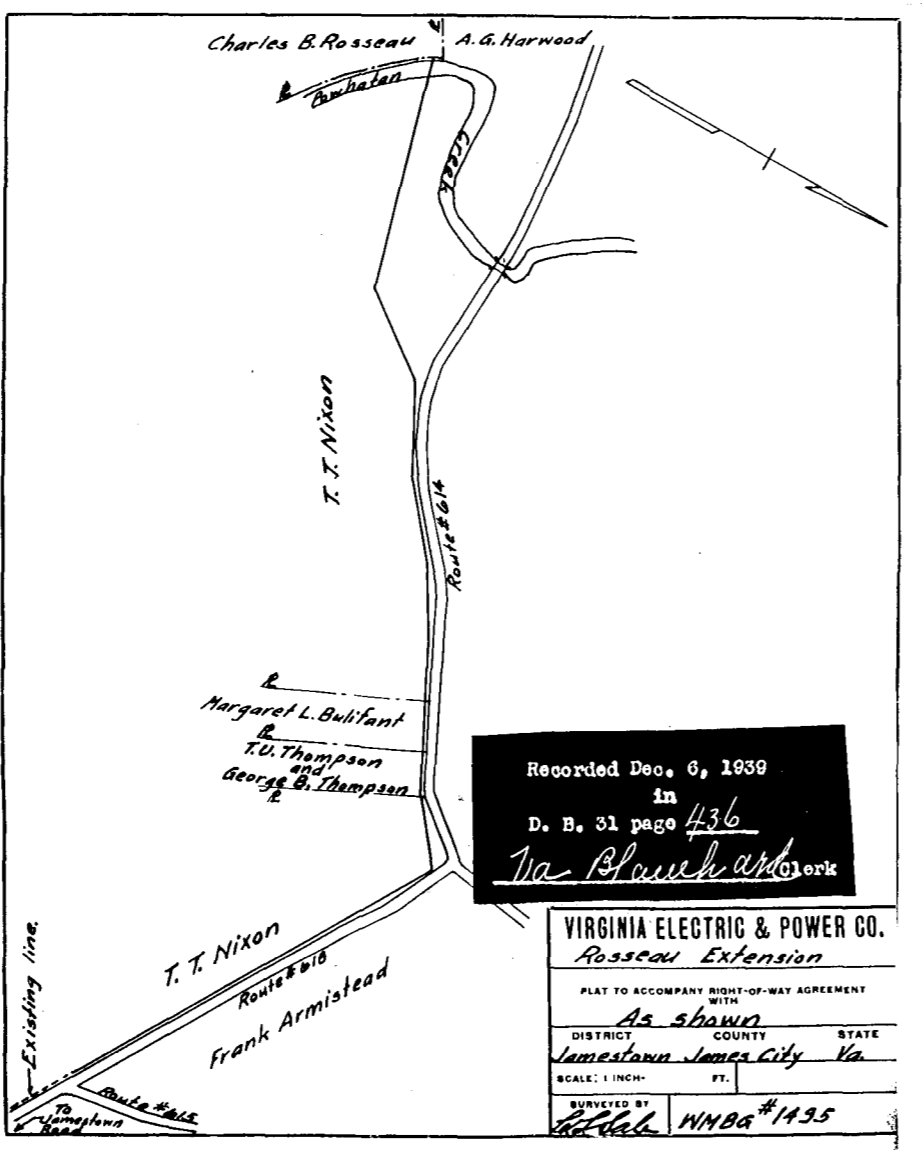
Recorded Dec. 6, 1939
in
D. B. 31 page 438
Va. Blawie Clerk

VIRGINIA ELECTRIC & POWER CO.
Rosseau Extension
PLAT TO ACCOMPANY RIGHT-OF-WAY AGREEMENT WITH
As shown
DISTRICT COUNTY STATE
Jamesstown James City Va.
SCALE: 1 INCH = 60 FT.
SURVEYED BY
C.W.H. WMBG #1495



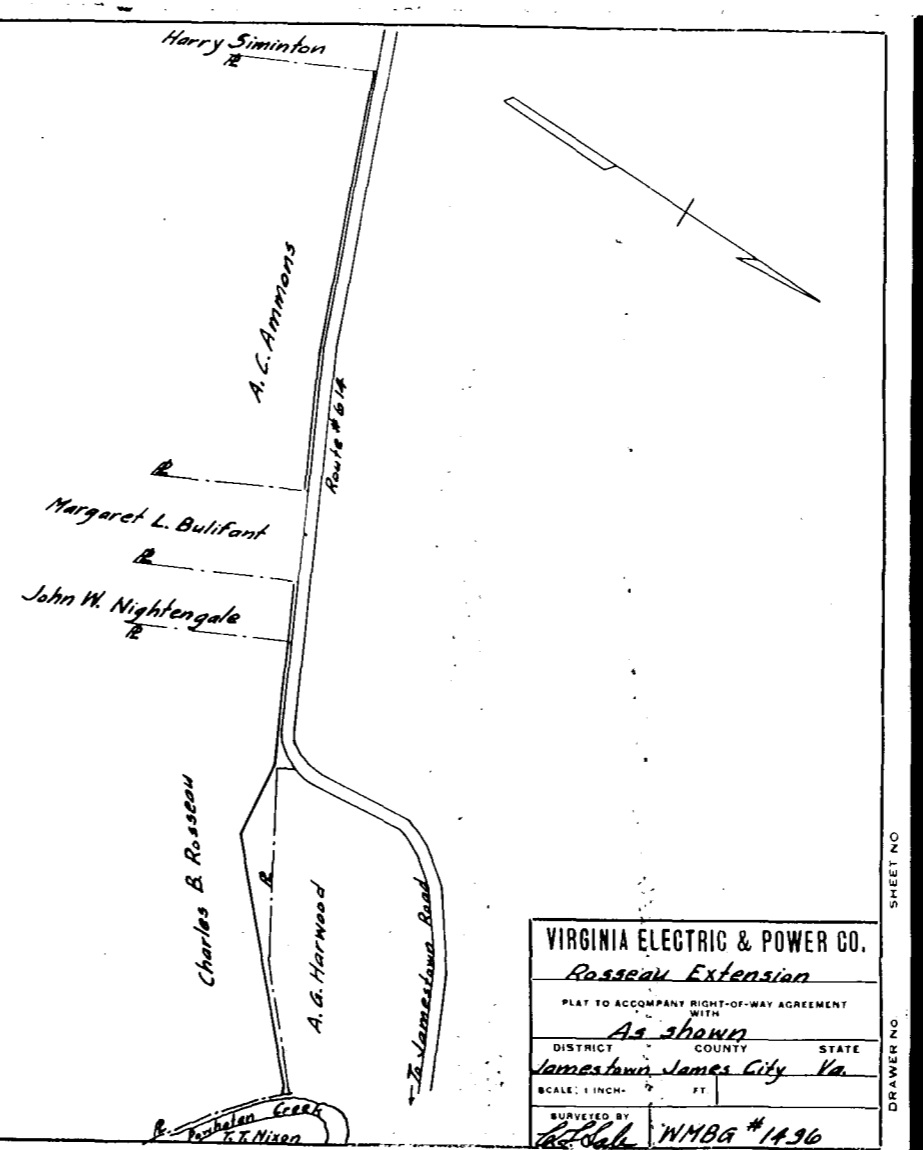
Recorded Dec. 6, 1939
in
D. B. 31 page 433
Va. Blawie Clerk

VIRGINIA ELECTRIC & POWER CO.
TOWN DISTRICT
PLAT TO ACCOMPANY RIGHT-OF-WAY AGREEMENT WITH
AS SHOWN
DISTRICT COUNTY STATE
JAMESSTOWN JAMES CITY VA.
SCALE: 1 INCH = 60 FT.
COMD BY
WMBG #1475

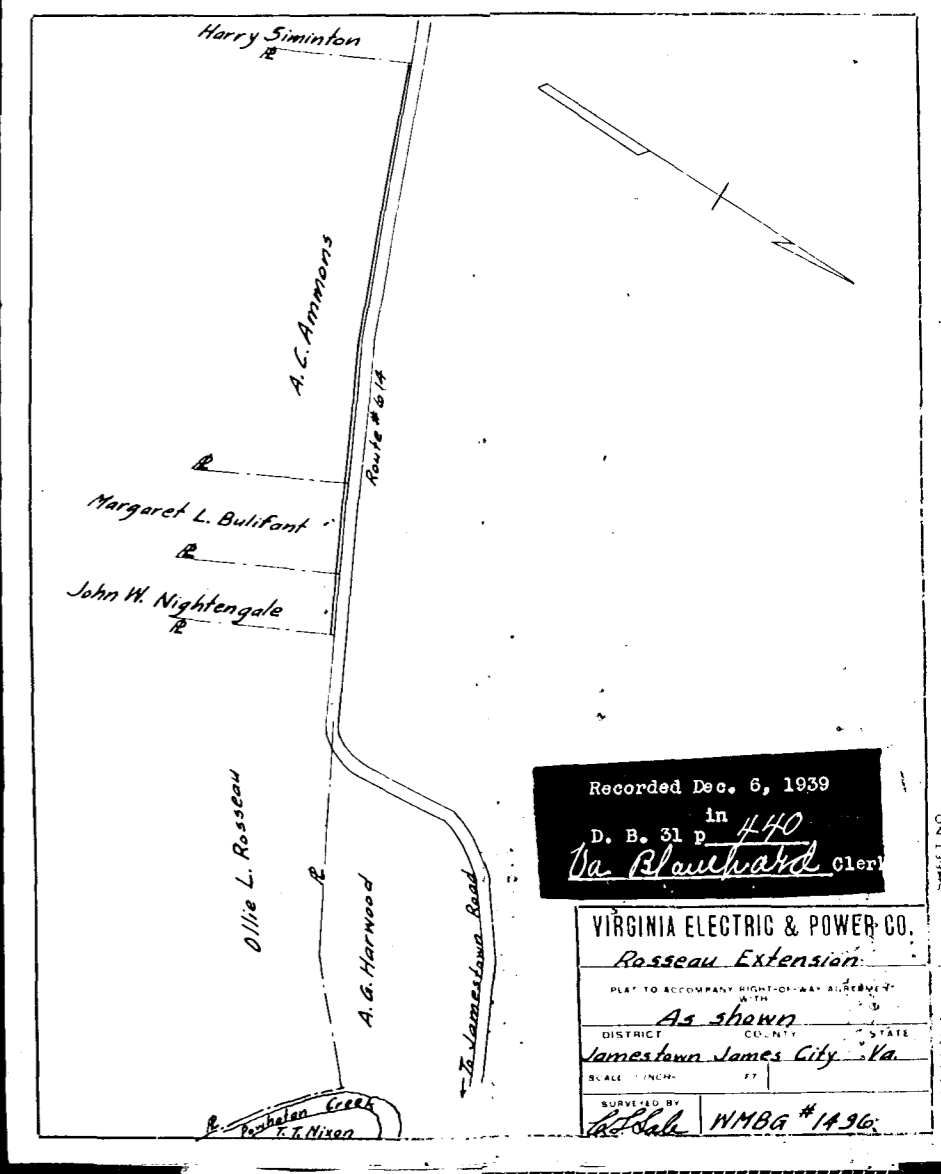


Recorded Dec. 6, 1939
in
D. B. 31 page 436
Va. Blawie Clerk

VIRGINIA ELECTRIC & POWER CO.
Rosseau Extension
PLAT TO ACCOMPANY RIGHT-OF-WAY AGREEMENT WITH
As shown
DISTRICT COUNTY STATE
Jamesstown James City Va.
SCALE: 1 INCH = 60 FT.
SURVEYED BY
C.W.H. WMBG #1495



VIRGINIA ELECTRIC & POWER CO.
Rosseau Extension
PLAT TO ACCOMPANY RIGHT-OF-WAY AGREEMENT WITH
As shown
DISTRICT COUNTY STATE
Jamesstown James City Va.
SCALE: 1 INCH = 60 FT.
SURVEYED BY
C.W.H. WMBG #1496



Recorded Dec. 6, 1939
in
D. B. 31 page 440
Va. Blawie Clerk

VIRGINIA ELECTRIC & POWER CO.
Rosseau Extension
PLAT TO ACCOMPANY RIGHT-OF-WAY AGREEMENT WITH
As shown
DISTRICT COUNTY STATE
Jamesstown James City Va.
SCALE: 1 INCH = 60 FT.
SURVEYED BY
C.W.H. WMBG #1496