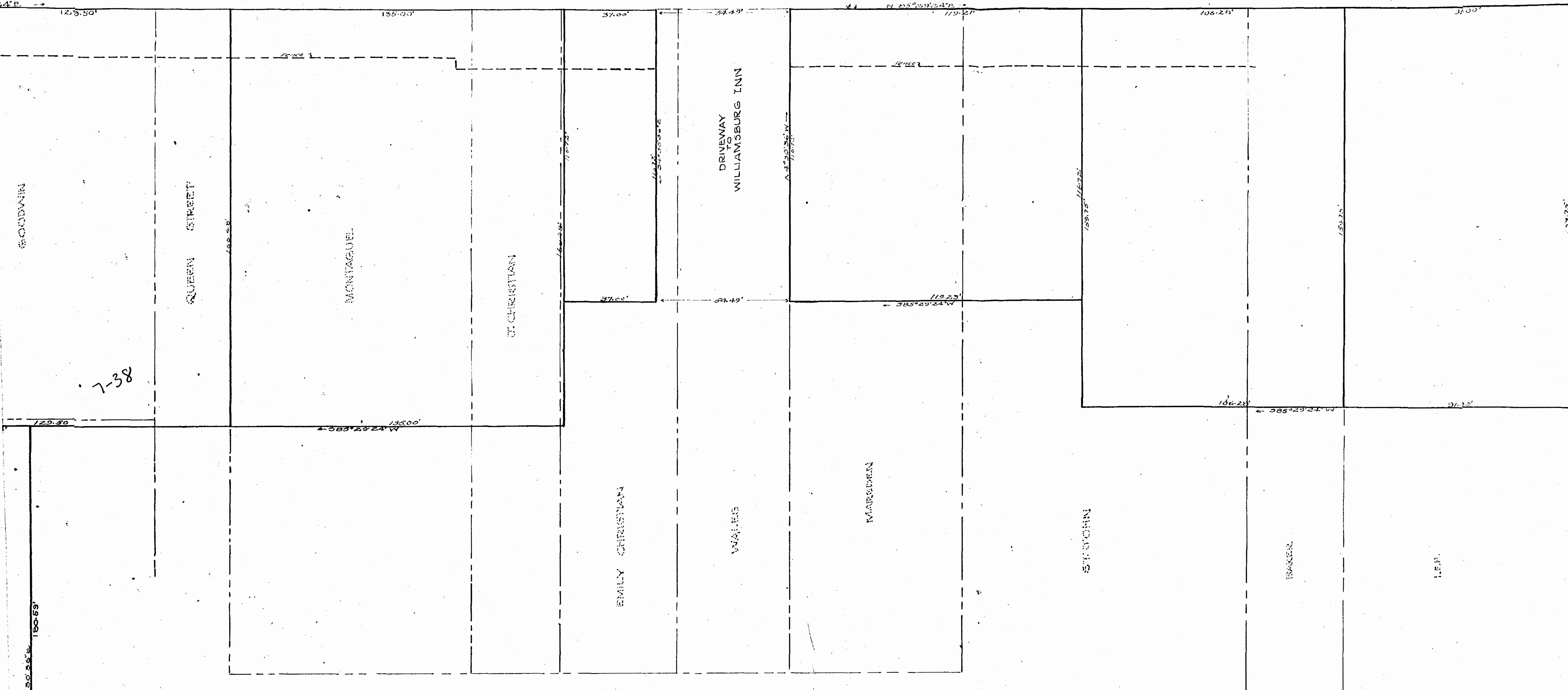


STREET



7-38

WILLIAMSBURG INN

Recorded March 5, 1939
by Stauchard, Clerk

WILLIAMSBURG RESTORATION
INCORPORATED

PLAT SHOWING ORIGINAL AND EXISTING
PROPERTY LINES BLOCKS NO. 21 & 22
SCALE 1" = 20' SURVEYED JANUARY 10, 1939
FOR DIMENSIONS OF ORIGINAL LOTS SEE PLAT
BY WOODRILL DATED 1929

