

VIRGINIA ELECTRIC & POWER CO.
WILLIAMSBURG DISTRIBUTION

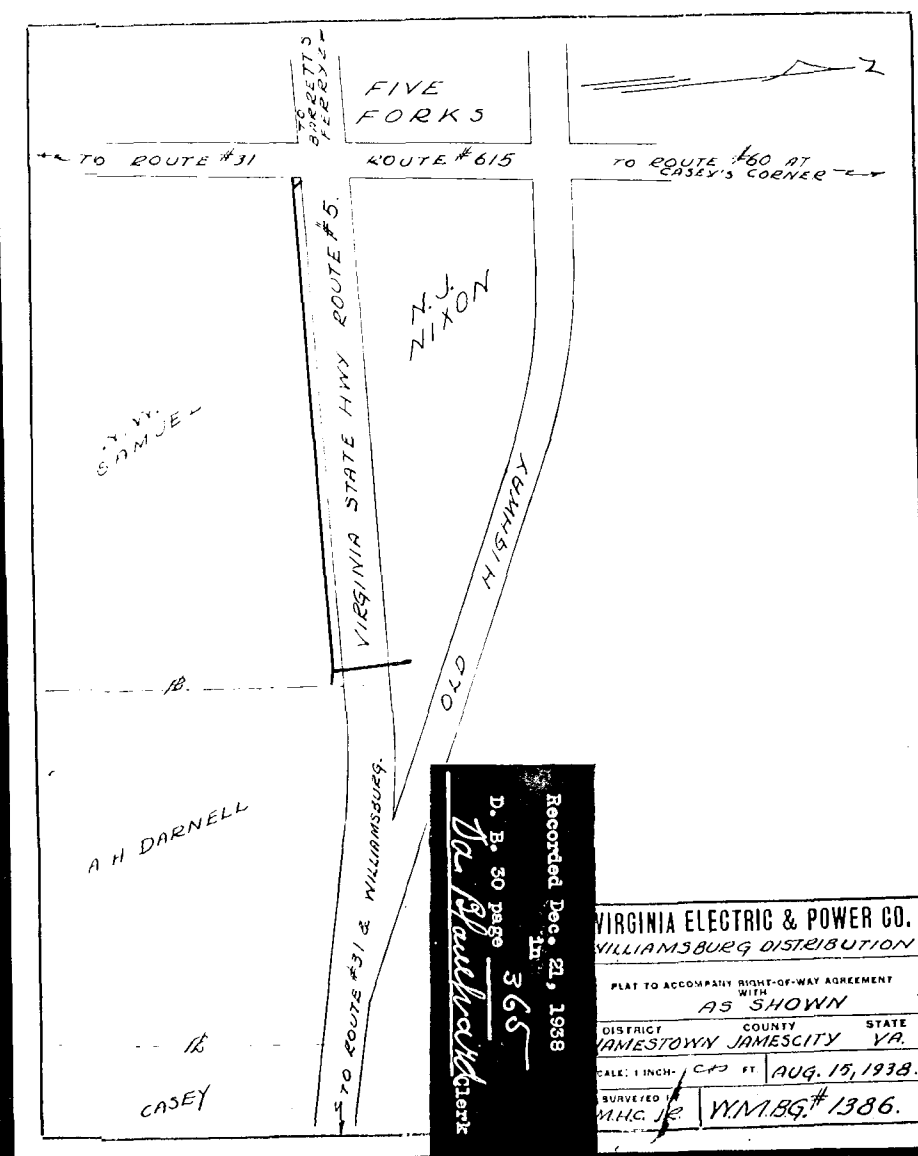
PLAT TO ACCOMPANY RIGHT-OF-WAY AGREEMENT WITH

W. S. MURPHY

DISTRICT COUNTY STATE
JAMESTOWN JAMES CITY VA.

SCALE: 1 INCH = 100 FT. AUG 19 1938

SURVEYED BY
M.H.C.J.R. WMBG #1389



VIRGINIA ELECTRIC & POWER CO.
WILLIAMSBURG DISTRIBUTION

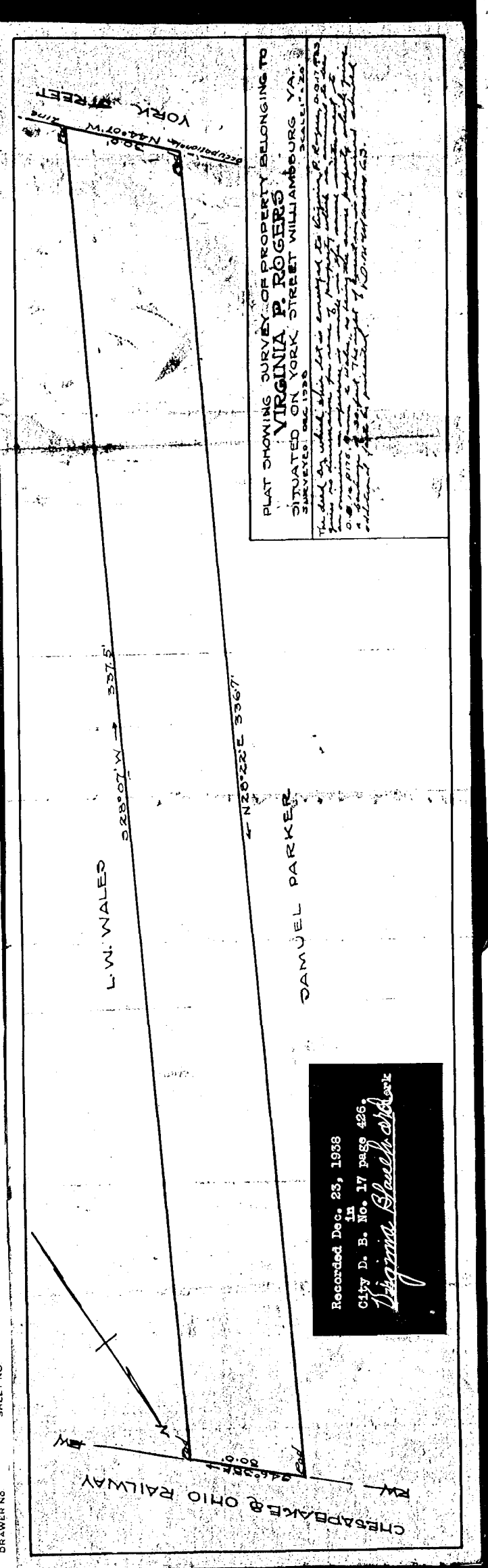
PLAT TO ACCOMPANY RIGHT-OF-WAY AGREEMENT WITH

AS SHOWN

DISTRICT COUNTY STATE
JAMESTOWN JAMES CITY VA.

SCALE: 1 INCH = 100 FT. AUG. 19, 1938

SURVEYED BY
M.H.C.J.R. WMBG #1386



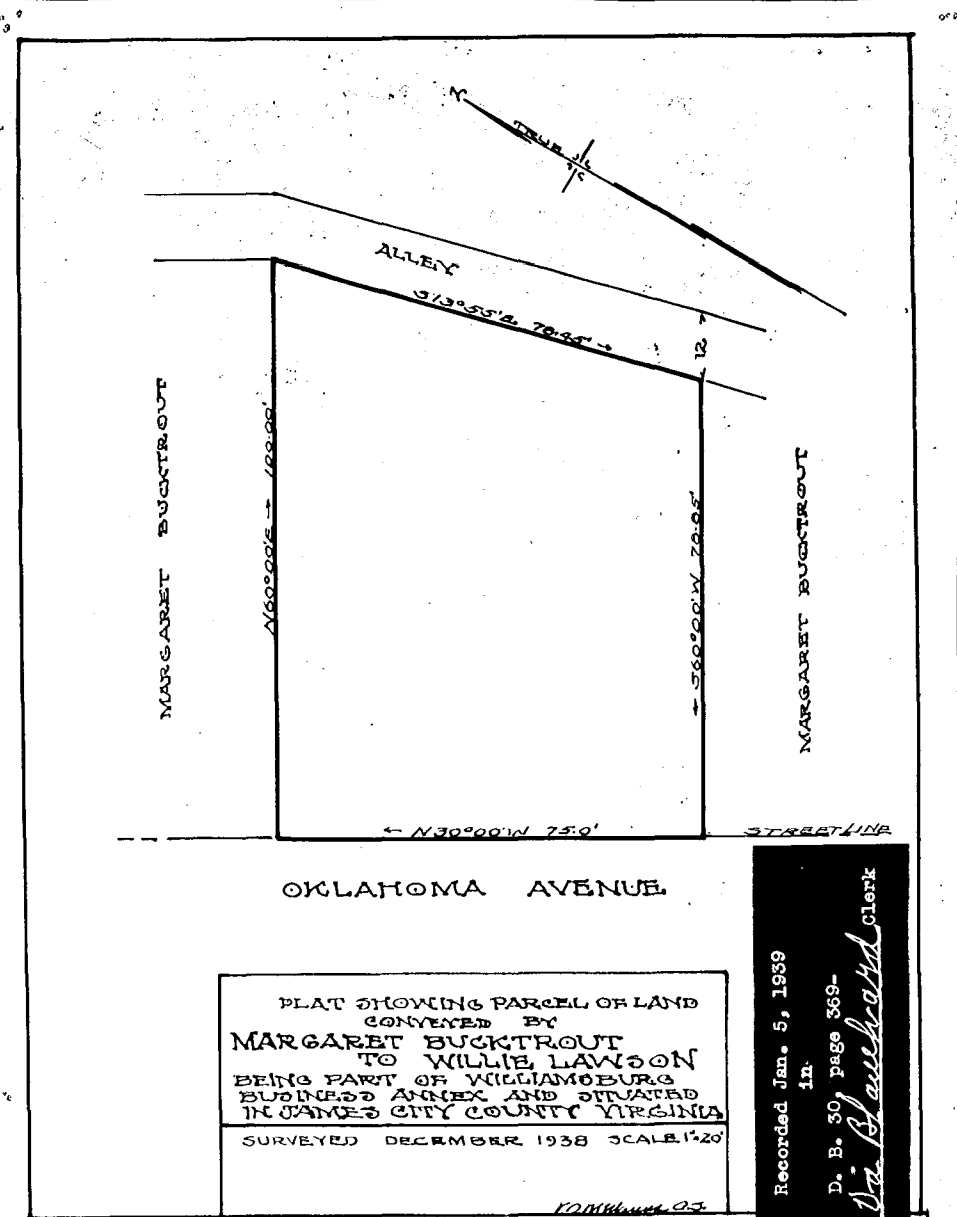
PLAT SHOWING SURVEY OF PROPERTY BELONGING TO

VIRGINIA P. ROGERS

SITUATED ON YORK STREET WILLIAMSBURG VA.

SURVEYED DEC 1938 SCALE 1/2" = 20'

The land on which this plat is shown is owned by Virginia P. Rogers and is being conveyed to the City of Williamsburg for the purpose of widening York Street from 20 feet to 30 feet.

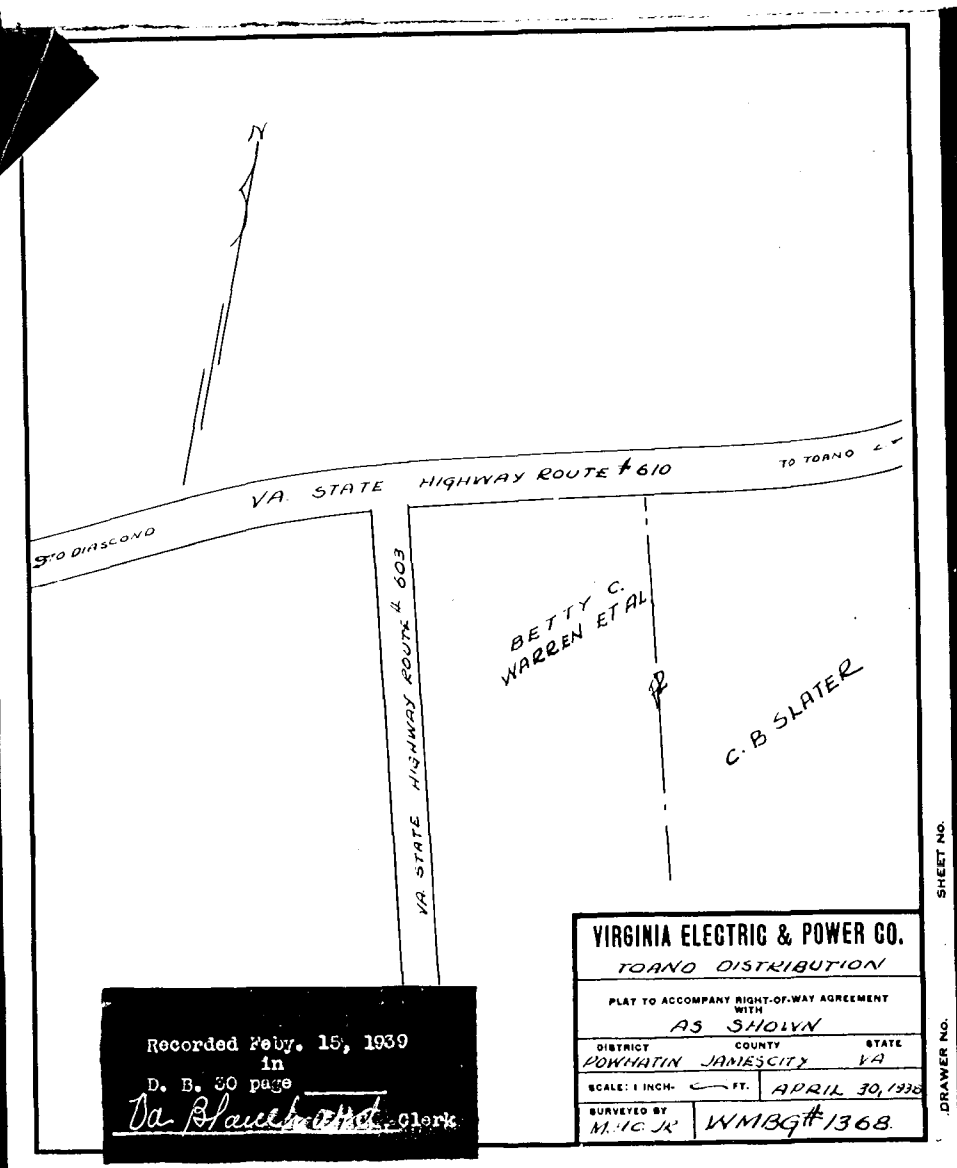


PLAT SHOWING PARCEL OF LAND CONVEYED BY

MARGARET BUCKTROUT TO WILLIE LAWSON

BEING PART OF WILLIAMSBURG BUSINESS ANNEX AND SITUATED IN JAMES CITY COUNTY VIRGINIA

SURVEYED DECEMBER 1938 SCALE 1/2" = 20'



VIRGINIA ELECTRIC & POWER CO.
TOANO DISTRIBUTION

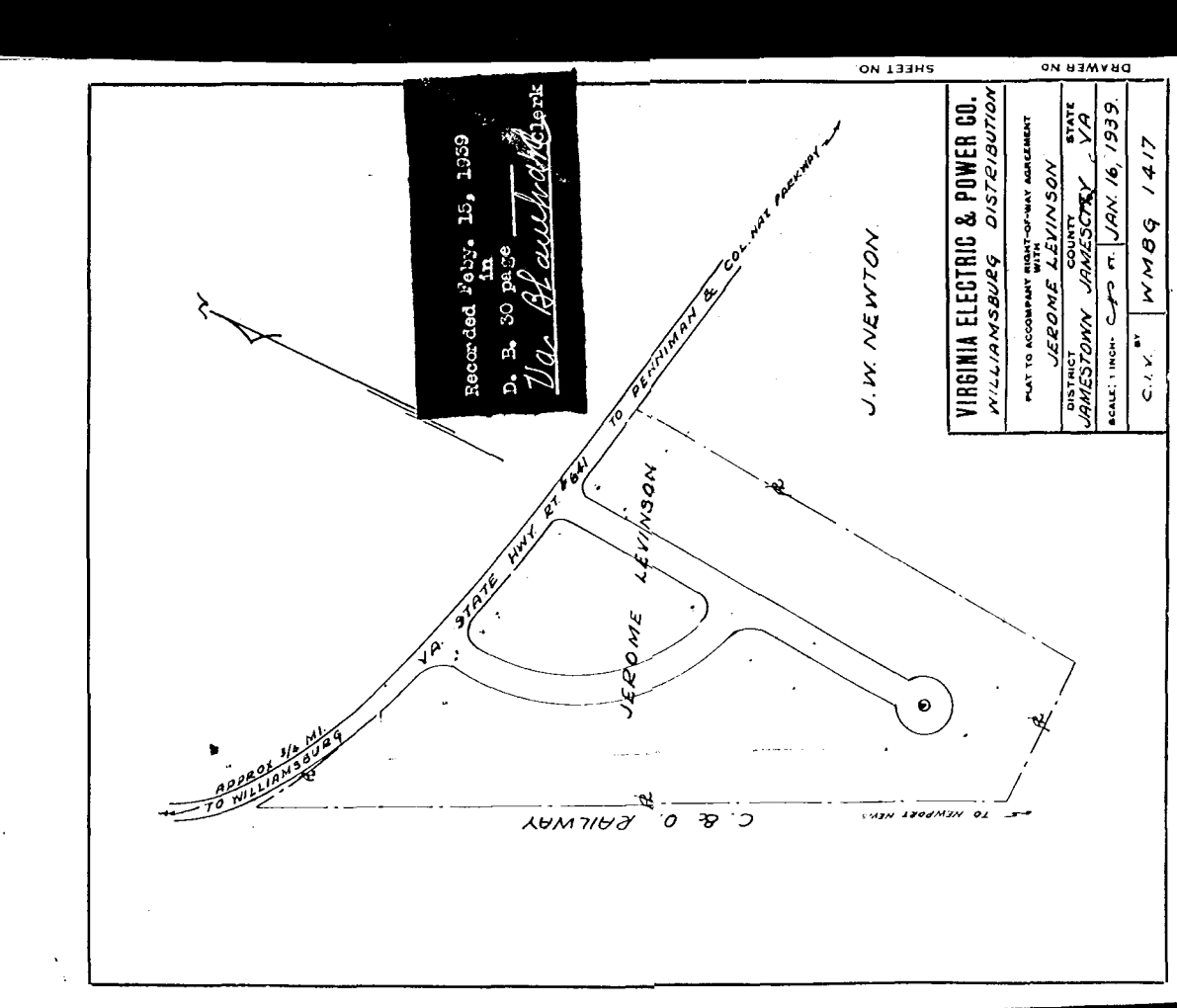
PLAT TO ACCOMPANY RIGHT-OF-WAY AGREEMENT WITH

AS SHOWN

DISTRICT COUNTY STATE
POWATON JAMES CITY VA.

SCALE: 1 INCH = 100 FT. APRIL 30 1939

SURVEYED BY
M.H.C.J.R. WMBG #1368



VIRGINIA ELECTRIC & POWER CO.
WILLIAMSBURG DISTRIBUTION

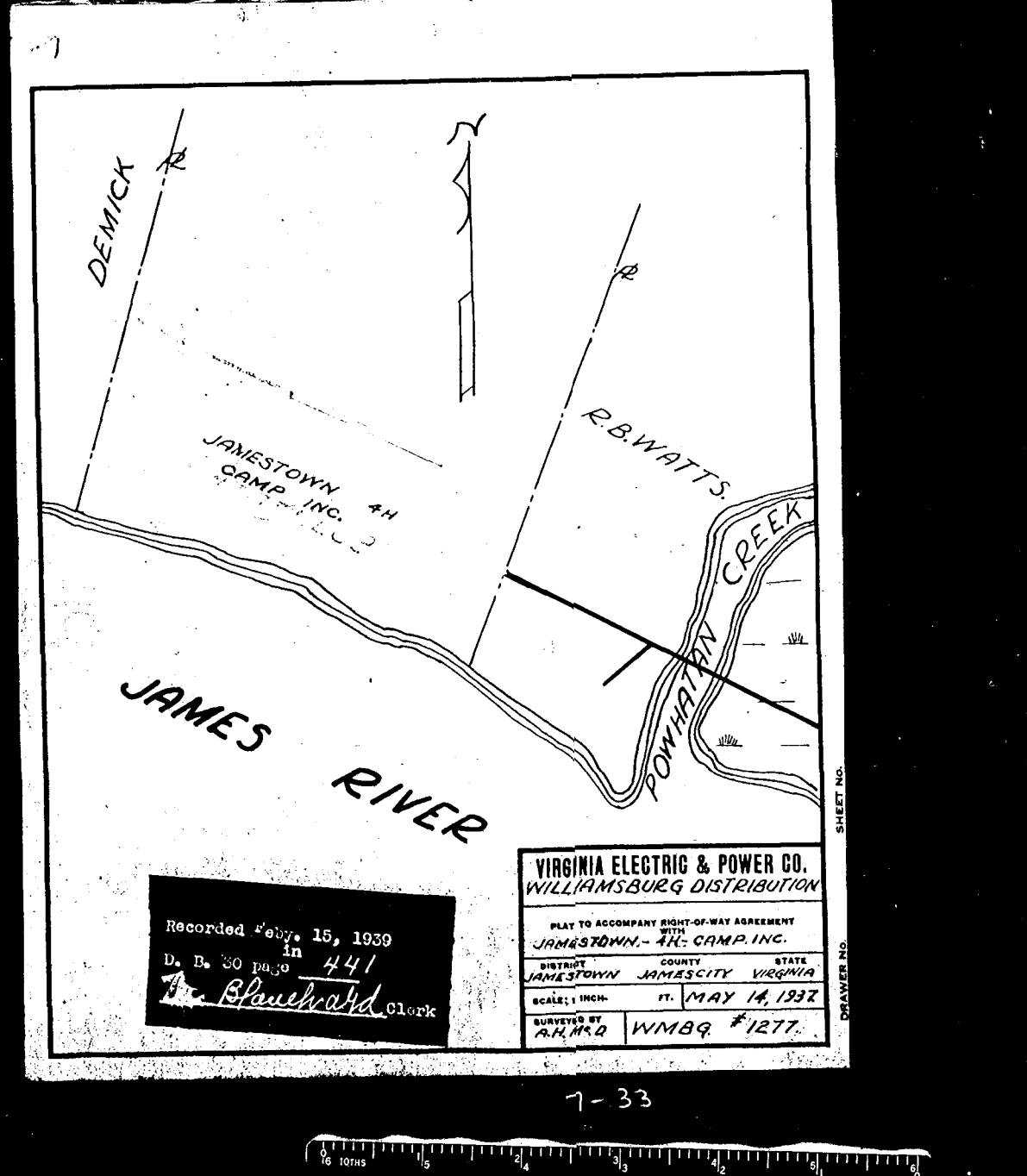
PLAT TO ACCOMPANY RIGHT-OF-WAY AGREEMENT WITH

JEROME LEVINSON

DISTRICT COUNTY STATE
JAMESTOWN JAMES CITY VA.

SCALE: 1 INCH = 100 FT. JAN. 16, 1939

SURVEYED BY
M.H.C.J.R. WMBG #1417



VIRGINIA ELECTRIC & POWER CO.
WILLIAMSBURG DISTRIBUTION

PLAT TO ACCOMPANY RIGHT-OF-WAY AGREEMENT WITH

JAMESTOWN - A.H. CAMP, INC.

DISTRICT COUNTY STATE
JAMESTOWN JAMES CITY VIRGINIA

SCALE: 1 INCH = 100 FT. MAY 14, 1937

SURVEYED BY
A.H.M.Q. WMBG #1277

