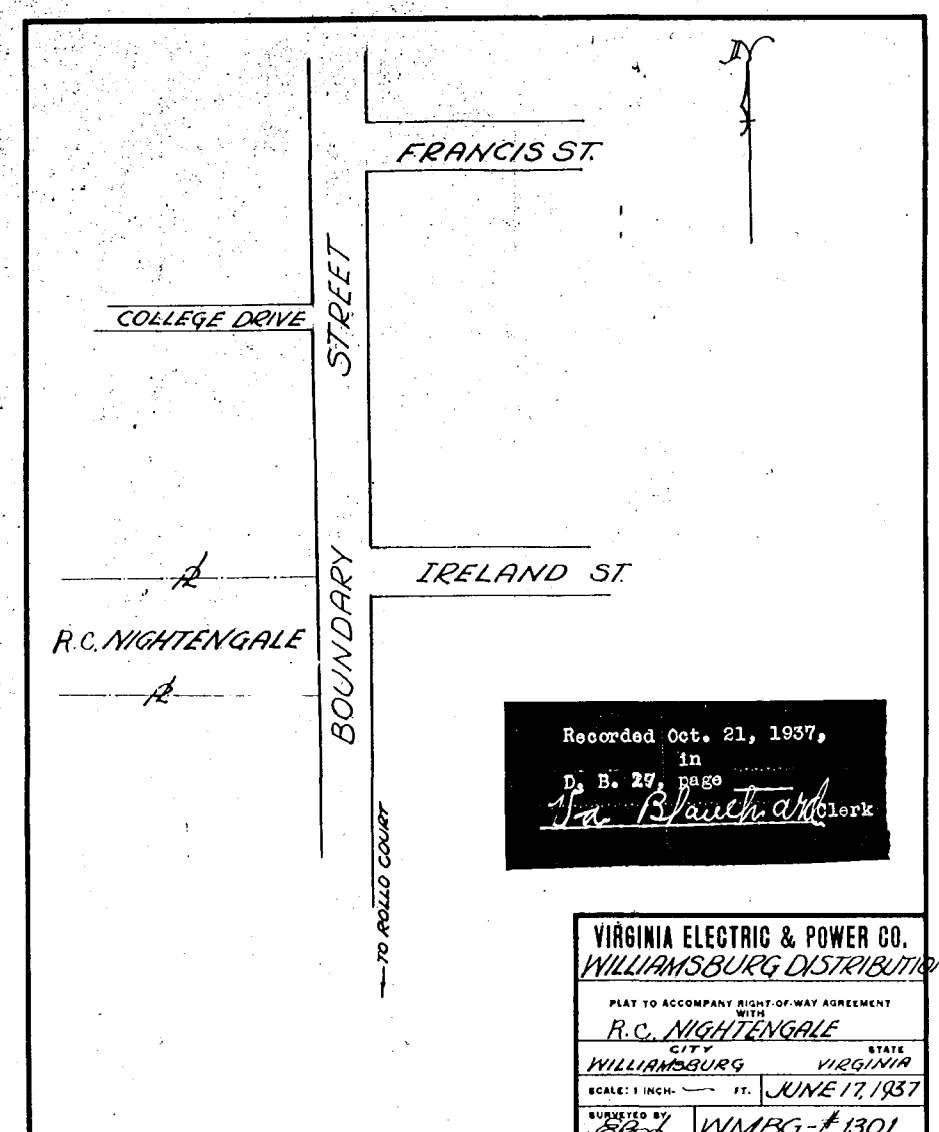


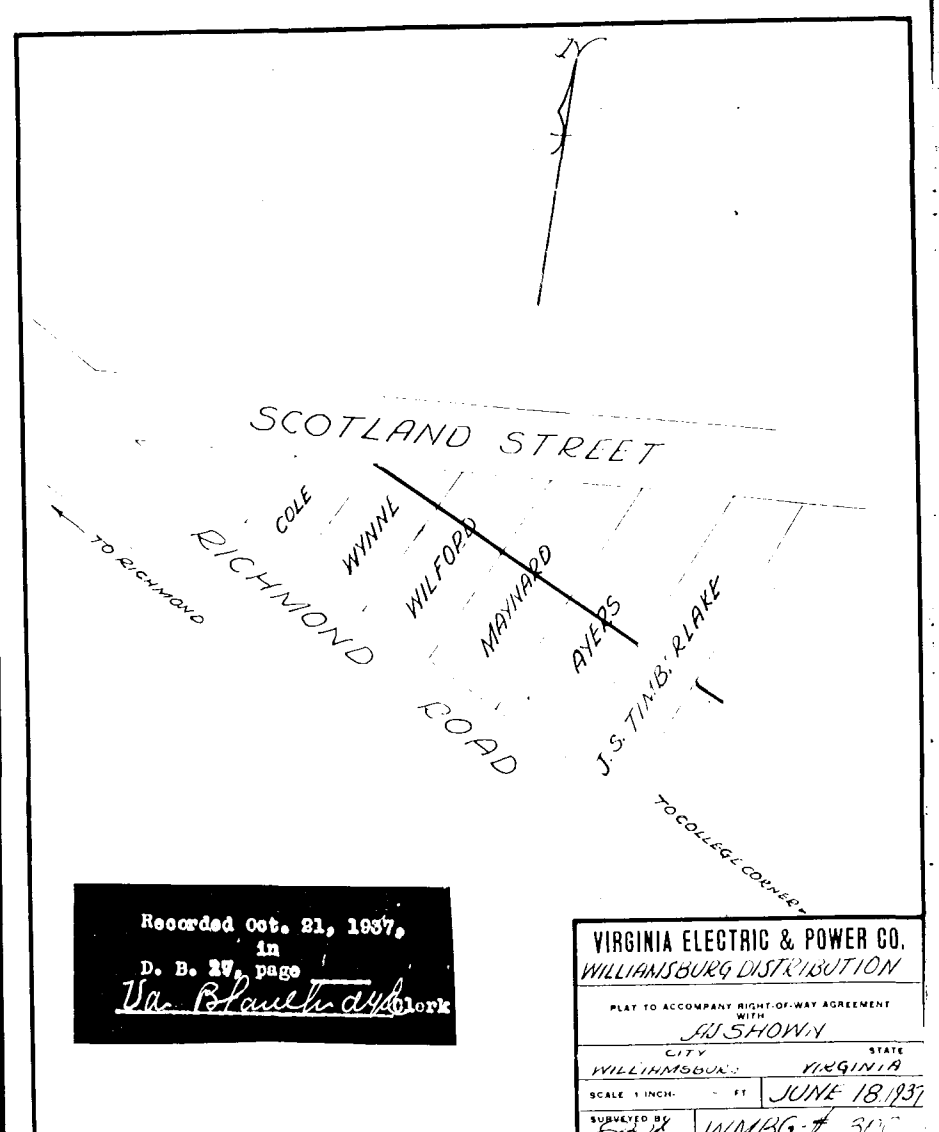
Recorded Oct. 21, 1937  
in  
D. B. 17, page 96  
Va. Blauhaard Clerk

VIRGINIA ELECTRIC & POWER CO.  
WILLIAMSBURG DISTRIBUTION  
PLAT TO ACCOMPANY RIGHT-OF-WAY AGREEMENT  
WITH  
AS SHOWN  
CITY WILLIAMSBURG STATE VIRGINIA  
SCALE: 1 INCH = 100 FT. JUNE 18, 1937  
SUBMITTED BY 6877 WMBG-#1300



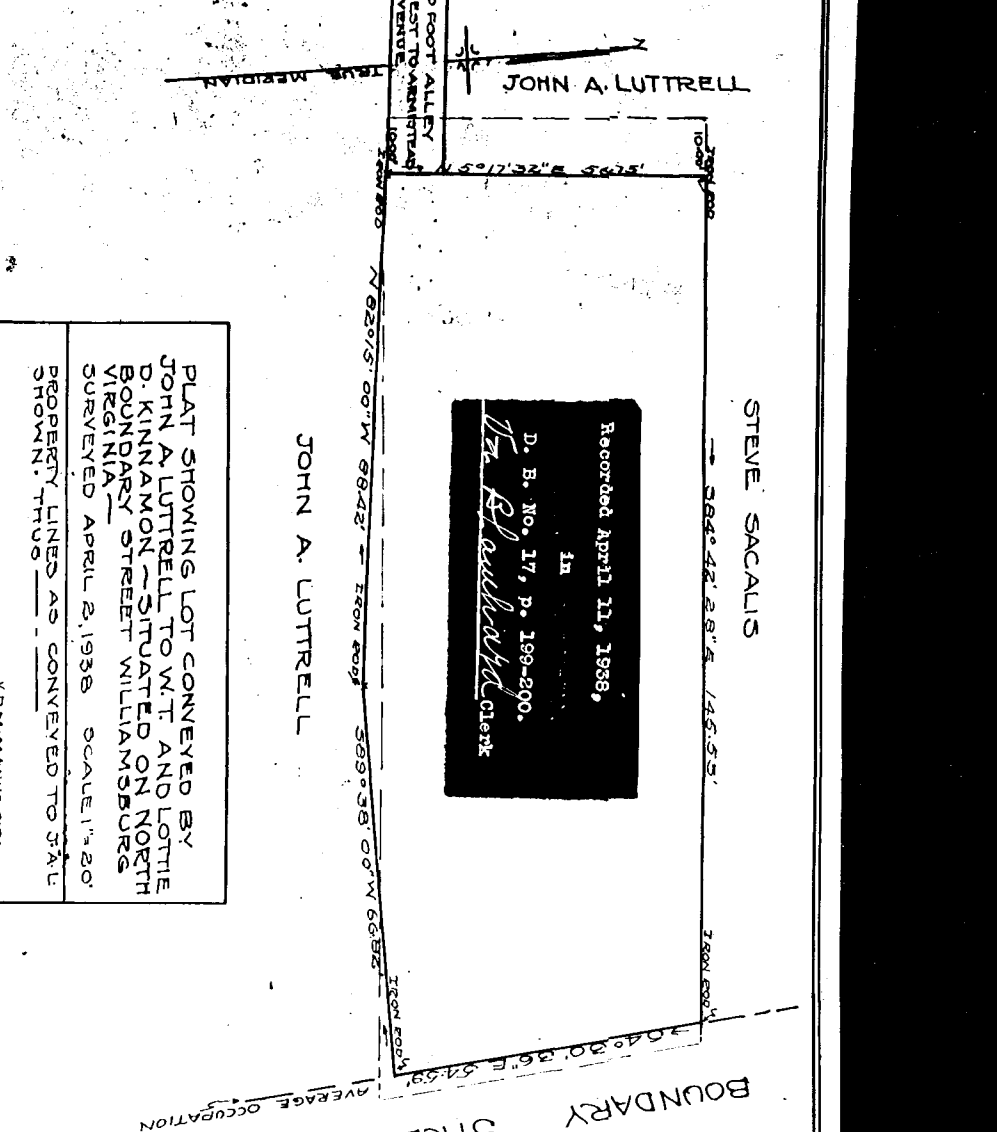
Recorded Oct. 21, 1937,  
in  
D. B. 27, page  
Va. Blauhaard Clerk

VIRGINIA ELECTRIC & POWER CO.  
WILLIAMSBURG DISTRIBUTION  
PLAT TO ACCOMPANY RIGHT-OF-WAY AGREEMENT  
WITH  
R.C. NIGHTENGALE  
CITY WILLIAMSBURG STATE VIRGINIA  
SCALE: 1 INCH = 100 FT. JUNE 17, 1937  
SUBMITTED BY 6877 WMBG-#1301



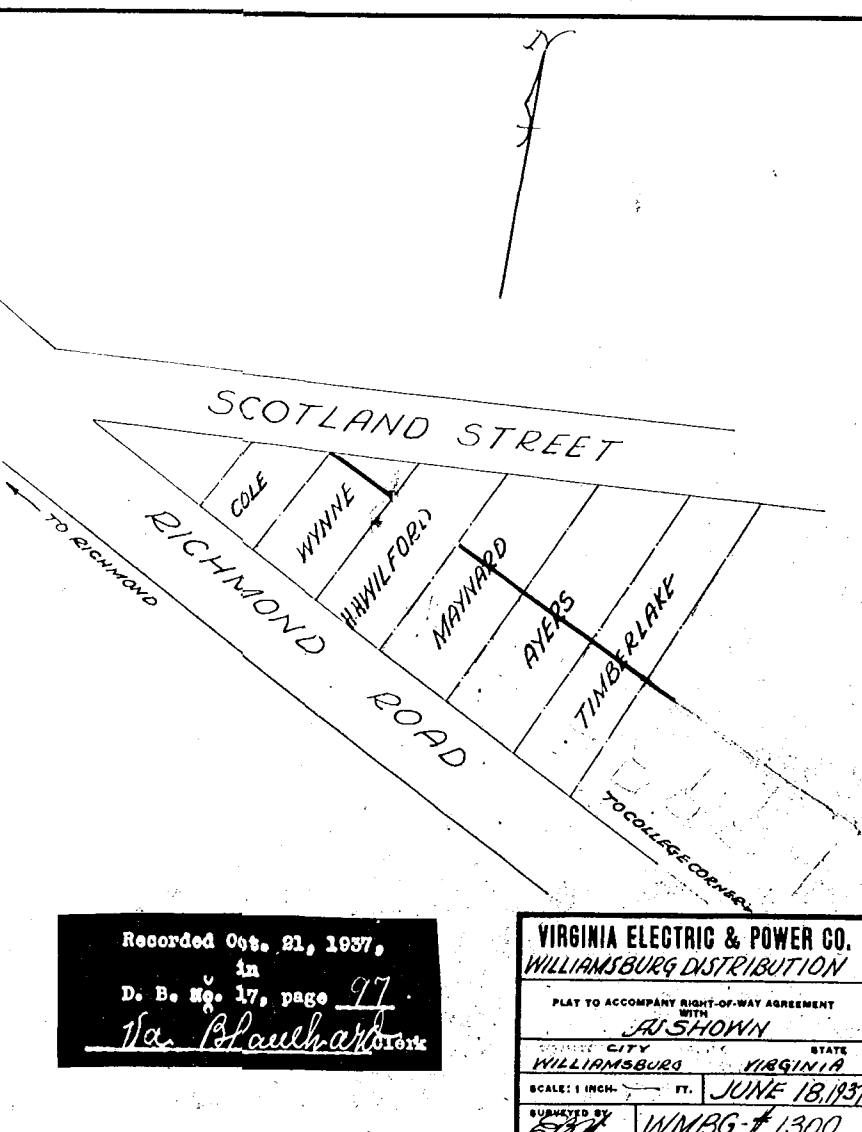
Recorded Oct. 21, 1937,  
in  
D. B. 27, page  
Va. Blauhaard Clerk

VIRGINIA ELECTRIC & POWER CO.  
WILLIAMSBURG DISTRIBUTION  
PLAT TO ACCOMPANY RIGHT-OF-WAY AGREEMENT  
WITH  
AS SHOWN  
CITY WILLIAMSBURG STATE VIRGINIA  
SCALE: 1 INCH = 100 FT. JUNE 18, 1937  
SUBMITTED BY 6877 WMBG-#1301



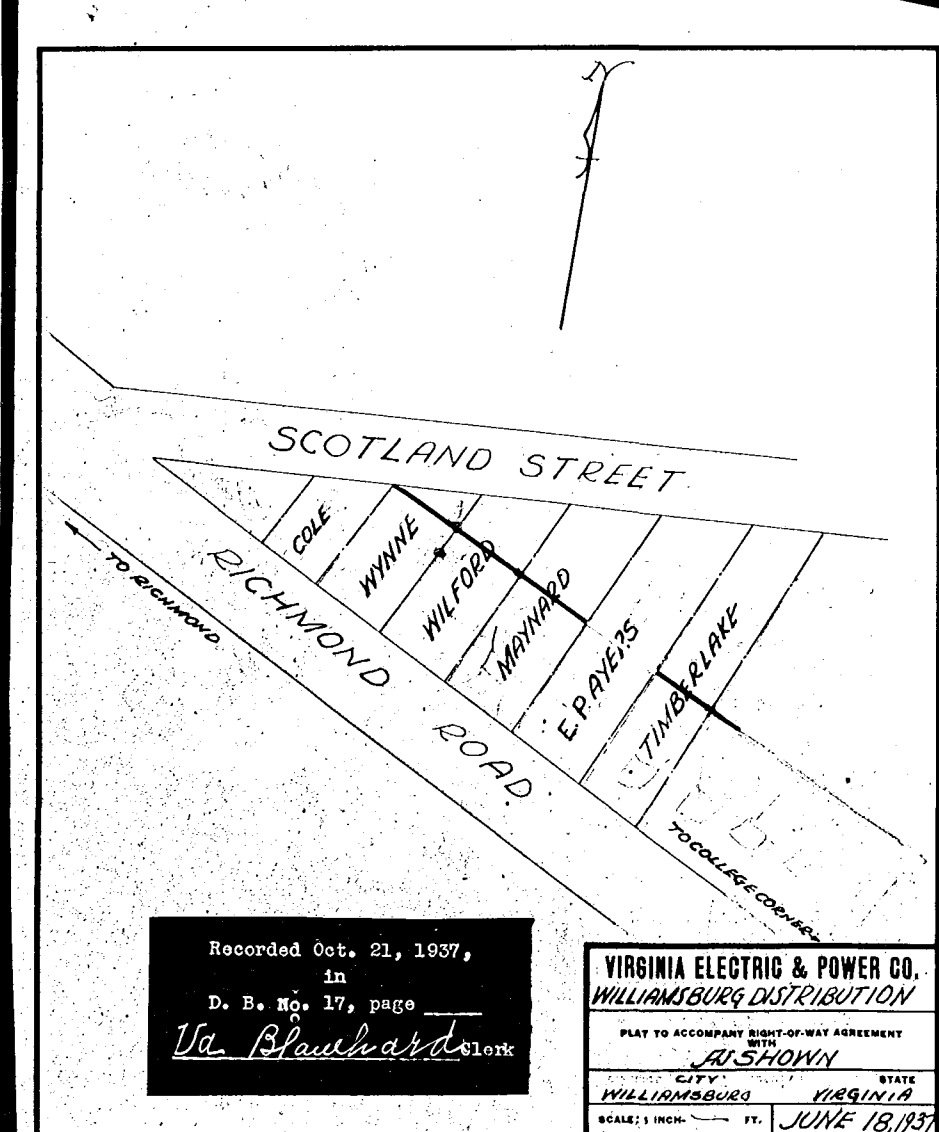
Recorded April 17, 1938,  
in  
D. B. No. 17, p. 189-200.  
Va. Blauhaard Clerk

PLAT SHOWING LOT CONVEYED BY  
JOHN A. LUTTRELL TO W.T. AND LOTTIE  
D. KINNAMON SITUATED ON NORTH  
BOUNDARY STREET WILLIAMSBURG  
VIRGINIA  
SURVEYED APRIL 2, 1938 SCALE 1"=20'  
PROPERTY LINED AS CONVEYED TO S.T.U.  
PROPERTY TRUS.



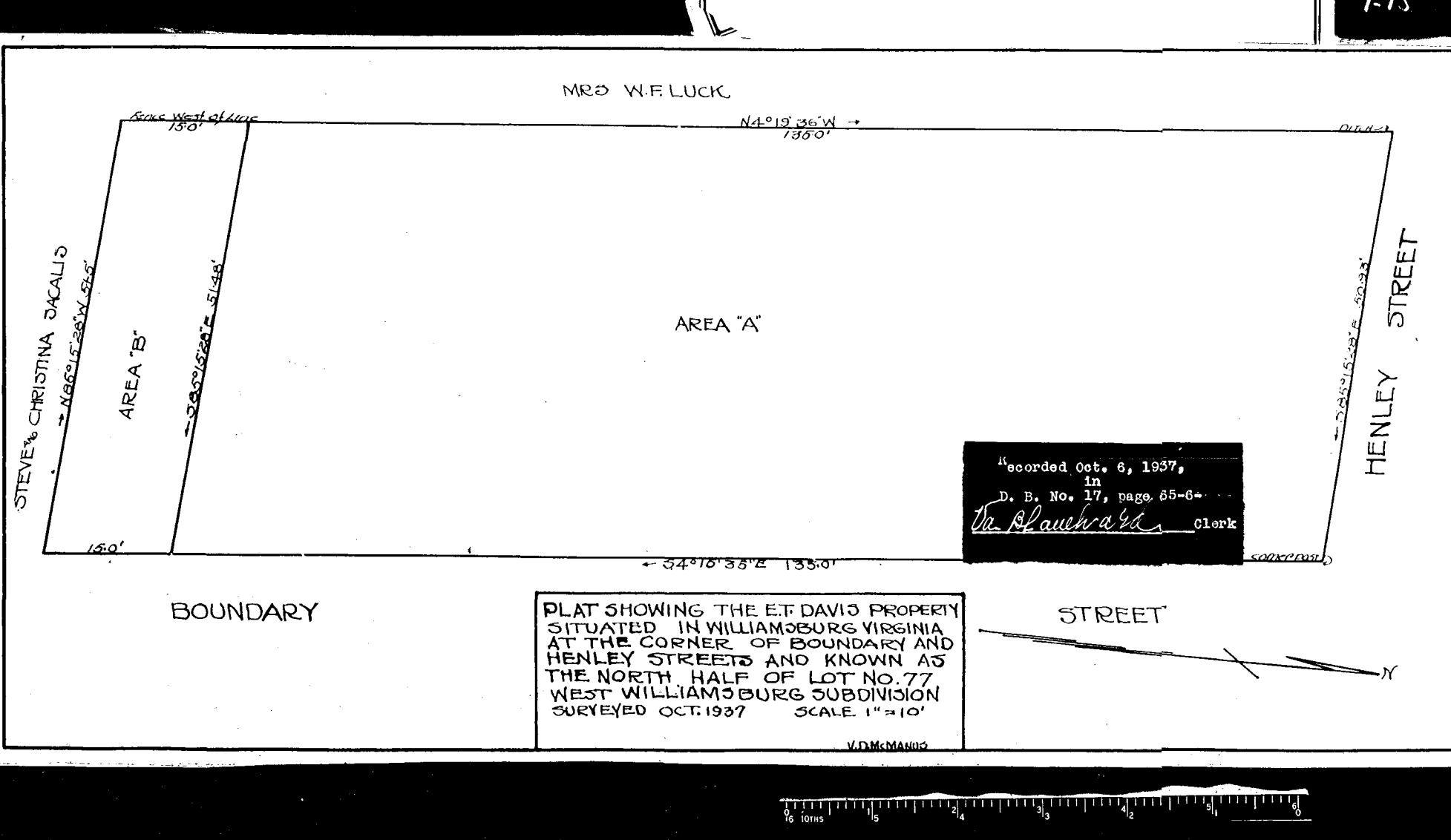
Recorded Oct. 21, 1937,  
in  
D. B. No. 17, page 97  
Va. Blauhaard Clerk

VIRGINIA ELECTRIC & POWER CO.  
WILLIAMSBURG DISTRIBUTION  
PLAT TO ACCOMPANY RIGHT-OF-WAY AGREEMENT  
WITH  
AS SHOWN  
CITY WILLIAMSBURG STATE VIRGINIA  
SCALE: 1 INCH = 100 FT. JUNE 18, 1937  
SUBMITTED BY 6877 WMBG-#1300



Recorded Oct. 21, 1937,  
in  
D. B. No. 17, page  
Va. Blauhaard Clerk

VIRGINIA ELECTRIC & POWER CO.  
WILLIAMSBURG DISTRIBUTION  
PLAT TO ACCOMPANY RIGHT-OF-WAY AGREEMENT  
WITH  
AS SHOWN  
CITY WILLIAMSBURG STATE VIRGINIA  
SCALE: 1 INCH = 100 FT. JUNE 18, 1937  
SUBMITTED BY 6877 WMBG-#1300



Recorded Oct. 6, 1937,  
in  
D. B. No. 17, page 65-6  
Va. Blauhaard Clerk

PLAT SHOWING THE E.T. DAVID PROPERTY  
SITUATED IN WILLIAMSBURG VIRGINIA  
AT THE CORNER OF BOUNDARY AND  
HENLEY STREETS AND KNOWN AS  
THE NORTH HALF OF LOT NO. 77  
WEST WILLIAMSBURG SUBDIVISION  
SURVEYED OCT. 1937 SCALE 1"=10'

