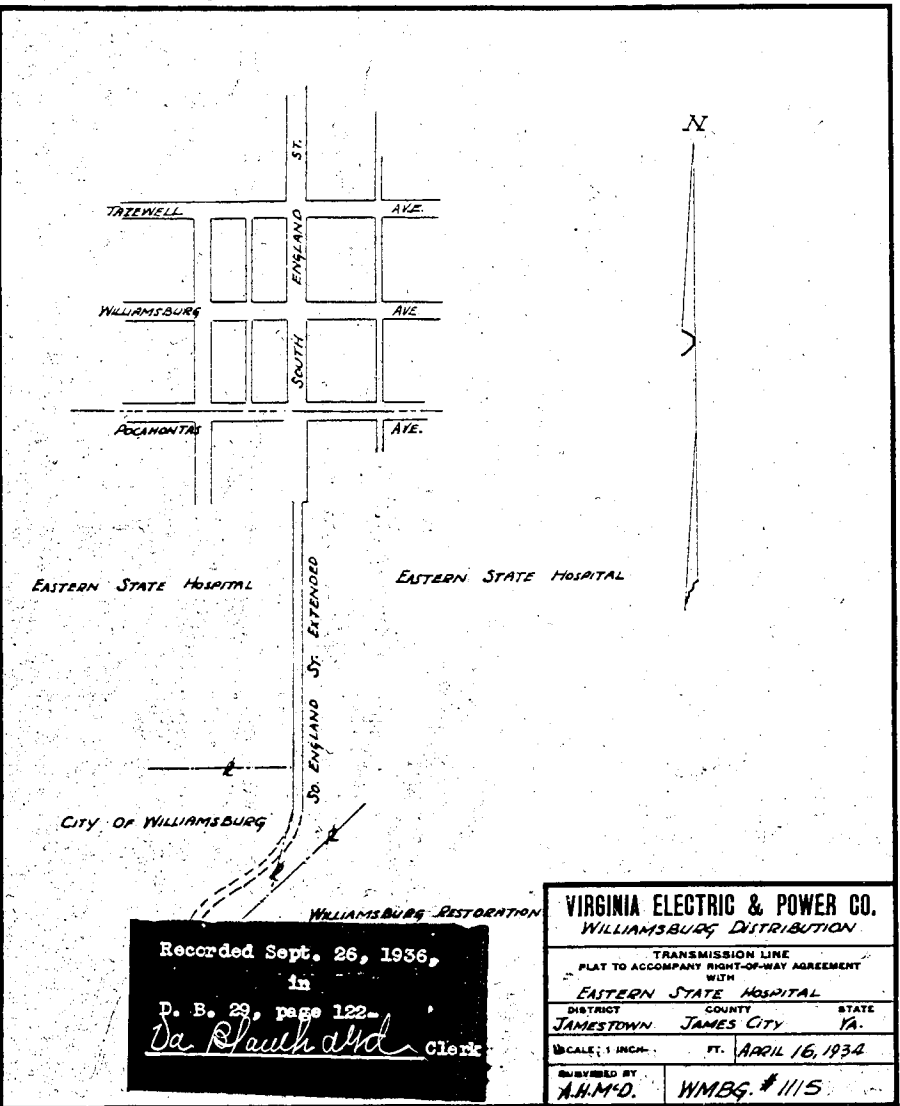


Recorded Sept. 26, 1936,  
in  
D. B. 29, p. 121-2  
*De Blauchard* Clerk

VIRGINIA ELECTRIC & POWER CO. NORGE DISTRIBUTION		
TRANSMISSION LINE PLAT TO ACCOMPANY RIGHT-OF-WAY AGREEMENT WITH THEODORE REICH		
DISTRICT	COUNTY	STATE
STONEHOUSE	JAMES CITY	VA.
SCALE: 1 INCH =	FT.	SEPT 12, 1935
SURVEYED BY A.H.M.D. WMBG #1156		

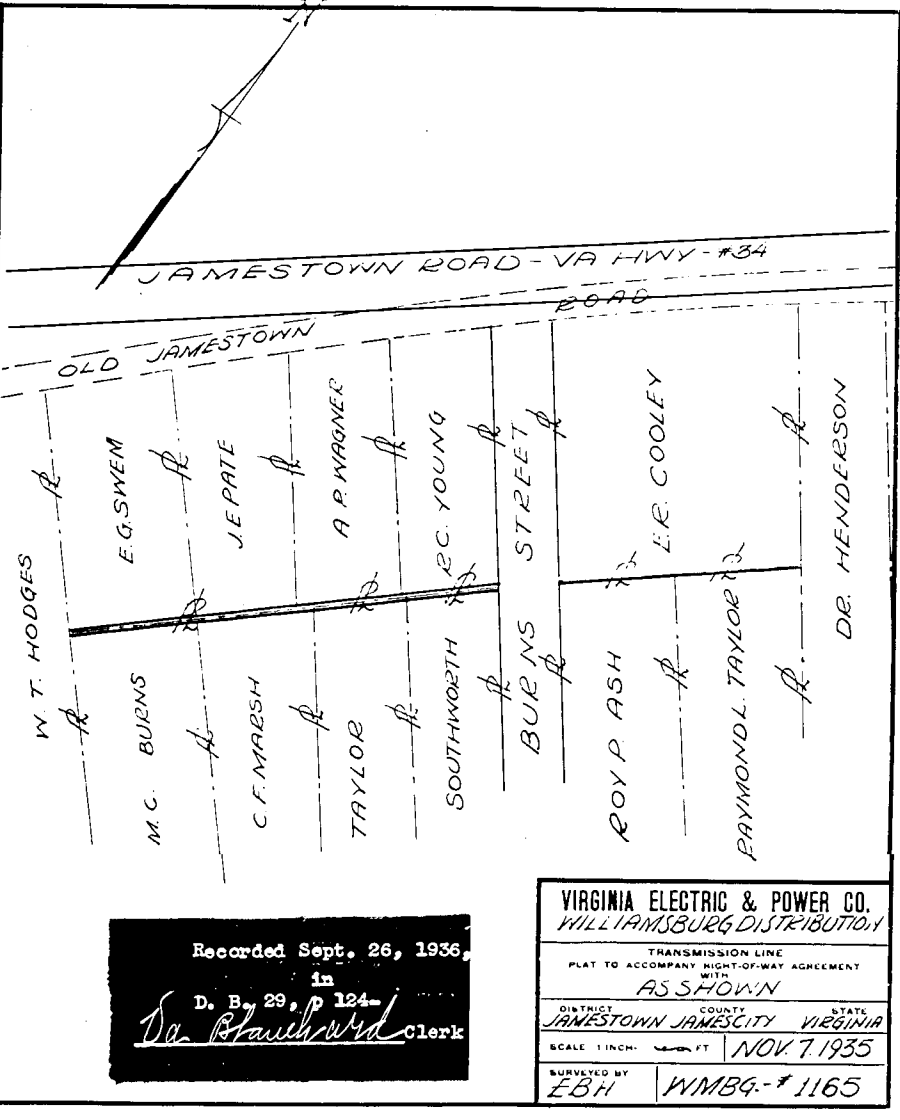
DRAWER NO. SHEET NO.



Recorded Sept. 26, 1936,  
in  
D. B. 29, page 122-  
*De Blauchard* Clerk

VIRGINIA ELECTRIC & POWER CO. WILLIAMSBURG DISTRIBUTION		
TRANSMISSION LINE PLAT TO ACCOMPANY RIGHT-OF-WAY AGREEMENT WITH EASTERN STATE HOSPITAL		
DISTRICT	COUNTY	STATE
JAMESTOWN	JAMES CITY	VA.
SCALE: 1 INCH =	FT.	APRIL 16, 1934
SURVEYED BY A.H.M.D. WMBG #1115		

DRAWER NO. SHEET NO.

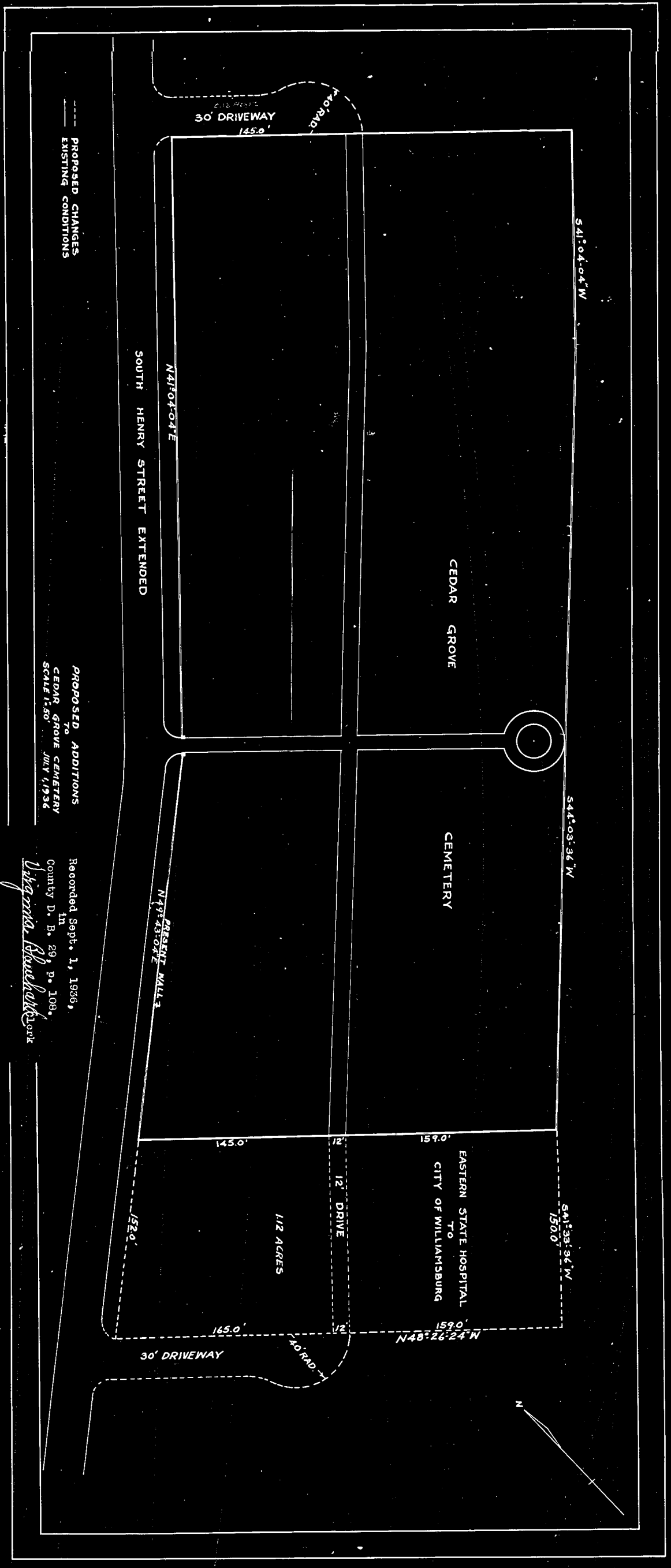


Recorded Sept. 26, 1936,  
in  
D. B. 29, p. 124-  
*De Blauchard* Clerk

VIRGINIA ELECTRIC & POWER CO. WILLIAMSBURG DISTRIBUTION		
TRANSMISSION LINE PLAT TO ACCOMPANY RIGHT-OF-WAY AGREEMENT WITH AS SHOWN		
DISTRICT	COUNTY	STATE
JAMESTOWN	JAMES CITY	VIRGINIA
SCALE: 1 INCH =	FT.	NOV 7, 1935
SURVEYED BY EBH WMBG #1165		

DRAWER NO. SHEET NO.

*1/2 cent (100)*

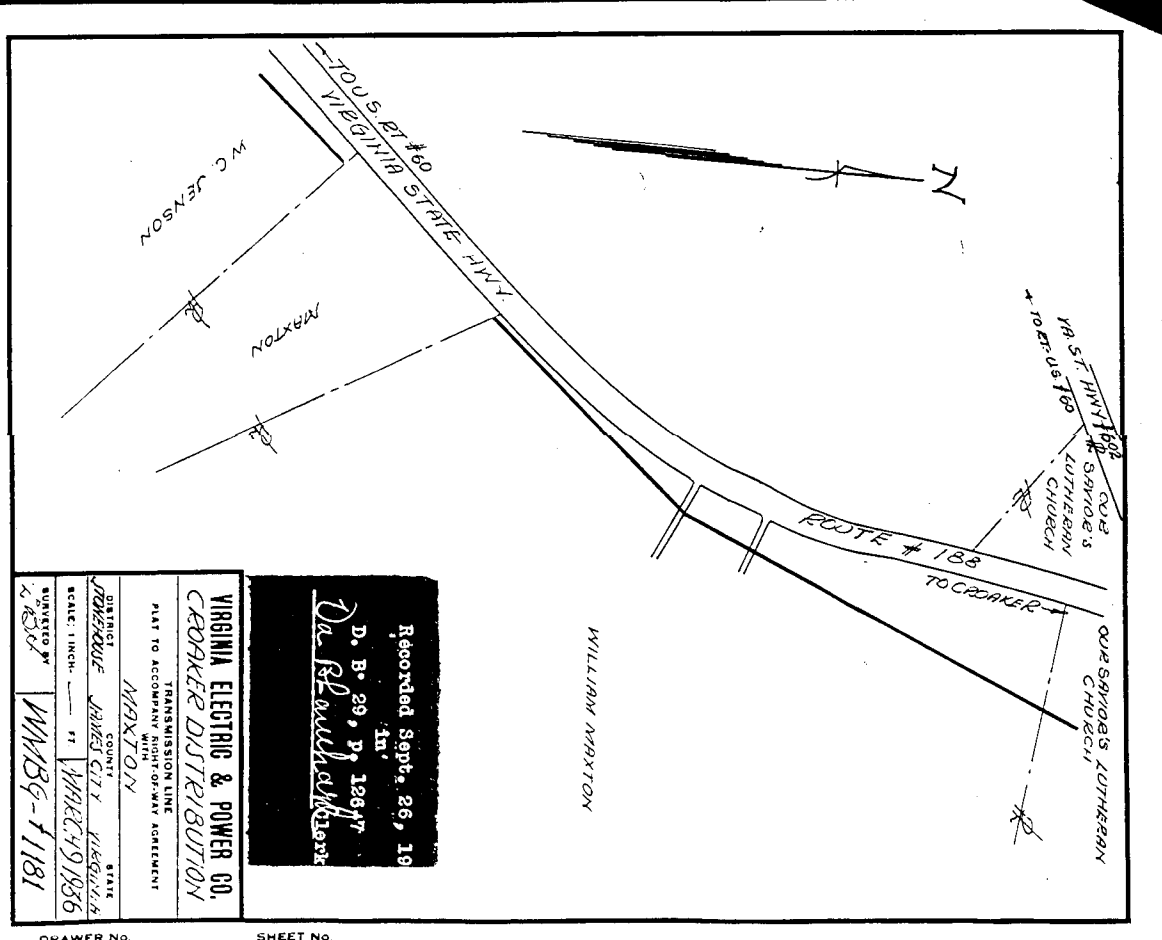


PROPOSED ADDITIONS  
TO  
CEDAR GROVE CEMETERY  
SCALE: 1/8" = 1'-0"  
JULY 1, 1936

Recorded Sept. 1, 1936,  
in  
County D. B. 29, p. 108,  
*Virginia Blauchard* Clerk

VIRGINIA ELECTRIC & POWER CO. WILLIAMSBURG DISTRIBUTION		
TRANSMISSION LINE PLAT TO ACCOMPANY RIGHT-OF-WAY AGREEMENT WITH AS SHOWN		
DISTRICT	COUNTY	STATE
JAMESTOWN	JAMES CITY	VIRGINIA
SCALE: 1 INCH =	FT.	NOV 7, 1935
SURVEYED BY EBH WMBG #1165		

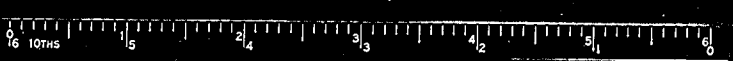
DRAWER NO. SHEET NO.



Recorded Sept. 26, 1936,  
in  
D. B. 29, p. 188-7  
*De Blauchard* Clerk

VIRGINIA ELECTRIC & POWER CO. CEDAR GROVE DISTRIBUTION		
TRANSMISSION LINE PLAT TO ACCOMPANY RIGHT-OF-WAY AGREEMENT WITH AS SHOWN		
DISTRICT	COUNTY	STATE
JAMESTOWN	JAMES CITY	VIRGINIA
SCALE: 1 INCH =	FT.	MARCH 29, 1936
SURVEYED BY WMBG #1181		

DRAWER NO. SHEET NO.



6-49