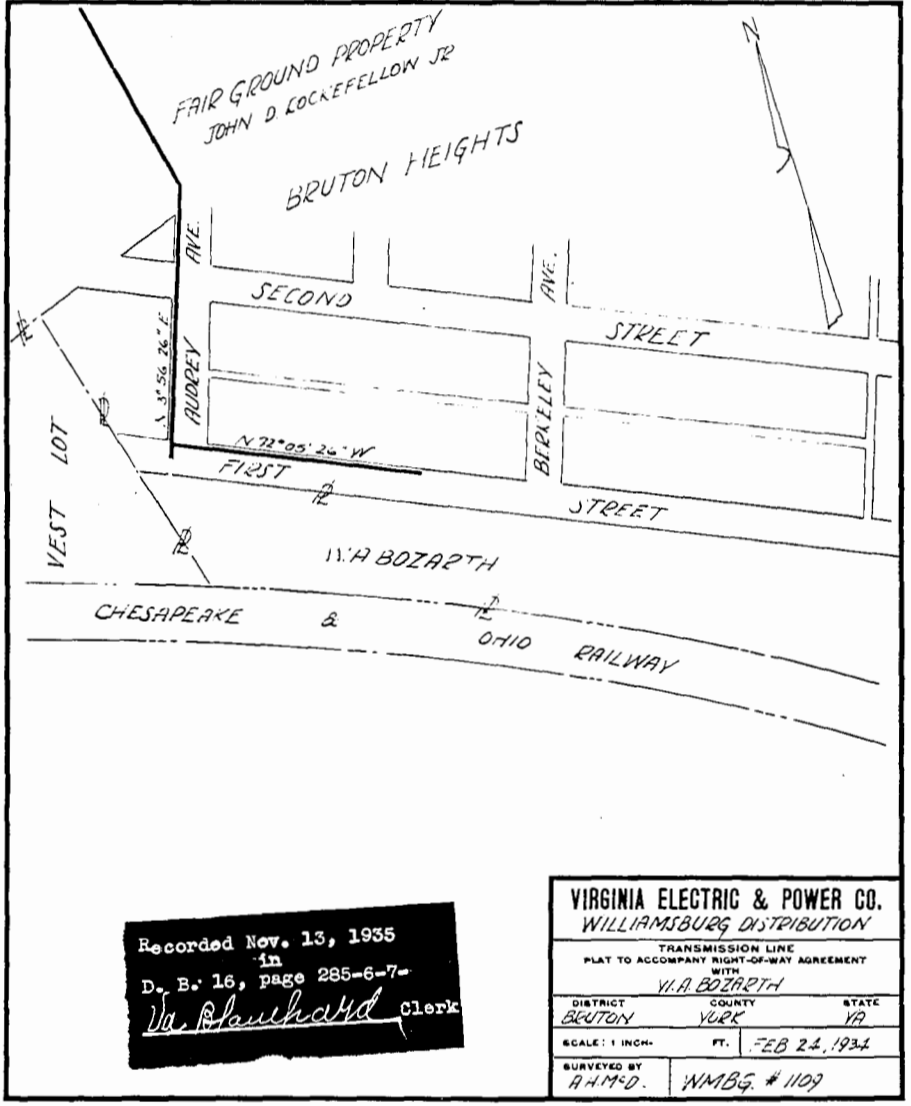


Recorded Nov. 13, 1935,
in
D. B. 16, pp 285-6-7-
Virginia Blauhaud Clerk

VIRGINIA ELECTRIC & POWER CO.
WILLIAMSBURG DISTRIBUTION
TRANSMISSION LINE
PLAT TO ACCOMPANY RIGHT-OF-WAY AGREEMENT
WITH
W.A. BOZARTH & FLORA, HIS WIFE
DISTRICT BRUTON COUNTY STATE VA
SCALE: 1 INCH = 200 FT. APR 30, 1934
SURVEYED BY DAH WMBG #1107

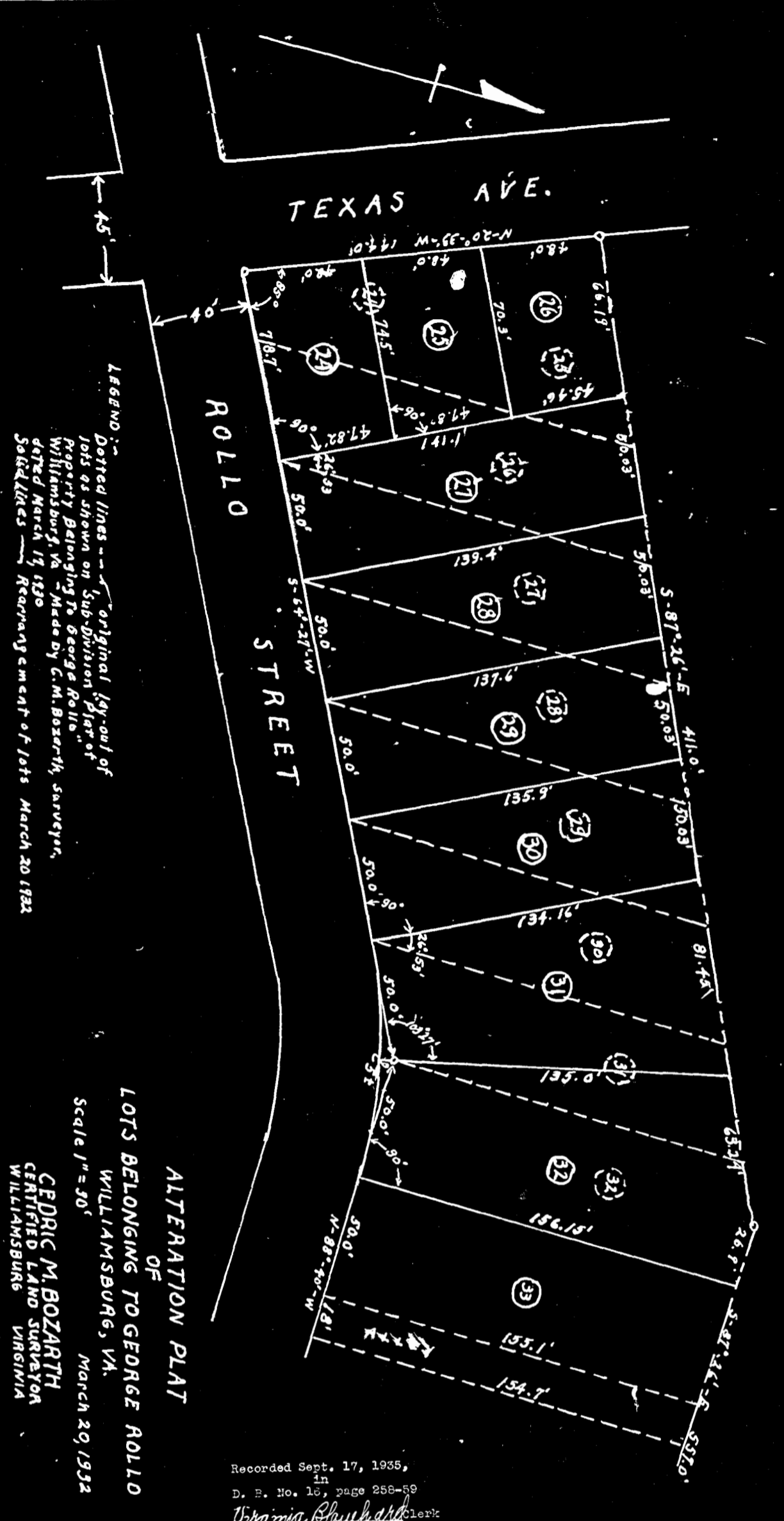
SHEET NO.
DRAWER NO.



Recorded Nov. 13, 1935
in
D. B. 16, page 285-6-7-
Virginia Blauhaud Clerk

VIRGINIA ELECTRIC & POWER CO.
WILLIAMSBURG DISTRIBUTION
TRANSMISSION LINE
PLAT TO ACCOMPANY RIGHT-OF-WAY AGREEMENT
WITH
W.A. BOZARTH
DISTRICT BRUTON COUNTY STATE VA
SCALE: 1 INCH = 200 FT. FEB 24, 1934
SURVEYED BY A.H.M. WMBG #1109

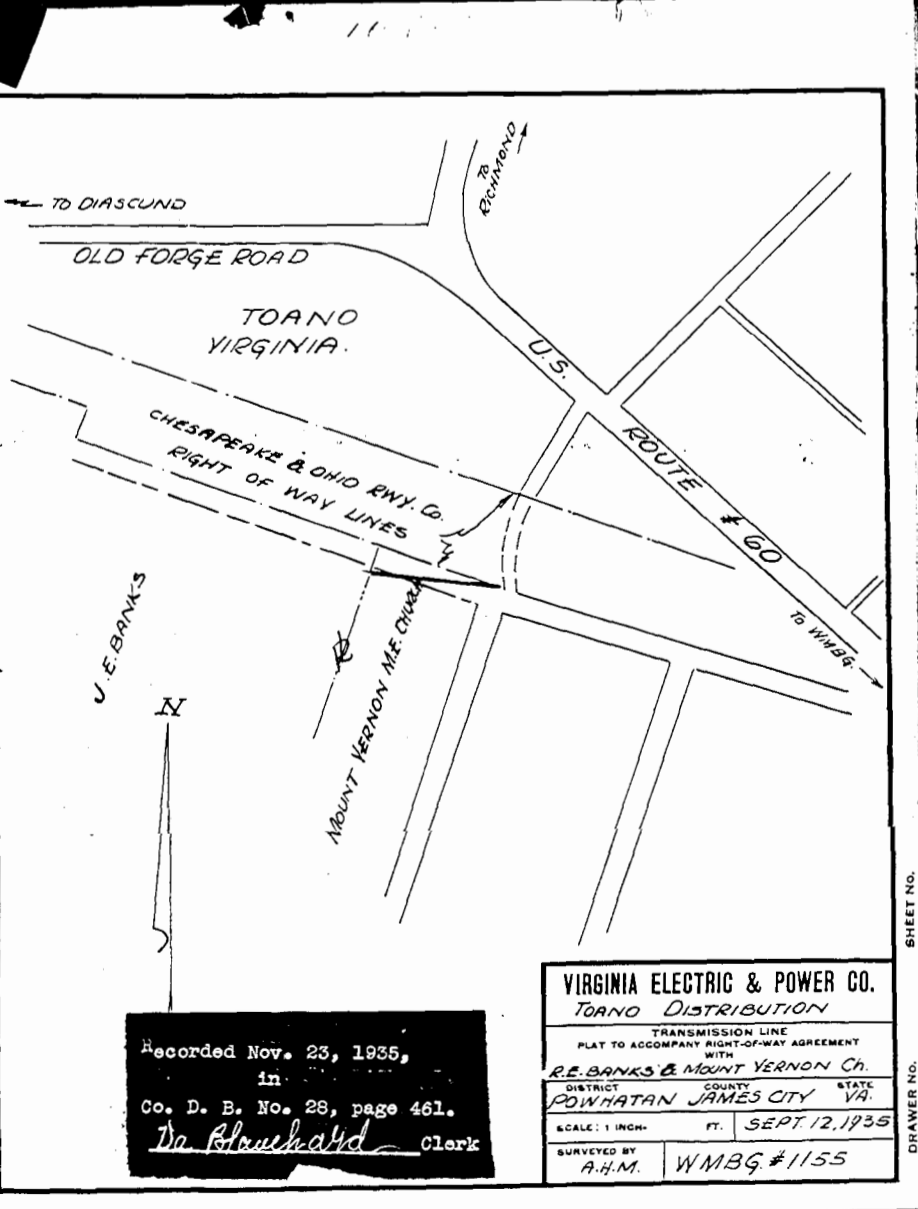
SHEET NO.
DRAWER NO.



LEGEND
Dotted lines -- original layout of lots as shown on Sub-Division Plat of Property Belonging to George Rollo Williamsburg, Va. Made by C.M. Bozarth, surveyor, dated March 19, 1930
Solid lines -- Rearrangement of lots March 20, 1932

ALTERATION PLAT
OF
LOTS BELONGING TO GEORGE ROLLO
WILLIAMSBURG, VA.
MARCH 20, 1932
Scale 1" = 30'
CEDRIC M. BOZARTH
CERTIFIED LAND SURVEYOR
WILLIAMSBURG VIRGINIA

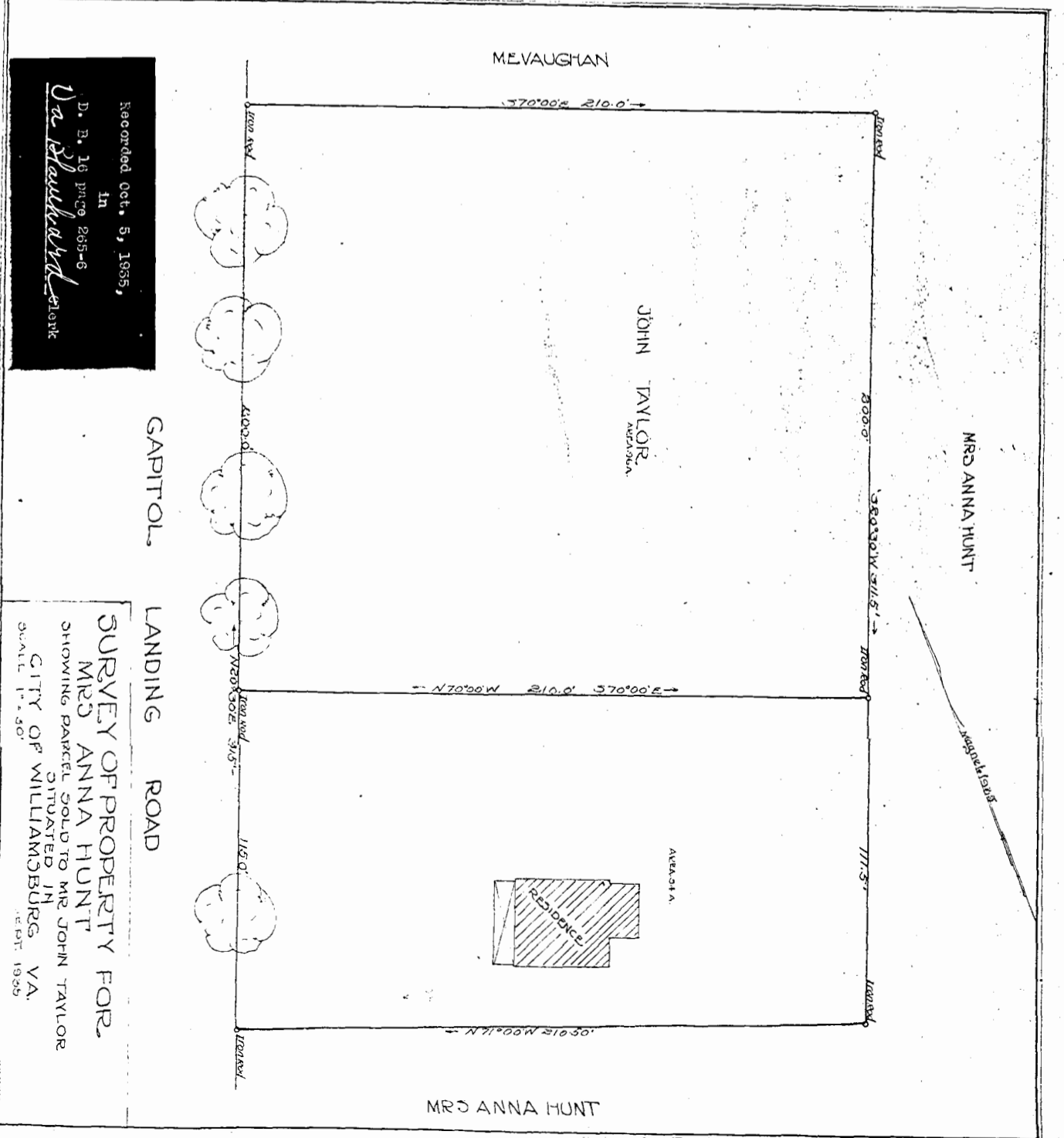
Recorded Sept. 17, 1935,
in
D. B. No. 18, page 268-89
Virginia Blauhaud Clerk



Recorded Nov. 23, 1935,
in
Co. D. B. No. 28, page 461.
Virginia Blauhaud Clerk

VIRGINIA ELECTRIC & POWER CO.
TOANO DISTRIBUTION
TRANSMISSION LINE
PLAT TO ACCOMPANY RIGHT-OF-WAY AGREEMENT
WITH
V.E. BANKS & MOUNT VERNON CHAMBERLAIN
DISTRICT POWHATAN JAMES CITY STATE VA
SCALE: 1 INCH = 100 FT. SEPT 12, 1935
SURVEYED BY A.H.M. WMBG #1155

SHEET NO.
DRAWER NO.



Recorded Oct. 5, 1935,
in
D. B. 18 pp 285-6
Virginia Blauhaud Clerk

SURVEY OF PROPERTY FOR
MRS ANNA HUNT
SHOWING PARCEL SOLD TO MR JOHN TAYLOR
CITY OF WILLIAMSBURG, VA.
APRIL 1, 1935

CAPITOL LANDING ROAD

MRS ANNA HUNT



6-38