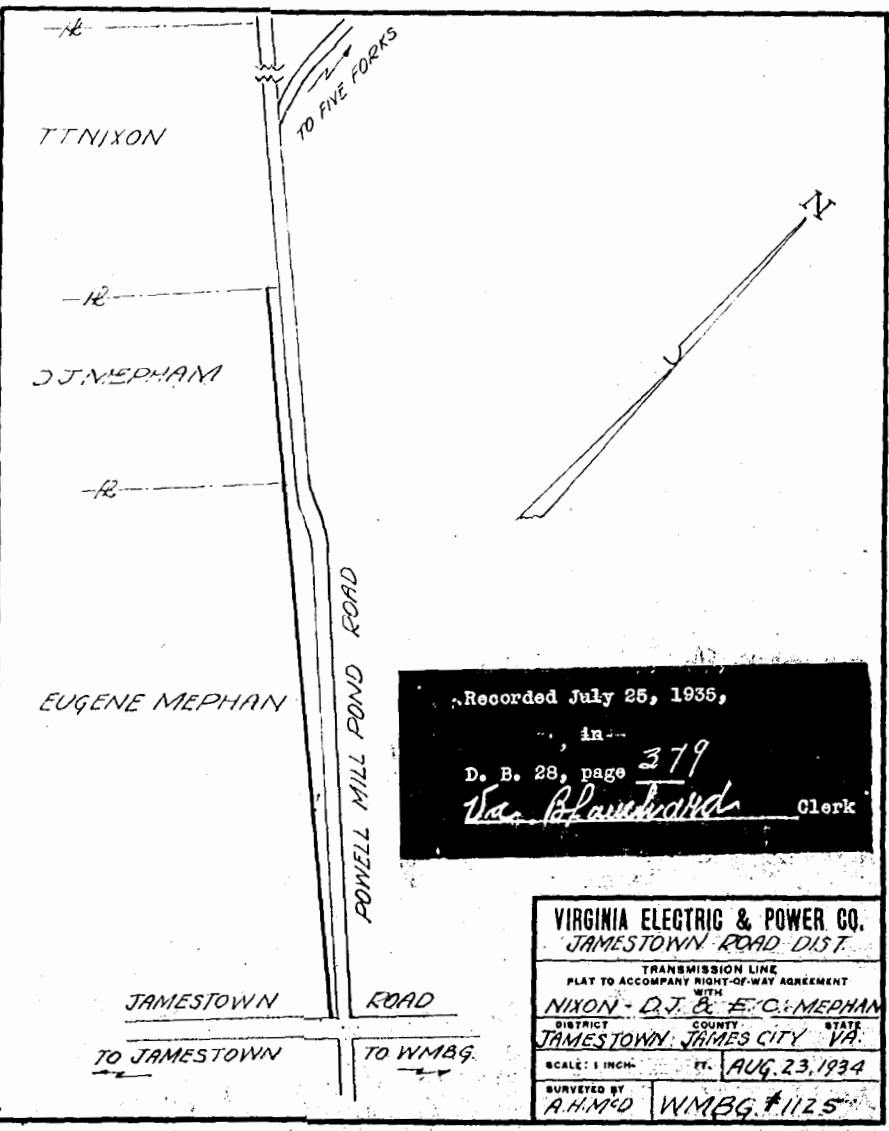


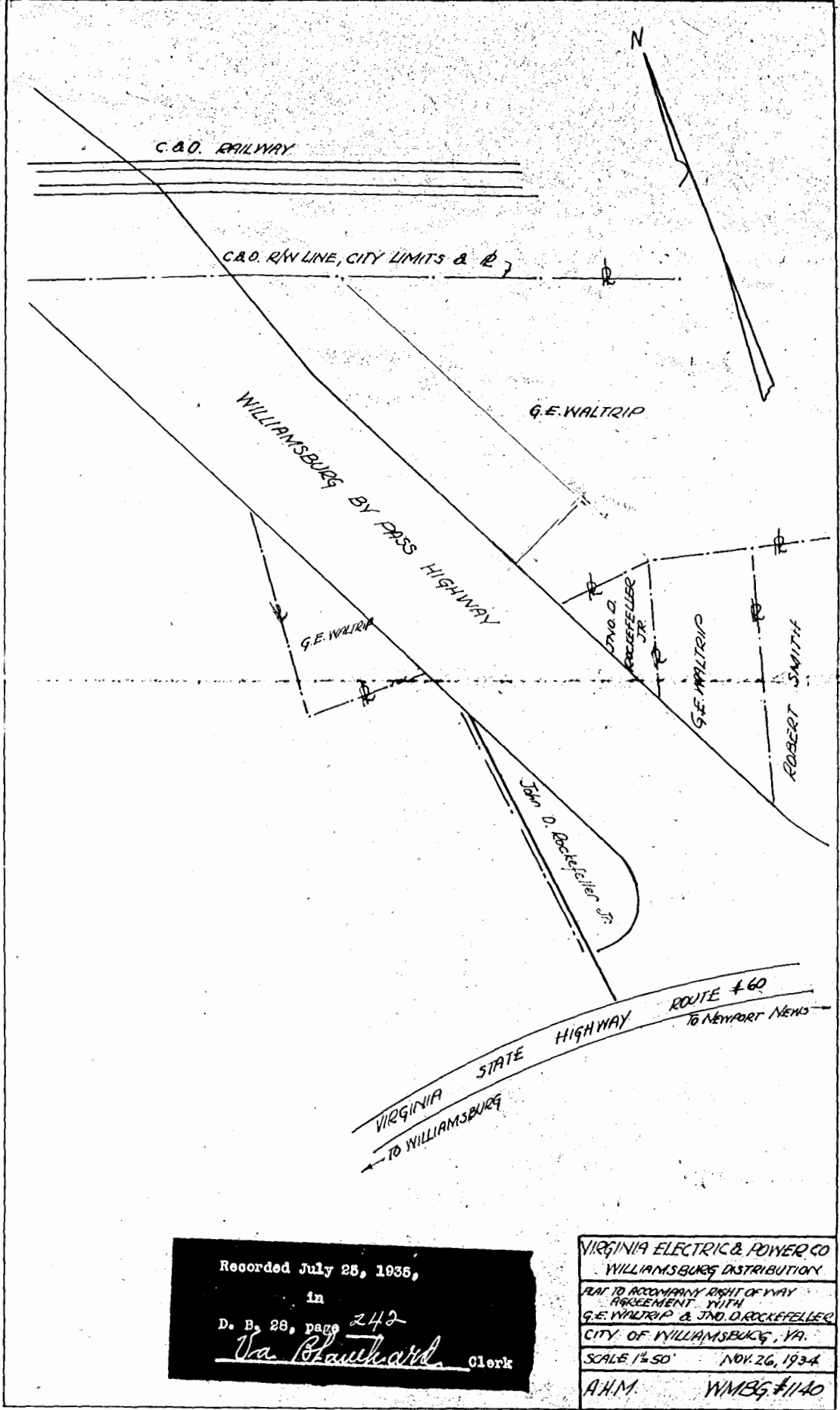
Recorded July 25, 1935,
 in
 D. B. #28, page 381
Va. Blauhaard Clerk

VIRGINIA ELECTRIC & POWER CO.
 JAMESTOWN ROAD DIST.
 TRANSMISSION LINE
 PLAT TO ACCOMPANY RIGHT-OF-WAY AGREEMENT
 WITH
 NIXON - D.J. & E.C. MEPHAM
 DISTRICT JAMES TOWN, COUNTY JAMES CITY, VA.
 SCALE: 1 INCH = 100 FT. AUG. 23, 1934
 SURVEYED BY A.H.M. WMBG #1125



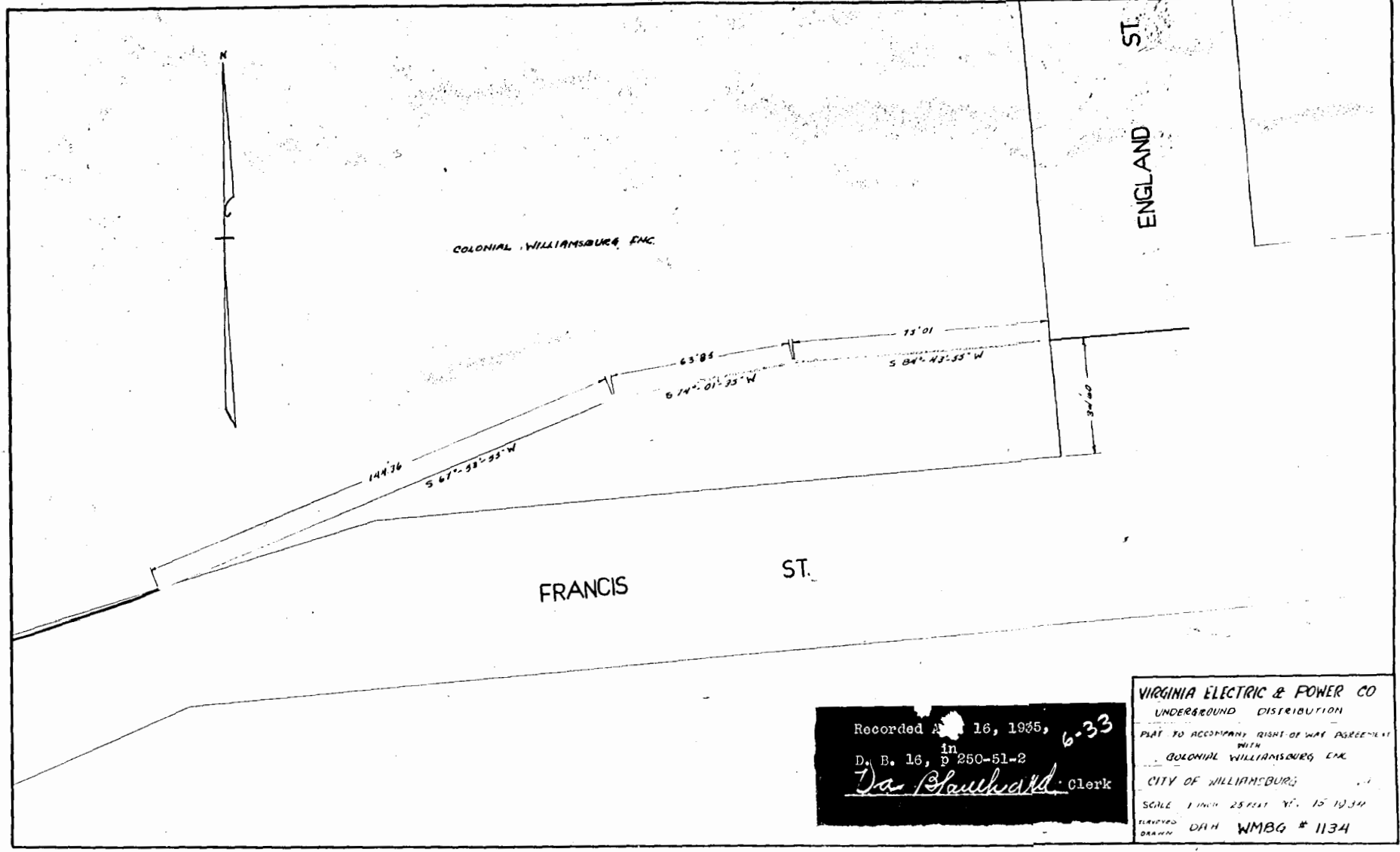
Recorded July 25, 1935,
 in
 D. B. #28, page 379
Va. Blauhaard Clerk

VIRGINIA ELECTRIC & POWER CO.
 JAMESTOWN ROAD DIST.
 TRANSMISSION LINE
 PLAT TO ACCOMPANY RIGHT-OF-WAY AGREEMENT
 WITH
 NIXON - D.J. & E.C. MEPHAM
 DISTRICT JAMES TOWN, COUNTY JAMES CITY, VA.
 SCALE: 1 INCH = 100 FT. AUG. 23, 1934
 SURVEYED BY A.H.M. WMBG #1125



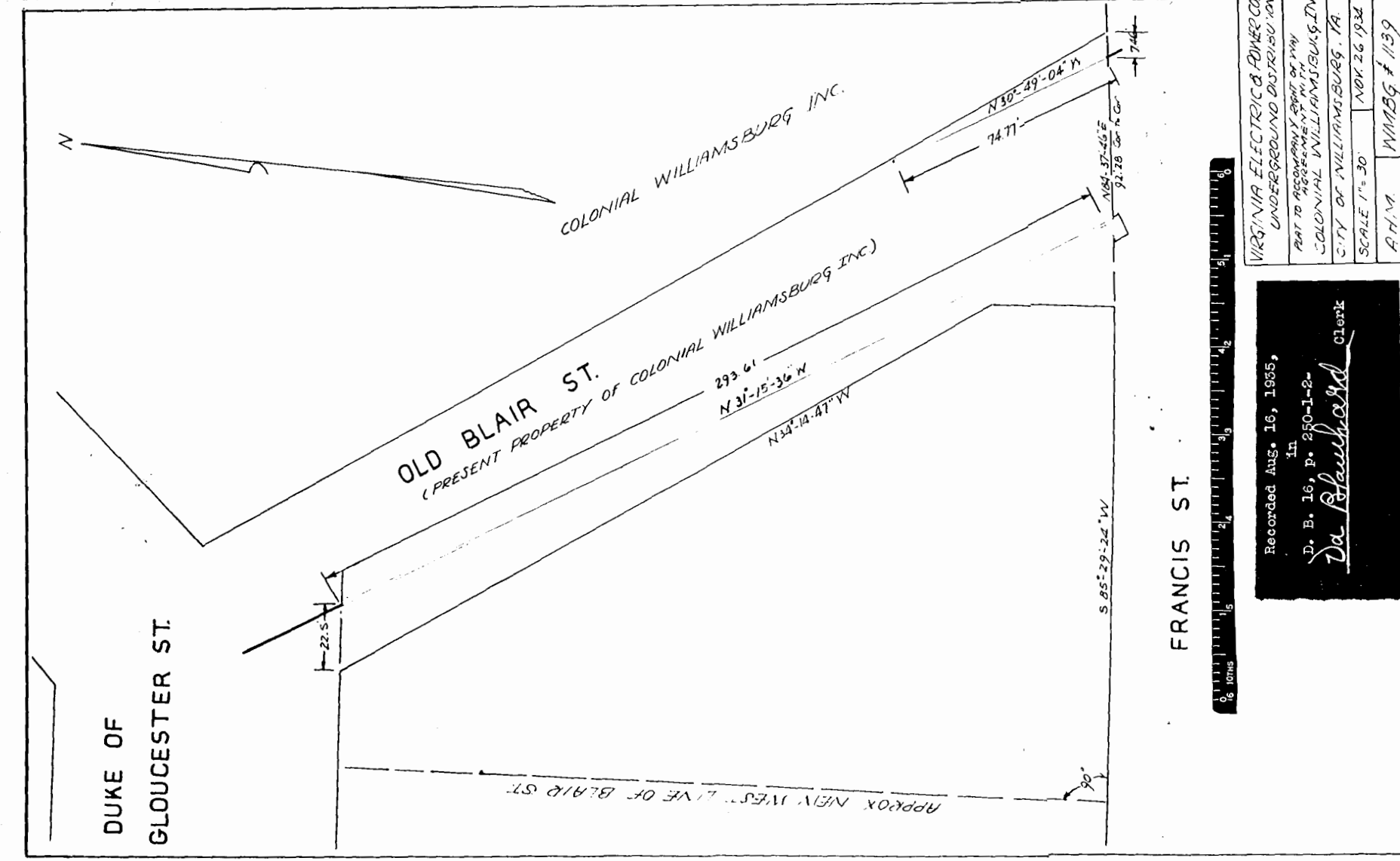
Recorded July 25, 1935,
 in
 D. B. #28, page 242
Va. Blauhaard Clerk

VIRGINIA ELECTRIC & POWER CO.
 WILLIAMSBURG DISTRIBUTION
 PLAT TO ACCOMPANY RIGHT OF WAY
 AGREEMENT WITH
 G.E. WALTRIP & J.M.D. ROCKEFELLER
 CITY OF WILLIAMSBURG, VA.
 SCALE 1/4" = 50' NOV. 26, 1934
 A.H.M. WMBG #1140



Recorded Aug. 16, 1935,
 in
 D. B. #16, p. 250-51-2
Va. Blauhaard Clerk

VIRGINIA ELECTRIC & POWER CO.
 UNDERGROUND DISTRIBUTION
 PLAT TO ACCOMPANY RIGHT OF WAY AGREEMENT
 WITH
 COLONIAL WILLIAMSBURG INC.
 CITY OF WILLIAMSBURG,
 SCALE 1 INCH = 25 FEET N. 15' 10.34"
 DRAWN D.H.M. WMBG #1134



VIRGINIA ELECTRIC & POWER CO.
 UNDERGROUND DISTRIBUTION
 PLAT TO ACCOMPANY RIGHT OF WAY
 AGREEMENT WITH
 COLONIAL WILLIAMSBURG INC.
 CITY OF WILLIAMSBURG, VA.
 SCALE 1" = 30' NOV. 26, 1934
 A.H.M. WMBG #1139

Recorded Aug. 16, 1935,
 in
 D. B. #16, p. 250-1-2
Va. Blauhaard Clerk