

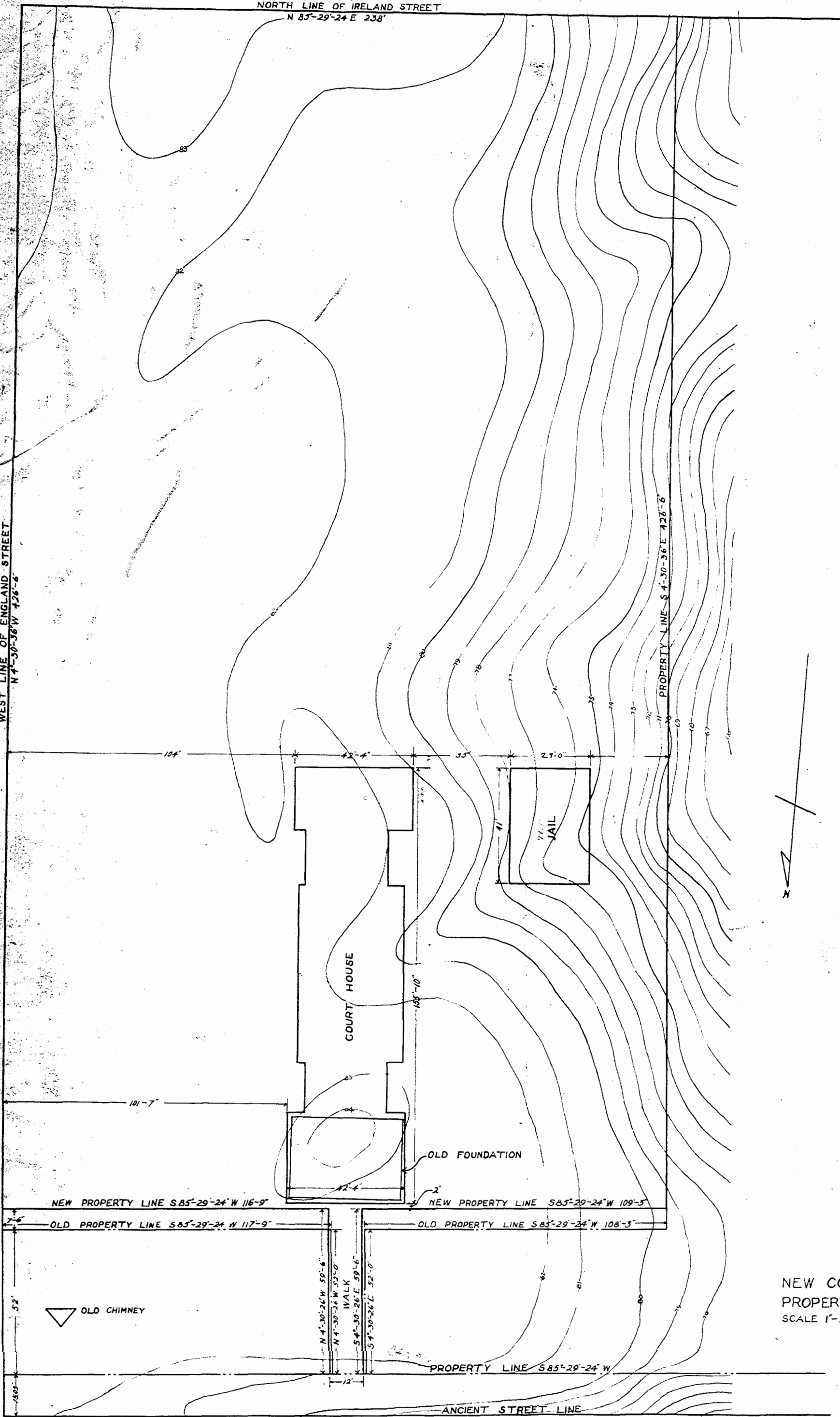
IRELAND STREET

NORTH LINE OF IRELAND STREET
N 85°-29'-24" E 238'

ENGLAND STREET

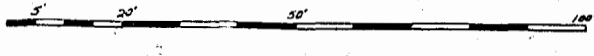
WEST LINE OF ENGLAND STREET
N 74°-50'-36" W 426'-6"

PROPERTY LINE S 4°-30'-36" E 426'-6"



5-38

LOCATION PLAN
OF
NEW COURT HOUSE SHOWING REVISION OF
PROPERTY LINES AT NORTH END OF LOT
SCALE 1"=20'
NOV. 7, 1930.
PLAT BY
V. D. MCMANUS



FRANCIS STREET

*Approved Jan 26/31
G. Coleman
V. D. McManus*

Recorded Jan. 19, 1932
in
D. B. No. 15, page
Virginia Bluechard Clerk

WILLIAMSBURG RESTORATION FOR THE WILLIAMSBURG HOLDING CO.			
REVISIONS	PERRY SHAW & HEPBURN, ARCHITECTS 141 MILK ST., BOSTON & WILLIAMSBURG, VA.	BLOCK 4	BLDG.
	JAMES CITY Co. Court House & JAIL	AUTHN.	NUMBER
	PLOT PLAN		
SCALE	DATE	MADE BY	Checked BY
1"=20'	1/2/31	V.D.M.	W.M.M.
			1-A

