

Virginia-Flourish  
Survey

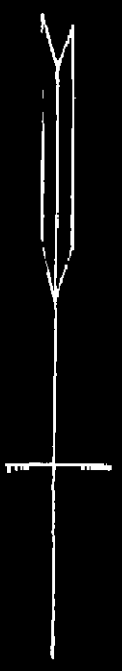
Recorded July 16, 1931  
p. 26, p. 176-7  
176-7

James City County, Virginia  
District  
E. A. Topham  
sold to  
D. T. Topham

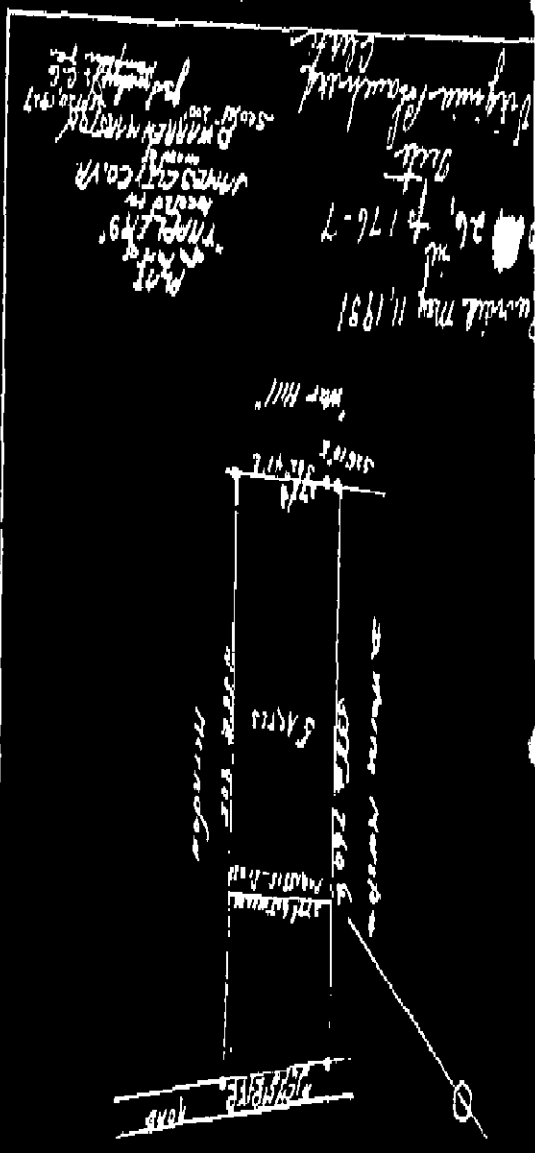
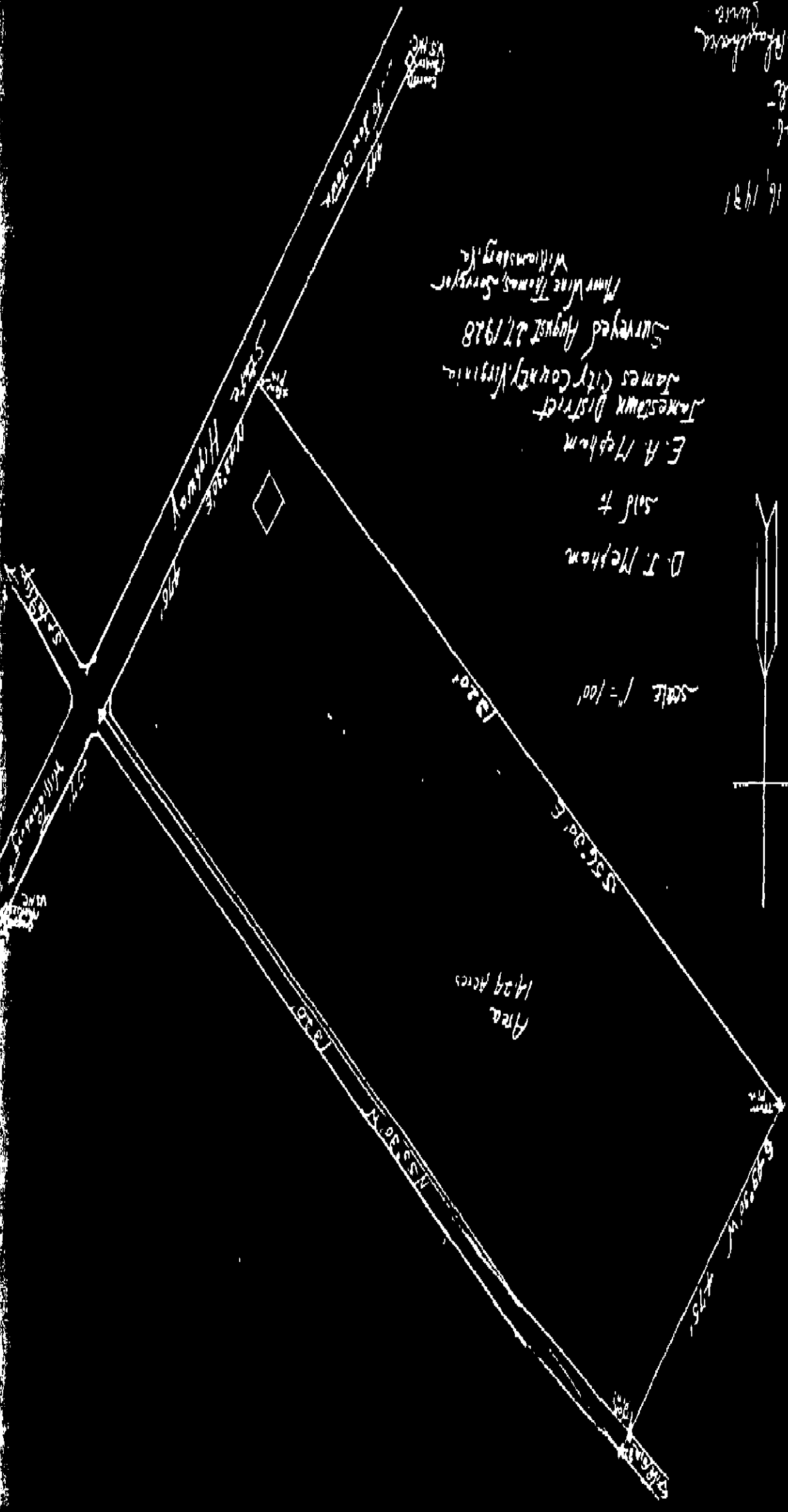
Surveyed August 27, 1928

Flour Mill Thomas, Surveyor  
Williamsburg, Va.

SCALE 1" = 100'



Area  
14.29 Acres



Recorded May 11, 1931  
p. 26, p. 176-7  
176-7  
James City County  
District  
E. A. Topham  
sold to  
D. T. Topham

Area  
14.29 Acres