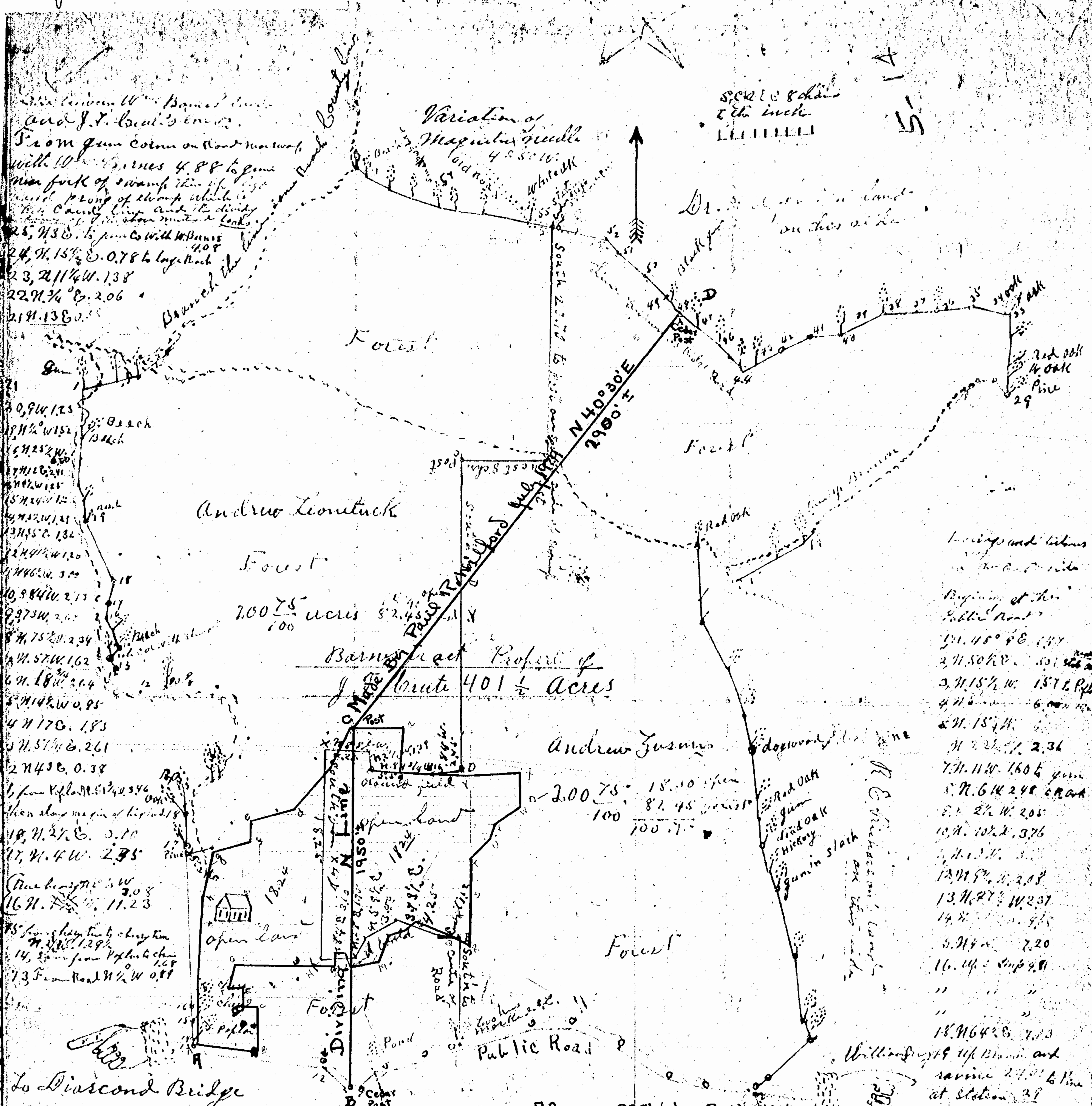


Recorded sept. 16, 1930,

in

D. B. #26, page 21-22.

Virginia Planchard, Clerk



From gum corner on road northeast  
with 10° bearing 4.88 to gum  
corner fork of swamp then up  
road along of swamp which is  
the County line and the divide  
between the two tracts  
25, N 30° E. 6.5 to gum corner with 40°  
24, N 15° E. 0.78 to log track  
23, N 11 1/4° W. 1.38  
22, N 3/4° E. 2.06  
21, N 13 E. 0.7

0, 9° W. 1.25  
1, N 1/2° W. 1.52  
2, N 25° W. 1.50  
3, N 12° E. 2.41  
4, N 1/2° W. 1.55  
5, N 24° W. 1.2  
6, N 32° W. 1.41  
7, N 55° E. 1.32  
8, N 41° W. 1.20  
9, N 40° W. 3.00  
10, S 84° W. 2.15  
11, S 73° W. 2.05  
12, N 75° W. 2.34  
13, N 57° W. 1.62  
14, N 18° W. 2.64  
15, N 14° W. 0.95  
16, N 17° E. 1.83  
17, N 57° E. 2.61  
18, N 43° E. 0.38  
19, from Poplar N. 51 1/2° W. 3.96  
then along margin of high road  
20, N 21° E. 5.70  
21, N 14° W. 2.35  
True bearing N 14° W. 3.08  
16, N 14° W. 11.23  
25, from gum corner to cherry tree  
N 28° W. 1.29  
14, from gum corner to Poplar  
N 16° E. 1.65  
7, 3, from Road N 1/4° W. 0.89

11, 45° E. 1.87  
2, 11, 50° E. 5.01  
3, 11, 15° W. 1.57  
4, 11, 15° W. 6.00  
5, 11, 15° W. 6.00  
6, 11, 22° W. 2.36  
7, 11, 11° W. 1.60  
8, 11, 6° W. 2.48  
9, 11, 2° W. 2.05  
10, 11, 10° E. 3.76  
11, 11, 15° W. 3.00  
12, 11, 9° W. 2.08  
13, 11, 27° W. 2.37  
14, 11, 10° W. 4.15  
15, 11, 14° W. 7.20  
16, 11, 14° W. 6.91  
17, 11, 14° W. 7.13  
18, 11, 64° E. 7.13  
19, 11, 14° W. 2.41  
20, 11, 4° E. 1.38  
21, 11, 5° E. 1.12  
22, 11, 5° E. 2.69  
23, 11, 14° E. 1.12  
24, 11, 14° E. 1.12  
25, 11, 14° E. 1.12  
26, 11, 14° E. 1.12  
27, 11, 14° E. 1.12  
28, 11, 14° E. 1.12  
29, 11, 14° E. 1.12  
30, 11, 14° E. 1.12  
31, 11, 14° E. 1.12  
32, 11, 14° E. 1.12  
33, 11, 14° E. 1.12  
34, 11, 14° E. 1.12  
35, 11, 14° E. 1.12  
36, 11, 14° E. 1.12  
37, 11, 14° E. 1.12  
38, 11, 14° E. 1.12  
39, 11, 14° E. 1.12  
40, 11, 14° E. 1.12  
41, 11, 14° E. 1.12  
42, 11, 14° E. 1.12  
43, 11, 14° E. 1.12  
44, 11, 14° E. 1.12  
45, 11, 14° E. 1.12  
46, 11, 14° E. 1.12  
47, 11, 14° E. 1.12  
48, 11, 14° E. 1.12  
49, 11, 14° E. 1.12  
50, 11, 14° E. 1.12  
51, 11, 14° E. 1.12  
52, 11, 14° E. 1.12  
53, 11, 14° E. 1.12  
54, 11, 14° E. 1.12  
55, 11, 14° E. 1.12  
56, 11, 14° E. 1.12  
57, 11, 14° E. 1.12  
58, 11, 14° E. 1.12  
59, 11, 14° E. 1.12  
60, 11, 14° E. 1.12  
61, 11, 14° E. 1.12  
62, 11, 14° E. 1.12  
63, 11, 14° E. 1.12  
64, 11, 14° E. 1.12  
65, 11, 14° E. 1.12  
66, 11, 14° E. 1.12  
67, 11, 14° E. 1.12  
68, 11, 14° E. 1.12  
69, 11, 14° E. 1.12  
70, 11, 14° E. 1.12  
71, 11, 14° E. 1.12  
72, 11, 14° E. 1.12  
73, 11, 14° E. 1.12  
74, 11, 14° E. 1.12  
75, 11, 14° E. 1.12  
76, 11, 14° E. 1.12  
77, 11, 14° E. 1.12  
78, 11, 14° E. 1.12  
79, 11, 14° E. 1.12  
80, 11, 14° E. 1.12  
81, 11, 14° E. 1.12  
82, 11, 14° E. 1.12  
83, 11, 14° E. 1.12  
84, 11, 14° E. 1.12  
85, 11, 14° E. 1.12  
86, 11, 14° E. 1.12  
87, 11, 14° E. 1.12  
88, 11, 14° E. 1.12  
89, 11, 14° E. 1.12  
90, 11, 14° E. 1.12  
91, 11, 14° E. 1.12  
92, 11, 14° E. 1.12  
93, 11, 14° E. 1.12  
94, 11, 14° E. 1.12  
95, 11, 14° E. 1.12  
96, 11, 14° E. 1.12  
97, 11, 14° E. 1.12  
98, 11, 14° E. 1.12  
99, 11, 14° E. 1.12  
100, 11, 14° E. 1.12

The property of J. F. Crain in  
James City County, Va.  
Known as the Barnes land  
Situating in Fork Station District  
Carved in March 1917  
and found to contain 401 1/2 acres

Nov. 1922 I divided the above described property  
into two parts of 200.75 acres each

Witness my hand and  
the seal of the County  
Sept. 16, 1930

Old Chandler Surveyor

AB- 885' (along Road)  
BC- N - 1950 ±  
CD- N 40° 30' E - 2900 ±

7/5/29 Crawford

401 1/2 acres

Old Chandler Surveyor

Nov. 1922 I divided the above described property

into two parts of 200.75 acres each

Witness my hand and the seal of the County

Sept. 16, 1930