

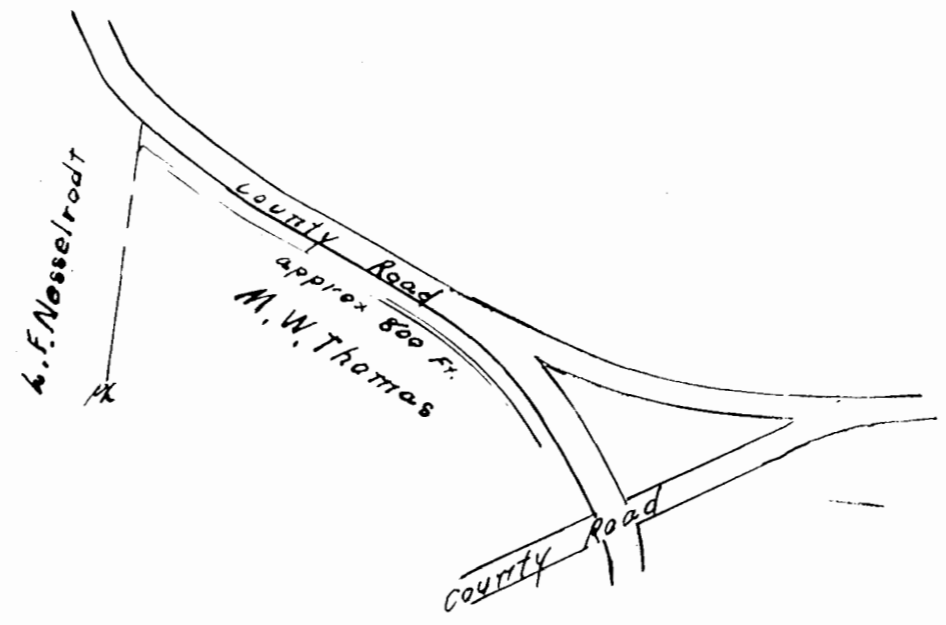
approx 2000 Ft
D.C. Rerrick

E.A. Gilley

Recorded July 21, 1930,
in
D. B. #25, p. 562
The Blanchard, Clerk

VIRGINIA ELECTRIC & POWER CO.		
Proposed Line		
TRANSMISSION LINE		
PLAT TO ACCOMPANY RIGHT-OF-WAY AGREEMENT		
WITH		
D.C. Rerrick		
DISTRICT	COUNTY	STATE
James City	James City	Va
SCALE: 1 INCH =	FT.	4-23-24
SURVEYED BY		
W-J-No. 9		

DRAWER NO. SHEET NO.

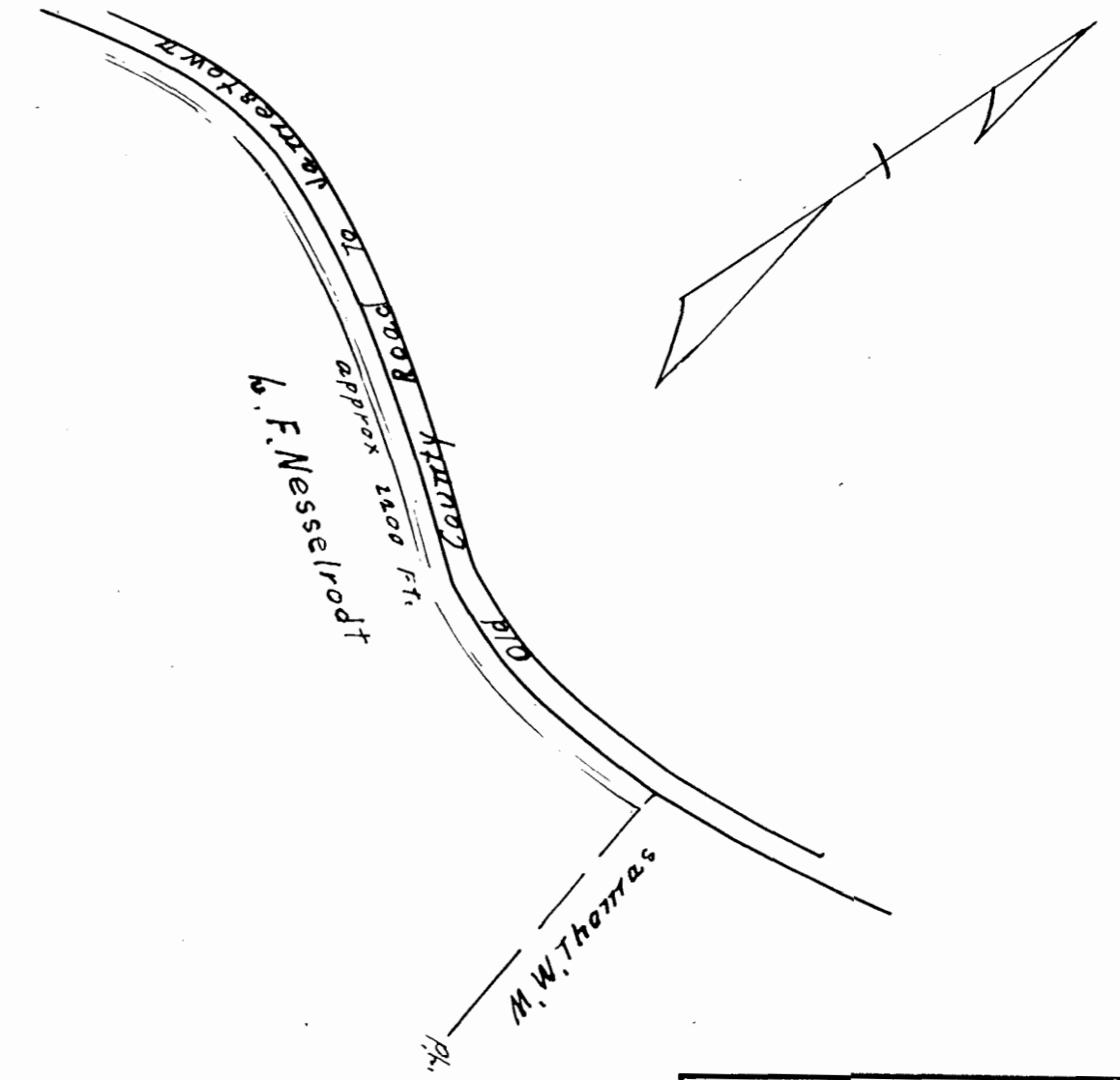


A.F. Nesselrodt

Recorded July 21, 1930,
in
D. B. #25, page 564
The Blanchard, Clerk

VIRGINIA ELECTRIC & POWER CO.		
Proposed Line		
TRANSMISSION LINE		
PLAT TO ACCOMPANY RIGHT-OF-WAY AGREEMENT		
WITH		
M.W. Thomas		
DISTRICT	COUNTY	STATE
James City	James City	Va
SCALE: 1 INCH =	FT.	4-24-30
SURVEYED BY		
W-J-No. 19		

DRAWER NO. SHEET NO.



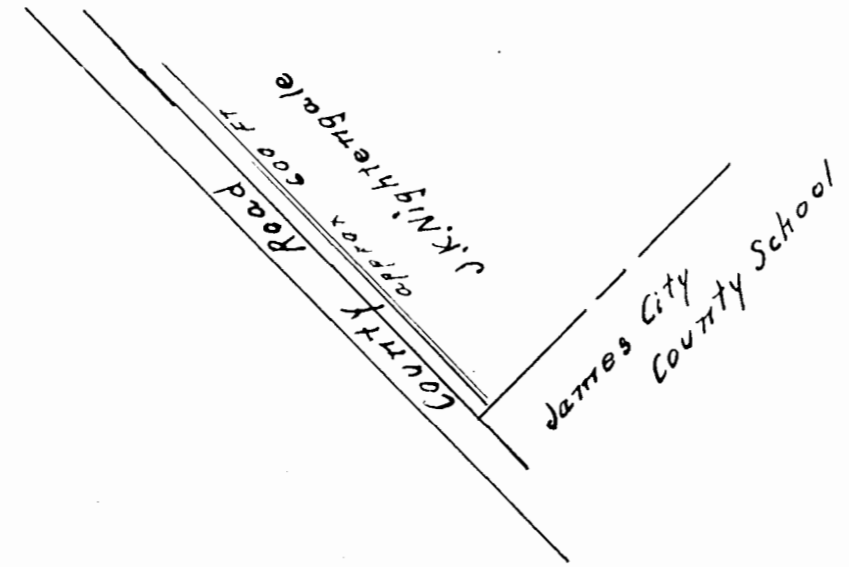
A.F. Nesselrodt

Recorded July 21, 1930,
in
D. B. #25, p. 560
The Blanchard, Clerk

VIRGINIA ELECTRIC & POWER CO.		
Proposed Line		
TRANSMISSION LINE		
PLAT TO ACCOMPANY RIGHT-OF-WAY AGREEMENT		
WITH		
A.F. Nesselrodt		
DISTRICT	COUNTY	STATE
James City	James City	Va
SCALE: 1 INCH =	FT.	4-24-30
SURVEYED BY		
W-J-No. 20		

DRAWER NO. SHEET NO.

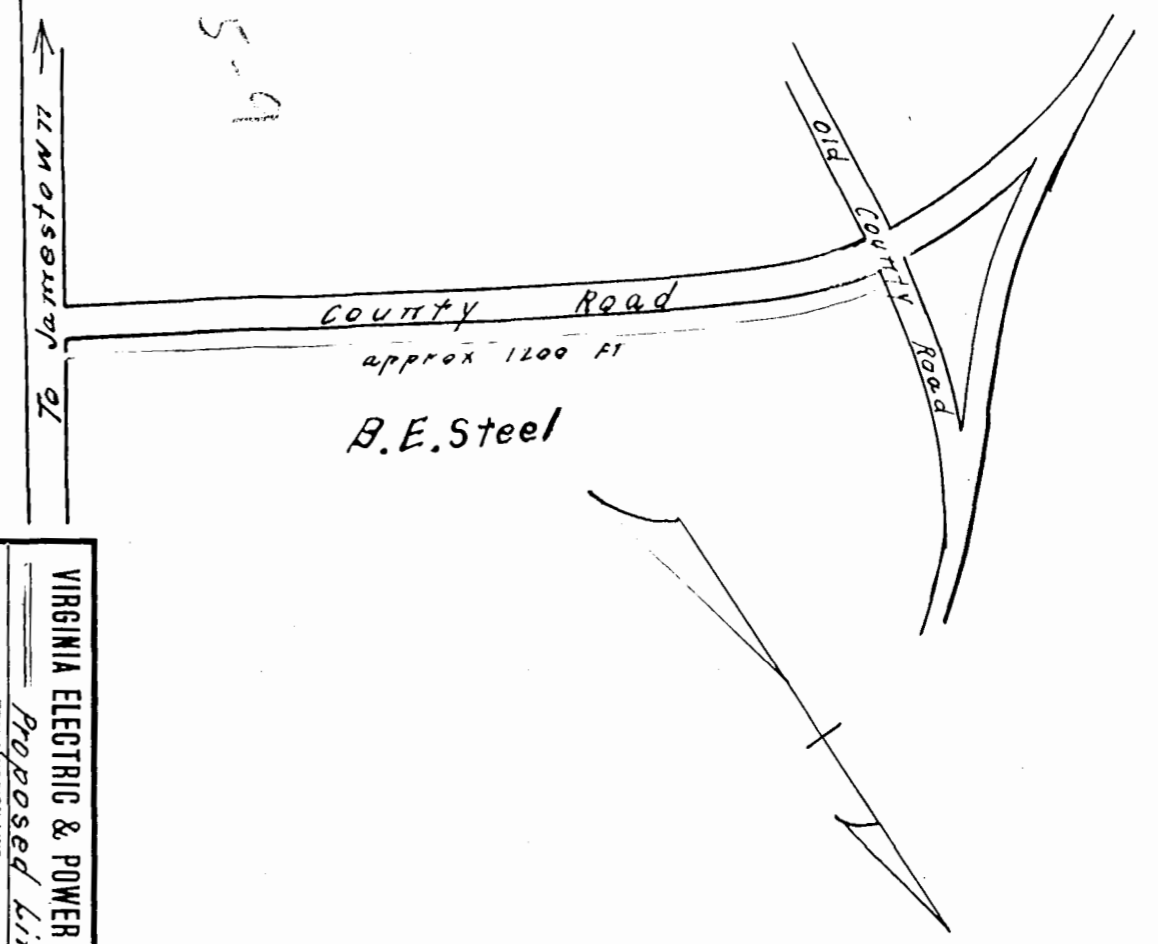
Recorded July 21, 1930,
in
D. B. #25, p. 567
The Blanchard, Clerk



VIRGINIA ELECTRIC & POWER CO.		
Proposed Line		
TRANSMISSION LINE		
PLAT TO ACCOMPANY RIGHT-OF-WAY AGREEMENT		
WITH		
J.K. Nightergale		
DISTRICT	COUNTY	STATE
James City	James City	Va
SCALE: 1 INCH =	FT.	4-23-30
SURVEYED BY		
W-J-No. 16		

DRAWER NO. SHEET NO.

Recorded July 21, 1930,
in
D. B. #25, page 562
The Blanchard, Clerk



VIRGINIA ELECTRIC & POWER CO.		
Proposed Line		
TRANSMISSION LINE		
PLAT TO ACCOMPANY RIGHT-OF-WAY AGREEMENT		
WITH		
B.E. Steel		
DISTRICT	COUNTY	STATE
James City	James City	Va
SCALE: 1 INCH =	FT.	4-25-30
SURVEYED BY		
W-J-No. 17		

DRAWER NO. SHEET NO.

