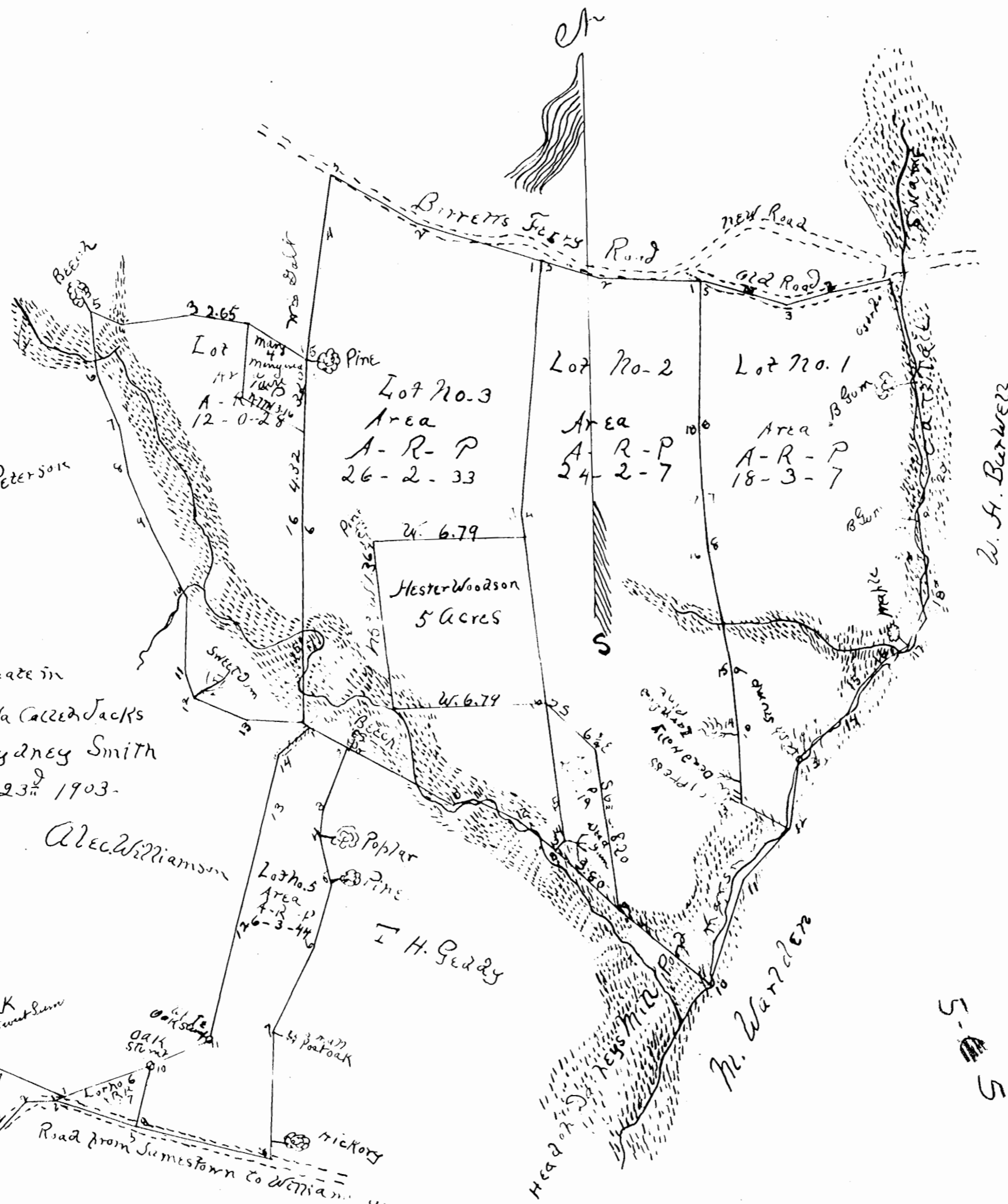
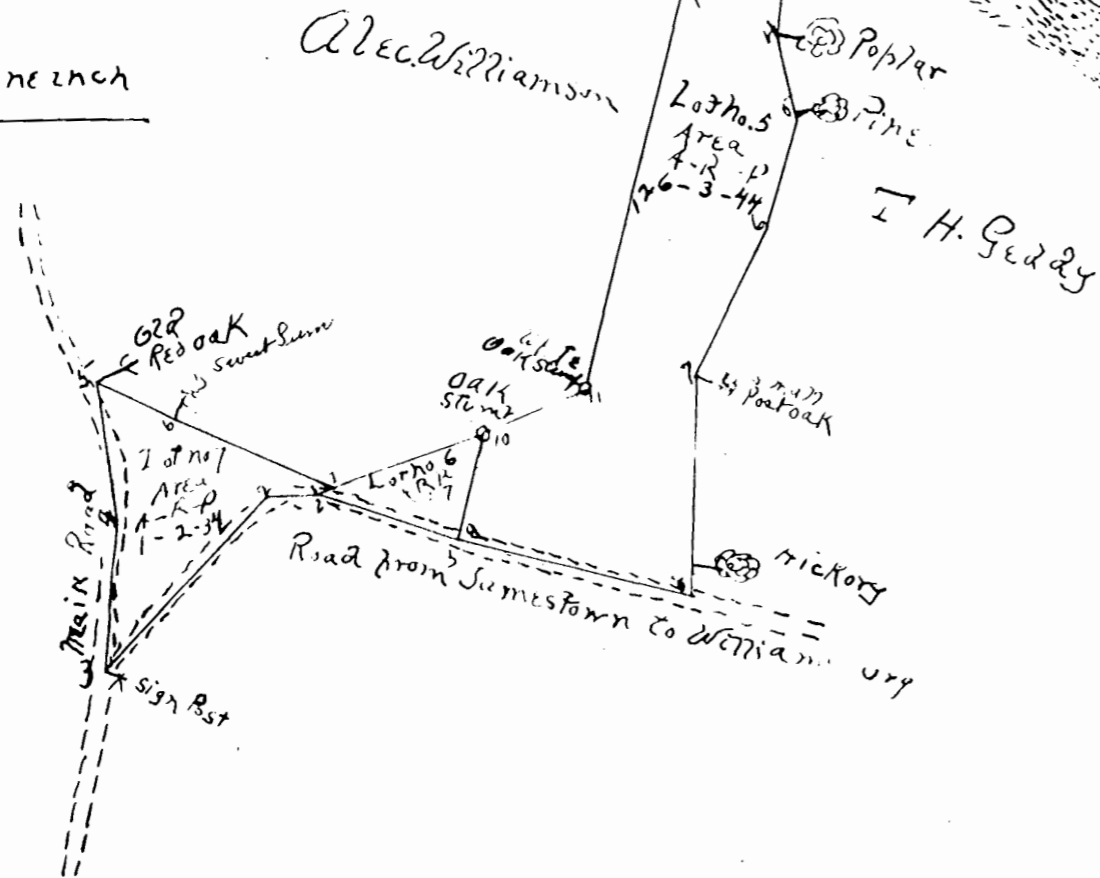


Field Notes (Continued)

Sta	Bear.	Dist.	REMARKS
Lot No. 5-			
1	S 54 E	2.62	This Sta. is in
2	S 22 3/4 W	2.93	Lines Resine St
3	S 12 W	1.14	from Sta. 14 + 8
4	S 13 E	2.14	Lots Nos 3 + 4
5	S 18 W	2.93	
6	S 27 W	4.19	
7	S 37 1/2 W	5.73	
8	N 77 1/2 W	6.22 3/4	
9	N 15 E	2.79	
10	N 68 E	2.80 1/2	
11	N 15 3/4 E	5.03	
12	N 19 E	5.64	
13	N 12 1/2 E	2.16	
14	N 41 1/2 E	2.16 1/2	
Lot No. 6			
1	S 73 W	4.63	This is a little
2	S 70 E	3.90 1/2	triangle on
3	N 15 1/2 E	2.79	the Jamestown
Lot No. 7-			
1	S 84 1/2 W	1.42 1/2	This tract is
2	S 44 1/2 W	5.92	the triangle
3	N 6 1/2 E	4.12	at the junction
4	N 9 W	3.37	of the main road
5	S 68 1/2 E	2.15	and James town
6	S 64 E	4.56	Road
7	S 73 W	0.41	

A Part of a tract of land situate in
 Jamestown District, James City Co. Va called Jacks
 Surveyed for Robert Jones by Sydney Smith
 Surveyor, Sept. 15th - 16th and 23rd 1903.

Scale
 Four chains to one inch



Sta	Bear.	Dist.	REMARKS
Lot No. 1			
1	S 60 1/2 W	2.99 1/2	This Sta. is in
2	S 76 3/4 W	1.77	Line of Old Road con
3	N 72 W	1.69	with Burretts
4	N 73 1/2 W	2.71 1/2	
5	S 1 1/2 E	6.58	
6	S 1 1/2 E	3.55	
7	S 3 1/2 E	2.88	
8	S 9 3/4 E	2.58	
9	S 6 3/4 E	2.75	
10	S 1 1/2 E	3.27	
11	S 60 1/2 E	2.40	
12	N 10 E	3.17	
13	N 45 E	2.75	
14	N 22 1/2 E	1.56	
15	N 16 1/2 E	1.60	
16	N 62 1/2 E	1.44	
17	N 20 1/2 E	2.47 1/2	
18	N 15 W	3.80 1/2	
19	N 14 E	1.89	
20	N 7 W	3.90	
21	N 13 1/4 W	4.81	
Lot No. 2			
1	N 86 1/2 W	4.60 1/2	This Sta. is in old
2	N 72 W	2.69	Road near the
3	S 1 1/2 E	11.43 1/2	with New Road
4	S 6 E	8.42	
5	S 7 E	5.36	
6	S	1.50	
7	S 27 1/2 W	0.56	
8	S 46 3/4 E	3.77	
9	S 50 1/2 E	5.27	
10	N 9 E	4.45	
11	N 1 1/2 E	3.00	
12	N 60 1/2 W	2.40	
13	N 1 1/2 W	3.29	
14	N 63 1/2 W	2.75	
15	N 9 3/4 W	5.58	
16	N 3 1/4 W	2.38	
17	N 14 W	3.58	
18	N 1 1/2 E	6.58	
Lot No. 3			
1	N 77 W	5.87	This Sta. is in
2	N 51 1/2 W	4.95	old near four
3	S 9 W	2.74 1/2	
4	S 7 1/2 W	5.22 1/2	
5	S 31 1/2 W	7.52	
6	S 1 1/2 W	5.47	
7	S	3.24	
8	S 54 1/2 E	2.40	
9	S 61 1/2 E	5.31	
10	N 76 E	0.95	
11	S 65 1/2 E	1.96	
12	S 50 1/2 E	2.83	
13	N 27 1/2 E	0.56	
14	N	1.50	
15	N 7 W	5.36	
16	N	8.42	
17	N 6 1/2 E	11.43 1/2	
Lot No. 4			
1	N 57 1/2 W	2.94	This Sta. is the
2	N 78 1/2 W	2.80	West of Lot 12
3	S 8 1/2 E	3.14	
4	N 63 W	1.48	
5	S 1 1/2 E		
6	S 11 3/4 E		
7	S 10 E		
8	S 21		

Recorded Aug. 9, 1930.
 Virginia R. Sheppard, Clerk