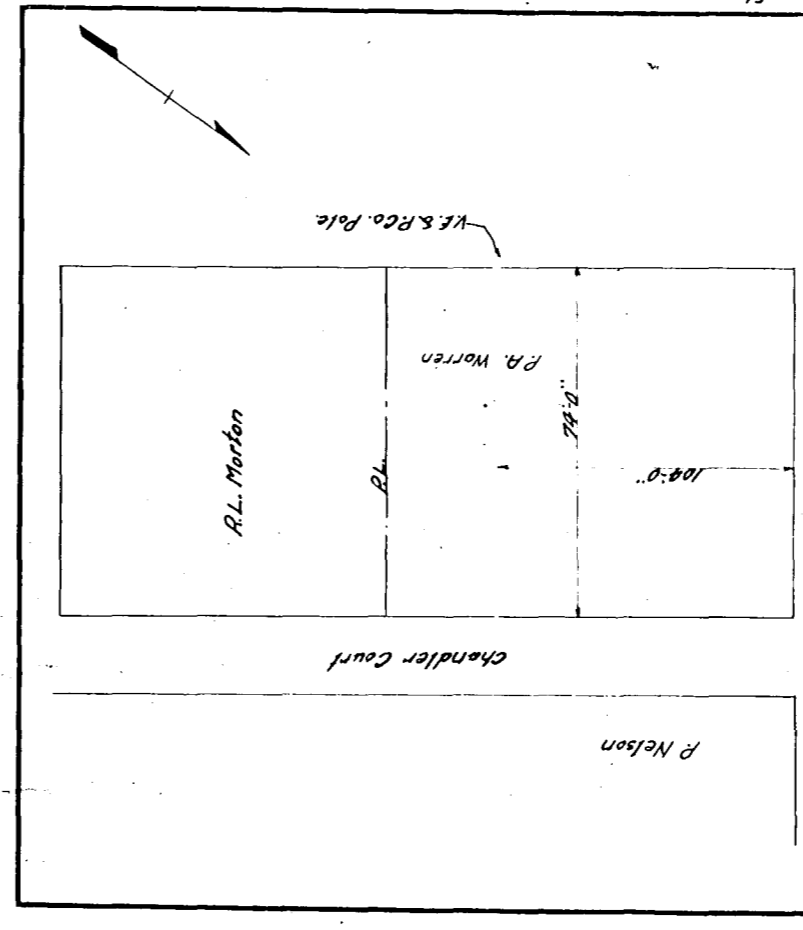


VIRGINIA ELECTRIC & POWER CO.
DISTRIBUTION ENGINEERING DEPT.
PROPOSED LIGHT AND POWER LINE ON PROPERTY OF GEORGE ROLLO
CHECKED *M. P. Noble*
Scale 1"=60' Wb9 2/1928-2



VIRGINIA ELECTRIC & POWER CO.
PLAY TO ACCOMPANY RIGHT-OF-WAY AGREEMENT
STATE *P.A. Warren*
CITY *City of Williamsburg Va*
SCALE *None* DATE *3/15/28*
DRAWN BY *Wb9 0-1928-12*